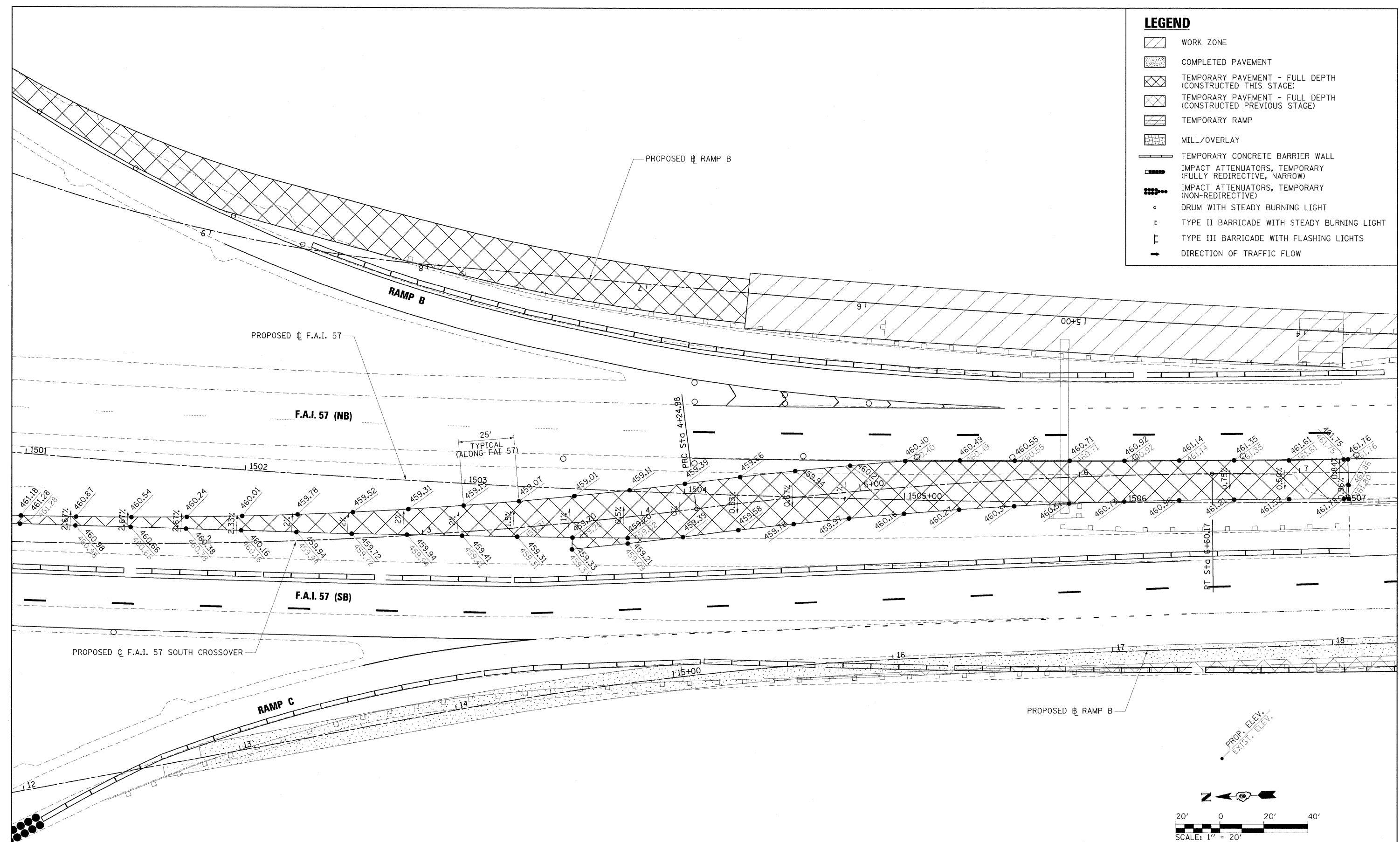
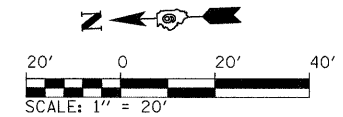


LEGEND	
	WORK ZONE
	COMPLETED PAVEMENT
	TEMPORARY PAVEMENT - FULL DEPTH (CONSTRUCTED THIS STAGE)
	TEMPORARY PAVEMENT - FULL DEPTH (CONSTRUCTED PREVIOUS STAGE)
	TEMPORARY RAMP
	MILL/OVERLAY
	TEMPORARY CONCRETE BARRIER WALL
	IMPACT ATTENUATORS, TEMPORARY (FULLY REDIRECTIVE, NARROW)
	IMPACT ATTENUATORS, TEMPORARY (NON-REDIRECTIVE)
	DRUM WITH STEADY BURNING LIGHT
	TYPE II BARRICADE WITH STEADY BURNING LIGHT
	TYPE III BARRICADE WITH FLASHING LIGHTS
	DIRECTION OF TRAFFIC FLOW



NOTE: CONTRACTOR TO VERIFY EXISTING EDGE OF PAVEMENT ELEVATIONS TO DETERMINE IF FIELD ADJUSTMENTS ARE REQUIRED PRIOR TO CONSTRUCTING CROSSOVER.



FILE NAME = ...\\D978182-sh-t-stagingPreB-157\XOVER2.DET	USER NAME = Brad Downen	DESIGNED - JWH	REVISD -	STATE OF ILLINOIS DEPARTMENT OF TRANSPORTATION	MAINTENANCE OF TRAFFIC PLAN - F.A.I. 57 PRE-STAGE B - SOUTH MEDIAN CROSSOVER DETAIL			F.A. RTE.	SECTION	COUNTY	TOTAL SHEETS	SHEET NO.	
	PLOT SCALE = 20,000' / IN.	DRAWN -	REVISD -		SCALE: 1" = 20'	SHEET NO.	OF	SHEETS	STA. 1801+00	TO STA. 1807+00	WILLIAMSON	968	170
	PLOT DATE = 10/12/2011	CHECKED -	REVISD -								* F.A.I. 57 AND F.A.P. 331	CONTRACT NO. 78182	
		DATE - 10/07/11	REVISD -								ILLINOIS FED. AID PROJECT		