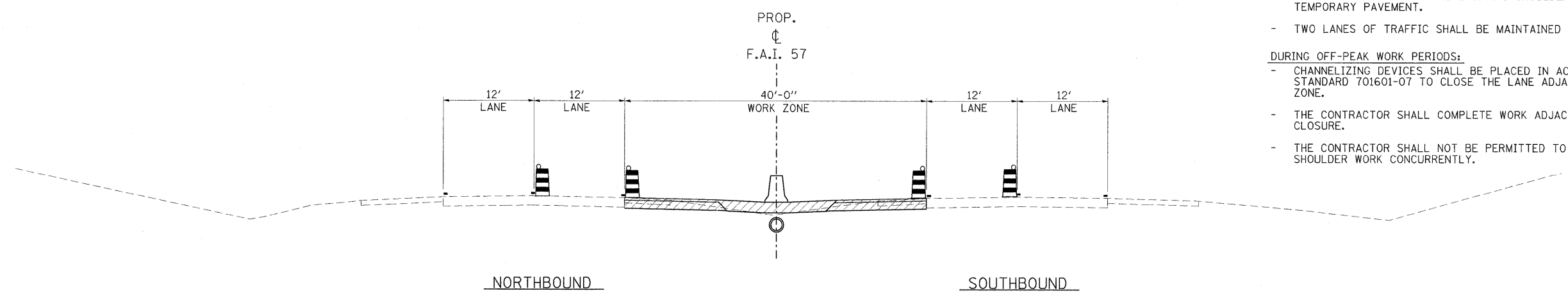


F.A.I. 57 - STAGE 1 TYPICAL #5
 STA. 1508+90.00 TO STA. 1511+08.87

- NOTES:**
- THE CONTRACTOR SHALL ADHERE TO DROP-OFF PROTECTION REQUIREMENTS SHOWN ON SHEET 136 AT ALL TIMES.
 - ** SEE SHEET 3 FOR TEMPORARY PAVEMENT HOT-MIX ASPHALT MIXTURE REQUIREMENTS.
- DURING PEAK PERIODS:**
- CHANNELIZING DEVICES SHALL BE PLACED OUTSIDE OF THE EXISTING EDGE OF PAVEMENT ON THE EXISTING SHOULDER OR ON COMPLETED TEMPORARY PAVEMENT.
 - TWO LANES OF TRAFFIC SHALL BE MAINTAINED IN EACH DIRECTION.
- DURING OFF-PEAK WORK PERIODS:**
- CHANNELIZING DEVICES SHALL BE PLACED IN ACCORDANCE WITH IDOT STANDARD 701601-07 TO CLOSE THE LANE ADJACENT TO THE WORK ZONE.
 - THE CONTRACTOR SHALL COMPLETE WORK ADJACENT TO THE LANE CLOSURE.
 - THE CONTRACTOR SHALL NOT BE PERMITTED TO PERFORM MEDIAN AND SHOULDER WORK CONCURRENTLY.



F.A.I. 57 - STAGE 1 TYPICAL #6
 STA. 1542+30.00 TO STA. 1572+91.61 BK
 STATION EQUATION
 STA. 0+00.00 AH TO STA. 1+00.79

LEGEND

	TEMPORARY BARRIER WALL		DRUM WITH STEADY BURNING LIGHT
	DIRECTION OF TRAFFIC		TYPE II BARRICADE WITH STEADY BURNING LIGHT
	WORK ZONE		VERTICAL PANEL, POST MOUNTED
	TEMPORARY PAVEMENT (CONSTRUCTED IN THIS STAGE)		

FILE NAME = ...\\0978182-sht-staging1-157-tyr003.dgn	USER NAME = Brad Downen	DESIGNED - RMM/EMM	REVISED -	STATE OF ILLINOIS DEPARTMENT OF TRANSPORTATION	MAINTENANCE OF TRAFFIC TYPICAL SECTIONS - F.A.I. 57 STAGE 1			F.A. RTE.	SECTION	COUNTY	TOTAL SHEETS	SHEET NO.		
		DRAWN - RJE	REVISED -		SCALE: NONE	SHEET NO.	OF	SHEETS	STA.	TO STA.	* (X1-6-2)HBK-2, HB-1,2; (X-1)R-1	WILLIAMSON	968	193
		CHECKED - BJD	REVISED -								* F.A.I. 57 AND F.A.P. 331	CONTRACT NO. 78182		
		DATE - 10/07/11	REVISED -								ILLINOIS FED. AID PROJECT			