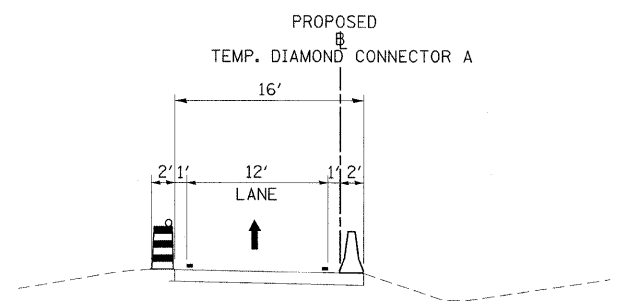
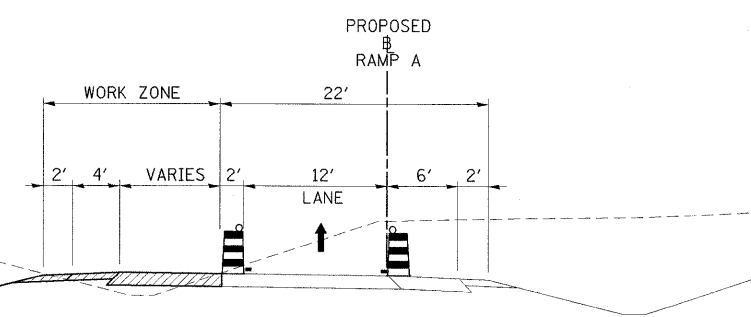


LEGEND

	WORK ZONE		TEMPORARY CONCRETE BARRIER WALL
	COMPLETED PAVEMENT		IMPACT ATTENUATORS, TEMPORARY (FULLY REDIRECTIVE, NARROW)
	TEMPORARY PAVEMENT - FULL DEPTH (CONSTRUCTED THIS STAGE)		IMPACT ATTENUATORS, TEMPORARY (NON-REDIRECTIVE)
	TEMPORARY PAVEMENT - FULL DEPTH (CONSTRUCTED PREVIOUS STAGE)		DRUM WITH STEADY BURNING LIGHT
	TEMPORARY RAMP		TYPE II BARRICADE WITH STEADY BURNING LIGHT
	MILL/OVERLAY		TYPE III BARRICADE WITH FLASHING LIGHTS
			DIRECTION OF TRAFFIC FLOW



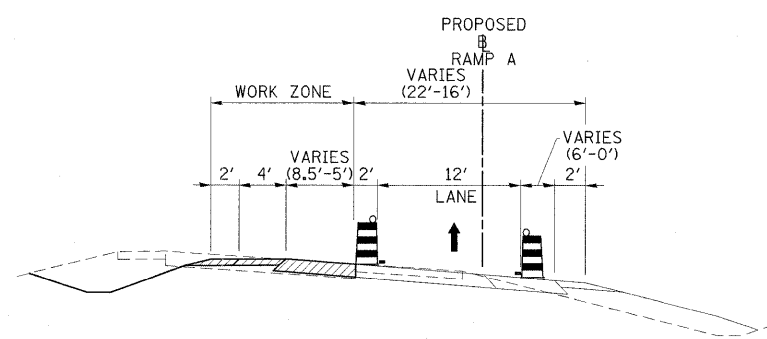
RAMP A - STAGE 1 TYPICAL #1
 TEMP. DIAMOND CONNECTOR A: STA. 15+00.00 TO STA. 18+57.00



RAMP A - STAGE 1 TYPICAL #2
 RAMP A: STA. 18+57.00 TO STA. 23+49.45

LEGEND

	TEMPORARY BARRIER WALL		DRUM WITH STEADY BURNING LIGHT
	DIRECTION OF TRAFFIC		TYPE II BARRICADE WITH STEADY BURNING LIGHT
	WORK ZONE		VERTICAL PANEL, POST MOUNTED
	TEMPORARY PAVEMENT (CONSTRUCTED IN THIS STAGE)		



RAMP A - STAGE 1 TYPICAL #3
 RAMP A: STA. 23+49.45 TO STA. 28+00.00

FILE NAME = ...D978182-sht-staging1-RAMPA.PNF.dgn	USER NAME = Brad Downen	DESIGNED - JMS	REVISED -	STATE OF ILLINOIS DEPARTMENT OF TRANSPORTATION	MAINTENANCE OF TRAFFIC PLAN & TYPICAL SECTIONS - RAMP A STAGE 1	F.A. RTE.	SECTION	COUNTY	TOTAL SHEETS	SHEET NO.
PLOT SCALE = 50.0000' / IN.	DRAWN - JMS/MJW	REVISED -	• (X1-6-2)HBK-2, HB-1,2; (IX-1R-1			WILLIAMSON	968	204		
PLOT DATE = 10/12/2011	CHECKED - BJD	REVISED -	• F.A.I. 57 AND F.A.P. 331			CONTRACT NO. 78182				
	DATE - 10/07/11	REVISED -				ILLINOIS FED. AID PROJECT				
SCALE:		SHEET NO. OF SHEETS		STA. TO STA.						