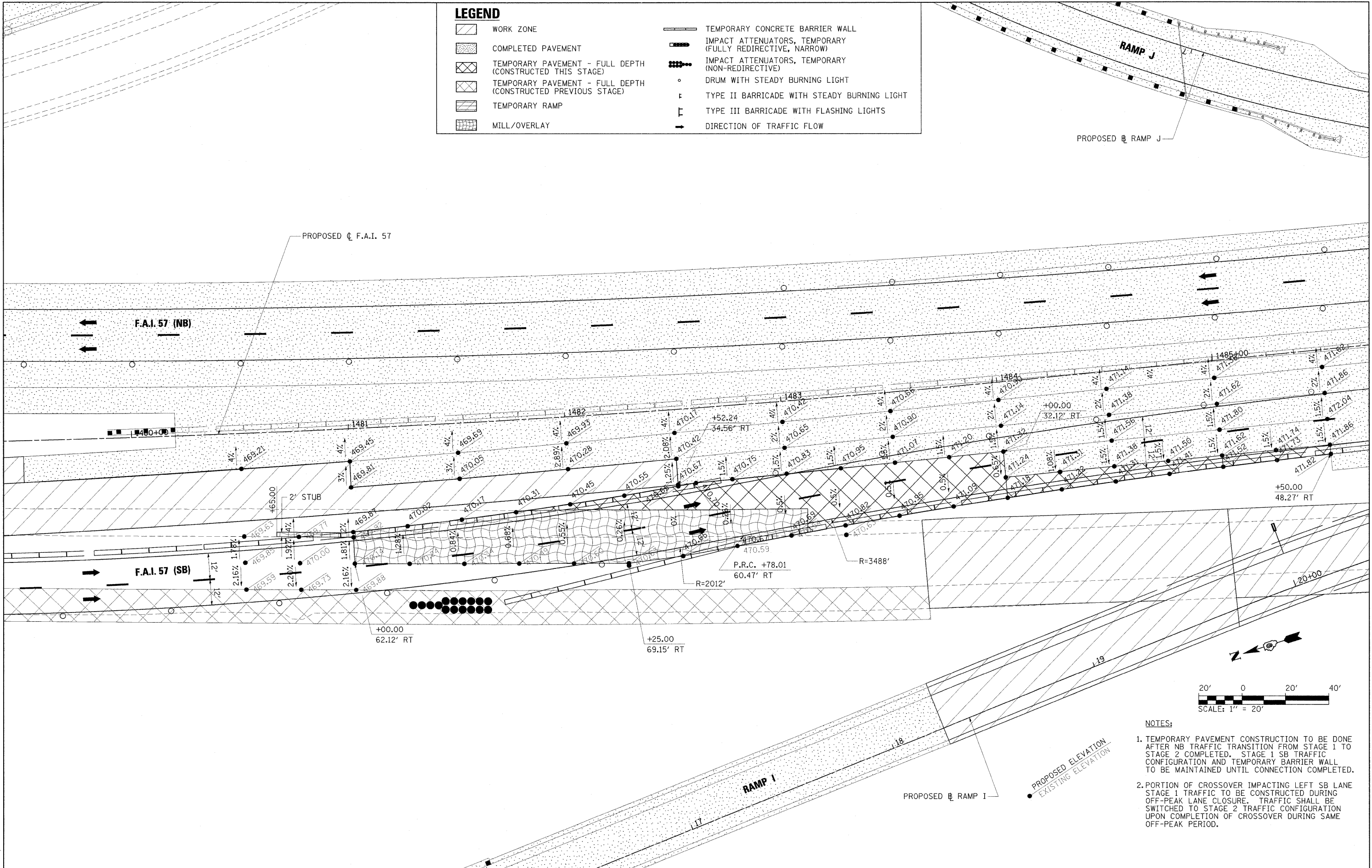


**LEGEND**

	WORK ZONE		TEMPORARY CONCRETE BARRIER WALL
	COMPLETED PAVEMENT		IMPACT ATTENUATORS, TEMPORARY (FULLY REDIRECTIVE, NARROW)
	TEMPORARY PAVEMENT - FULL DEPTH (CONSTRUCTED THIS STAGE)		IMPACT ATTENUATORS, TEMPORARY (NON-REDIRECTIVE)
	TEMPORARY PAVEMENT - FULL DEPTH (CONSTRUCTED PREVIOUS STAGE)		DRUM WITH STEADY BURNING LIGHT
	TEMPORARY RAMP		TYPE II BARRICADE WITH STEADY BURNING LIGHT
	MILL/OVERLAY		TYPE III BARRICADE WITH FLASHING LIGHTS
			DIRECTION OF TRAFFIC FLOW



- NOTES:**
1. TEMPORARY PAVEMENT CONSTRUCTION TO BE DONE AFTER NB TRAFFIC TRANSITION FROM STAGE 1 TO STAGE 2 COMPLETED. STAGE 1 SB TRAFFIC CONFIGURATION AND TEMPORARY BARRIER WALL TO BE MAINTAINED UNTIL CONNECTION COMPLETED.
  2. PORTION OF CROSSOVER IMPACTING LEFT SB LANE STAGE 1 TRAFFIC TO BE CONSTRUCTED DURING OFF-PEAK LANE CLOSURE. TRAFFIC SHALL BE SWITCHED TO STAGE 2 TRAFFIC CONFIGURATION UPON COMPLETION OF CROSSOVER DURING SAME OFF-PEAK PERIOD.

FILE NAME =	USER NAME = Brad Downen	DESIGNED - JWH	REVISED -	<b>STATE OF ILLINOIS DEPARTMENT OF TRANSPORTATION</b>	<b>MAINTENANCE OF TRAFFIC PLAN - F.A.I. 57 STAGE 2 - NORTH CROSSOVER DETAIL</b>			F.A. RTE.	SECTION	COUNTY	TOTAL SHEETS	SHEET NO.	
...\\D978182-sht-staging2-157XOVER1_DET.dgn		DRAWN - TAP	REVISED -		SCALE: 1" = 20'	SHEET NO.	OF	SHEETS	STA. 1805+00	TO STA. 1810+50	WILLIAMSON	968	241
		CHECKED - BJD	REVISED -								CONTRACT NO. 78182		
		DATE - 10/07/11	REVISED -								ILLINOIS FED. AID PROJECT		