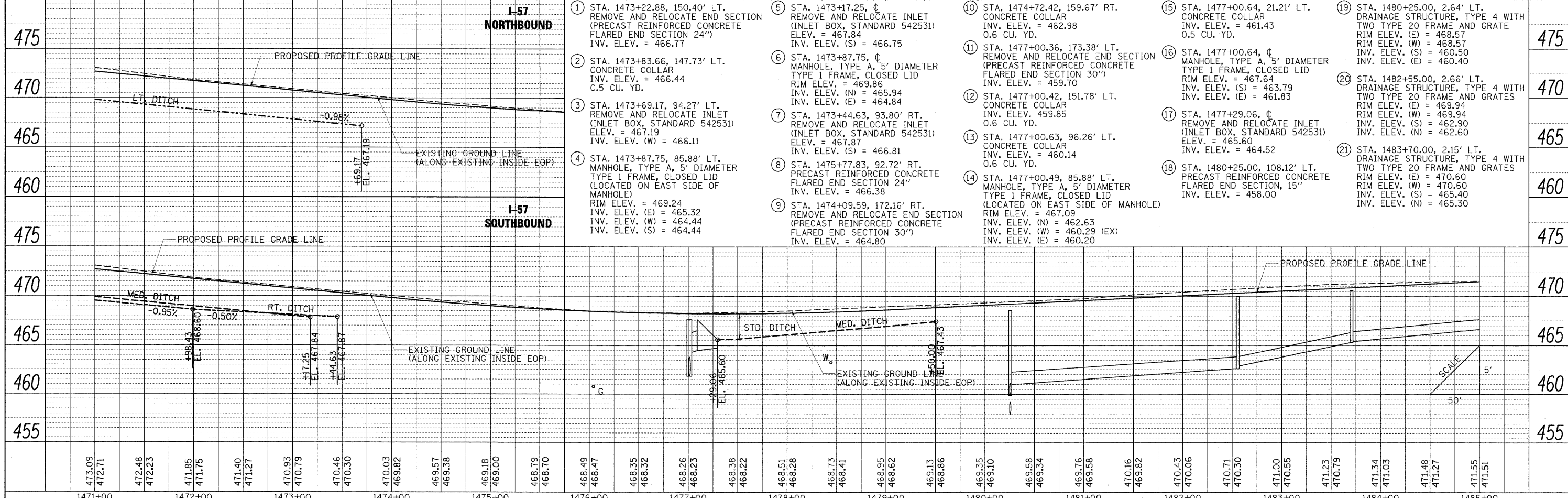
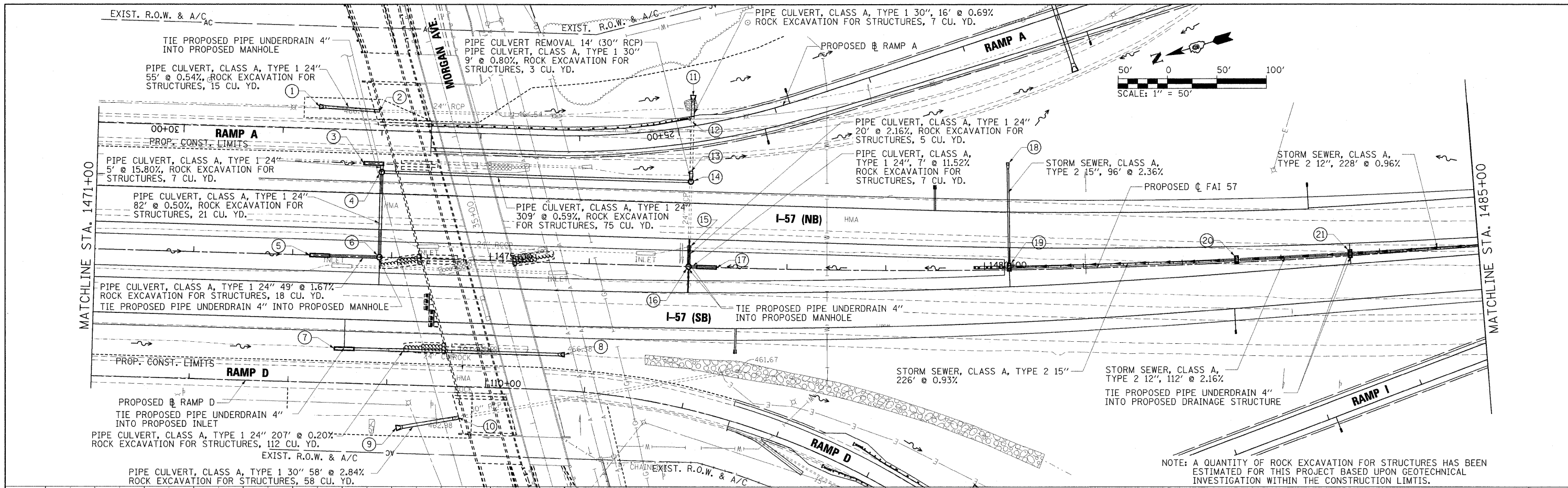


PLAN	REVISIONS	DATE
NO.	BY	
NO.	BY	
NO.	BY	
NO.	BY	
NO.	BY	
NO.	BY	
NO.	BY	
NO.	BY	
NO.	BY	
NO.	BY	

PROFILE	REVISIONS	DATE
NO.	BY	
NO.	BY	
NO.	BY	
NO.	BY	
NO.	BY	
NO.	BY	
NO.	BY	
NO.	BY	
NO.	BY	
NO.	BY	



- | | | | | | | | | | |
|---|--|---|---|----|---|----|--|----|---|
| 1 | STA. 1473+22.88, 150.40' LT. REMOVE AND RELOCATE END SECTION (PRECAST REINFORCED CONCRETE FLARED END SECTION 24") INV. ELEV. = 466.77 | 5 | STA. 1473+17.25, 0' REMOVE AND RELOCATE INLET (INLET BOX, STANDARD 542531) ELEV. = 467.84 INV. ELEV. (S) = 466.75 | 10 | STA. 1474+72.42, 159.67' RT. CONCRETE COLLAR INV. ELEV. = 462.98 0.6 CU. YD. | 15 | STA. 1477+00.64, 21.21' LT. CONCRETE COLLAR INV. ELEV. = 461.43 0.5 CU. YD. | 20 | STA. 1482+55.00, 2.66' LT. DRAINAGE STRUCTURE, TYPE 4 WITH TWO TYPE 20 FRAME AND GRATES RIM ELEV. (E) = 468.57 RIM ELEV. (W) = 468.57 INV. ELEV. (S) = 460.50 INV. ELEV. (E) = 460.40 |
| 2 | STA. 1473+83.66, 147.73' LT. CONCRETE COLLAR INV. ELEV. = 466.44 0.5 CU. YD. | 6 | STA. 1473+87.75, 0' MANHOLE, TYPE A, 5' DIAMETER TYPE 1 FRAME, CLOSED LID RIM ELEV. = 469.86 INV. ELEV. (N) = 465.94 INV. ELEV. (E) = 464.84 | 11 | STA. 1477+00.36, 173.38' LT. REMOVE AND RELOCATE END SECTION (PRECAST REINFORCED CONCRETE FLARED END SECTION 30") INV. ELEV. = 459.70 | 16 | STA. 1477+00.64, 0' MANHOLE, TYPE A, 5' DIAMETER TYPE 1 FRAME, CLOSED LID RIM ELEV. = 467.64 INV. ELEV. (S) = 463.79 INV. ELEV. (E) = 461.83 | 21 | STA. 1483+70.00, 2.15' LT. DRAINAGE STRUCTURE, TYPE 4 WITH TWO TYPE 20 FRAME AND GRATES RIM ELEV. (E) = 470.60 RIM ELEV. (W) = 470.60 INV. ELEV. (S) = 465.40 INV. ELEV. (N) = 465.30 |
| 3 | STA. 1473+69.17, 94.27' LT. REMOVE AND RELOCATE INLET (INLET BOX, STANDARD 542531) ELEV. = 467.19 INV. ELEV. (W) = 466.11 | 7 | STA. 1473+44.63, 93.80' RT. REMOVE AND RELOCATE INLET (INLET BOX, STANDARD 542531) ELEV. = 467.87 INV. ELEV. (S) = 466.81 | 12 | STA. 1477+00.42, 151.78' LT. CONCRETE COLLAR INV. ELEV. = 459.85 0.6 CU. YD. | 17 | STA. 1477+29.06, 0' REMOVE AND RELOCATE INLET (INLET BOX, STANDARD 542531) ELEV. = 465.60 INV. ELEV. = 464.52 | | |
| 4 | STA. 1473+87.75, 85.88' LT. MANHOLE, TYPE A, 5' DIAMETER TYPE 1 FRAME, CLOSED LID (LOCATED ON EAST SIDE OF MANHOLE) RIM ELEV. = 469.24 INV. ELEV. (E) = 465.32 INV. ELEV. (W) = 464.44 INV. ELEV. (S) = 464.44 | 8 | STA. 1475+77.83, 92.72' RT. PRECAST REINFORCED CONCRETE FLARED END SECTION 24" INV. ELEV. = 466.38 | 13 | STA. 1477+00.63, 96.26' LT. CONCRETE COLLAR INV. ELEV. = 460.14 0.6 CU. YD. | 18 | STA. 1480+25.00, 108.12' LT. PRECAST REINFORCED CONCRETE FLARED END SECTION, 15" INV. ELEV. = 458.00 | | |
| | | 9 | STA. 1474+09.59, 172.16' RT. REMOVE AND RELOCATE END SECTION (PRECAST REINFORCED CONCRETE FLARED END SECTION 30") RIM ELEV. = 467.09 INV. ELEV. (N) = 462.63 INV. ELEV. (W) = 460.29 (EX) INV. ELEV. (E) = 460.20 | 14 | STA. 1477+00.49, 85.88' LT. MANHOLE, TYPE A, 5' DIAMETER TYPE 1 FRAME, CLOSED LID (LOCATED ON EAST SIDE OF MANHOLE) RIM ELEV. = 467.09 INV. ELEV. (N) = 462.63 INV. ELEV. (W) = 460.29 (EX) INV. ELEV. (E) = 460.20 | | | | |