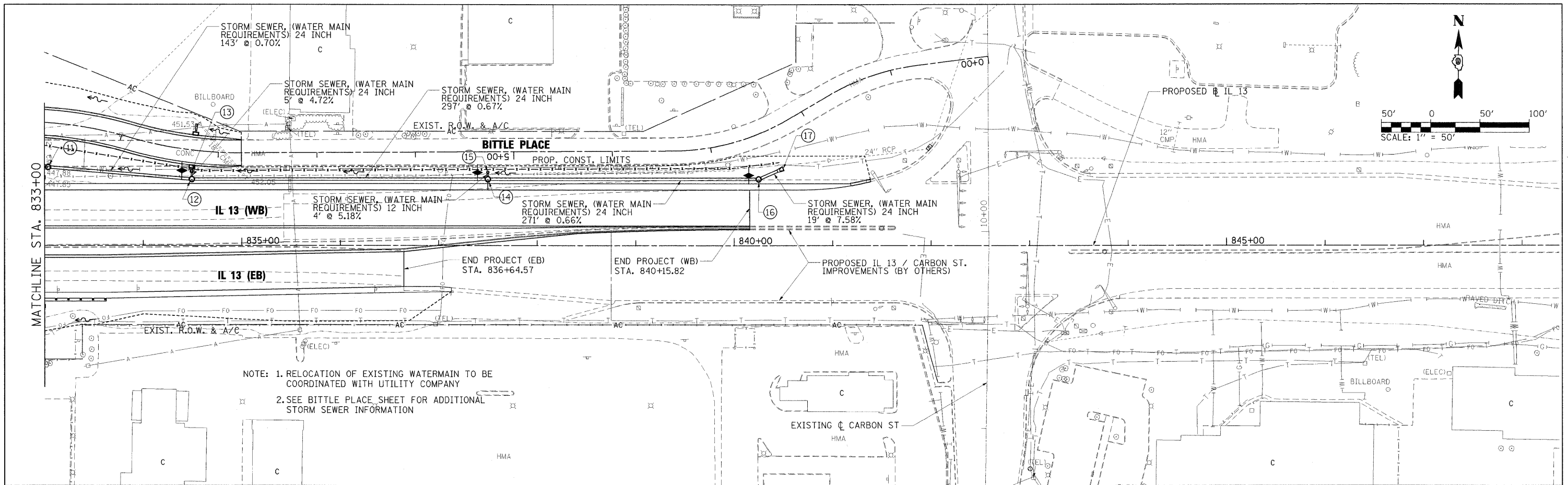
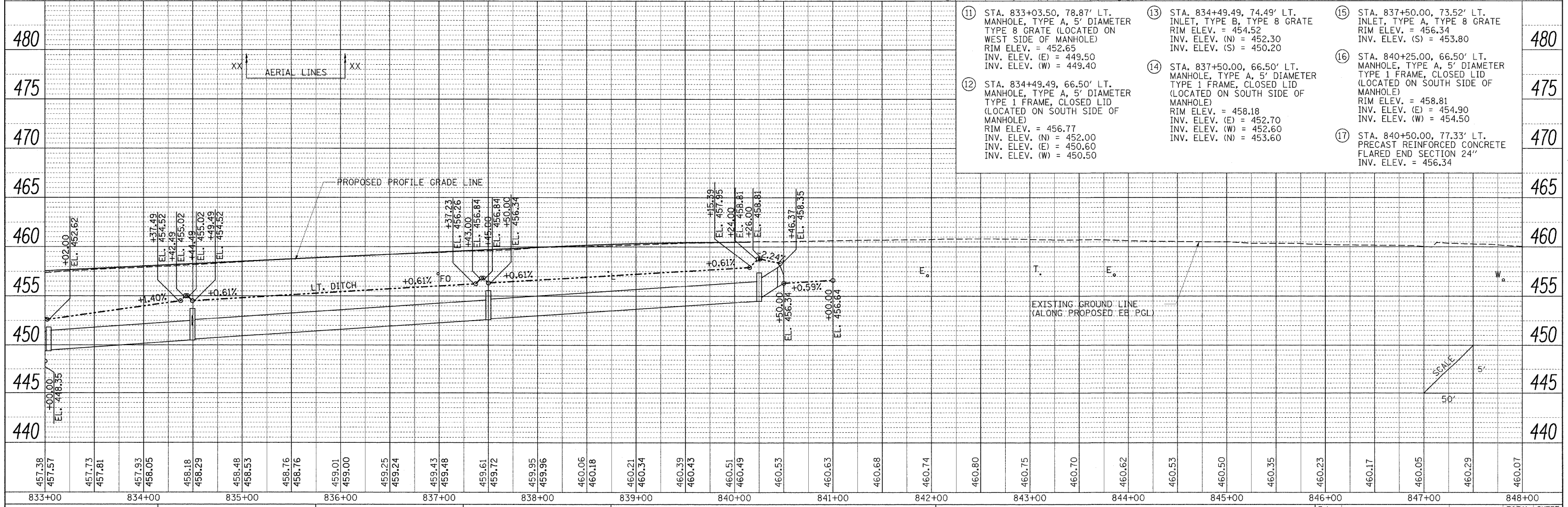


BY: DATE: SURVEYED: ALIGNMENT CHECKED: NOTE BOOK NO. / RT. OF WAY CHECKED: PAID FILE NAME: NO.

BY: DATE: PROFILE SURVEYED: GRADES CHECKED: NOTE BOOK NO. / STRUCTURE NOTATIONS CHFD: NO.



NOTE: 1. RELOCATION OF EXISTING WATERMAIN TO BE COORDINATED WITH UTILITY COMPANY
2. SEE BITTLE PLACE SHEET FOR ADDITIONAL STORM SEWER INFORMATION



- 11 STA. 833+03.50, 78.87' LT. MANHOLE, TYPE A, 5' DIAMETER TYPE 8 GRATE (LOCATED ON WEST SIDE OF MANHOLE) RIM ELEV. = 452.65 INV. ELEV. (E) = 449.50 INV. ELEV. (W) = 449.40
- 12 STA. 834+49.49, 66.50' LT. MANHOLE, TYPE A, 5' DIAMETER TYPE 1 FRAME, CLOSED LID (LOCATED ON SOUTH SIDE OF MANHOLE) RIM ELEV. = 456.77 INV. ELEV. (N) = 452.00 INV. ELEV. (E) = 450.60 INV. ELEV. (W) = 450.50
- 13 STA. 834+49.49, 74.49' LT. INLET, TYPE B, TYPE 8 GRATE RIM ELEV. = 454.52 INV. ELEV. (N) = 452.30 INV. ELEV. (S) = 450.20
- 14 STA. 837+50.00, 66.50' LT. MANHOLE, TYPE A, 5' DIAMETER TYPE 1 FRAME, CLOSED LID (LOCATED ON SOUTH SIDE OF MANHOLE) RIM ELEV. = 458.18 INV. ELEV. (E) = 452.70 INV. ELEV. (W) = 454.50
- 15 STA. 837+50.00, 73.52' LT. INLET, TYPE A, TYPE 8 GRATE RIM ELEV. = 456.34 INV. ELEV. (S) = 453.80
- 16 STA. 840+25.00, 66.50' LT. MANHOLE, TYPE A, 5' DIAMETER TYPE 1 FRAME, CLOSED LID (LOCATED ON SOUTH SIDE OF MANHOLE) RIM ELEV. = 458.81 INV. ELEV. (E) = 454.90 INV. ELEV. (W) = 454.50
- 17 STA. 840+50.00, 77.33' LT. PRECAST REINFORCED CONCRETE FLARED END SECTION 24" INV. ELEV. = 456.34