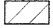
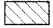




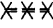

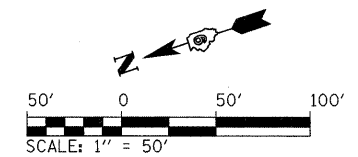


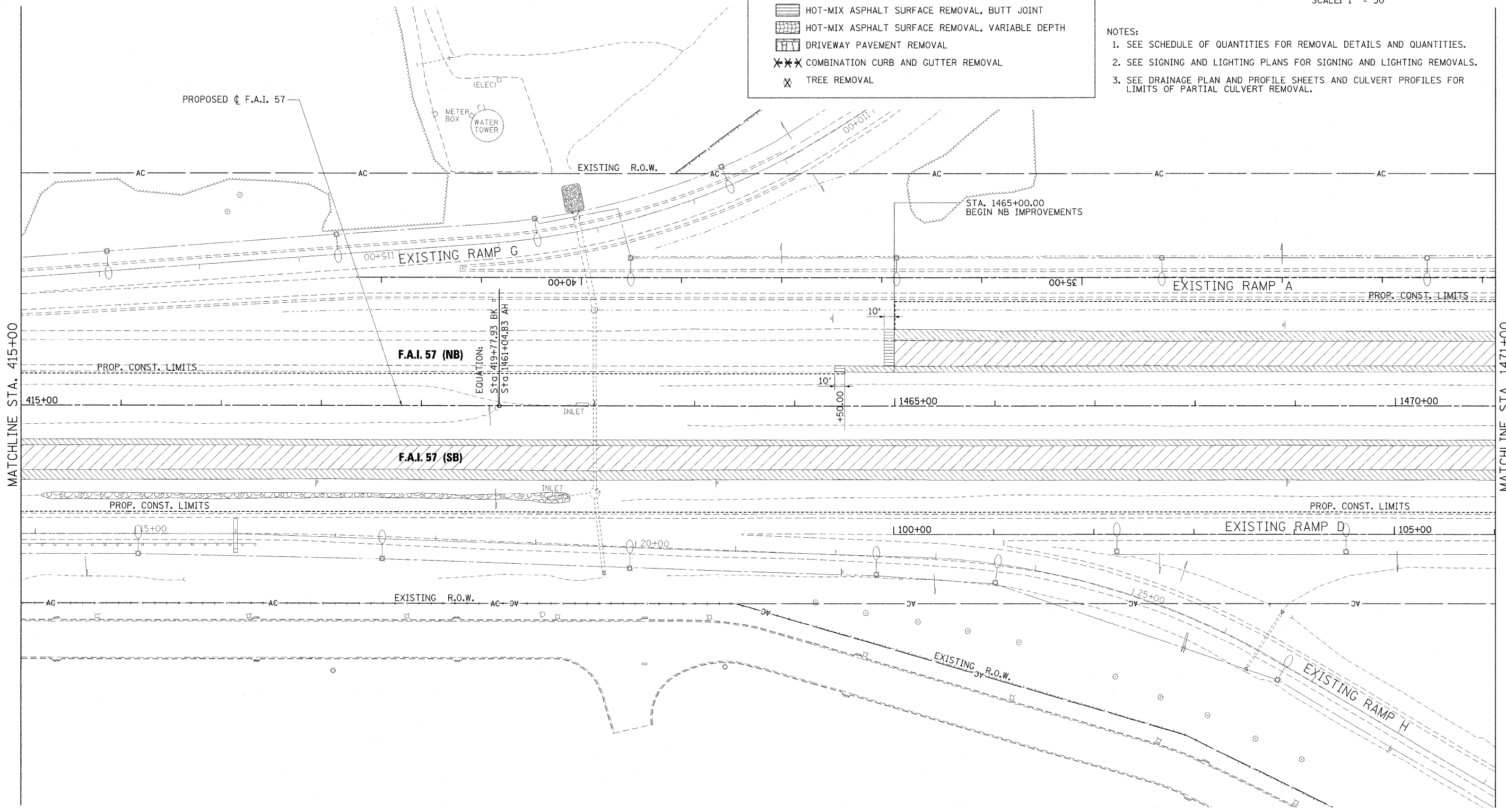
REMOVAL LEGEND

-  PAVEMENT REMOVAL
-  PAVED SHOULDER REMOVAL
-  MEDIAN REMOVAL
-  HOT-MIX ASPHALT SURFACE REMOVAL, BUTT JOINT
-  HOT-MIX ASPHALT SURFACE REMOVAL, VARIABLE DEPTH
-  DRIVEWAY PAVEMENT REMOVAL
-  COMBINATION CURB AND GUTTER REMOVAL
-  TREE REMOVAL



NOTES:

1. SEE SCHEDULE OF QUANTITIES FOR REMOVAL DETAILS AND QUANTITIES.
2. SEE SIGNING AND LIGHTING PLANS FOR SIGNING AND LIGHTING REMOVALS.
3. SEE DRAINAGE PLAN AND PROFILE SHEETS AND CULVERT PROFILES FOR LIMITS OF PARTIAL CULVERT REMOVAL.



FILE NAME = ...D978182-shr-rem-157.d03.dgn
 USER NAME = Rob Heady
 PLOT SCALE = 50,0000 "/>

DESIGNED - MKW
 DRAWN - MKW
 CHECKED - BJD
 DATE - 10/07/11

REVISED -
 REVISED -
 REVISED -
 REVISED -

**STATE OF ILLINOIS
 DEPARTMENT OF TRANSPORTATION**

**REMOVAL PLAN
 INTERSTATE 57**
 SCALE: 1" = 50' SHEET NO. OF SHEETS STA. 415+00 TO STA. 1471+00

F.A. RTE.	SECTION	COUNTY	TOTAL SHEETS	SHEET NO.
* 0X1-6-2HBK-2, HB-1,2; (IX-1)R-1		WILLIAMSON	968	340
* F.A.I. 57 AND F.A.P. 331				CONTRACT NO. 78182
ILLINOIS FED. AID PROJECT				