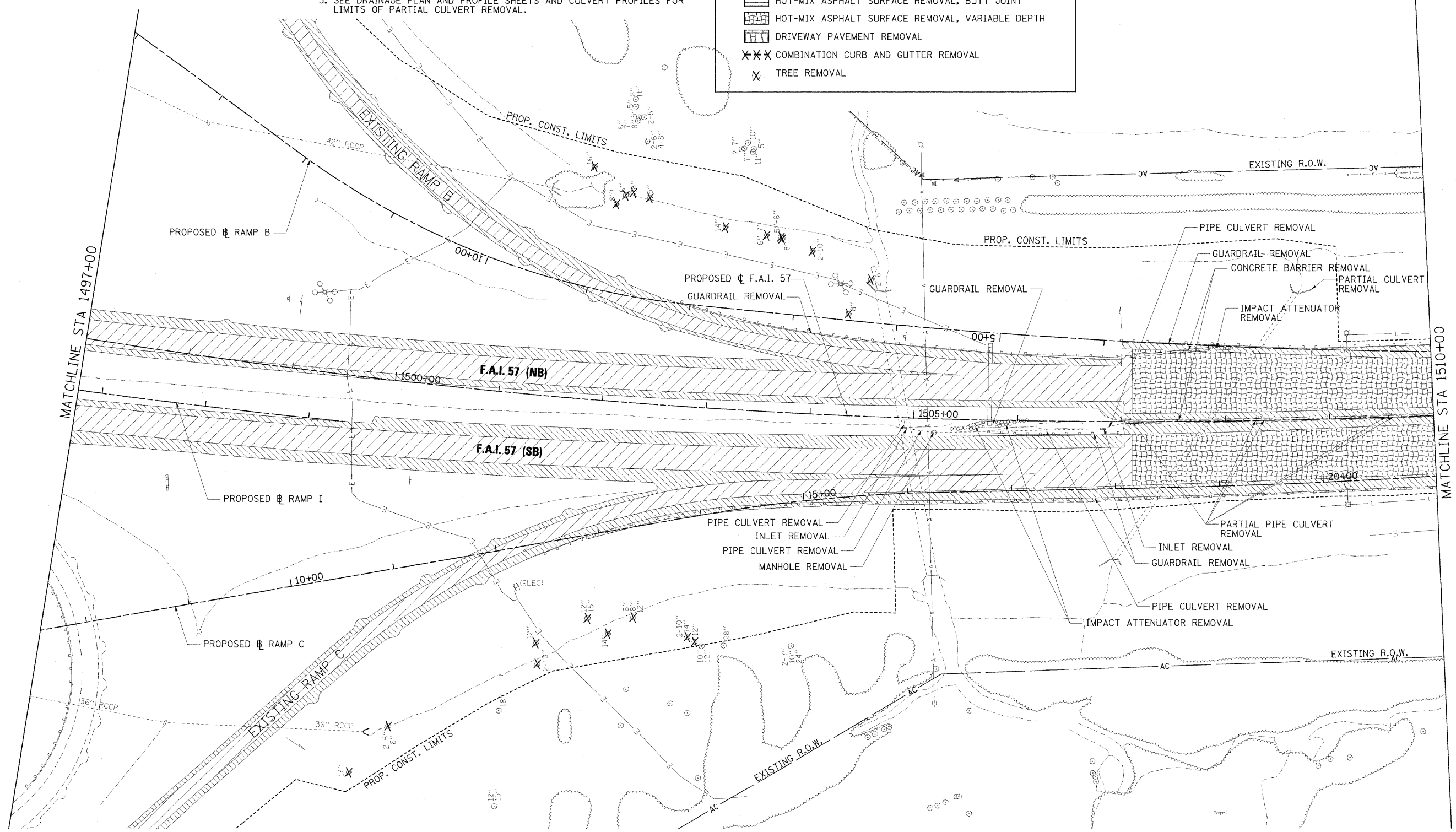
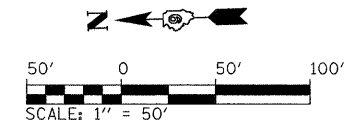


- NOTES:
1. SEE SCHEDULE OF QUANTITIES FOR REMOVAL DETAILS AND QUANTITIES.
 2. SEE SIGNING AND LIGHTING PLANS FOR SIGNING AND LIGHTING REMOVALS.
 3. SEE DRAINAGE PLAN AND PROFILE SHEETS AND CULVERT PROFILES FOR LIMITS OF PARTIAL CULVERT REMOVAL.

REMOVAL LEGEND

- PAVEMENT REMOVAL
- PAVED SHOULDER REMOVAL
- MEDIAN REMOVAL
- HOT-MIX ASPHALT SURFACE REMOVAL, BUTT JOINT
- HOT-MIX ASPHALT SURFACE REMOVAL, VARIABLE DEPTH
- DRIVEWAY PAVEMENT REMOVAL
- COMBINATION CURB AND GUTTER REMOVAL
- TREE REMOVAL



FILE NAME = ...\\D978182-sht-ram-157_006.dgn
 PLOT SCALE = 50.0000' / IN.
 PLOT DATE = 10/12/2011

USER NAME = Brad Downen
 DESIGNED - MKW
 DRAWN - MKW
 CHECKED - BJD
 DATE - 10/07/11

REVISED -
 REVISED -
 REVISED -
 REVISED -

**STATE OF ILLINOIS
 DEPARTMENT OF TRANSPORTATION**

**REMOVAL PLAN
 INTERSTATE 57**

SCALE: 1" = 50' SHEET NO. OF SHEETS STA. 1497+00 TO STA. 1510+00

F.A. RTE.	SECTION	COUNTY	TOTAL SHEETS	SHEET NO.
• (X1-6-2)HBK-2, HB-1,2; (X1-1R-1	WILLIAMSON	968	343	
• F.A.I. 57 AND F.A.P. 331	CONTRACT NO. 78182			
ILLINOIS FED. AID PROJECT				