
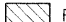






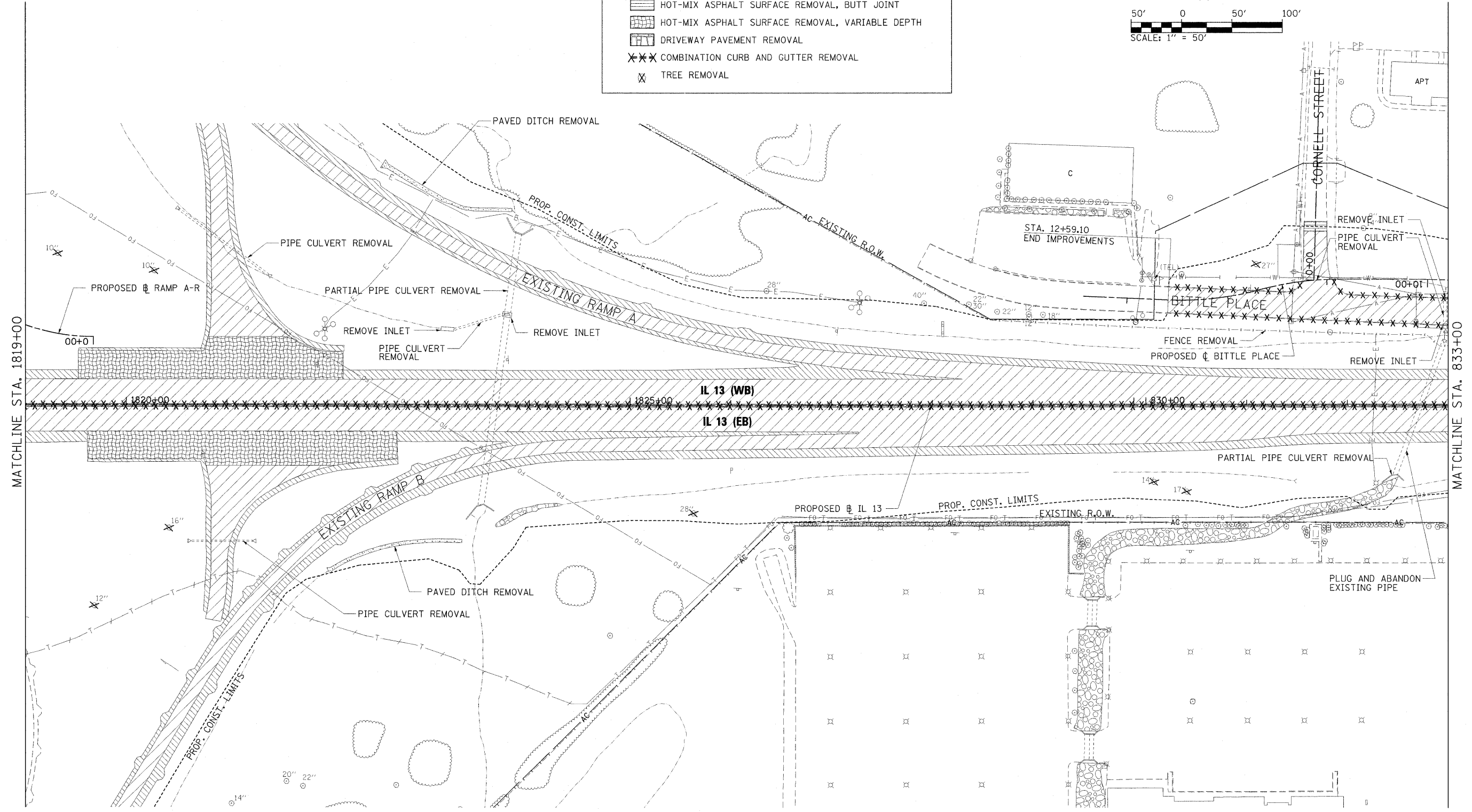
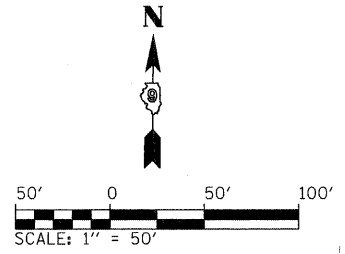


- NOTES:
1. SEE SCHEDULE OF QUANTITIES FOR REMOVAL DETAILS AND QUANTITIES.
  2. SEE SIGNING AND LIGHTING PLANS FOR SIGNING AND LIGHTING REMOVALS.
  3. SEE DRAINAGE PLAN AND PROFILE SHEETS AND CULVERT PROFILES FOR LIMITS OF PARTIAL CULVERT REMOVAL.

**REMOVAL LEGEND**

-  PAVEMENT REMOVAL
-  PAVED SHOULDER REMOVAL
-  MEDIAN REMOVAL
-  HOT-MIX ASPHALT SURFACE REMOVAL, BUTT JOINT
-  HOT-MIX ASPHALT SURFACE REMOVAL, VARIABLE DEPTH
-  DRIVEWAY PAVEMENT REMOVAL
-  COMBINATION CURB AND GUTTER REMOVAL
-  TREE REMOVAL



FILE NAME = ...D978182-sht-rem-IL13.014.dgn	USER NAME = Brad Downen	DESIGNED - MKW	REVISED -	<b>STATE OF ILLINOIS DEPARTMENT OF TRANSPORTATION</b>	<b>REMOVAL PLAN ILLINOIS ROUTE 13</b>	F.A. RTE.	SECTION	COUNTY	TOTAL SHEETS	SHEET NO.
	PLOT SCALE = 50.0000' / IN.	CHECKED - BJD	REVISED -			• (X1-6-2)HBK-2, HB-1,2; (X1-1R-1	WILLIAMSON	968	351	
	PLOT DATE = 10/12/2011	DATE - 10/07/11	REVISED -			• F.A.I. 57 AND F.A.P. 331	CONTRACT NO. 78182	ILLINOIS FED. AID PROJECT		
					SCALE: 1" = 50'	SHEET NO. OF SHEETS		STA. 1819+00 TO STA. 833+00		