

PROP. CURVE PRRMPA-1  
 PI STA. = 15+13.72  
 $\Delta = 64^\circ 04' 56''$  (LT)  
 $D = 13^\circ 15' 46''$   
 $R = 432.00'$   
 $T = 270.37'$   
 $L = 483.17'$   
 $E = 77.63'$   
 $e = 2.0\%$   
 T.R. = N/A  
 S.E. RUN = N/A  
 P.C. STA. = 12+43.35  
 P.T. STA. = 17+26.52

PROP. CURVE PRRMPAR-1  
 PI STA. = 1+80.75  
 $\Delta = 84^\circ 12' 42''$  (RT)  
 $D = 28^\circ 38' 52''$   
 $R = 200.00'$   
 $T = 180.75'$   
 $L = 293.95'$   
 $E = 69.58'$   
 $e = 2.0\%$   
 T.R. = N/A  
 S.E. RUN = N/A  
 P.C. STA. = 0+00.00  
 P.C.C. STA. = 2+93.95

PROP. CURVE PRRMPAR-2  
 PI STA. = 3+26.13  
 $\Delta = 35^\circ 40' 33''$  (RT)  
 $D = 57^\circ 17' 45''$   
 $R = 100.00'$   
 $T = 32.18'$   
 $L = 62.27'$   
 $E = 5.05'$   
 $e = 2.0\%$   
 T.R. = N/A  
 S.E. RUN = N/A  
 P.C.C. STA. = 2+93.95  
 P.T. STA. = 3+56.22

STA. 14+90.34 RAMP A =  
 STA. 3+56.22 RAMP A-R

PROP. CURVE PRRMPB-2  
 PI STA. = 18+96.29  
 $\Delta = 98^\circ 10' 19''$  (LT)  
 $D = 17^\circ 15' 28''$   
 $R = 332.00'$   
 $T = 383.08'$   
 $L = 568.86'$   
 $E = 174.93'$   
 $e = 2.0\%$   
 T.R. = 75' (2 LANES)  
 S.E. RUN = 75' (2 LANES)  
 P.C. STA. = 15+13.20  
 P.T. STA. = 20+82.06

PROP. CURVE PRRMPBR-1  
 PI STA. = 3+11.40  
 $\Delta = 90^\circ 00' 00''$  (RT)  
 $D = 28^\circ 38' 52''$   
 $R = 200.00'$   
 $T = 200.00'$   
 $L = 314.16'$   
 $E = 82.84'$   
 $e = 2.0\%$   
 T.R. = 55'  
 S.E. RUN = 55'  
 P.C. STA. = 1+11.40  
 P.T. STA. = 4+25.56

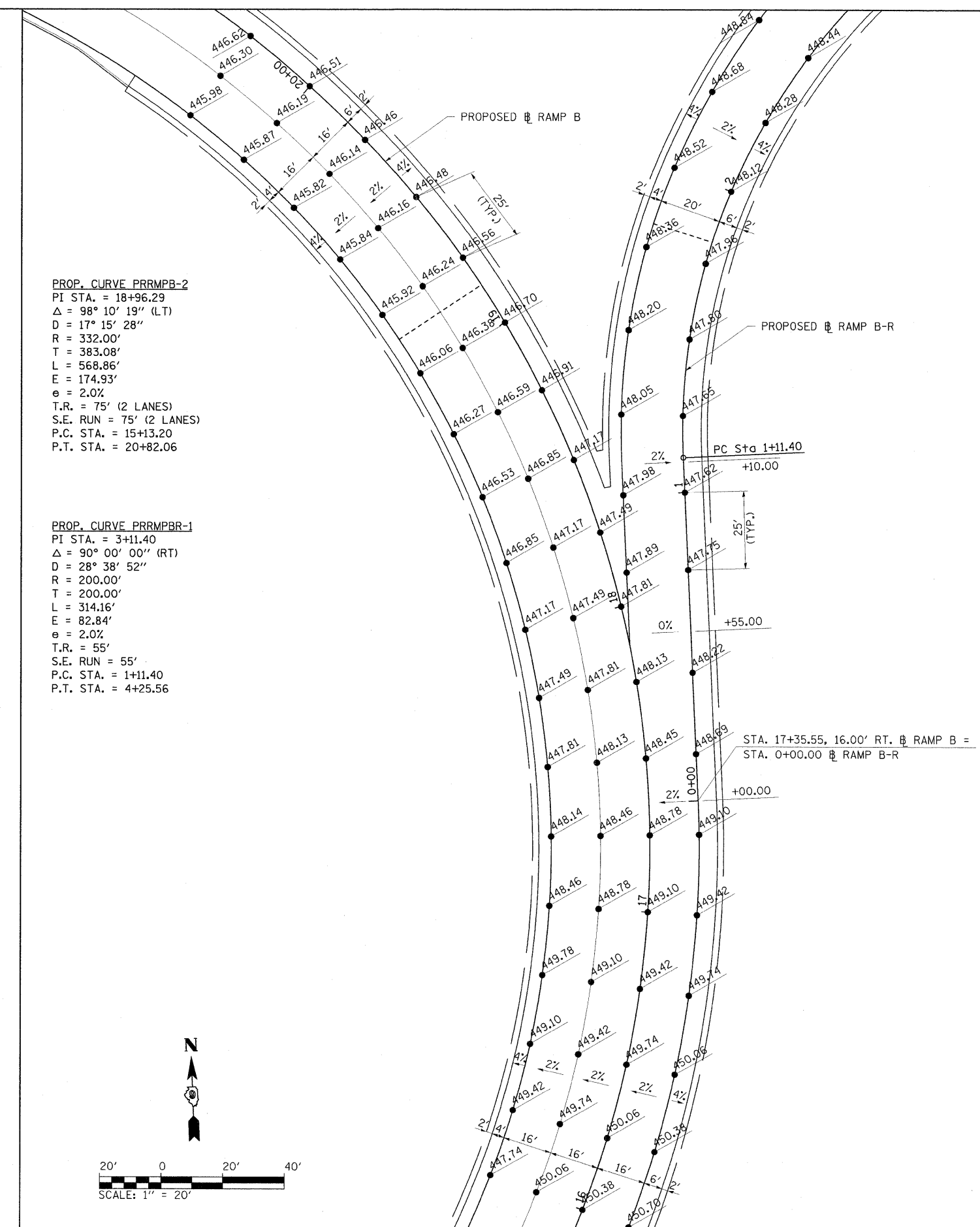
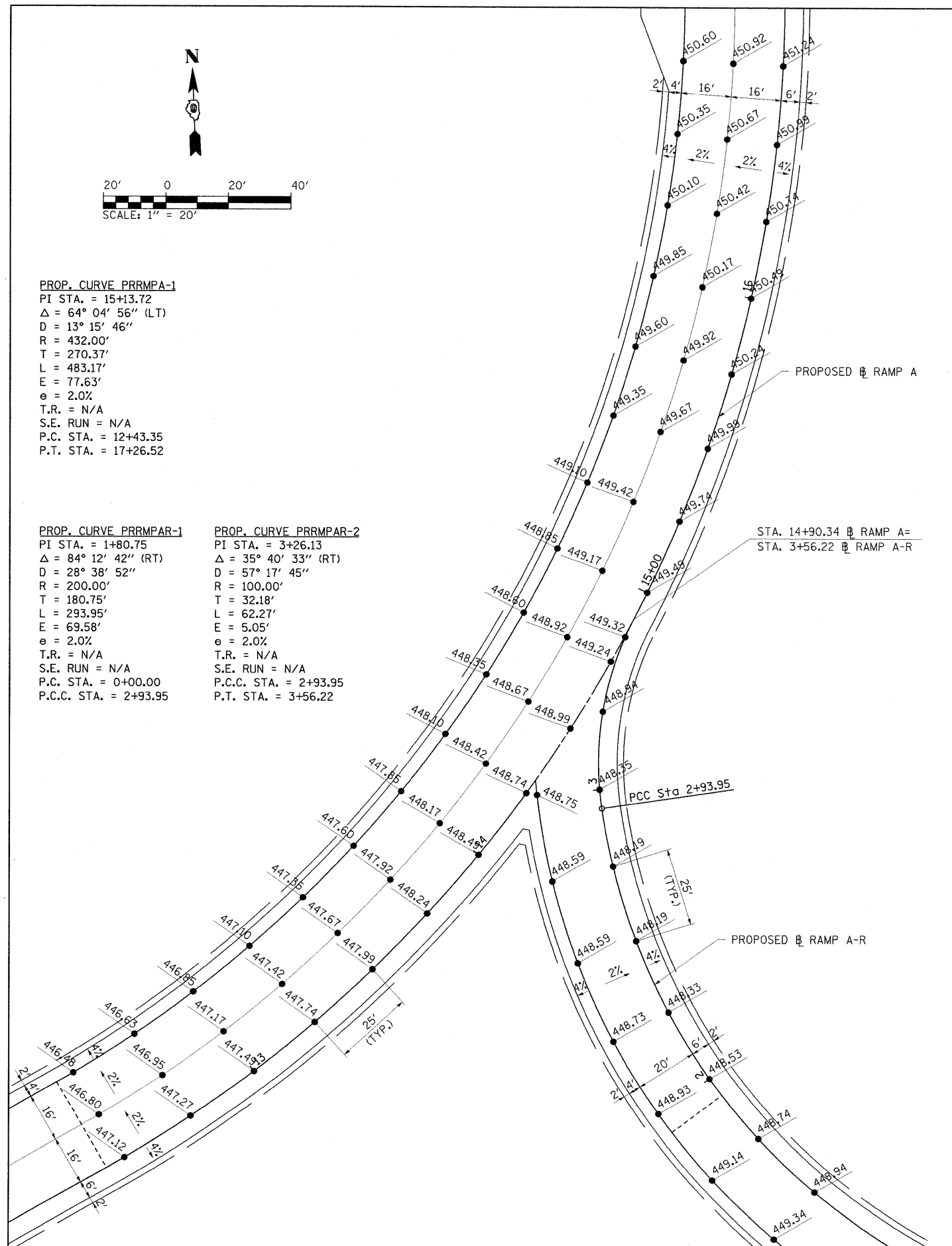
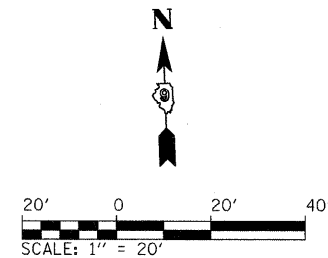
PC Sta 1+11.40

+10.00

0% +55.00

0% +00.00

STA. 17+35.55, 16.00' RT. RAMP B =  
 STA. 0+00.00 RAMP B-R



FILE NAME = ...D978182-sht-intersecRT A-B.dgn  
 USER NAME = Rob Heady  
 PLOT SCALE = 20.0000' / IN.  
 PLOT DATE = 10/7/2011

DESIGNED - JWH  
 DRAWN - JWH  
 CHECKED - BJD  
 DATE - 10/07/11

REVISED -  
 REVISED -  
 REVISED -  
 REVISED -

STATE OF ILLINOIS  
 DEPARTMENT OF TRANSPORTATION

INTERSECTION DETAIL  
 RAMP A-R AND RAMP B-R  
 SCALE: 1" = 20' SHEET NO. OF SHEETS STA. TO STA.

F.A. RTE.	SECTION	COUNTY	TOTAL SHEETS	SHEET NO.
• (X1-6-2)HBK-2, HB-1,2; (X-1)R-1		WILLIAMSON	968	375
• F.A.I. 57 AND F.A.P. 331		WILLIAMSON		CONTRACT NO. 78182
[ILLINOIS] FED. AID PROJECT				