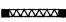
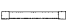

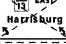
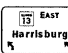

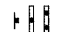
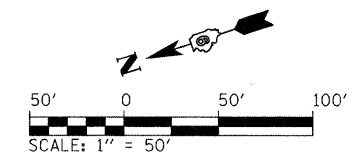


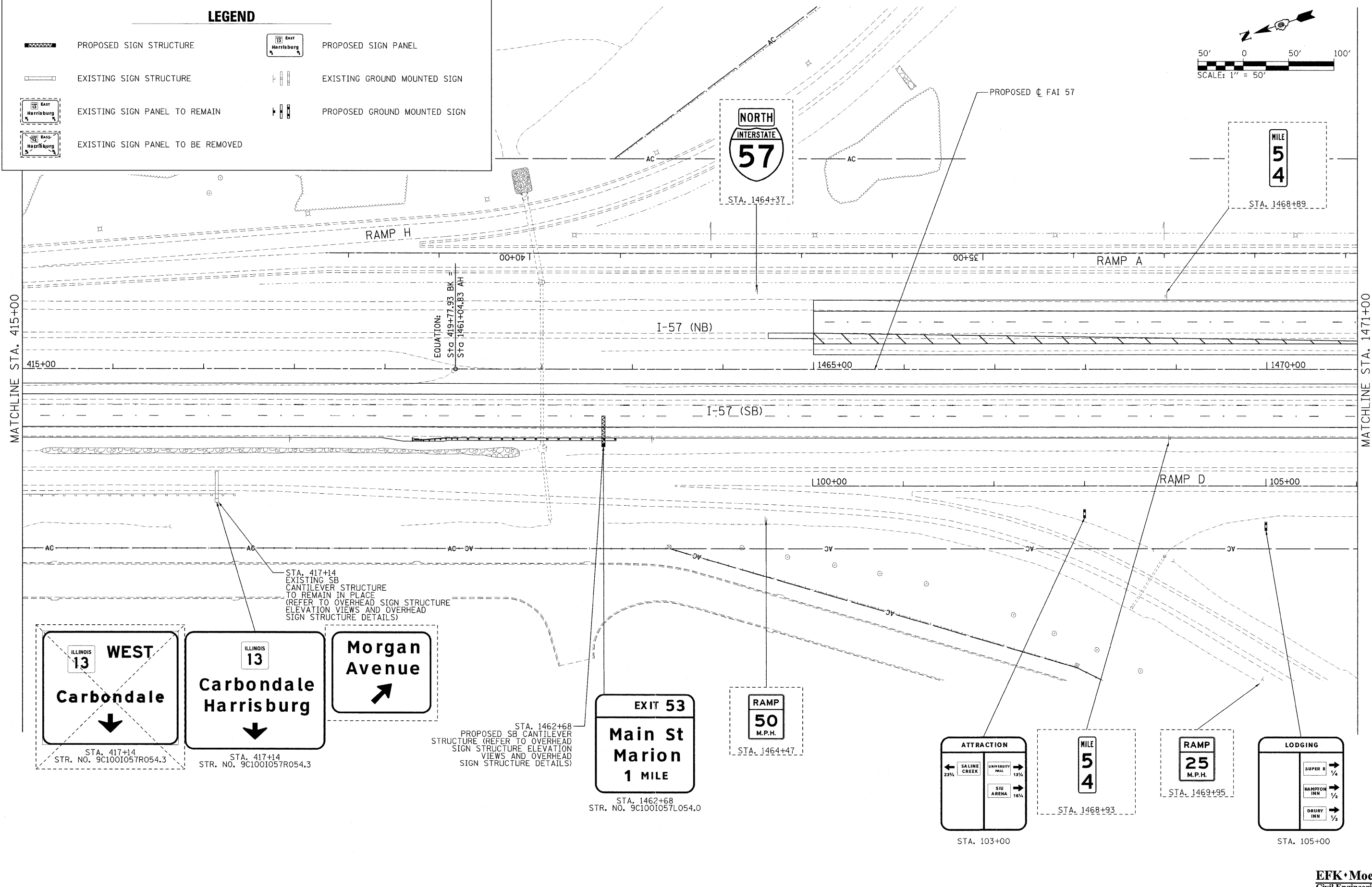
LEGEND

-  PROPOSED SIGN STRUCTURE
-  EXISTING SIGN STRUCTURE
-  EXISTING SIGN PANEL TO REMAIN
-  EXISTING SIGN PANEL TO BE REMOVED
-  PROPOSED SIGN PANEL
-  EXISTING GROUND MOUNTED SIGN
-  PROPOSED GROUND MOUNTED SIGN



MATCHLINE STA. 415+00

MATCHLINE STA. 1471+00



STA. 417+14
EXISTING SB
CANTILEVER STRUCTURE
TO REMAIN IN PLACE
(REFER TO OVERHEAD SIGN STRUCTURE
ELEVATION VIEWS AND OVERHEAD
SIGN STRUCTURE DETAILS)

STA. 1462+68
PROPOSED SB CANTILEVER
STRUCTURE (REFER TO OVERHEAD
SIGN STRUCTURE ELEVATION
VIEWS AND OVERHEAD
SIGN STRUCTURE DETAILS)

ILLINOIS 13 WEST
Carbondale
↓
STA. 417+14
STR. NO. 9C1001057R054.3

ILLINOIS 13
Carbondale
Harrisburg
↓
STA. 417+14
STR. NO. 9C1001057R054.3

Morgan Avenue
↗

EXIT 53
Main St
Marion
1 MILE
STA. 1462+68
STR. NO. 9C1001057L054.0

RAMP
50
M.P.H.
STA. 1464+47

ATTRACTION
← SALINE CREEK 23% →
UNIVERSITY MALL 13%
SIU ARENA 16%
STA. 103+00

MILE
54
STA. 1468+93

RAMP
25
M.P.H.
STA. 1469+95

LODGING
SUPER 8 1/4
HAMPTON INN 1/2
DRURY INN 1/4
STA. 105+00

FILE NAME = ...D978182-shr-sign014-157.dgn	USER NAME = Brod Downen	DESIGNED - LE/JD	REVISED -
		DRAWN - MK	REVISED -
		CHECKED - SD	REVISED -
		DATE - 10/07/11	REVISED -

**STATE OF ILLINOIS
DEPARTMENT OF TRANSPORTATION**

SIGN PLAN INTERSTATE 57			
SCALE: 1" = 50'	SHEET NO. 14 OF 43 SHEETS	STA. 415+00	TO STA. 1471+00

F.A. RTE.	SECTION	COUNTY	TOTAL SHEETS	SHEET NO.
*	(X1-6-2)HBK-2, HB-1,2; (IX-1)R-1	WILLIAMSON	968	426
* F.A.I. 57 AND F.A.P. 331			CONTRACT NO. 78182	
ILLINOIS FED. AID PROJECT				

EFK Moen, LLC
Civil Engineering Design