

**EXIT 53**  
 STA. 1526+43

**RAMP 25 M.P.H.**  
 STA. 1527+30

**EXIT 54 B**  
**Morgan Avenue**  
 3/4 MILE

**EXIT 54 A**  
 ILLINOIS 13  
**Carbondale Harrisburg**  
 1/2 MILE  
 STA. 1532+00  
 STR. NO. 9S1001057L52.8

**EXIT 53**  
**Main St Marion**

**EXIT 54 A**  
 ILLINOIS 13 **EAST**  
**Marion Harrisburg**  
 1/2 MILE

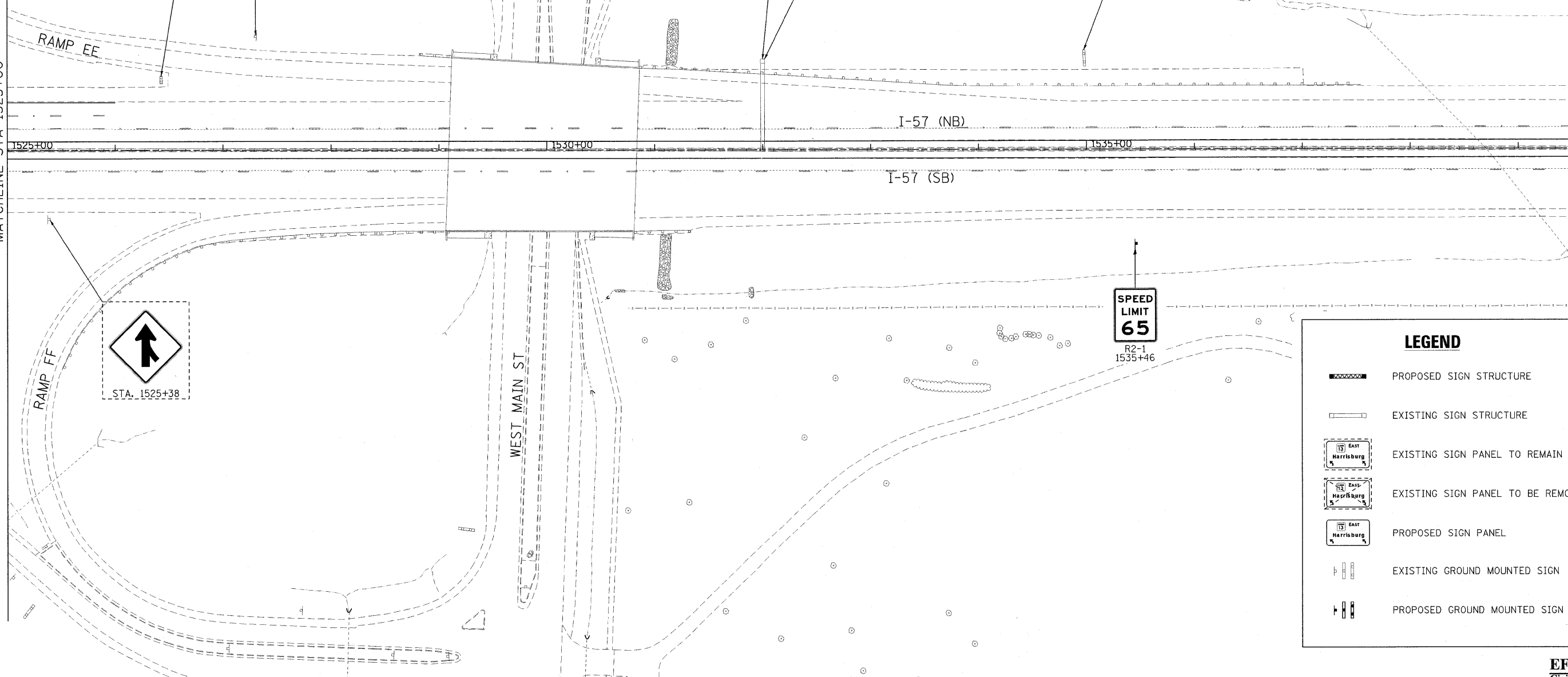
**EXIT 54 B**  
 ILLINOIS 13 **WEST**  
**Carbondale**  
 3/4 MILE  
 STA. 1532+00  
 STR. NO. 9S1001057L52.8

**V.A. Medical Center**  
**EXIT 53**  
 STA. 1534+98

STA. 1532+00  
 EXISTING OVERHEAD SIGN TRUSS STRUCTURE TO REMAIN IN PLACE (REFER TO OVERHEAD SIGN STRUCTURE ELEVATION VIEWS AND OVERHEAD SIGN STRUCTURE DETAILS)

MATCHLINE STA 1525+00

MATCHLINE STA 1540+00



LEGEND	
	PROPOSED SIGN STRUCTURE
	EXISTING SIGN STRUCTURE
	EXISTING SIGN PANEL TO REMAIN
	EXISTING SIGN PANEL TO BE REMOVED
	PROPOSED SIGN PANEL
	EXISTING GROUND MOUNTED SIGN
	PROPOSED GROUND MOUNTED SIGN

FILE NAME = ...\\D978182-sht-sign019-157.dgn	USER NAME = Brad Downen	DESIGNED - LE/JD	REVISD -	<b>STATE OF ILLINOIS DEPARTMENT OF TRANSPORTATION</b>	<b>SIGN PLAN INTERSTATE 57</b>	F.A. RTE.	SECTION	COUNTY	TOTAL SHEETS	SHEET NO.
	PLOT SCALE = 50.0000' / IN.	DRAWN - MK	REVISD -			• (X1-6-2)HBK-2, HB-1,2; (1X-1)R-1	WILLIAMSON	968	431	
	PLOT DATE = 10/10/2011	CHECKED - SD	REVISD -			• F.A.I. 57 AND F.A.P. 331	CONTRACT NO. 78182	ILLINOIS FED. AID PROJECT		
		DATE - 10/07/11	REVISD -			SCALE: 1" = 50'	SHEET NO. 19 OF 43 SHEETS	STA. 1525+00	TO STA. 1540+00	

**EFK Moen, LLC**  
 Civil Engineering Design