

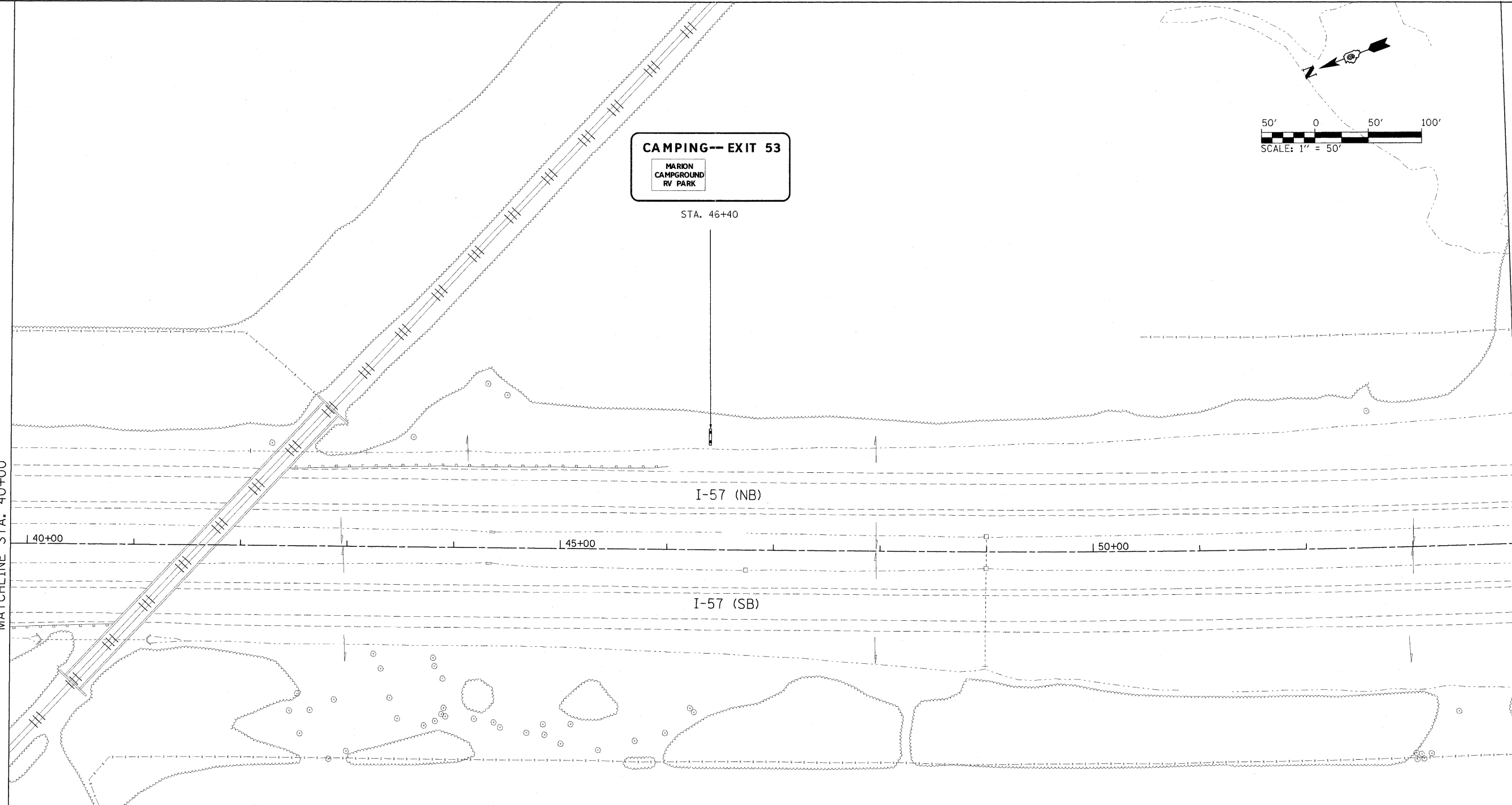


CAMPING-- EXIT 53
 MARION
 CAMPGROUND
 RV PARK

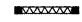

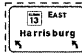

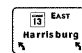
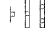
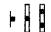
STA. 46+40

MATCHLINE STA. 40+00

MATCHLINE STA. 54+00



LEGEND

-  PROPOSED SIGN STRUCTURE
-  EXISTING SIGN STRUCTURE
-  EXISTING SIGN PANEL TO REMAIN
-  EXISTING SIGN PANEL TO BE REMOVED
-  PROPOSED SIGN PANEL
-  EXISTING GROUND MOUNTED SIGN
-  PROPOSED GROUND MOUNTED SIGN

EFK Moen, LLC
 Civil Engineering Design

FILE NAME = ...\\0978182-shit-sign825-157.dgn	USER NAME = Brad Downen	DESIGNED - LE/JD	REVISED -	STATE OF ILLINOIS DEPARTMENT OF TRANSPORTATION	SIGN PLAN INTERSTATE 57			F.A. RTE.	SECTION	COUNTY	TOTAL SHEETS	SHEET NO.
	PLOT SCALE = 50.0000' / IN.	DRAWN - MK	REVISED -		SCALE: 1" = 50'	SHEET NO. 25 OF 43 SHEETS	STA. 40+00 TO STA. 54+00	* (X1-6-2)HBK-2, HB-1,2; (IX-1R-1)	WILLIAMSON	968	437	
	PLOT DATE = 10/10/2011	CHECKED - SD	REVISED -					* F.A.I. 57 AND F.A.P. 331				CONTRACT NO. 78182
	DATE - 10/07/11	REVISED -					ILLINOIS FED. AID PROJECT					