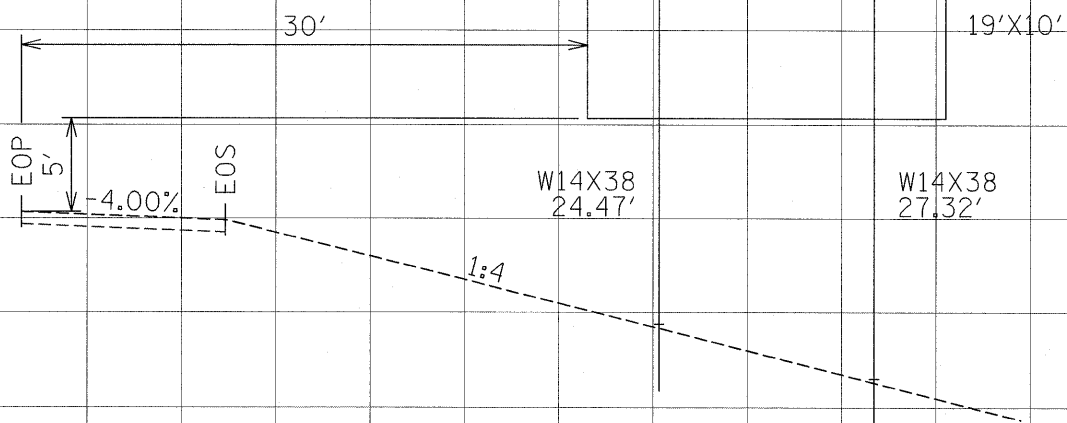
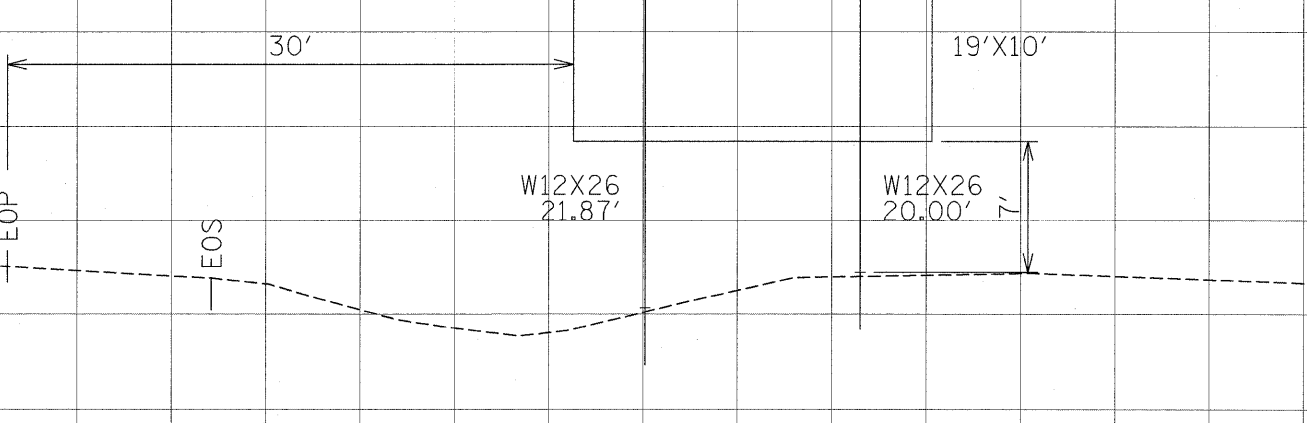


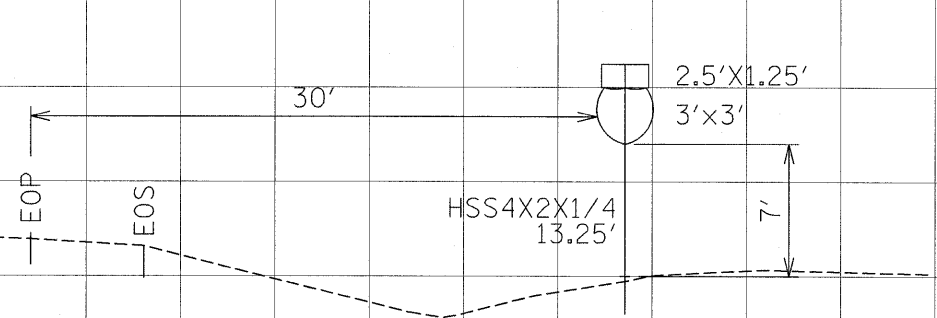
STA. 332+34, RT.  
I-57  
N=402822.6  
E=806930.4



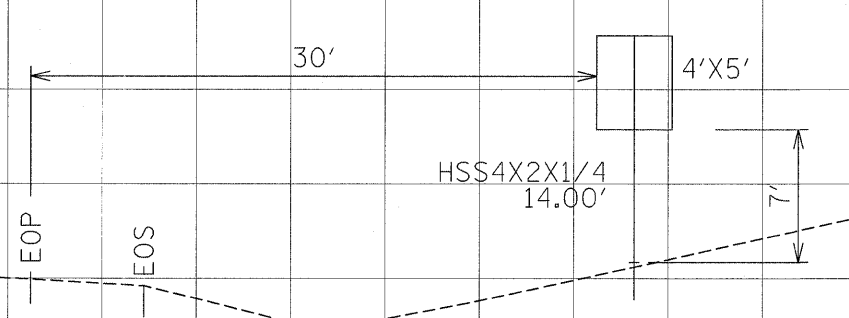
STA. 340+38, RT.  
I-57  
N=402044.7  
E=806758.4



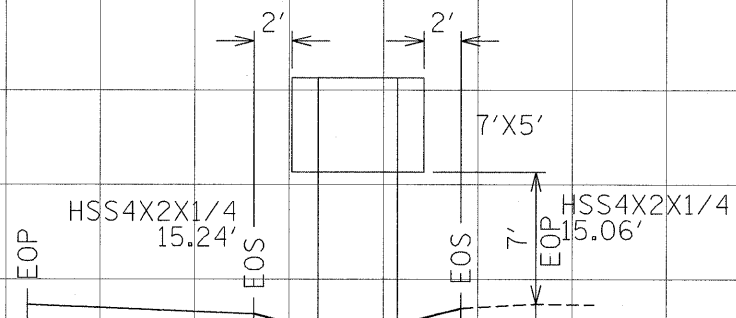
STA. 392+38, LT  
I-57



STA. 397+28, LT  
I-57



STA. 408+82, RT  
I-57



DATE	
BY	
FINAL SURVEY	
SURVEYED	
PLOTTED	
NOTE BOOK	
AREAS CHECKED	
NO.	

DATE	
BY	
ORIGINAL SURVEY	
SURVEYED	
PLOTTED	
NOTE BOOK	
AREAS CHECKED	
NO.	

**EFK Moen, LLC**  
Civil Engineering Design

FILE NAME =	USER NAME = Brad Downen	DESIGNED - JD	REVISED -	<b>STATE OF ILLINOIS DEPARTMENT OF TRANSPORTATION</b>	<b>GROUND MOUNT SIGN CROSS SECTIONS</b>	F.A. RTE.	SECTION	COUNTY	TOTAL SHEETS	SHEET NO.
...D978182-sht-sign108-122-Ground Mount Xsec.dgn	PLOT SCALE = 5.0000' / IN.	DRAWN - MK	REVISED -			• XI-6-2HKB-2,HB-1,2(XI-1)R-1	WILLIAMSON	968	523	
PLOT DATE = 10/10/2011	DATE = 10/07/11	CHECKED - SD	REVISED -			• F.A.I. 57 AND F.A.P. 331	CONTRACT NO. 78182	ILLINOIS FED. AID PROJECT		
						SCALE: 1"V = 1'H	SHEET NO. 3 OF 15 SHEETS	STA.	TO STA.	