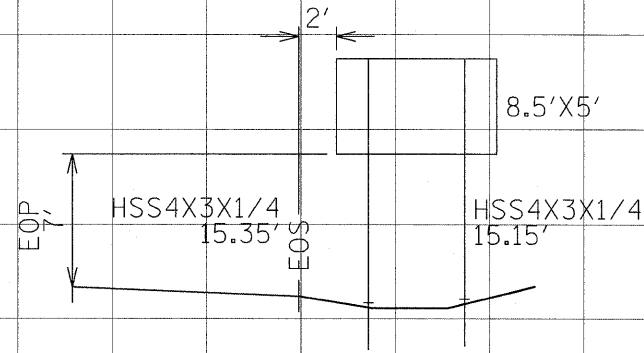
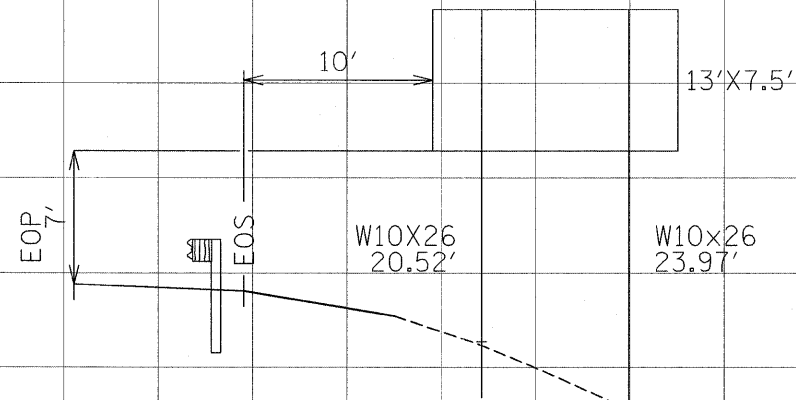


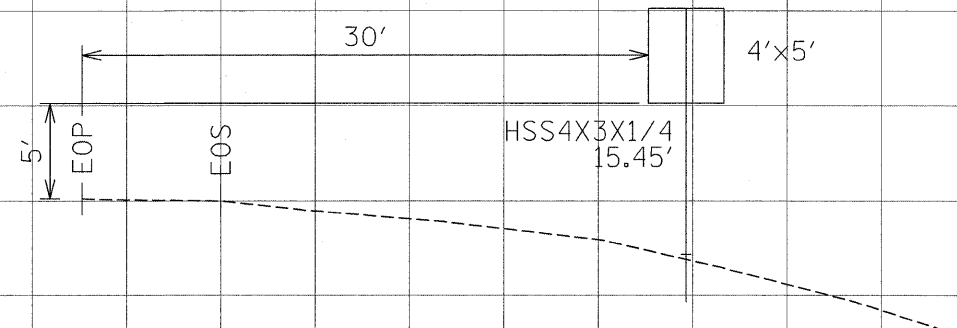
STA. 1502+14, LT
I-57



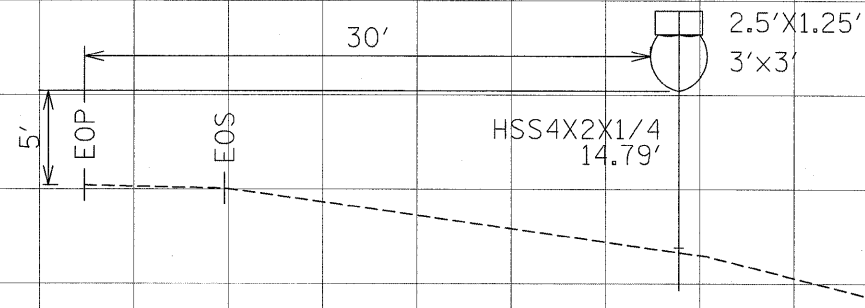
STA. 1507+57, RT
I-57



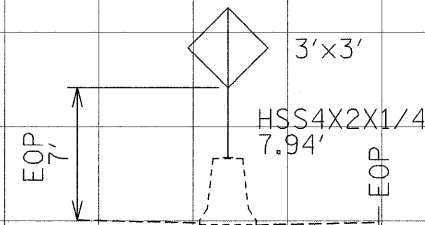
STA. 1535+46, RT
I-57



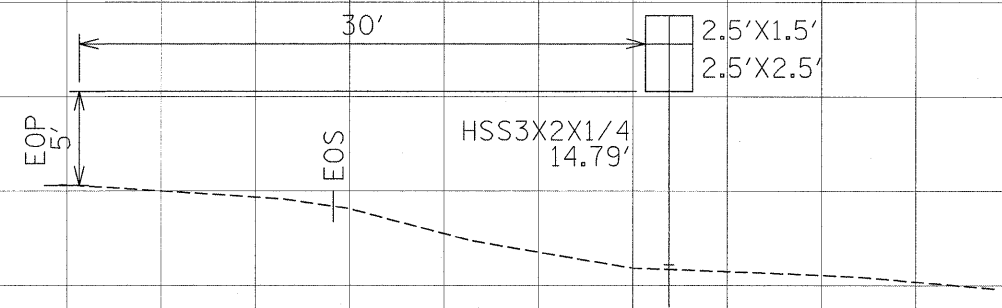
STA. 1540+46, RT
I-57



STA. 1541+52, CL
I-57



STA. 1541+82, LT
I-57



DATE	
BY	
FINAL SURVEY	
SURVEYED	
PLOTTED	
NOTE BOOK	
AREAS CHECKED	
NO.	

DATE	
BY	
ORIGINAL SURVEY	
SURVEYED	
PLOTTED	
NOTE BOOK	
AREAS CHECKED	
NO.	

EFK Moen, LLC
Civil Engineering Design

FILE NAME = ...\\D978182-sht-sign185-122-Ground Mount Xsec.dwg	USER NAME = Brad Danner	DESIGNED - JD	REVISED -	STATE OF ILLINOIS DEPARTMENT OF TRANSPORTATION	GROUND MOUNT SIGN CROSS SECTIONS	F.A. RTE.	SECTION	COUNTY	TOTAL SHEETS	SHEET NO.
		DRAWN - MK	REVISED -			* (X1-6-2)HBK-2,HB-1,2,(1X-1R-1	WILLIAMSON	968	527	
		CHECKED - SD	REVISED -			* F.A.I. 57 AND F.A.P. 331			CONTRACT NO. 78182	
		DATE - 10/07/11	REVISED -			ILLINOIS FED. AID PROJECT				
SCALE: 1" = 1'H						SHEET NO. 7 OF 15 SHEETS		STA. TO STA.		