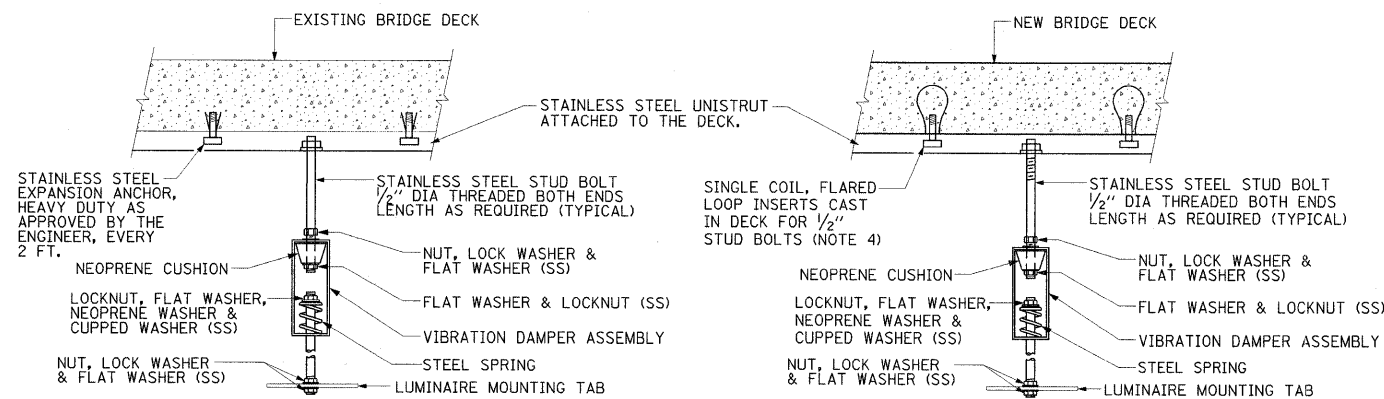
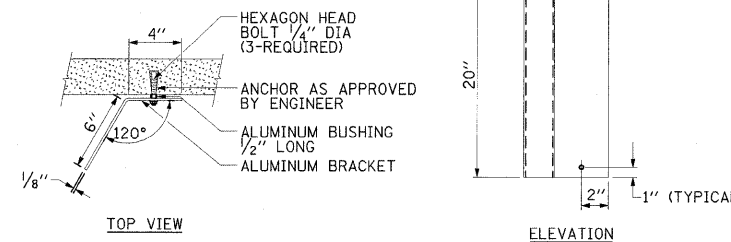


NOTES:

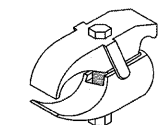
- LIQUID TIGHT FLEXIBLE NON-METALIC CONDUIT SHALL BE RESISTANT TO OIL, WATER, CHEMICAL, AND UV AND SHALL BE SUITABLE FOR OUTDOOR, DIRECT BURY, AND EXTREME COLD USE ACCORDING TO NEC ART. 356. THE CONDUIT LENGTH SHALL NOT EXCEED 6 FT. CONDUIT FITTINGS SHALL BE STAINLESS STEEL.
- SEE UNDERPASS LIGHTING PLANS FOR INSTALLATION LOCATION OF UNDERPASS LIGHTING LUMINAIRES.
- THE CONTRACTOR SHALL USE APPROVED SINGLE COIL FLARED LOOP INSERTS AND STAINLESS STEEL UNISTRUT WHEN SUSPENDED MOUNTING AN UNDERPASS LUMINAIRE TO A NEW BRIDGE DECK. THE FLARED LOOP INSERTS MUST BE CAST INTO THE CONCRETE DECK. THE CONTRACTOR IS RESPONSIBLE FOR LOCATING AND COORDINATING THE INSERT LOCATIONS FOR MOUNTING THE UNDERPASS LIGHTING SYSTEM AS SHOWN ON THE PLANS WITH THE BRIDGE DECK CONTRACTOR. SEE DETAIL.
- THE UNDERPASS LUMINAIRE HANGER ASSEMBLY COMPLETE WITH HEAVY DUTY STAINLESS STEEL ANCHORS/INSERTS AND ALL APPLICABLE HARDWARE SHALL BE INCLUDED IN THE COST OF THE UNDERPASS LUMINAIRE PAY ITEM.
- SECURE THE CONDUIT WITH CONDUIT CLAMPS OR CONDUIT BEAM CLAMPS AS SHOWN AT 5'-0" INTERVALS FOR LATERALS AND WITHIN 2'-0" MAXIMUM FROM ANY JUNCTION BOX, FLEXIBLE CONDUIT, OR CHANGE IN DIRECTION.
- ALL UNDERPASS LUMINAIRES MUST BE CENTERED IN THE BEAM SPACE AS INDICATED ON THE PLANS UNLESS OTHERWISE DIRECTED BY THE ENGR. LUMINAIRE SETBACK SHALL BE AS INDICATED IN PLANS FOR EACH SPECIFIC UNDERPASS LUMINAIRE.
- ALL HARDWARE ATTACHED TO THE BRIDGE DECK (CLAMPS, JUNCTION BOXES, LUMINAIRE HANGERS) SHALL BE STAINLESS STEEL AND SHALL BE ATTACHED TO STAINLESS STEEL UNISTRUT SYSTEM. THE CONTRACTOR IS RESPONSIBLE FOR LOCATING AND COORDINATING UNISTRUT AND INSERT LOCATIONS WITH BRIDGE DECK CONTRACTOR.



TYPICAL LUMINAIRE HANGER ASSEMBLY DETAILS



LUMINAIRE NUMBERING DECAL BRACKET NOT TO SCALE



CONDUIT BEAM CLAMP NOT TO SCALE



CONDUIT CLAMP NOT TO SCALE

FILE NAME = ...ND979182-shr-T.Lght.dtl-L36.dgn	USER NAME = Gary Davis	DESIGNED - IDOT CENTRAL OFFICE	REVISED -	STATE OF ILLINOIS DEPARTMENT OF TRANSPORTATION	SUSPENDED MOUNT UNDERPASS LUMINAIRE INSTALLATION DETAILS INTERSTATE 57		F.A. RTE.	SECTION	COUNTY	TOTAL SHEETS	SHEET NO.	
	PLOT SCALE = 1:000' / IN.	DRAWN - GLD (CMT)	REVISED -		SCALE: N.T.S.	SHEET NO. L36 OF L42 SHEETS	STA.	TO STA.	* (X1-6-2)HBK-2, HB-1,2; (X-1)R-1	WILLIAMSON	968	579
	PLOT DATE = 10/17/2011	CHECKED -	REVISED -						* F.A.I. 57 AND F.A.P. 331			
		DATE - 10/7/2011	REVISED -						ILLINOIS FED. AID PROJECT			CONTRACT NO. 78182