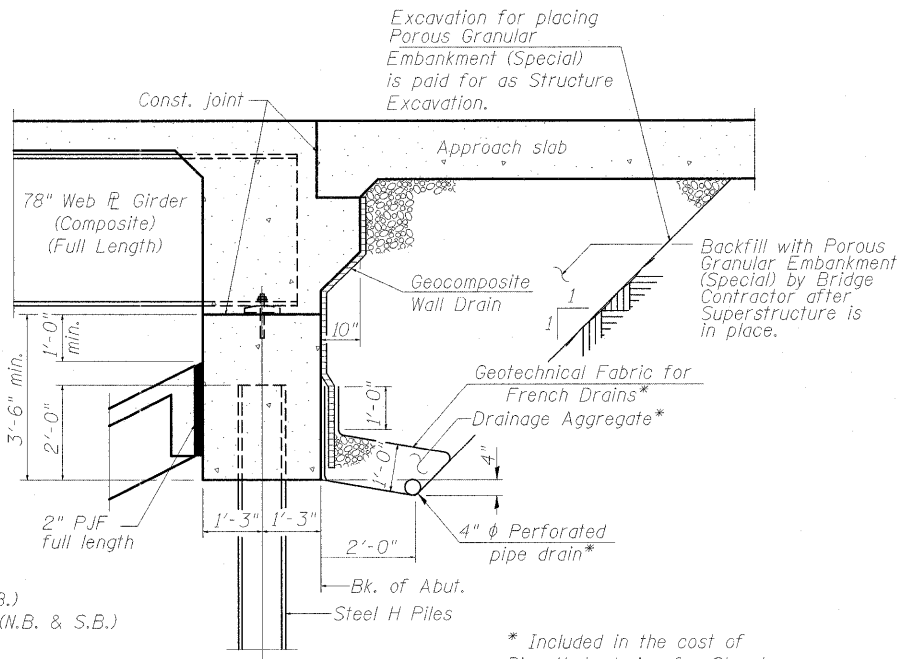


INDEX OF SHEETS

SHEET NO.	TITLE	SHEET NO.	TITLE
1.	General Plan and Elevation	39.	South Bridge Approach Slab Details (Sht. 1) (S.B.)
2.	General data	40.	South Bridge Approach Slab Details (Sht. 2) (S.B.)
3.	Footing Layout	41.	Framing Plan (N.B.)
4.	Stage Construction Details	42.	Framing Plan (S.B.)
5.-9.	Top of Slab Elevations (N.B.)	43.	Structural Steel Details (N.B.)
10.-14.	Top of Slab Elevations (S.B.)	44.	Structural Steel Details (S.B.)
15.	North Approach Slab Elevations (N.B.)	45.	Structural Steel Details - I (N.B. & S.B.)
16.	South Approach Slab Elevations (N.B.)	46.	Structural Steel Details - II (N.B. & S.B.)
17.	North Approach Slab Elevations (S.B.)	47.	North Abutment (N.B.)
18.	South Approach Slab Elevations (S.B.)	48.	South Abutment (N.B.)
19.	Superstructure I (N.B.)	49.	Wingwalls (N.B.)
20.	Superstructure II (N.B.)	50.	North Abutment (S.B.)
21.	Superstructure Details - I (N.B.)	51.	South Abutment (S.B.)
22.	Superstructure Details - II (N.B.)	52.	Wingwalls (S.B.)
23.	Superstructure I (S.B.)	53.	Pier 1 (N.B.)
24.	Superstructure II (S.B.)	54.	Pier 1 Details (N.B.)
25.	Superstructure Details - I (S.B.)	55.	Pier 2 (N.B.)
26.	Superstructure Details - II (S.B.)	56.	Pier 2 Details (N.B.)
27.	Aesthetic Details - I (N.B.)	57.	Pier 1 (S.B.)
28.	Aesthetic Details - II (N.B.)	58.	Pier 1 Details (S.B.)
29.	Aesthetic Details - I (S.B.)	59.	Pier 2 (S.B.)
30.	Aesthetic Details - II (S.B.)	60.	Pier 2 Details (S.B.)
31.	Integral Abutment diaphragm Details (N.B.)	61.	Aesthetic Details - Pier 1 and Pier 2 (N.B.)
32.	Integral Abutment diaphragm Details (S.B.)	62.	Aesthetic Details - Pier 1 and Pier 2 (S.B.)
33.	North Bridge Approach Slab Details (Sht. 1) (N.B.)	63.	Form Liner Series for Parapet and Piers (N.B. & S.B.)
34.	North Bridge Approach Slab Details (Sht. 2) (N.B.)	64.	Bar Splicer Assembly and Mechanical Splicer Details (N.B. & S.B.)
35.	South Bridge Approach Slab Details (Sht. 1) (N.B.)	65.	Drainage Scupper, DS-II (N.B. & S.B.)
36.	South Bridge Approach Slab Details (Sht. 2) (N.B.)	66.	HP Pile Details (N.B. & S.B.)
37.	North Bridge Approach Slab Details (Sht. 1) (S.B.)	67.-75.	Boring Logs I Thru IX (S.B. & N.B.)
38.	North Bridge Approach Slab Details (Sht. 2) (S.B.)		



SECTION THRU INTEGRAL ABUTMENT
(Horiz. dim. @ Rt. L's)

STATION 1490+80.49
BUILT 201_ BY
STATE OF ILLINOIS
F.A.I. RT 57 SEC. (X1-6-2)HKB-2
LOADING HL-93
STR. NO. 100-0088

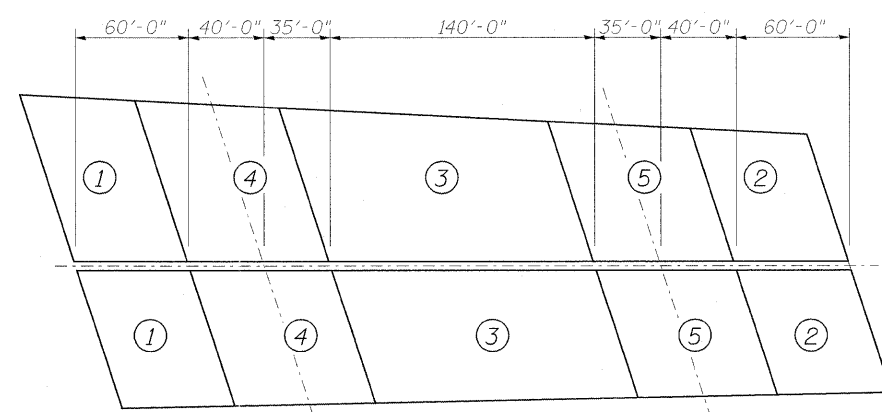
NAME PLATE #1
See Std. 515001
(Locate Name Plate on S.E. corner of parapet)

STATION 1490+80.49
BUILT 201_ BY
STATE OF ILLINOIS
F.A.I. RT 57 SEC. (X1-6-2)HKB-2
LOADING HL-93
STR. NO. 100-0089

NAME PLATE #2
See Std. 515001
(Locate Name Plate on N.W. corner of parapet)

GENERAL NOTES

- Fasteners shall be AASHTO M164 Type 1, mechanically galvanized bolts. Bolts 7/8 in. ϕ , holes 15/16 in. ϕ , unless otherwise noted.
- Calculated weight of Structural Steel = 2,800,304 lbs. (Grade 50)
Calculated weight of Structural Steel = 146,903 lbs. (Grade 36)
- No field welding is permitted except as specified in the contract documents.
- Reinforcement bars shall conform to the requirements of ASTM A 706 Gr 60.
- Reinforcement bars designated (E) shall be epoxy coated.
- Bearing seat surfaces shall be constructed or adjusted to the designated elevations within a tolerance of 1/8 inch (0.01 ft.). Adjustment shall be made either by grinding the surface or by shimming the bearings.
- The Inorganic Zinc Rich Primer / Acrylic / Acrylic Paint System shall be used for shop and field painting of new structural steel except where otherwise noted. The color of the final finish coat for all interior steel surfaces shall be Gray, Munsell No. 5B 7/1. The color of the final finish coat for the exterior and bottom flange of the fascia beams shall be Reddish Brown, Munsell No. 2.5YR 3/4
- If the Contractor elects to use cantilever forming brackets on the exterior beams or girders, the brackets shall be placed at the same locations as required for the hardwood blocks in Article 503.06(b) of the Standard Specifications. If additional cantilever forming brackets are required, hardwood blocking shall be wedged between the exterior and first interior beam at each of these additional bracket locations.
- Concrete Sealer shall be applied to designated areas of the piers.
- The embankment configuration shown shall be the minimum embankment that must be placed and compacted prior to construction of the abutments.
- When the deck pour is stopped for the day at one or more of the transverse bonded construction joints in the deck pouring sequence as shown, the next pour shall not be made until both of the following are met:
 - At least 72 hours shall have elapsed from the end of the previous pour.
 - The concrete strength shall have attained a minimum flexural strength of 650 psi or a minimum compressive strength of 3500 psi.
- The existing structural steel coating contains lead. The Contractor shall take appropriate precaution to deal with the presence of lead on this project.
- Slipforming of the parapets is not allowed.

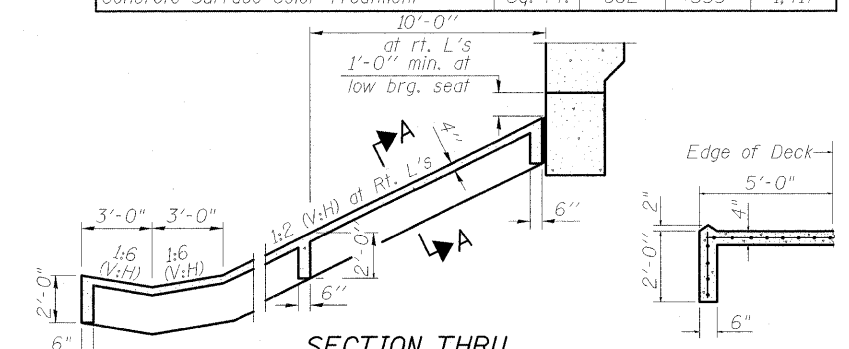


POURING SEQUENCE

Note:
The Contractor may submit a request for an alternate or a continuous pouring sequence for approval by the engineer.

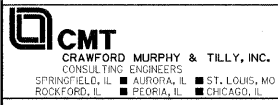
TOTAL BILL OF MATERIAL

ITEM	UNIT	SUPER	SUB	TOTAL
Structure Excavation	Cu. Yd.		4,699	4,699
Concrete Structures	Cu. Yd.		1,211.0	1,211.0
Concrete Superstructure	Cu. Yd.	2,439.4		2,439.4
Bridge Deck Grooving	Sq. Yd.	7,122		7,122
Concrete Encasement	Cu. Yd.		115.0	115.0
Form Liner Textured Surface	Sq. Ft.	862	555	1,417
Protective Coat	Sq. Yd.	8,236		8,236
Furnishing and Erecting Structural Steel	L. Sum	0.94		0.94
Stud Shear Connectors	Each	26,415		26,415
Reinforcement Bars, Epoxy Coated	Pound	681,560	235,660	917,220
Bar Splicers	Each	300		300
Slope Wall 4 Inch	Sq. Yd.		1,761	1,761
Furnishing Steel Piles HP 14x89	Foot		7,609	7,609
Driving Piles	Foot		7,609	7,609
Test Pile Steel HP 14x89	Each		1	1
Name Plates	Each	2		2
Anchor Bolts, 1"	Each	76		76
Anchor bolts 1 1/2"	Each	76		76
Concrete Sealer	Sq. Ft.		11,103	11,103
Geocomposite Wall Drain	Sq. Yd.		408	408
Porous Granular Embankment, Special	Cu. Yd.		945	945
Drainage Scuppers, DS-II	Each	8		8
Pipe Underdrains for Structures, 4"	Foot		438	438
Floor Drains	Each		21	21
Temporary Soil Retention System	Sq. Ft.		5,224	5,224
Removal of Existing Structures	Each		2	2
Preformed Joint Strip Seal	Foot		440	440
Staining Concrete Structures	Sq. Yd.	346	1,235	1,581
Concrete Surface Color Treatment	Sq. Ft.	862	555	1,417



SECTION THRU CONCRETE SLOPEWALL SECTION A-A

Note:
Slope wall shall be reinforced with welded wire fabric, 6 in. x 6 in. - W4.0 x W4.0, weighting 58lbs. per 100 sq. ft.



FILE NAME = ...I-57-002-GENERAL DATA.dgn
USER NAME = Gary Davis
DESIGNED - BPD
CHECKED - WLB
DRAWN - GLD
PLOT DATE = 12/14/2011

DESIGNED - BPD	REVISIONS
CHECKED - WLB	REVISIONS
DRAWN - GLD	REVISIONS
CHECKED - BPD	REVISIONS

STATE OF ILLINOIS
DEPARTMENT OF TRANSPORTATION

GENERAL DATA
STRUCTURE NO. 100-0088 (N.B.) & 100-0089 (S.B.)
SHEET NO. 2 OF 75 SHEETS

F.A. RTE.	SECTION	COUNTY	TOTAL SHEETS	SHEET NO.
* I-57	(X1-6-2)HKB-2	WILLIAMSON	968	587
* F.A.I. 57 AND F.A.P. 331				CONTRACT NO. 78182

ILLINOIS FED. AID PROJECT