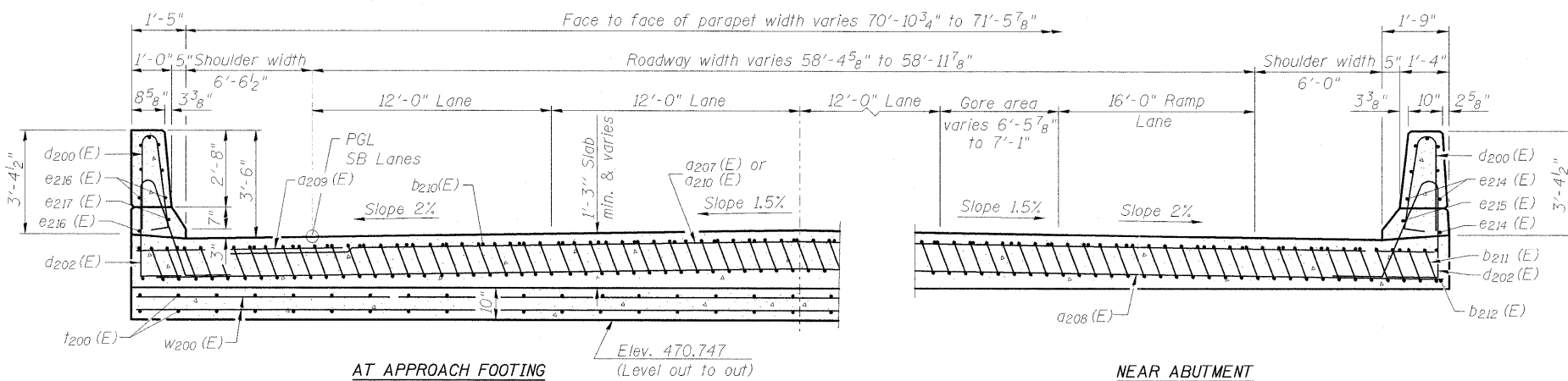
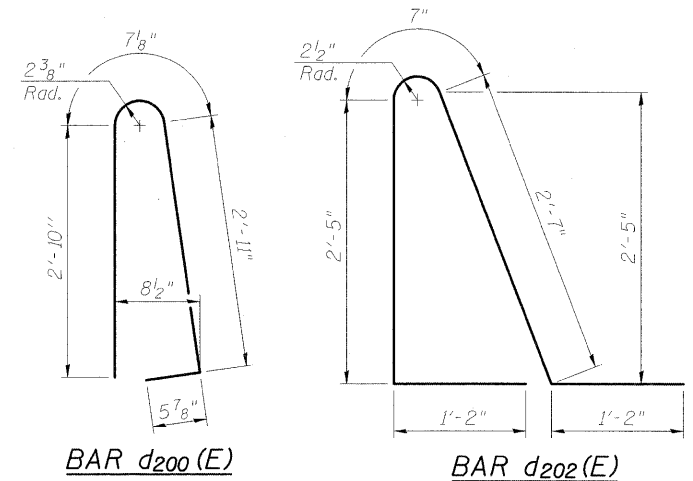


NOTES:

1. See sheet 37 of 75 for Detail A and View B-B.
2. Approach slab and parapet concrete shall be paid for as Concrete Superstructure.
3. Approach footing concrete shall be paid for as Concrete Structures.
4. Reinforcement shall be paid for as Reinforcement Bars, Epoxy Coated.
5. For w_{215} (E) bar details, see sheet 25 of 75.
6. The approach footing maximum applied service bearing pressure (Q_{max}) = 2.0 ksf.
7. For bar splicer details, see sheet 65 of 75.
8. Cost of excavation for approach footing included with Concrete Structures.
9. For Porous Granular Embankment (Special) and drainage treatment details, see sheet 2 of 75.
10. For additional parapet details, see sheet 24 of 75.

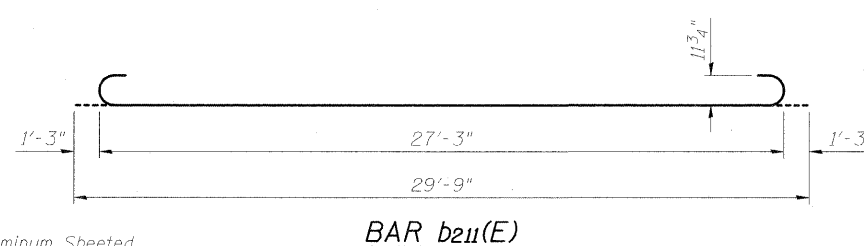
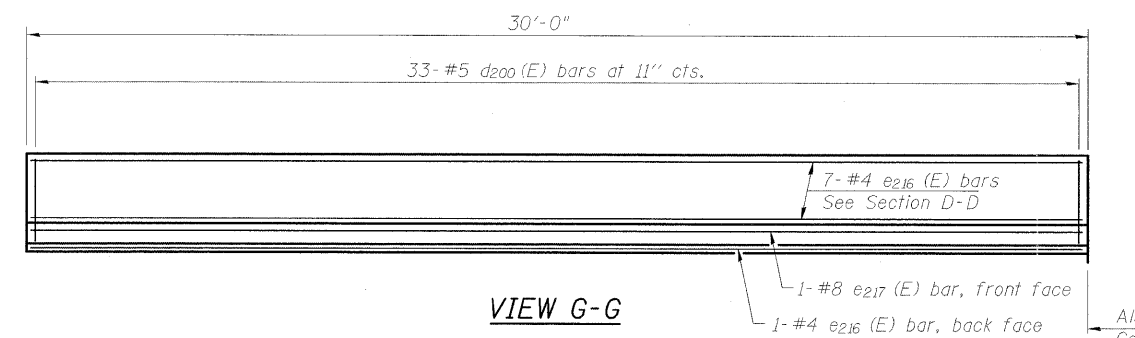
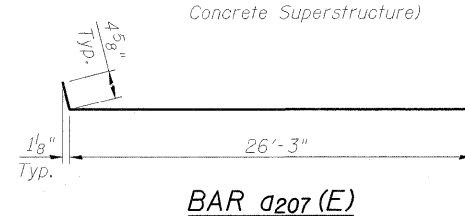
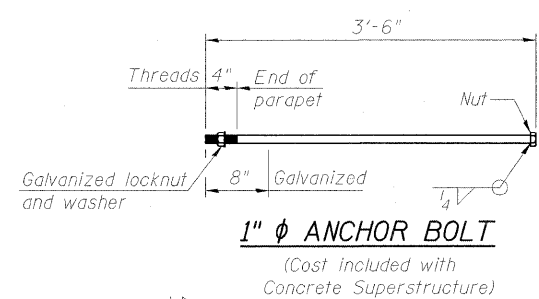
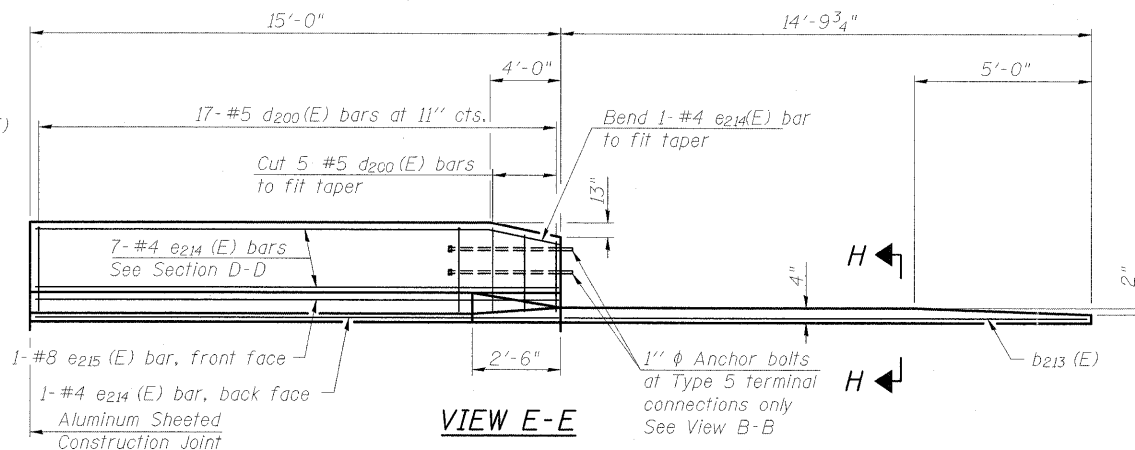
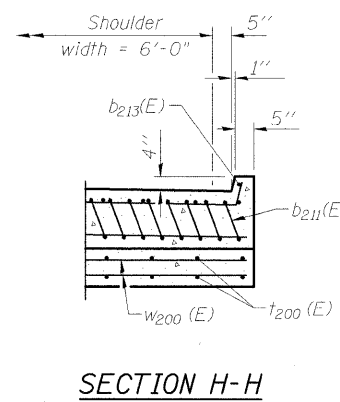


* Tilt #9 b_{211} (E) bars as required to maintain clearance.

*** Cost included with Concrete Superstructure.

BILL OF MATERIAL

Bar	No.	Size	Length	Shape
a_{207} (E)	50	#4	26'-8"	—
a_{208} (E)	138	#5	28'-0"	—
a_{209} (E)	36	#6	6'-6"	—
a_{210} (E)	25	#4	30'-0"	—
b_{210} (E)	59	#4	29'-8"	—
b_{211} (E)	175	#9	29'-9"	—
b_{212} (E)	1	#4	14'-8"	—
b_{213} (E)	1	#4	14'-5"	—
d_{200} (E)	50	#5	6'-10"	—
d_{202} (E)	50	#5	7'-11"	—
e_{214} (E)	8	#4	14'-8"	—
e_{215} (E)	1	#8	14'-8"	—
e_{216} (E)	8	#4	29'-8"	—
e_{217} (E)	1	#8	29'-8"	—
t_{200} (E)	148	#4	10'-2"	—
w_{200} (E)	120	#5	28'-0"	—
Structure Excavation		Cu. Yd.	34	
Concrete Structures		Cu. Yd.	23.9	
Concrete Superstructure		Cu. Yd.	117.5	
Bridge Deck Grooving		Sq. Yd.	231	
Protective Coat		Sq. Yd.	261	
Reinforcement Bars, Epoxy Coated		Pound	30,300	
Staining Concrete Structure		Sq. Yd.	6	



(Sheet 2 of 2)

CMT
CRAWFORD MURPHY & TILLY, INC.
CONSULTING ENGINEERS
SPRINGFIELD, ILL. ■ AURORA, ILL. ■ ST. LOUIS, MO
ROCKFORD, ILL. ■ PEORIA, ILL. ■ CHICAGO, ILL.

FILE NAME = ...1030.NO BR APP SLAB DTLS-H-15B.dgn
USER NAME = Rob Heady
PLOT SCALE =
PLOT DATE = 10/7/2011

DESIGNED - BPD
CHECKED - WLB
DRAWN - GLD
CHECKED - BPD

REVISED -
REVISED -
REVISED -
REVISED -

**STATE OF ILLINOIS
DEPARTMENT OF TRANSPORTATION**

**NORTH BRIDGE APPROACH SLAB DETAILS
STRUCTURE NO. 100-0089 (S.B.)**

SHEET NO. 38 OF 75 SHEETS

F.A. RTE.	SECTION	COUNTY	TOTAL SHEETS	SHEET NO.
*	(X1-6-2)HBK-2	WILLIAMSON	968	623
* F.A.I. 57 AND F.A.P. 331 CONTRACT NO. 78182				
ILLINOIS FED. AID PROJECT				