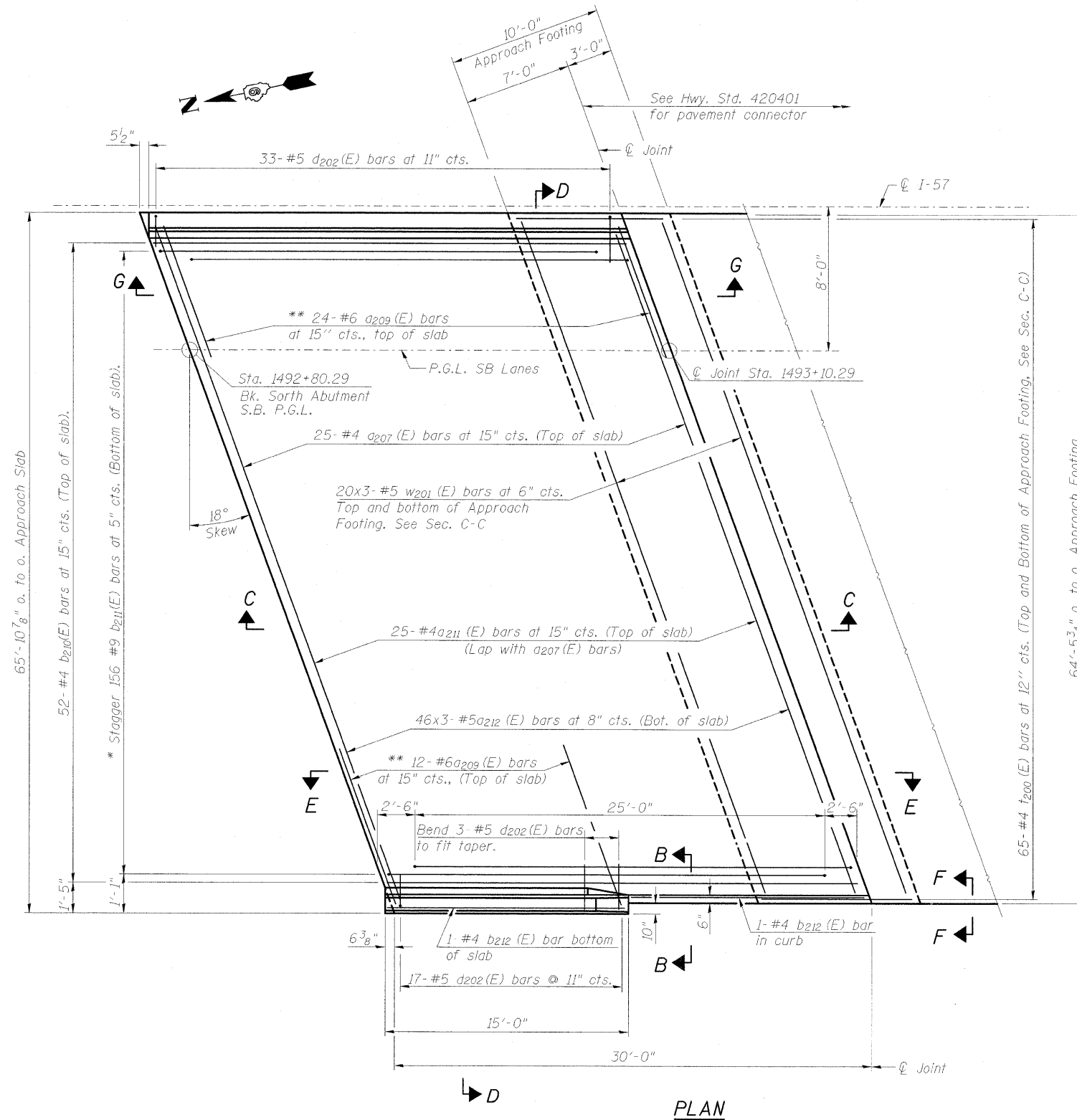


**NOTES:**

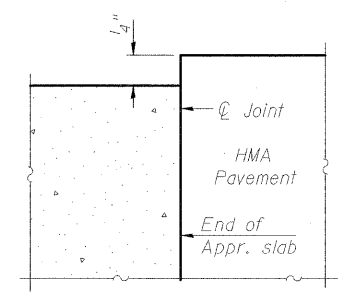
1. See sheet 40 of 75 for Sections C-C & D-D and View E-E & G-G.
2. a207(E), a211(E) and a212(E) bar spacings measured along PGL.
3. Bars indicated thus 20x3-#5 etc. indicates 20 lines of bars with 3 lengths per line.



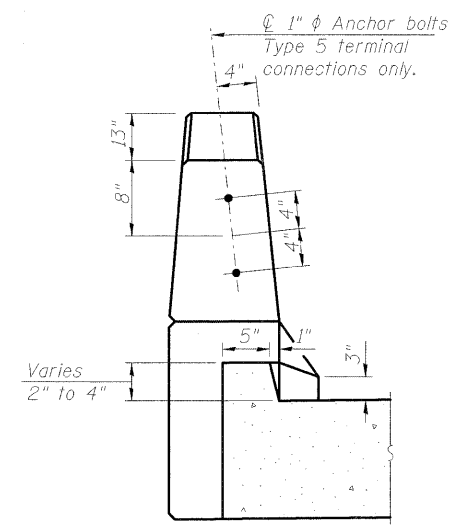
**PLAN**

**MINIMUM BAR LAP**  
 #4 bar = 2'-7"  
 #5 bar = 3'-3"

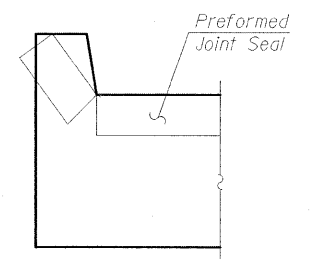
\* Tilt #9 b211(E) bars as required to maintain clearance.  
 \*\* Space between a207(E) bars, typ. each parapet.



**FLEXIBLE PAVEMENT  
 DETAIL A**



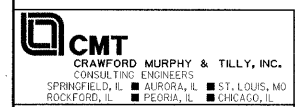
**VIEW B-B**



**VIEW F-F**

Angle Preformed Joint Seal at 45° at curbs when req'd for drainage.

(Sheet 1 of 2)



FILE NAME = ... \031.S0 BR APP SLAB DTLS-1-SB.dgn  
 USER NAME = Rob Heady  
 PLOT SCALE =  
 PLOT DATE = 10/7/2011

DESIGNED - BPD	REVISD -
CHECKED - WLB	REVISD -
DRAWN - GLD	REVISD -
CHECKED - BPD	REVISD -

**STATE OF ILLINOIS  
 DEPARTMENT OF TRANSPORTATION**

**SOUTH BRIDGE APPROACH SLAB DETAILS  
 STRUCTURE NO. 100-0089 (S.B.)**  
 SHEET NO. 39 OF 75 SHEETS

F.A. RTE.	SECTION	COUNTY	TOTAL SHEETS	SHEET NO.
*	OX1-6-2HKB-2	WILLIAMSON	968	624
* F.A.I. 57 AND F.A.P. 331		CONTRACT NO. 78182		
ILLINOIS FED. AID PROJECT				