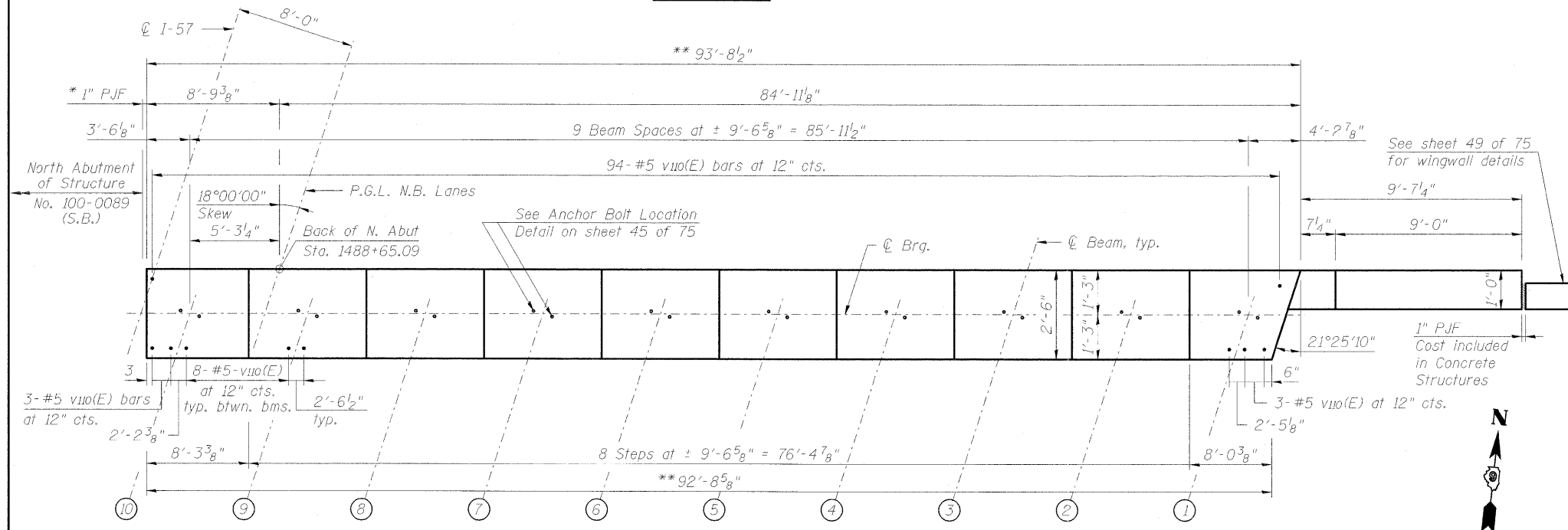
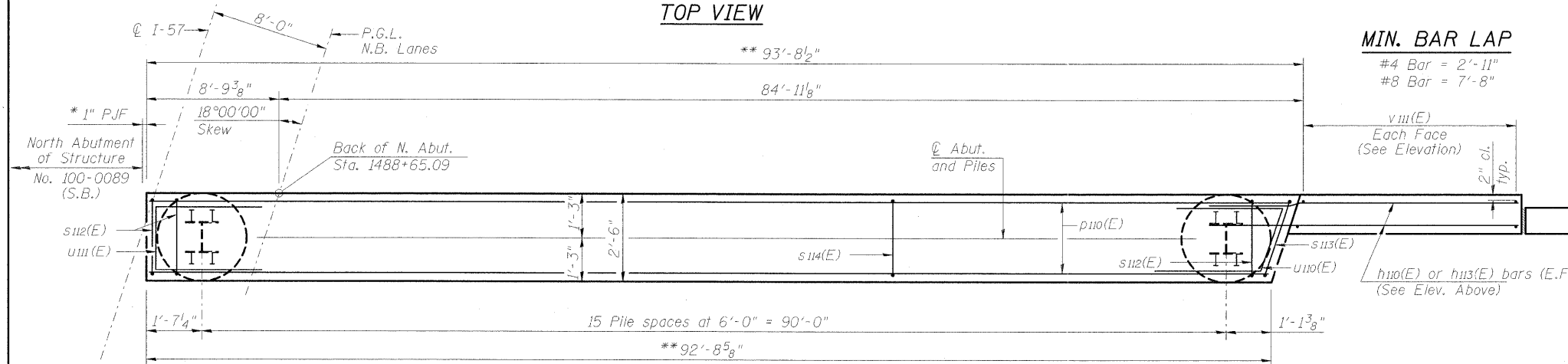


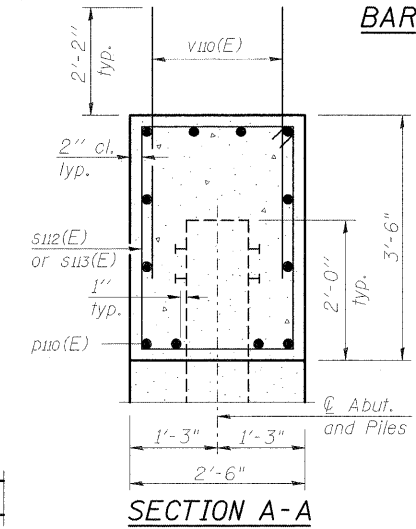
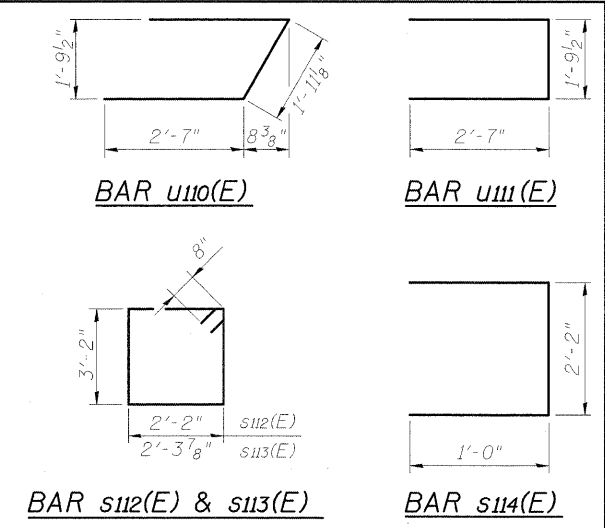
ELEVATION



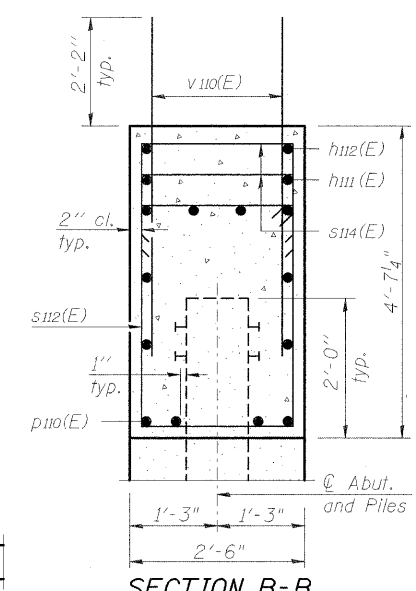
TOP VIEW



PILE CAP PLAN



SECTION A-A



SECTION B-B

FIELD CUTTING DIAGRAM

Order v110(E) full length. Cut as shown and use remainder of bars in opposite face.

NORTH ABUTMENT (N.B.) BILL OF MATERIAL

Bar	No.	Size	Length	Shape
h110(E)	32	#7	13'-8"	—
h111(E)	4	#4	39'-0"	—
h112(E)	4	#4	25'-3"	—
h113(E)	12	#6	13'-8"	—
p110(E)	36	#8	36'-0"	—
s112(E)	108	#6	12'-0"	□
s113(E)	1	#6	12'-4"	□
s114(E)	123	#4	4'-2"	□
u110(E)	4	#6	7'-2"	⌋
u111(E)	4	#6	7'-0"	⌋
v110(E)	172	#5	4' 4"	—
v111(E)	10	#5	19'-1"	—
Structure Excavation		Cu. Yd.	66	
Concrete Structures		Cu. Yd.	39.6	
Concrete Encasement		Cu. Yd.	8.8	
Reinforcement Bars, Epoxy Coated		Pound	8,150	
Furnishing Steel Piles HP14x89		Foot	864	
Driving Piles		Foot	864	
Test Pile Steel HP14x89		Each	0	

PILE DATA

Type: Steel HP 14x89
 Nominal Required Bearing: 705k
 Factored Resistance Available: 388k
 Est. Length: 54'
 No. Production Piles: 16
 No. Test Piles: 0
 Estimated Top of Rock Elevation: 423.10

Notes:
 Pour steps monolithically with cap.
 Space reinforcement to miss anchor bolts.
 See Sheet 2 of 75 for abutment backfill requirements.
 See Sheet 66 of 75 for steel H-pile and Concrete Encasement details.

CMT
 CRAWFORD MURPHY & TILLY, INC.
 CONSULTING ENGINEERS
 SPRINGFIELD, IL ■ AURORA, IL ■ ST. LOUIS, MO
 ROCKFORD, IL ■ PEORIA, IL ■ CHICAGO, IL

FILE NAME = ...1-57-038.NORTH ABUT.NB.dgn
 USER NAME = Rob Heady
 PLOT SCALE =
 PLOT DATE = 10/7/2011

DESIGNED - JDJ	REVISÉ -
CHECKED - REB	REVISÉ -
DRAWN - GLD	REVISÉ -
CHECKED - REB	REVISÉ -

STATE OF ILLINOIS
DEPARTMENT OF TRANSPORTATION

NORTH ABUTMENT
STRUCTURE NO. 100-0088 (N.B.)
 SHEET NO. 47 OF 75 SHEETS

F.A.I. RTE. 57	SECTION (X1-6-2)HBK-2	COUNTY WILLIAMSON	TOTAL SHEETS 968	SHEET NO. 632
			CONTRACT NO. 78182	
ILLINOIS FED. AID PROJECT				