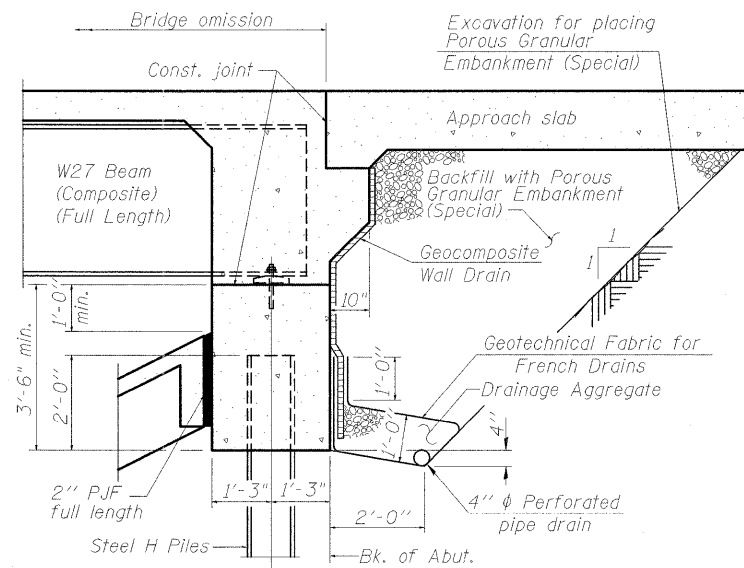


**GENERAL NOTES**

- Fasteners shall be AASHTO M164 Type 1, mechanically galvanized bolts. Bolts  $\frac{7}{8}$  in.  $\phi$ , holes  $\frac{15}{16}$  in.  $\phi$ , unless otherwise noted.
- Calculated weight of Structural Steel = 59,960 lbs. (M270 Grade 50)
- Calculated weight of Structural Steel = 6,100 lbs. (M270 Grade 36)
- No field welding is permitted except as specified in the contract documents.
- Reinforcement bars shall conform to the requirements of ASTM A 706 Grade 60.
- Reinforcement bars designated (E) shall be epoxy coated.
- Bearing seat surfaces shall be constructed or adjusted to the designated elevations within a tolerance of  $\frac{1}{8}$  inch (0.01 ft.). Adjustment shall be made either by grinding the surface or by shimming the bearings.
- The Inorganic Zinc Rich Primer / Acrylic / Acrylic Paint System shall be used for shop and field painting of new structural steel except where otherwise noted. The color of the final finish coat for all interior steel surfaces shall be gray, Munsell No. 5B 7/1. The color of the final finish coat for the exterior and bottom flange of the fascia beams shall be Reddish Brown, Munsell No. 2.5YR 3/4
- Concrete Sealer shall be applied to designated areas of the piers.
- The embankment configuration shown shall be the minimum embankment that must be placed and compacted prior to construction of the abutments.
- Slope wall shall be reinforced with welded wire fabric, 6 in. x 6 in. - W4.0 x W4.0, weighing 58 lbs. per 100 sq. ft.
- Slipforming of concrete parapets is not allowed.



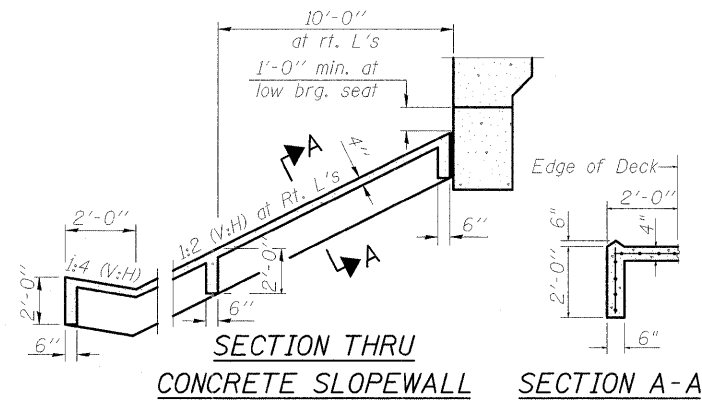
**SECTION THRU INTEGRAL ABUTMENT**

(Horiz. dim. @ Rt. L's)

STATION 14+30.01  
 BUILT 2011 BY  
 STATE OF ILLINOIS  
 F.A.I.-57 RAMP 1  
 SEC. (X1-6-2)HB-1  
 LOADING HL-93  
 STR. NO. 100-0097

**NAME PLATE**

See Std. 515001



**TOTAL BILL OF MATERIAL**

ITEM	UNIT	SUPER	SUB	TOTAL
Porous Granular Embankment, Special	Cu. Yd.		109	109
Structure Excavation	Cu. Yd.		561	561
Concrete Structures	Cu. Yd.		292.8	292.8
Concrete Superstructure	Cu. Yd.	240.2		240.2
Bridge Deck Grooving	Sq. Yd.	518		518
Concrete Encasement	Cu. Yd.		4.2	4.2
Protective Coat	Sq. Yd.	707		707
Furnishing and Erecting Structural Steel	L. Sum	0.02		0.02
Stud Shear Connectors	Each	2865		2865
Reinforcement Bars, Epoxy Coated	Pound	61,690	55,690	117,380
Bar Splicers	Each	58		58
Slope Wall 4 Inch	Sq. Yd.		354	354
Furnishing Steel Piles HP 12x53	Foot		633	633
Driving Piles	Foot		633	633
Test Pile Steel HP 12x53	Each		4	4
Name Plates	Each	1		1
Anchor Bolts, 1"	Each		40	40
Geocomposite Wall Drain	Sq. Yd.		68	68
Pipe Underdrains for Structures 4"	Foot		145	145
Mechanical Splicers	Each		292	292
Concrete Sealer	Sq. Ft.		1148	1148
Temporary Soil Retention System	Sq. Ft.		990	990



FILE NAME = ...\\ramp\INGENERAL\_DATA\_002.dgn  
 USER NAME = Gary Davis  
 PLOT SCALE =  
 PLOT DATE = 12/14/2011

DESIGNED - BPD	REVISIONS
CHECKED - REB	REVISIONS
DRAWN - GLD	REVISIONS
CHECKED - BPD	REVISIONS

**STATE OF ILLINOIS  
 DEPARTMENT OF TRANSPORTATION**

**GENERAL DATA  
 STRUCTURE NO. 100-0097**

SHEET NO. 2 OF 23 SHEETS

F.A. RTE.	SECTION	COUNTY	TOTAL SHEETS	SHEET NO.
*	(X1-6-2)HB-1	WILLIAMSON	968	662
* F.A.I. 57 AND F.A.P. 331		CONTRACT NO. 78182		
ILLINOIS FED. AID PROJECT				