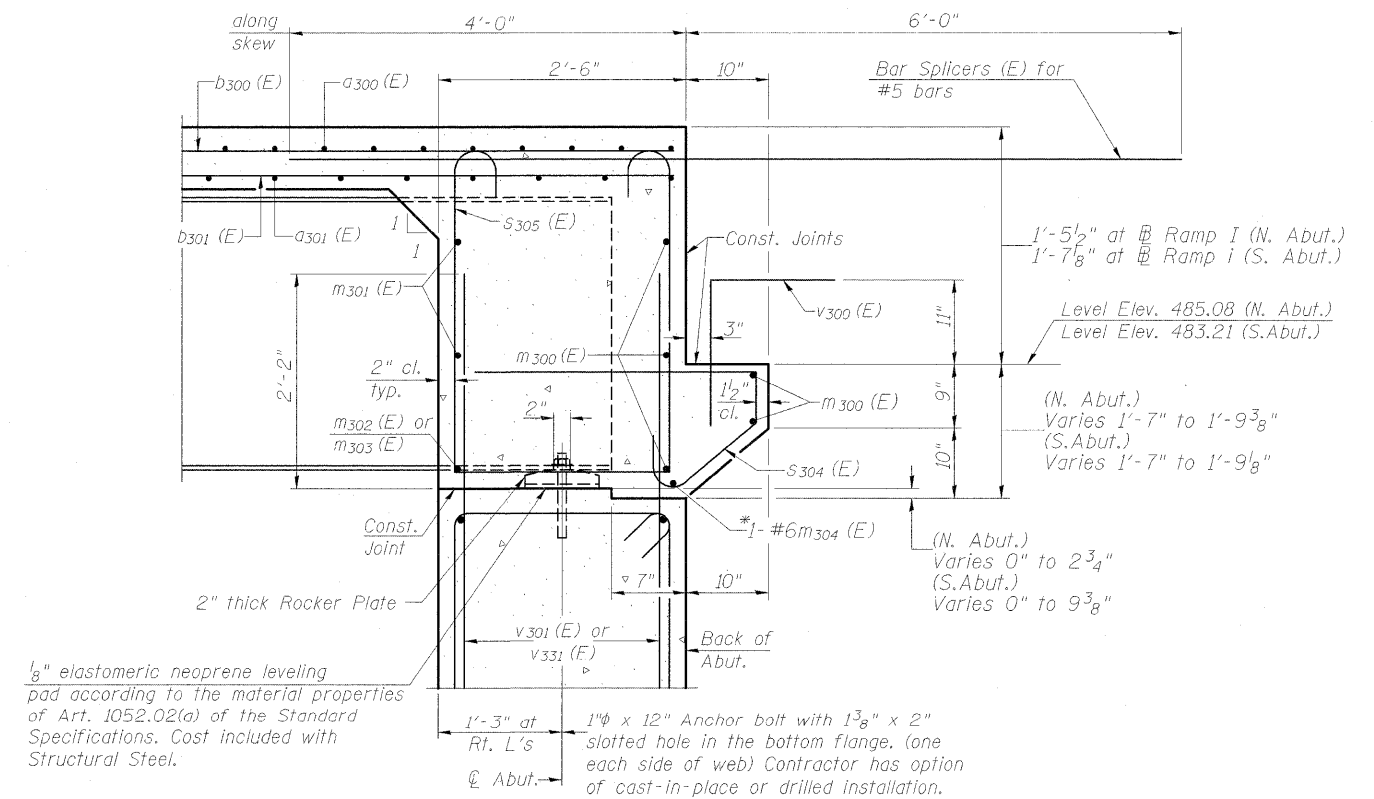


**DIAPHRAGM ELEVATION AT ABUTMENT**

Notes:  
 Reinforcement bars in diaphragm are billed with superstructure on sheet 7 of 23.  
 Concrete in diaphragm is included with Concrete Superstructure on sheet 7 of 23.  
 For details of bars s304(E) & s305(E) see sheet 7 of 23.  
 The s304(E) and s305(E) bars shall be placed parallel to the beams. Spacing for these bars shall be at right angles to the beams.

**MIN. BAR LAP**  
 #6 bar = 3'-4"



**SECTION B-B**

Dimensions at right angles to abutment, except as shown.

\*South Abutment only, where notch depth exceeds 4".



FILE NAME = ... \INT ABUT DIAPH DETAILS\_008.dgn  
 USER NAME = Rob Heady  
 PLOT SCALE =  
 PLOT DATE = 10/7/2011

DESIGNED - BPD	REVISIONS
CHECKED - REB	1
DRAWN - GLD	2
CHECKED - BPD	3

REVISIONS	DATE
1	
2	
3	

**STATE OF ILLINOIS  
 DEPARTMENT OF TRANSPORTATION**

**INTEGRAL ABUTMENT DIAPHRAGM DETAILS  
 STRUCTURE NO. 100-0097**

SHEET NO. 8 OF 23 SHEETS

F.A. RTE.	SECTION	COUNTY	TOTAL SHEETS	SHEET NO.
*	(X1-6-2)HB-1	WILLIAMSON	968	668
* F.A.I. 57 AND F.A.P. 331		CONTRACT NO. 78182		
ILLINOIS FED. AID PROJECT				