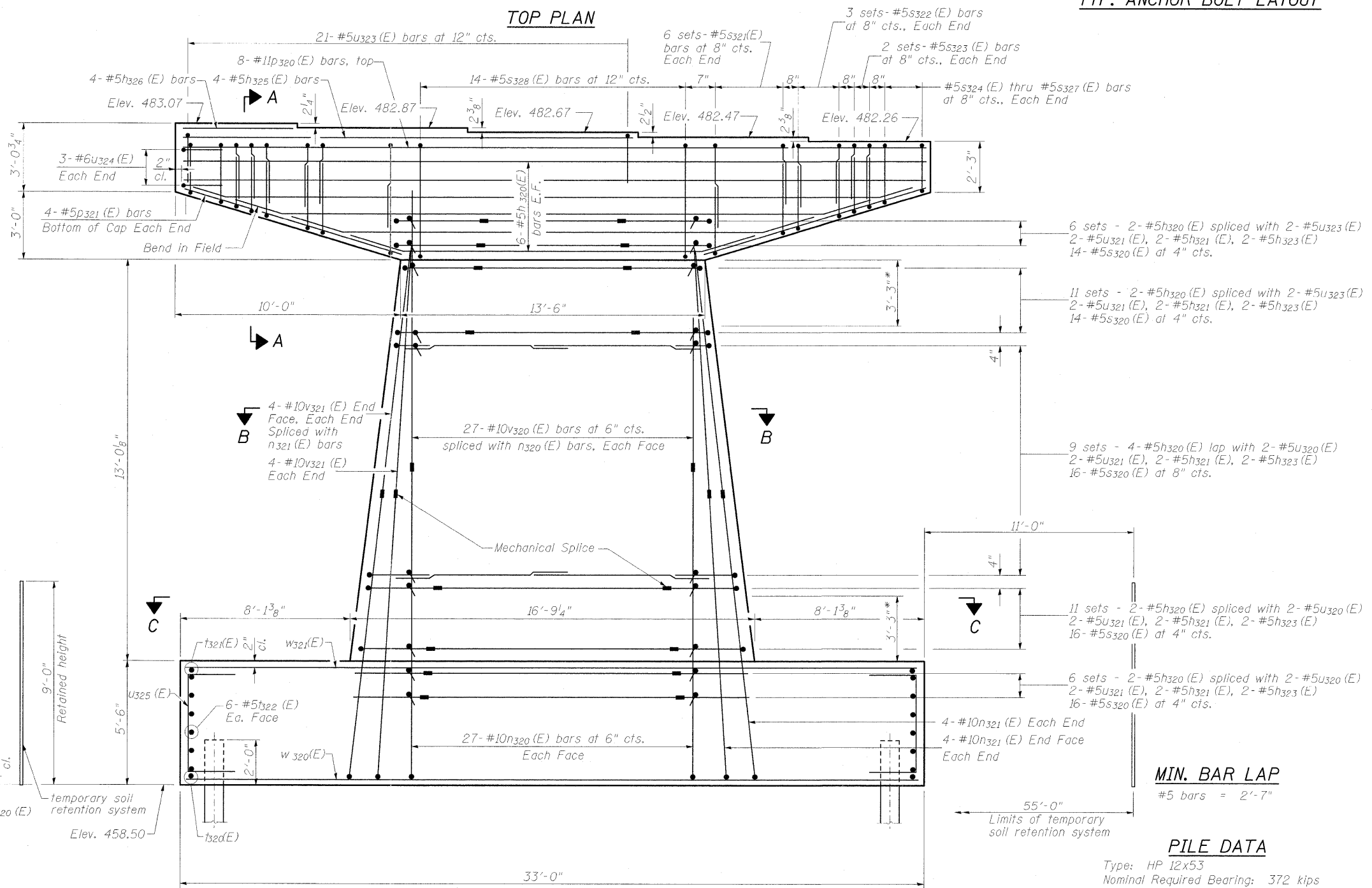
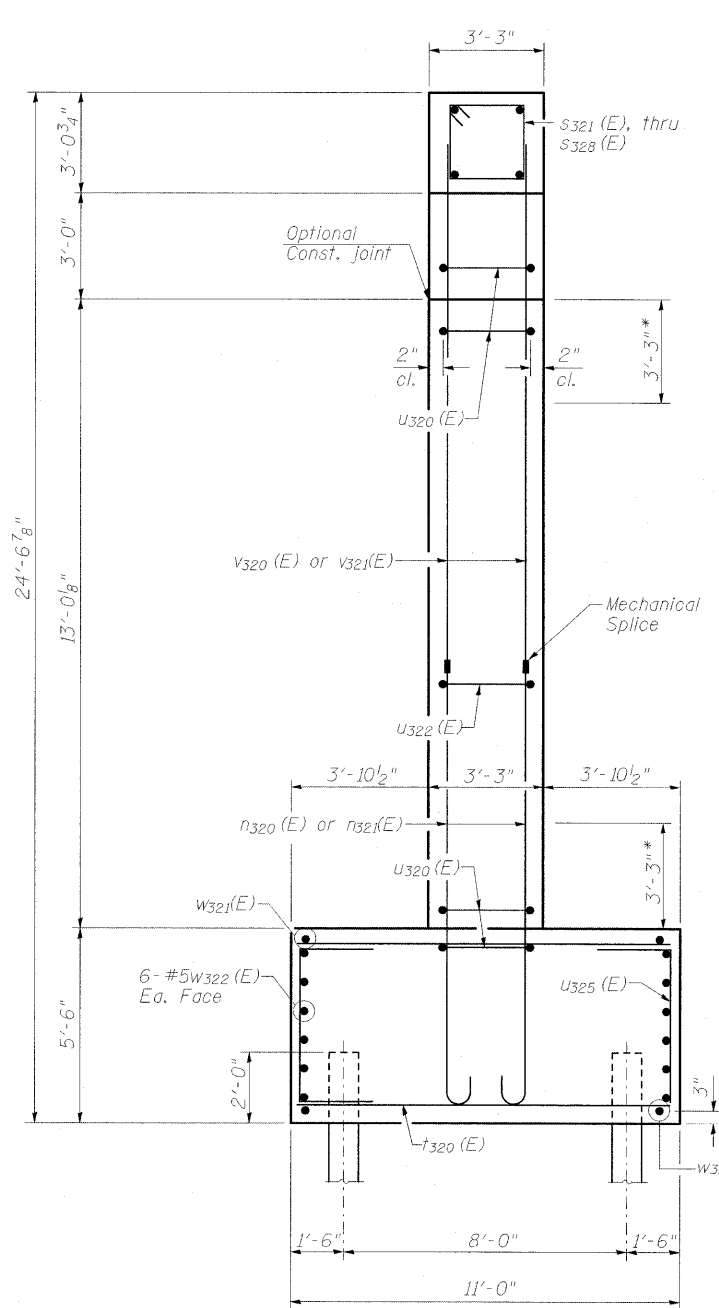
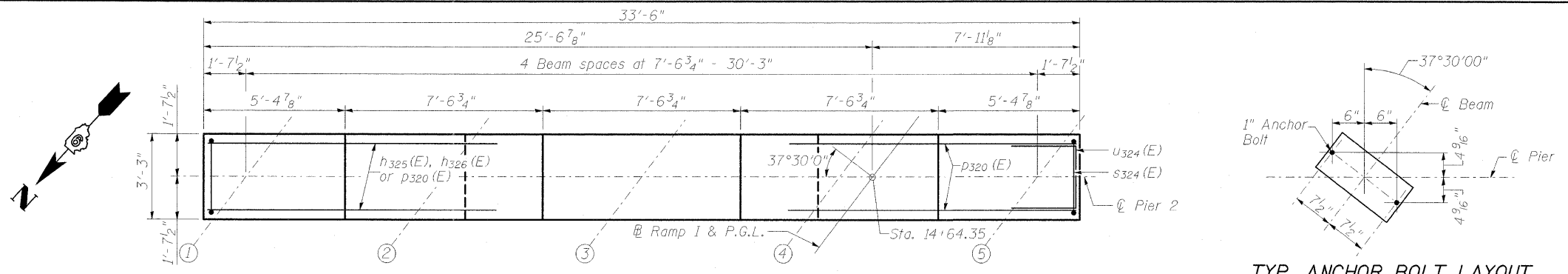
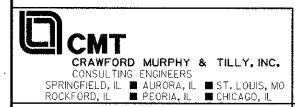


Notes:
 Space reinforcement in cap to miss anchor bolts.
 Pour steps monolithically with cap.
 For details of piles, see sheet 21 of 23.
 Each set of s321 (E), s322 (E) and s323 (E) bars has 2 bars (1 top and 1 bottom). See Section A-A.
 For details of Mechanical Splice, see sheet 19 of 23.
 Concrete Sealer shall be applied to both faces, both ends and top of pier.
 A cantilevered sheet piling design does not appear feasible and additional members or other retention systems may be necessary. The Contractor shall submit a temporary soil retention system design including plan details and calculations for review and acceptance by the Engineer.



MIN. BAR LAP
 #5 bars = 2'-7"

PILE DATA
 Type: HP 12x53
 Nominal Required Bearing: 372 kips
 Factored Resistance Available: 205 kips
 Est. Length: 15 ft.
 No. Production Piles: 11
 No. Test Piles: 1



FILE NAME = ...Ramp INPIER 2.017.dgn
 USER NAME = Rob Heady
 PLOT SCALE =
 PLOT DATE = 10/7/2011

DESIGNED - BPD	REVISD -
CHECKED - REB	REVISD -
DRAWN - GLD	REVISD -
CHECKED - BPD	REVISD -

STATE OF ILLINOIS
DEPARTMENT OF TRANSPORTATION

PIER 2
STRUCTURE NO. 100-0097
 SHEET NO. 17 OF 23 SHEETS

F.A. RTE.	SECTION	COUNTY	TOTAL SHEETS	SHEET NO.
*	01-6-21HB-1	WILLIAMSON	968	677
* F.A.I. 57 AND F.A.P. 331		CONTRACT NO. 78182		
[ILLINOIS] FED. AID PROJECT				