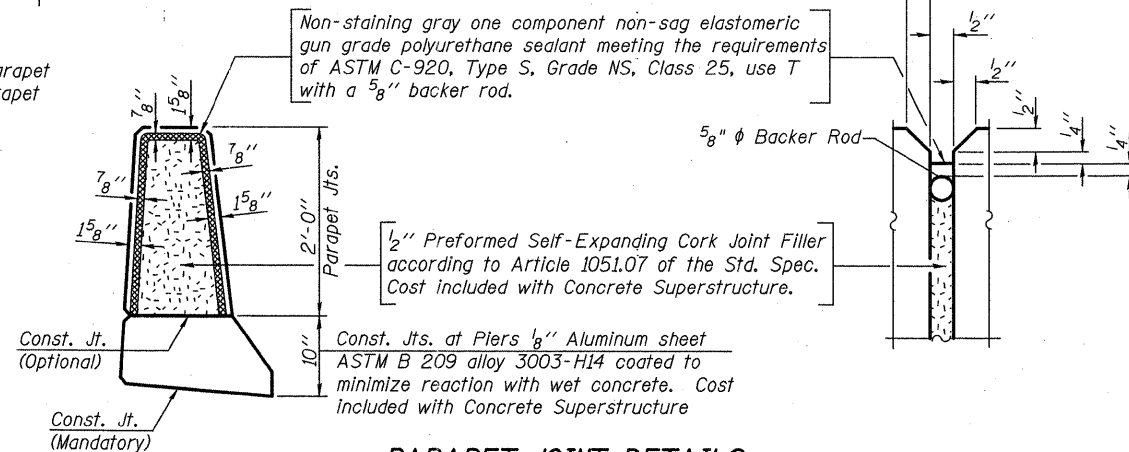
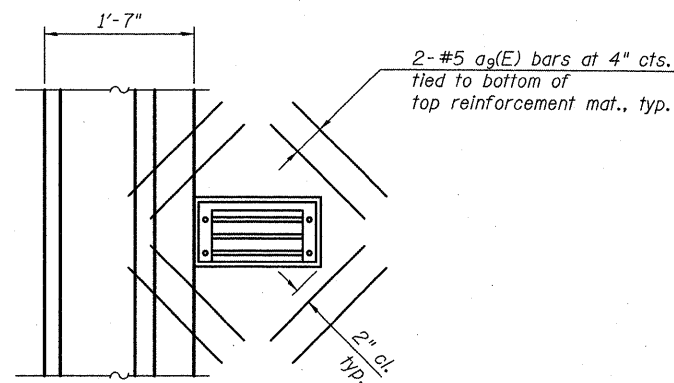


**SECTION THRU PARAPET**

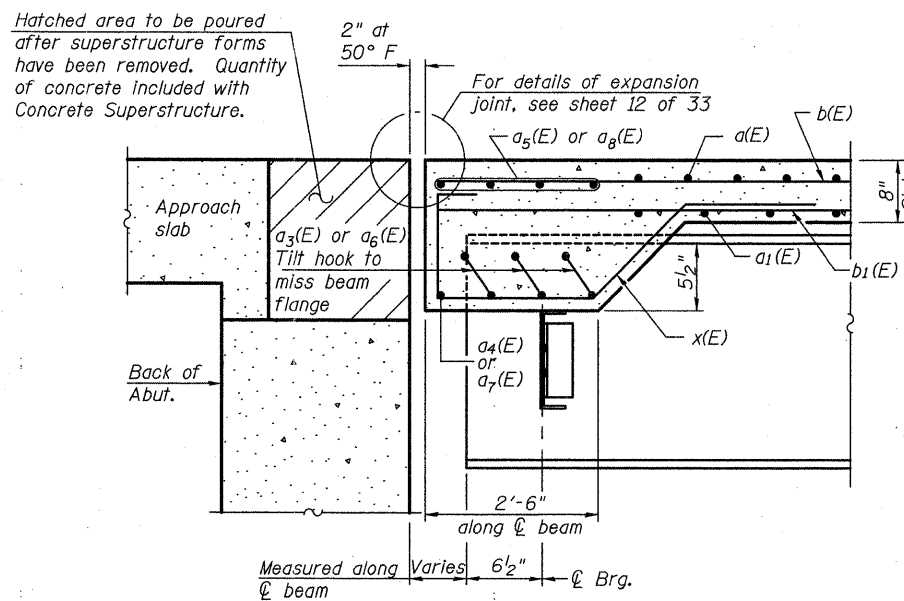


**PARAPET JOINT DETAILS**

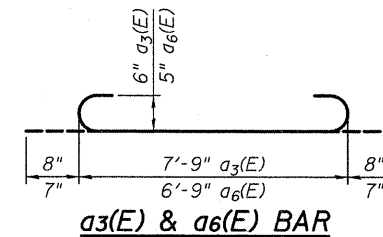


**PLAN AT SCUPPER**

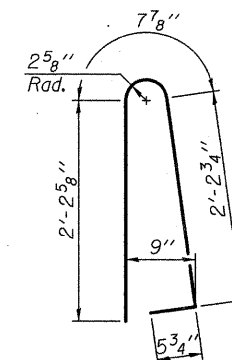
Notes:  
Cut longitudinal reinforcement to clear drainage scuppers.



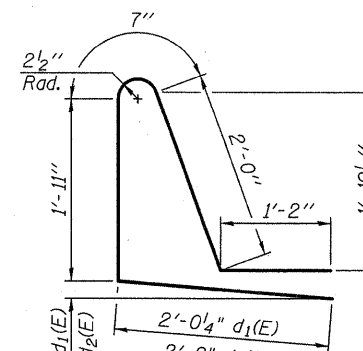
**SECTION A-A**



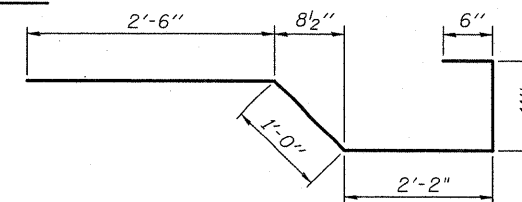
**a3(E) & a6(E) BAR**



**BAR d(E)**



**BAR d1(E) & d2(E)**



**BAR x(E)**

**SUPERSTRUCTURE BILL OF MATERIAL**

Bar	No.	Size	Length	Shape
a(E)	322	#5	30'-6"	—
a1(E)	209	#5	29'-10"	—
a2(E)	618	#6	6'-6"	—
a3(E)	9	#6	9'-1"	—
a4(E)	1	#6	38'-10"	—
a5(E)	4	#5	38'-10"	—
a6(E)	9	#5	7'-11"	—
a7(E)	1	#6	33'-9"	—
a8(E)	4	#5	33'-9"	—
a9(E)	16	#5	1'-6"	—
b(E)	238	#5	26'-11"	—
b1(E)	66	#6	36'-10"	—
b2(E)	130	#5	30'-11"	—
d(E)	377	#5	5'-7"	—
d1(E)	185	#5	7'-8"	—
d2(E)	187	#5	7'-8"	—
e(E)	64	#4	9'-6"	—
e1(E)	21	#4	13'-11"	—
e2(E)	42	#4	14'-6"	—
e3(E)	42	#4	14'-10"	—
e4(E)	21	#4	14'-3"	—
e5(E)	8	#8	9'-6"	—
e6(E)	2	#8	23'-9"	—
e7(E)	4	#8	24'-9"	—
e8(E)	4	#8	25'-1"	—
e9(E)	2	#8	24'-3"	—
e10(E)	2	#4	22'-2"	—
e11(E)	4	#4	23'-2"	—
e12(E)	4	#4	23'-6"	—
e13(E)	2	#4	22'-8"	—
x(E)	48	#5	7'-1"	—
Reinforcement Bars, Epoxy Coated			Pound	47,230
Concrete Superstructure			Cu. Yds.	191.0
Bridge Deck Grooving			Sq. Yd.	496
Protective Coat			Sq. Yd.	701

Bars indicated thus 1 x 3-#8 etc. Indicates 1 line of bars with 3 lengths per line.

2:18:35 PM 9/7/2011 10000098-78182-009-Super\_Details2.dgn  
 10000098-78182-009-Super\_Details2.dgn  
 10000098-78182-009-Super\_Details2.dgn  
 10000098-78182-009-Super\_Details2.dgn

**EFK Moen, LLC**  
 Civil Engineering Design  
 331 Salem Place, Suite 225  
 Fairview Heights, IL 62208  
 Phone 618-266-4250  
**S-D**

1-28-11 (Modified)

FILE NAME =	USER NAME =	DESIGNED -	REVISIONS -
10000098-78182-009-Super_Details2.dgn	je	CTW	
		CHECKED -	REVISIONS -
		CDL	
		DRAWN -	REVISIONS -
		DP	
		DATE -	REVISIONS -
		9/7/2011	

PLOT SCALE =	0.1L/0.000	1" =	10' IN.
PLOT DATE =	9/7/2011		

**STATE OF ILLINOIS**  
**DEPARTMENT OF TRANSPORTATION**

**SUPERSTRUCTURE DETAILS**  
**STRUCTURE NO. 100-0098**

SHEET NO. 9 OF 33 SHEETS

F.A.I. RTE.	SECTION	COUNTY	TOTAL SHEETS	SHEET NO.
57	(X1-6-2)HB-2	WILLIAMSON	968	692
				CONTRACT NO. 78182

ILLINOIS FED. AID PROJECT