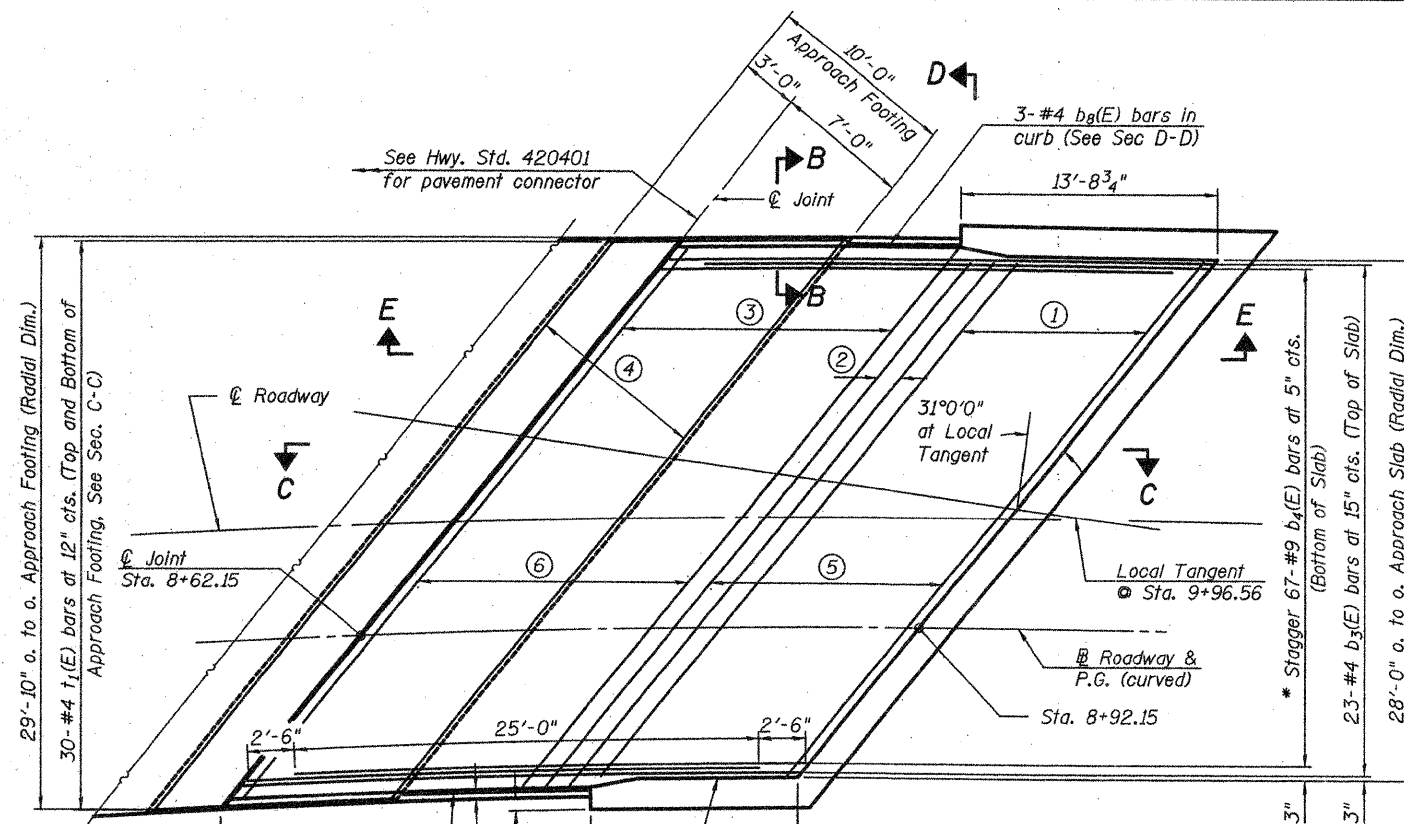
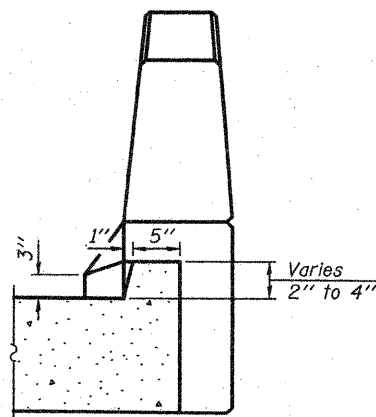


Notes:
 See sheet 11 of 33 for Sections C-C & D-D and View E-E.
 a₁(E) and a₁(E) bar spacings measured along \mathcal{C} Rdwy.
 Approach Slabs are on curved alignment, see Sheet 6 of 33 for layout dimension.



PLAN
(West Approach)

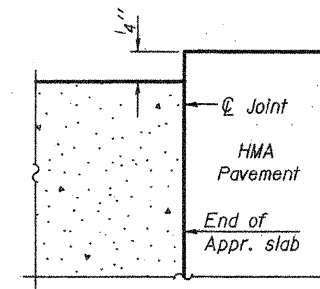
* Tilt #9 b₄(E) bars as required to maintain clearance.
 ** Closed cell joint filler according to Article 1051.08 of the Standard Specifications: full depth of slab, full length of parapet. Typ. each parapet.



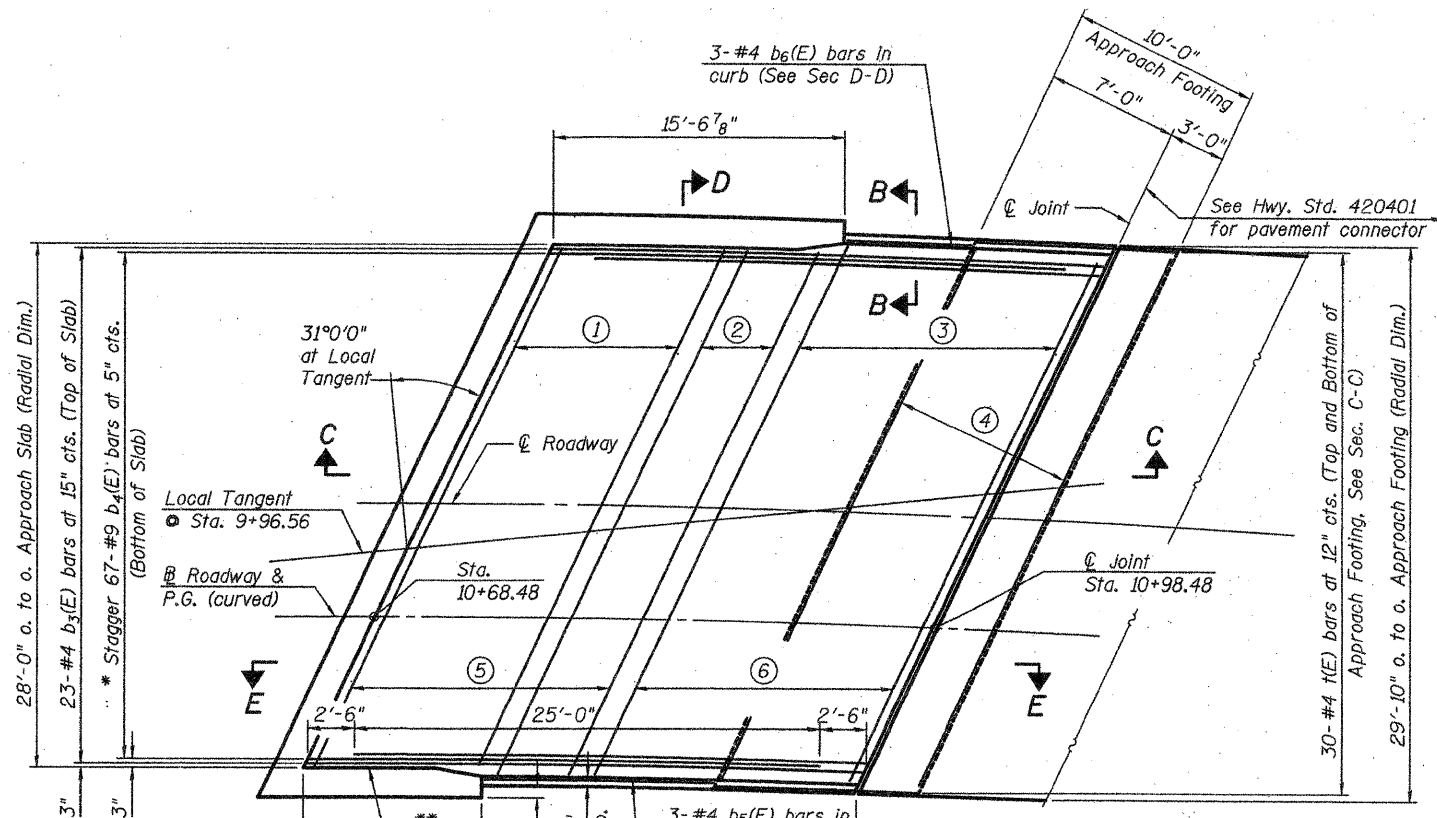
VIEW B-B

West Approach Only

- ① 9-#4 a₅(E) bars at 15" cts. (Top of Slab)
- ② 2-#4 a₆(E) bars at 15" cts. (Top of Slab)
- ③ 13-#4 a₇(E) bars at 15" cts. (Top of Slab)
- ④ 20-#5 w₁(E) bars at 6" cts. (Top and bottom of Approach Footing). See Sec C-C
- ⑤ 20-#5 a₈(E) bars at 8" cts. (Bottom of Slab)
- ⑥ 25-#5 a₉(E) bars at 8" cts. (Bottom of Slab)



**FLEXIBLE PAVEMENT
DETAIL A**



PLAN
(East Approach)

* Tilt #9 b₄(E) bars as required to maintain clearance.
 ** Closed cell joint filler according to Article 1051.09 of the Standard Specifications: full depth of slab, full length of parapet. Typ. each parapet.

East Approach Only

- ① 8-#4 a₁₀(E) bars at 15" cts. (Top of Slab)
- ② 4-#4 a₁₁(E) bars at 15" cts. (Top of Slab)
- ③ 13-#4 a₁₂(E) bars at 15" cts. (Top of Slab)
- ④ 20-#5 w₂(E) bars at 6" cts. (Top and bottom of Approach Footing). See Sec C-C
- ⑤ 22-#5 a₁₃(E) bars at 8" cts. (Bottom of Slab)
- ⑥ 24-#5 a₁₄(E) bars at 8" cts. (Bottom of Slab)

(Sheet 1 of 2)

PRINT DATE: 9/7/2011 2:18:37 PM z:\180235-1-57 end 113 mizechange.dgn\bridge\180235-1-57-Appr-Slab.dgn
 FILE NAME: 180235-1-57 end 113 mizechange.dgn\bridge\180235-1-57-Appr-Slab.dgn
 USER NAME: ja
 DESIGNED: CTW
 CHECKED: CDL
 DRAWN: DP
 DATE: 9/7/2011
 REVISED: -
 REVISED: -
 REVISED: -
 REVISED: -
 STATE OF ILLINOIS
 DEPARTMENT OF TRANSPORTATION
 BRIDGE APPROACH SLAB DETAILS
 STRUCTURE NO. 100-0098
 SHEET NO. 10 OF 33 SHEETS
 F.A.I. RTE. 57
 SECTION (X1-6-2)HB-2
 COUNTY WILLIAMSON
 TOTAL SHEETS 968
 SHEET NO. 693
 CONTRACT NO. 78182
 ILLINOIS FED. AID PROJECT

EFK Moen, LLC
 Civil Engineering Design
 331 Salem Place, Suite 225
 Fairview Heights, IL 62208
 Phone 618-266-4250