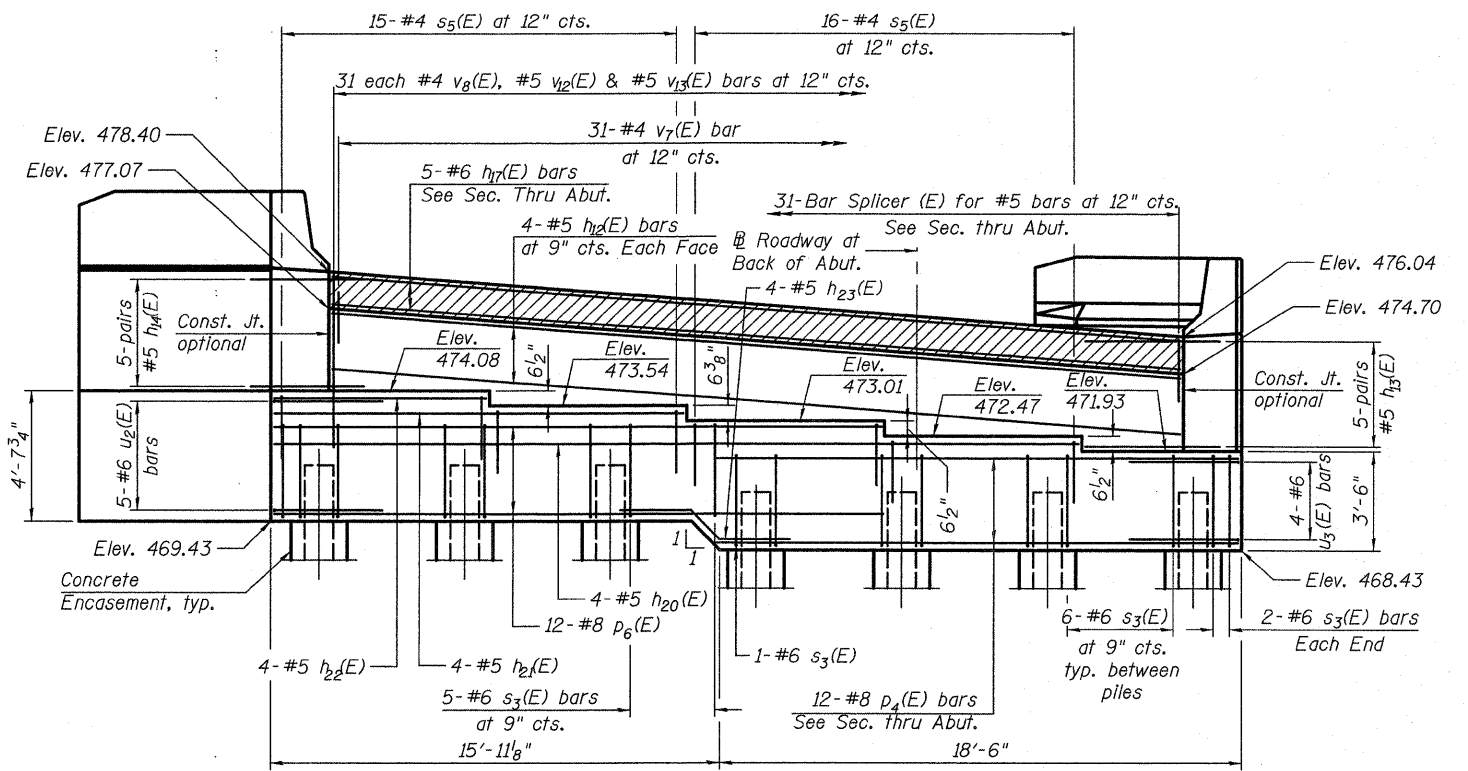


SEC. THRU ABUT.

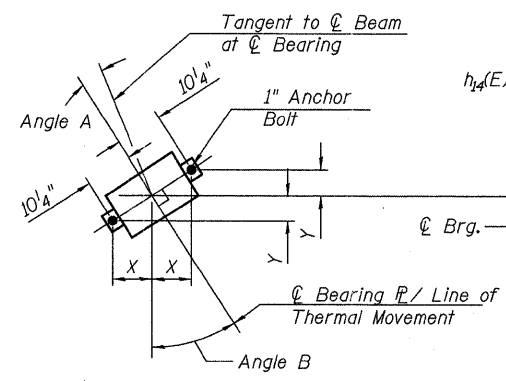


ELEVATION

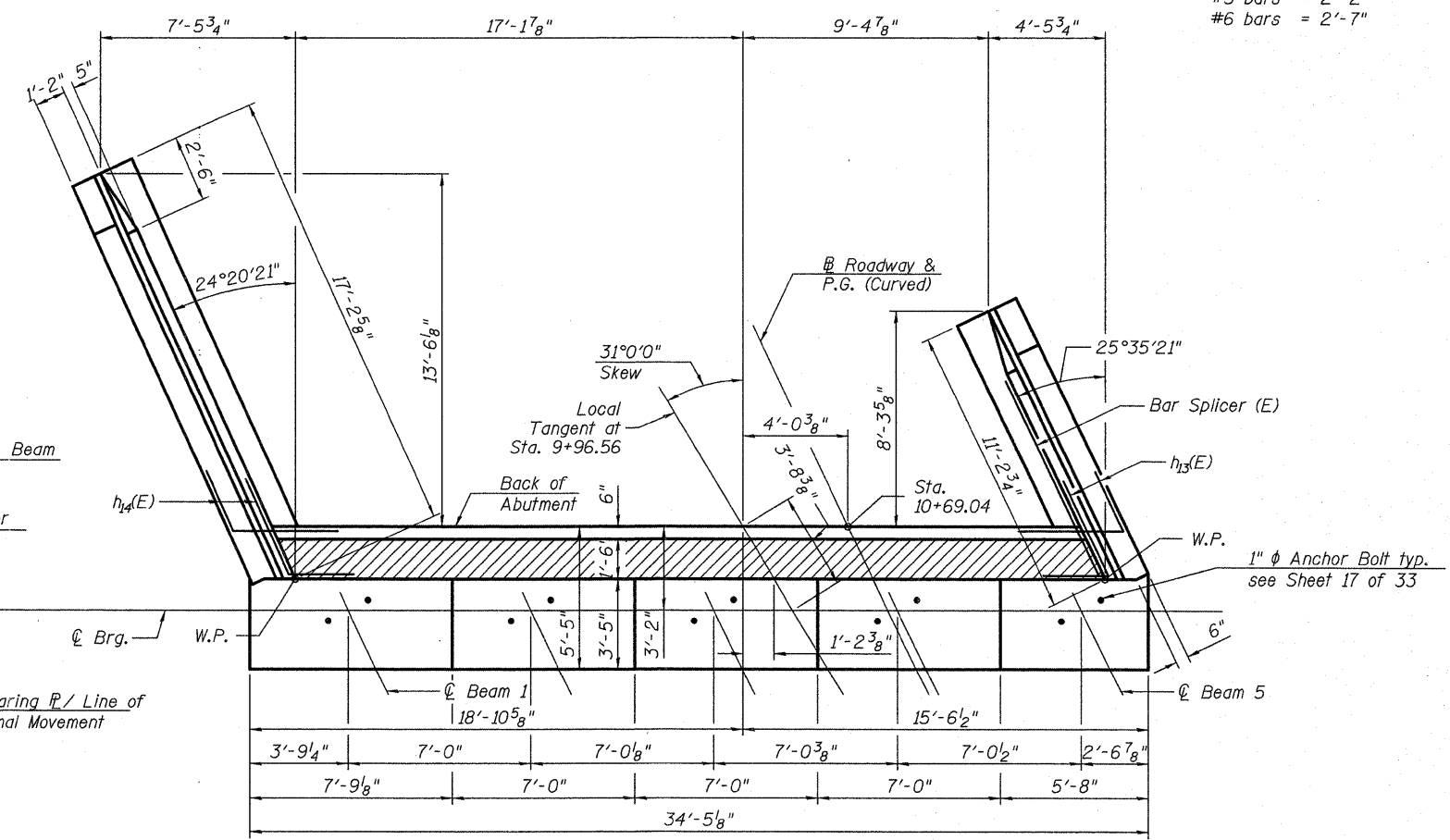
MIN BAR LAP
 #5 bars = 2'-2"
 #6 bars = 2'-7"

ANCHOR BOLT LAYOUT DIMENSIONS

	Beam 1	Beam 2	Beam 3	Beam 4	Beam 5
Angle A	1°56'	1°57'	1°58'	1°59'	2°1'
Angle B	27°4'	27°18'	27°33'	27°48'	28°3'
X	9 7/8"	9 7/8"	9 7/8"	9 7/8"	9"
Y	4 3/8"	4 3/4"	4 3/4"	4 3/4"	4 1/8"



ANCHOR BOLT LAYOUT



TOP VIEW

(Sheet 1 of 3)

PRINT DATE: 9/28/2011 11:58:54 AM Z:\08059 I-57 and I13 Interchange.dgn, B:rdgs, Final\PLT sheets\1000098-78182-022-East_Abutment.dgn

EFK Moen, LLC
Civil Engineering Design
 331 Salem Place, Suite 225
 Fairview Heights, IL, 62208
 Phone 618-206-4250

FILE NAME =	USER NAME = cdl	DESIGNED - CTW	REVISED -
1000098-78182-022-East_Abutment.dgn		CHECKED - CDL	REVISED -
		DRAWN - DP	REVISED -
		DATE - 9/28/2011	REVISED -

STATE OF ILLINOIS
 DEPARTMENT OF TRANSPORTATION

EAST ABUTMENT
STRUCTURE NO. 100-0098
 SHEET NO. 22 OF 33 SHEETS

F.A.I. RTE.	SECTION	COUNTY	TOTAL SHEETS	SHEET NO.
57	(X1-6-2)HB-2	WILLIAMSON	968	705
				CONTRACT NO. 78182
ILLINOIS FED. AID PROJECT				