

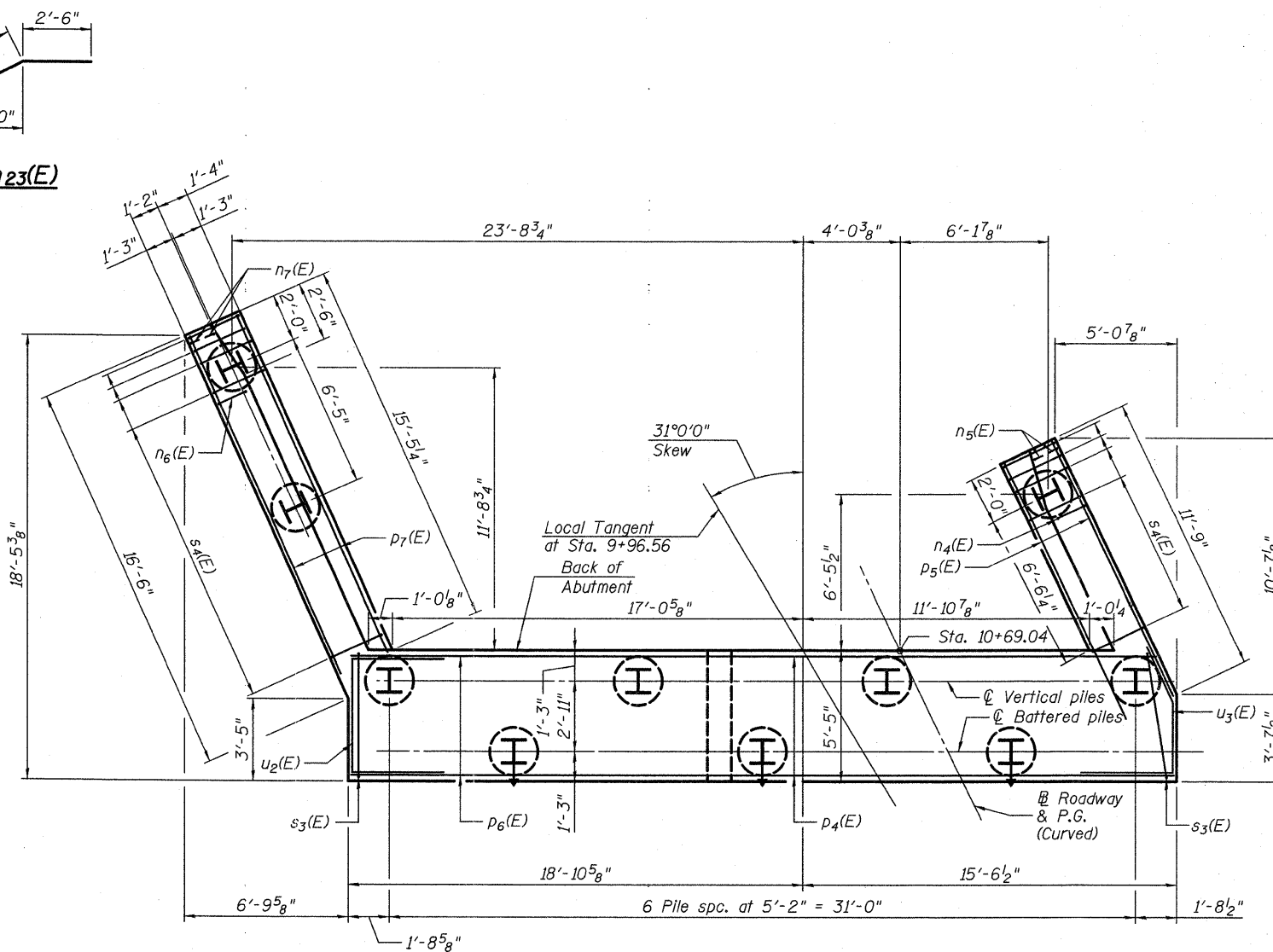
**EAST ABUTMENT
BILL OF MATERIAL**

Bar	No.	Size	Length	Shape
h13(E)	8	#5	30'-7"	—
h13(E)	10	#5	6'-6"	—
h14(E)	10	#5	6'-6"	—
h15(E)	11	#4	11'-5"	—
h16(E)	7	#4	10'-10"	—
h17(E)	5	#6	30'-7"	—
h18(E)	11	#4	16'-2"	—
h19(E)	7	#4	16'-7"	—
h20(E)	4	#5	28'-5"	—
h21(E)	4	#5	14'-5"	—
h22(E)	4	#5	7'-5"	—
h23(E)	4	#5	6'-5"	—
n4(E)	12	#6	14'-8"	—
n5(E)	6	#6	7'-4"	—
n6(E)	8	#6	12'-4"	—
n7(E)	6	#6	6'-2"	—
p4(E)	12	#8	18'-4"	—
p5(E)	6	#7	11'-7"	—
p6(E)	12	#8	21'-5"	—
p7(E)	6	#7	16'-4"	—
s3(E)	40	#6	17'-10"	—
s4(E)	26	#4	9'-5"	—
s5(E)	31	#4	11'-7"	—
u2(E)	5	#6	10'-3"	—
u3(E)	4	#6	10'-3"	—
v7(E)	31	#4	3'-9"	—
v8(E)	31	#4	3'-0"	—
v9(E)	29	#6	6'-7"	—
v10(E)	6	#6	6'-1"	—
v11(E)	23	#6	6'-10"	—
v12(E)	31	#5	4'-9"	—
v13(E)	31	#5	6'-1"	—
Structure Excavation	Cu. Yd.		96	
Concrete Structures	Cu. Yd.		50.7	
Reinforcement Bars, Epoxy Coated	Pound		6,030	
Furnishing Steel Piles HP12x53	Foot		342	
Driving Piles	Foot		342	
Pile Shoes	Each		10	
Test Pile Steel HP12x53	Each		1	
Concrete Encasement	Cu. Yd.		3.5	
Concrete Sealer	Sq. Ft.		263	

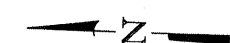
For details of Bar Splicers, see sheet 30 of 33.
For details of piles and Concrete Encasement, see sheet 29 of 33.

PILE DATA

Type: HP12x53 with Pile Shoes
Nominal Required Bearing: 418 kip
Factored Resistance Available: 230 kip
Est. Length: 38'
No. Production Piles: 9
No. Test Piles: 1



PLAN-PILE CAP



(Sheet 2 of 3)

**EAST ABUTMENT
STRUCTURE NO. 100-0098**

SHEET NO. 23 OF 33 SHEETS

F.A.I. RTE.	SECTION	COUNTY	TOTAL SHEETS	SHEET NO.
57	(X1-6-2)HB-2	WILLIAMSON	968	706
CONTRACT NO. 78182				

ILLINOIS FED. AID PROJECT

**STATE OF ILLINOIS
DEPARTMENT OF TRANSPORTATION**

PRINT DATE: 9/28/2011 11:37:24 AM Z:\10835 1-57 end ILL.D Interchange.dgn\B.dgn V:\Final\Projects\1080098-78182-823-East_Abutment.dgn

EFK Moen, LLC
Civil Engineering Design
331 Salem Place, Suite 225
Fairview Heights, IL 62208
Phone 618-206-4250

FILE NAME = 1080098-78182-823-East_Abutment.dgn	USER NAME = edl	DESIGNED - CTW	REvised -
PLOT SCALE = 0.10000 ' / IN.	DRAWN - DP	CHECKED - CDL	REvised -
PLOT DATE = 9/28/2011	DATE - 9/28/2011	DRAWN - DP	REvised -