

**STANDARD BAR SPLICER ASSEMBLY**

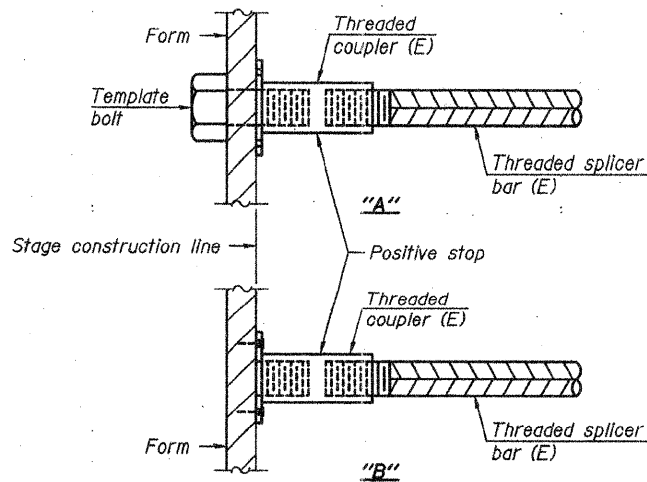
Minimum Lap Lengths					
Bar size to be spliced	Table 1	Table 2	Table 3	Table 4	Table 5
3, 4	1'-5"	1'-11"	2'-1"	2'-4"	2'-3"
5	1'-9"	2'-5"	2'-7"	2'-11"	2'-10"
6	2'-1"	2'-11"	3'-1"	3'-6"	3'-4"
7	2'-9"	3'-10"	4'-2"	4'-8"	4'-6"
8	3'-8"	5'-1"	5'-5"	6'-2"	5'-10"
9	4'-7"	6'-5"	6'-10"	7'-9"	7'-5"

- Table 1: Black bar, 0.8 Class C
- Table 2: Black bar, Top bar lap, 0.8 Class C
- Table 3: Epoxy bar, 0.8 Class C
- Table 4: Epoxy bar, Top bar lap, 0.8 Class C
- Table 5: Epoxy bar, Top bar lap, Class B

Threaded splicer bar length = min. lap length + 1/2" + thread length

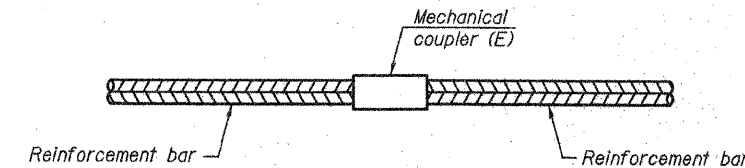
\* Epoxy not required on Bar Splicer Assembly components used in conjunction with black bars.

Location	Bar size	No. assemblies required	Table for minimum lap length



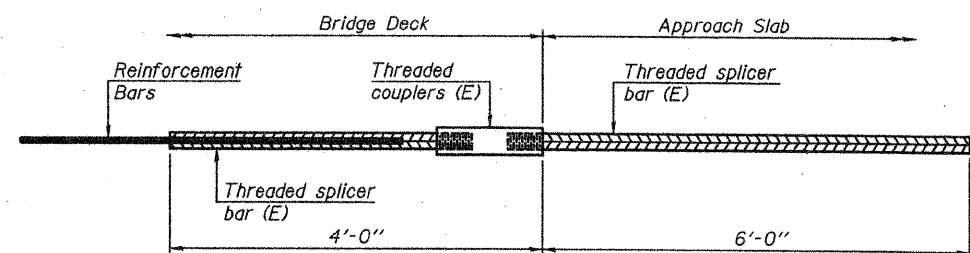
**INSTALLATION AND SETTING METHODS**

"A" : Set bar splicer assembly by means of a template bolt.  
 "B" : Set bar splicer assembly by nailing to wood forms or cementing to steel forms.  
 (E) : Indicates epoxy coating.



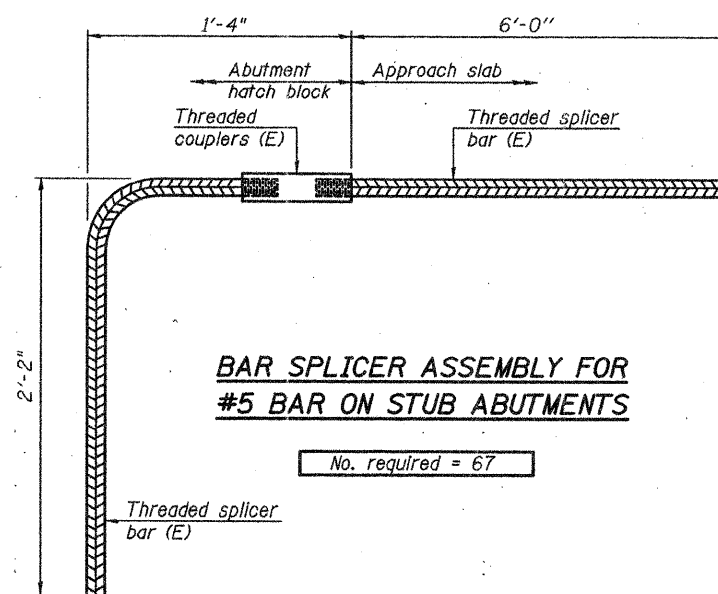
**STANDARD MECHANICAL SPLICER**

Location	Bar size	No. assemblies required
Pier 1 Column	#10	70
Pier 1 Column	#5	112
Pier 2 Column	#10	68
Pier 2 Column	#5	112



**BAR SPLICER ASSEMBLY FOR #5 BAR ON INTEGRAL OR SEMI-INTEGRAL ABUTMENTS**

No. required = 0



**BAR SPLICER ASSEMBLY FOR #5 BAR ON STUB ABUTMENTS**

No. required = 67

**NOTES**

Splicer bars shall be deformed with threaded ends and have a minimum 60 ksi yield strength.  
 All reinforcement shall be lapped and tied to the splicer bars.  
 Bar splicer assemblies shall be epoxy coated according to the requirements for reinforcement bars. See Section 508 of the Standard Specifications.  
 See approved list of bar splicer assemblies and mechanical splicers for alternatives.

z:\100935-97 and 113 interschange.dgn\bridge\final\plotsheets\100935-78182-030-Bar\_Splicer.dgn  
 2/16/10 2:57 PM  
 PRINT DATE: 9/7/2011

**EFK Moen, LLC**  
 Civil Engineering Design  
 331 Salem Place, Suite 225  
 Fairview Heights, IL 62208  
 Phone 618-206-4250  
**BSD-1**

7-1-10

FILE NAME = 100935-78182-030-Bar_Splicer.dgn	USER NAME = ja	DESIGNED - CTW	REVISIONS -	<b>STATE OF ILLINOIS DEPARTMENT OF TRANSPORTATION</b>	<b>BAR SPLICER ASSEMBLY AND MECHANICAL SPLICER DETAILS STRUCTURE NO. 100-0098</b>	F.A.I. RTE. = 57	SECTION = (X1-6-2)HB-2	COUNTY = WILLIAMSON	TOTAL SHEETS = 968	SHEET NO. = 713	
PLOT SCALE = 0.10000 1' / IN.	DRAWN - DP	DATE - 9/7/2011	REVISIONS -			SHEET NO. 30 OF 33 SHEETS					
PLOT DATE = 9/7/2011						CONTRACT NO. 78182					
						ILLINOIS FED. AID PROJECT					