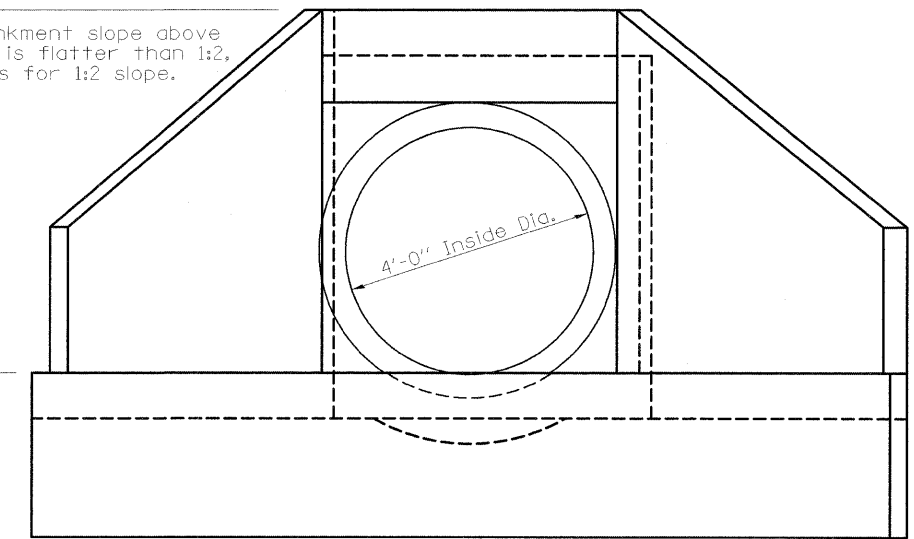


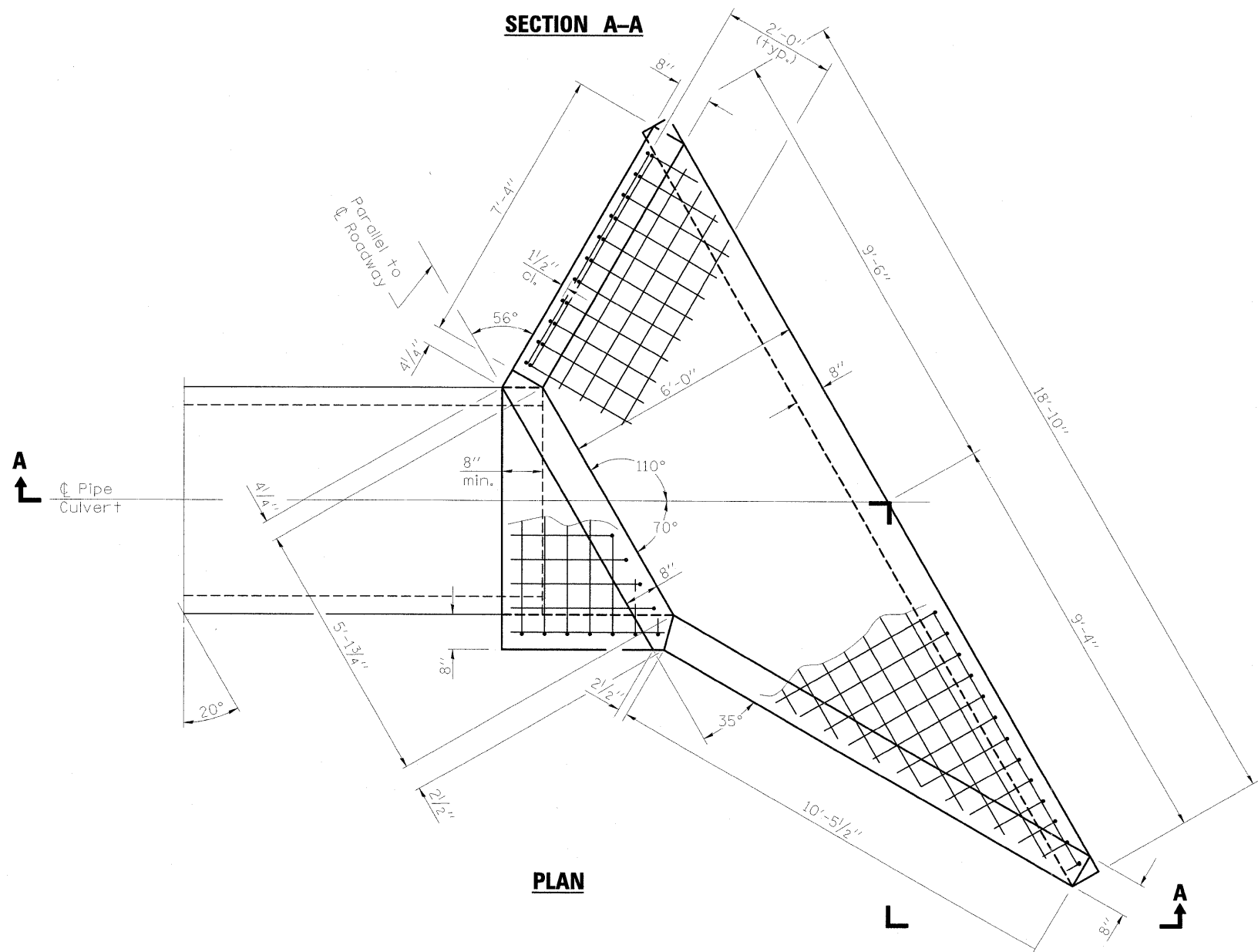
Welded wire fabric (typ.)  
6x6 - W4.0xW4.0  
(152x152 - MW25.8xMW25.8)

\*If the embankment slope above the headwall is flatter than 1:2, provide wings for 1:2 slope.



**END VIEW**

**SECTION A-A**



**PLAN**

**BILL OF MATERIAL (1 END SECTION)**

ITEM	UNIT	TOTAL
Concrete Structures	Cu. Yd.	5.5
Welded Wire Fabric, 6 x 6	Sq. Yd.	38

**GENERAL NOTES**

Build tops of headwalls parallel to grade line.

When lapping sheets of welded wire fabric, the overlap measured between the outermost cross wires of each fabric sheet shall not be less than 8 (200).

All slope ratios are expressed as units of vertical displacement to units of horizontal displacement (V:H).

All dimensions are in inches (millimeters) unless otherwise shown.

FILE NAME = ...ND978182-sh1-DET006-48HEADWALL.dgn	USER NAME = Rob Heady	DESIGNED -	REVISED -
PLOT SCALE = 1.0000' / IN.	CHECKED -	REVISED -	REVISED -
PLOT DATE = 10/7/2011	DATE = 10/07/11	REVISED -	REVISED -

**STATE OF ILLINOIS  
DEPARTMENT OF TRANSPORTATION**

**DETAIL - 48" CONCRETE END SECTION  
I-57 AND IL ROUTE 13**

SCALE: N.T.S. SHEET NO. OF SHEETS STA. TO STA.

F.A. RTE.	SECTION	COUNTY	TOTAL SHEETS	SHEET NO.
* I-57	IX-1R-1	WILLIAMSON	968	732
* F.A.I. 57 AND F.A.P. 331			CONTRACT NO. 78182	
ILLINOIS FED. AID PROJECT				