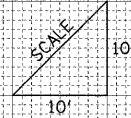
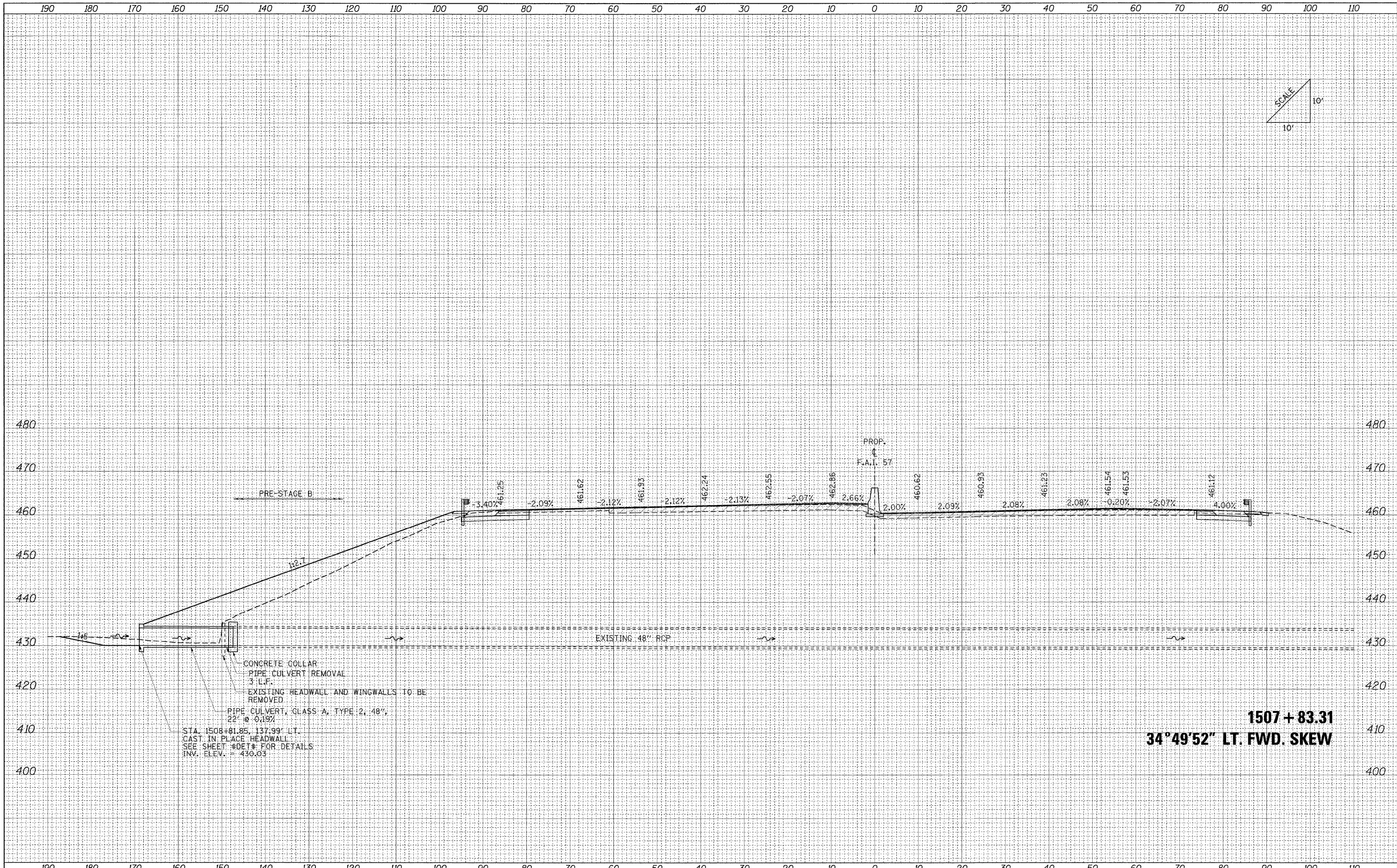


DATE	
BY	
DESIGNED	
DRAWN	
CHECKED	
DATE	

DATE	
BY	
DESIGNED	
DRAWN	
CHECKED	
DATE	



CONCRETE COLLAR
 PIPE CULVERT REMOVAL
 3' L.F.
 EXISTING HEADWALL AND WINGWALLS TO BE
 REMOVED
 PIPE CULVERT, GLASS A, TYPE 2, 48",
 22' @ 0.19%
 STA. 1508+81.85, 137.99' LT.
 CAST IN PLACE HEADWALL
 SEE SHEET #DET# FOR DETAILS
 INV. ELEV. = 430.03

1507 + 83.31
34°49'52" LT. FWD. SKEW

FILE NAME = ... \D978182-shc-XCS-CULVERT PROFILES.157.dgn	USER NAME = Rob Heady	DESIGNED - MJO	REVISÉ -	STATE OF ILLINOIS DEPARTMENT OF TRANSPORTATION	CULVERT PROFILES: F.A.I. 57	F.A. RTE.	SECTION	COUNTY	TOTAL SHEETS	SHEET NO.
	PLOT SCALE = 10,0000' / IN.	DRAWN - MJO	REVISÉ -			* (X1-6-2)HBK-2, HB-1,2; (IX-1R-1	WILLIAMSON	968	744	
	PLOT DATE = 10/7/2011	CHECKED - BJD	REVISÉ -			* F.A.I. 57 AND F.A.P. 331			CONTRACT NO. 78182	
		DATE - 10/07/11	REVISÉ -			FED. ROAD DIST. NO.	ILLINOIS FED. AID PROJECT			