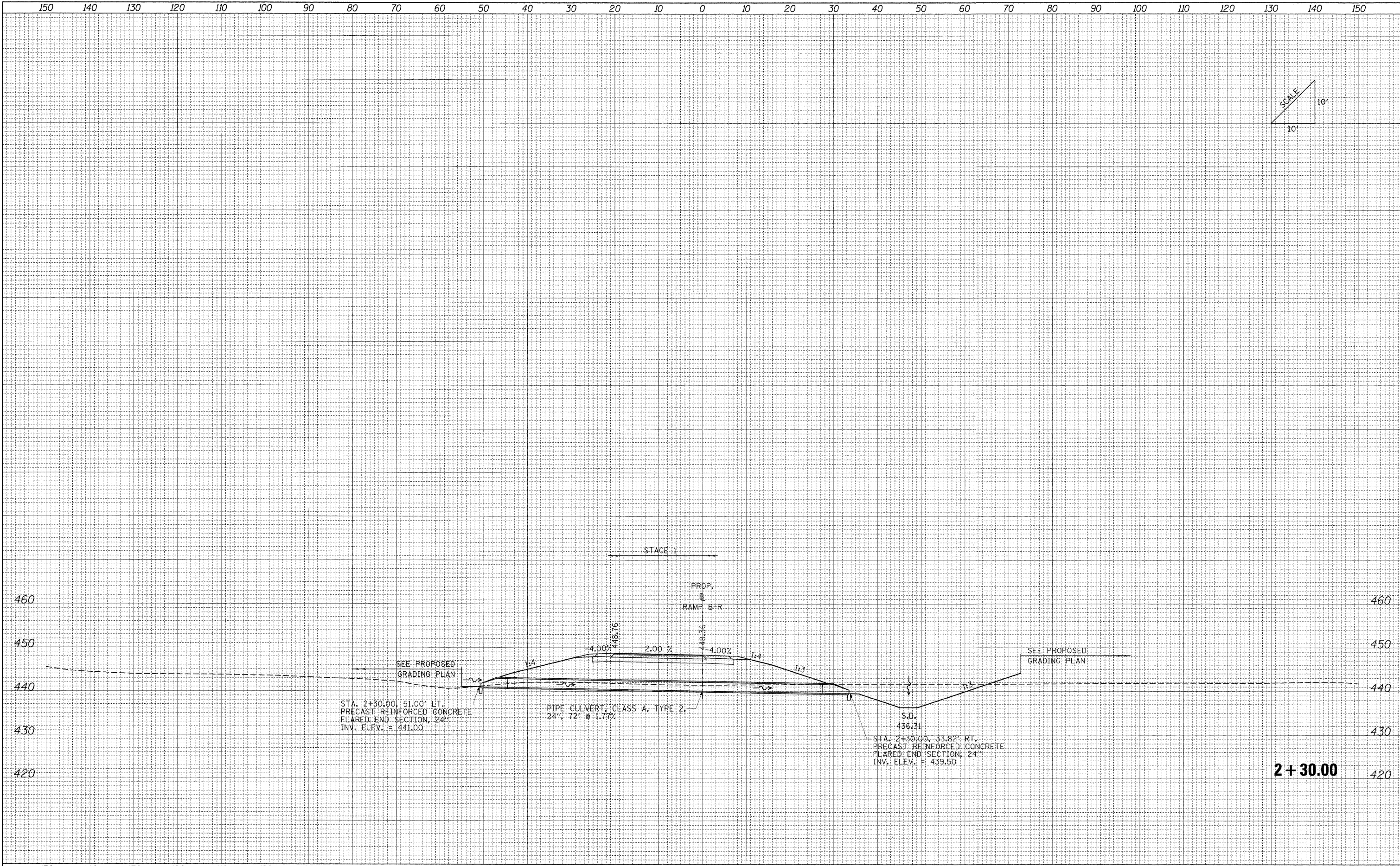
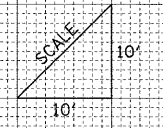


FINAL SURVEY	DATE
SURVEYED	BY
NOTE BOOK	NO.
TEMPLATE	AREAS CHECKED

ORIGINAL SURVEY	DATE
SURVEYED	BY
NOTE BOOK	NO.
TEMPLATE	AREAS CHECKED



STA. 2+30.00, 51.00' LT.
 PRECAST REINFORCED CONCRETE
 FLARED END SECTION, 24"
 INV. ELEV. = 441.00

PIPE CULVERT, CLASS A, TYPE 2,
 24", 72' @ 1.77%

STA. 2+30.00, 33.82' RT.
 PRECAST REINFORCED CONCRETE
 FLARED END SECTION, 24"
 INV. ELEV. = 439.50

**STATE OF ILLINOIS
 DEPARTMENT OF TRANSPORTATION**

CULVERT PROFILES: RAMP B-R

FILE NAME =	USER NAME = Rob Heady	DESIGNED - MJO	REVISED -	SCALE: SHEET NO. OF SHEETS STA. 2+30.00 TO STA. 2+30.00	F.A. RTE. SECTION COUNTY TOTAL SHEETS SHEET NO. * (X1-6-2)HBK-2, HB-1,2; (1X-1)R-1 WILLIAMSON 968 752 * F.A.I. 57 AND F.A.P. 331 CONTRACT NO. 78182 FED. ROAD DIST. NO. ILLINOIS FED. AID PROJECT
...\\D979182-shr-XCS_CULVERT_PROFILES_RAMPB1.dgn		DRAWN - MJO	REVISED -		
PLOT SCALE = 10.0000' / IN.		CHECKED - BJD	REVISED -		
PLOT DATE = 10/7/2011		DATE - 10/07/11	REVISED -		