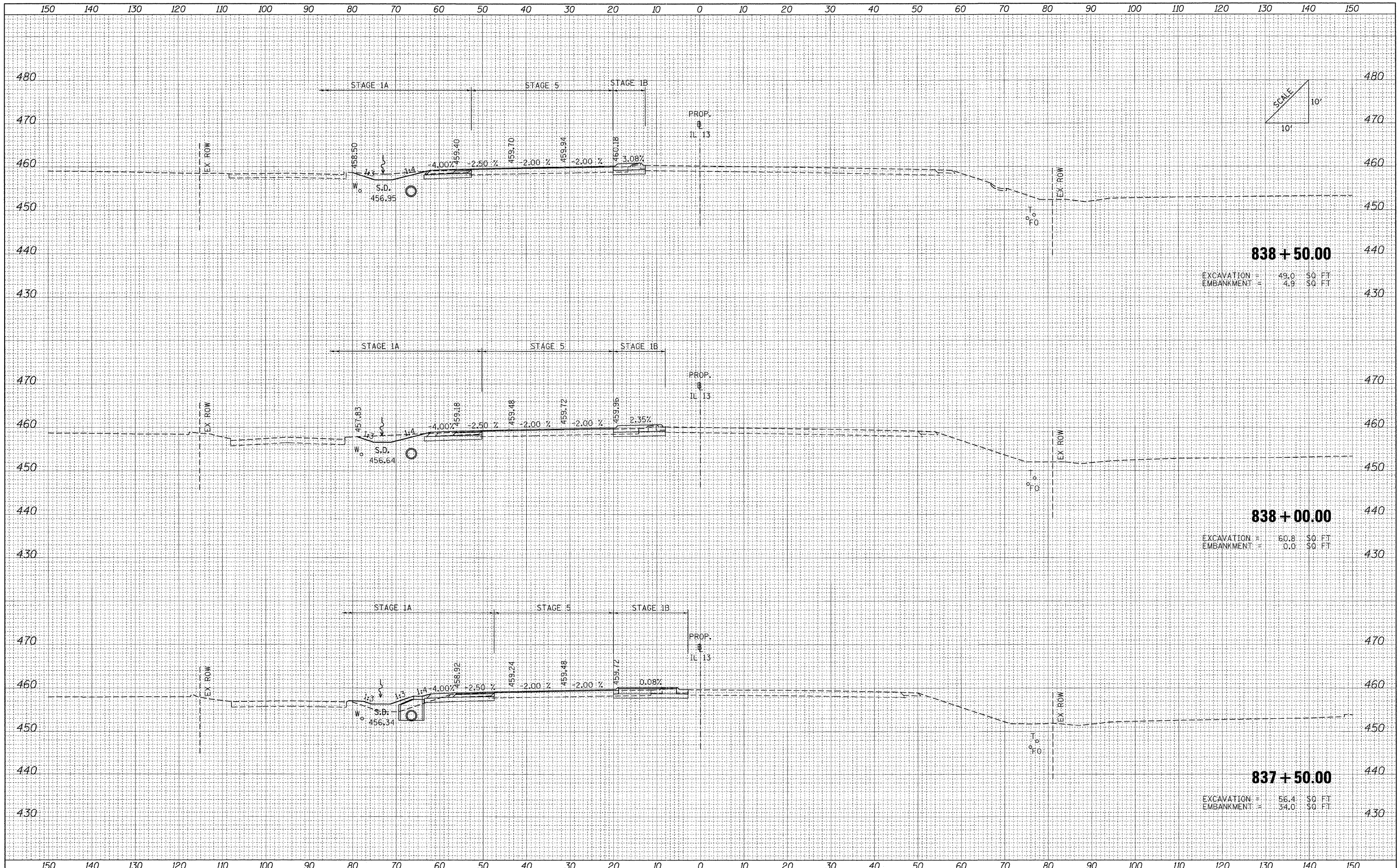


DATE	
BY	
FINAL SURVEY	SURVEYED
NOTE BOOK	PLOTTED
NO.	REVISION
	TEMPLATE
	AREAS CHECKED

DATE	
BY	
ORIGINAL SURVEY	SURVEYED
NOTE BOOK	PLOTTED
NO.	REVISION
	TEMPLATE
	AREAS CHECKED



FILE NAME = ...\\0978182-sht-XCS\_IL13.dgn

USER NAME = Rob Heady	DESIGNED - MJO	REVISED -
	DRAWN - MJO	REVISED -
PLOT SCALE = 10.0000' / IN.	CHECKED - BJD	REVISED -
PLOT DATE = 10/11/2011	DATE - 10/07/11	REVISED -

**STATE OF ILLINOIS  
DEPARTMENT OF TRANSPORTATION**

**CROSS SECTIONS: F.A.P 331 (IL 13)**

SCALE: SHEET NO. OF SHEETS STA. 837+50.00 TO STA. 838+50.00

F.A. RTE.	SECTION	COUNTY	TOTAL SHEETS	SHEET NO.
*	(X1-6-2)HBK-2, HB-1,2; (1X-1)R-1	WILLIAMSON	968	872
*	F.A.I. 57 AND F.A.P. 331	CONTRACT NO. 78182		
FED. ROAD DIST. NO. ILLINOIS FED. AID PROJECT				