

STATE OF ILLINOIS
DEPARTMENT OF TRANSPORTATION
DIVISION OF HIGHWAYS

PLANS FOR PROPOSED FEDERAL AID PROJECT HIGHWAY BRIDGE PROGRAM

FAS ROUTE 63 (N KENT ROAD)
SECTION 10-00177-00-BR
PROJECT BRS-0063 (106)
STRUCTURE REPLACEMENT
STEPHENSON COUNTY

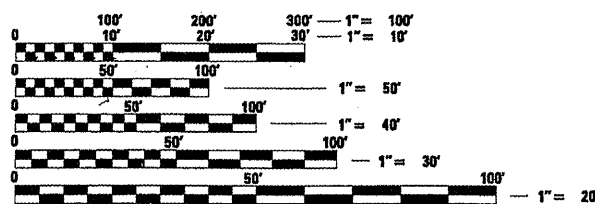
C-92-037-12

INDEX OF SHEETS

- 1 = COVER SHEET
- 2 = SUMMARY OF QUANTITIES
- 3-4 = GENERAL NOTES AND SCHEDULES OF QUANTITIES
- 5 = TYPICAL SECTIONS
- 6 = PLAN AND PROFILE
- 7 = TRAFFIC CONTROL PLAN
- 8 = EROSION CONTROL PLAN
- 9 = STORM WATER POLLUTION PREVENTION PLAN
- 10 = TRIPLE BARREL BOX CULVERT DETAILS
- 11 = SOIL BORINGS
- 12-15 = CROSS SECTIONS

STANDARDS

- 000001-06 STANDARD SYMBOLS, ABBREVIATIONS, AND PATTERNS
- 280001-06 TEMPORARY EROSION CONTROL SYSTEMS
- 515001-03 NAME PLATES FOR BRIDGES
- 665001-02 WOVEN WIRE FENCE
- 701006-03 OFF-RD OPERATIONS, 2L, 2W, 15' TO 24" FROM PAVEMENT EDGE
- 701201-04 LANE CLOSURE, 2L, 2W, DAY ONLY, FOR SPEEDS > 45 M.P.H.
- 701301-04 LANE CLOSURE, 2L, 2W, SHORT TIME OPERATIONS
- 701901-02 TRAFFIC CONTROL DEVICES
- 720011-01 METAL POSTS FOR SIGNS, MARKERS, AND DELINEATORS
- 728001-01 TELESCOPING STEEL SIGN SUPPORT
- 729001-01 APPLICATIONS OF TYPE A & B METAL POSTS (FOR SIGNS & MARKERS)
- B.L.R. 21-9 TYPICAL APPLICATION OF TRAFFIC CONTROL DEVICES FOR CONSTRUCTION ON RURAL LOCAL HIGHWAYS
- B.L.R. 22-7 TYPICAL APPLICATION OF TRAFFIC CONTROL DEVICES FOR CONSTRUCTION ON RURAL LOCAL HIGHWAYS



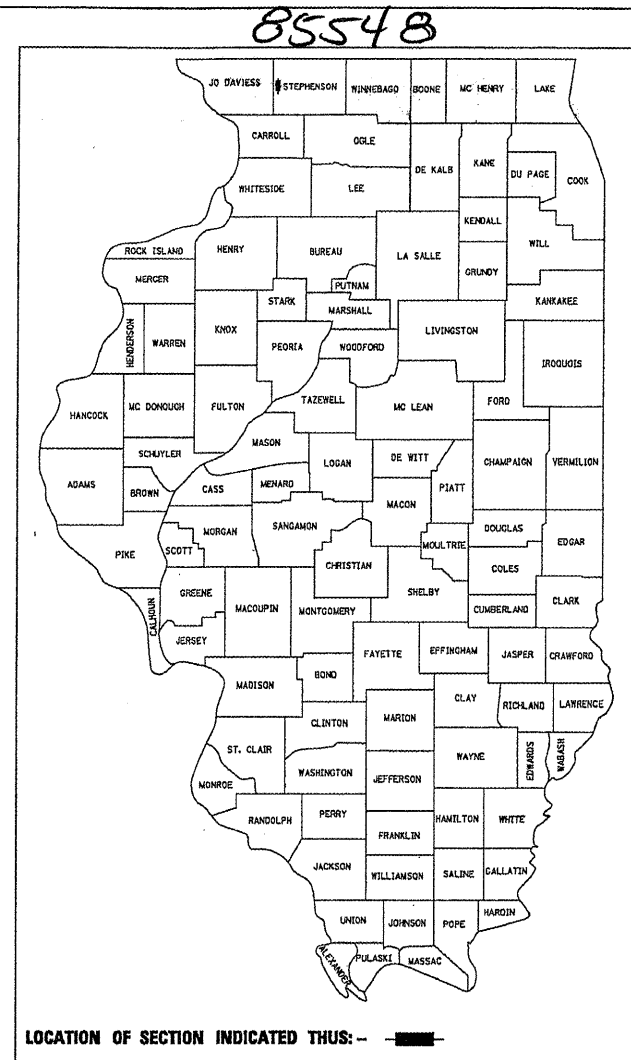
FULL SIZE PLANS HAVE BEEN PREPARED USING STANDARD ENGINEERING SCALES. REDUCED SIZED PLANS WILL NOT CONFORM TO STANDARD SCALES. IN MAKING MEASUREMENTS ON REDUCED PLANS, THE ABOVE SCALES MAY BE USED.

J.U.L.I.E.
JOINT UTILITY LOCATION INFORMATION FOR EXCAVATION
1-800-892-0123
OR 811

HIGHWAY CLASSIFICATION: MAJOR COLLECTOR (NON-URBAN)
DESIGN SPEED: 40 M.P.H.
ADT = 332; 2% Trucks
POLICY: NEW CONSTRUCTION/RECONSTRUCTION

GROSS LENGTH = 500 FT. = 0.095 MILES
NET LENGTH = 500 FT. = 0.095 MILES

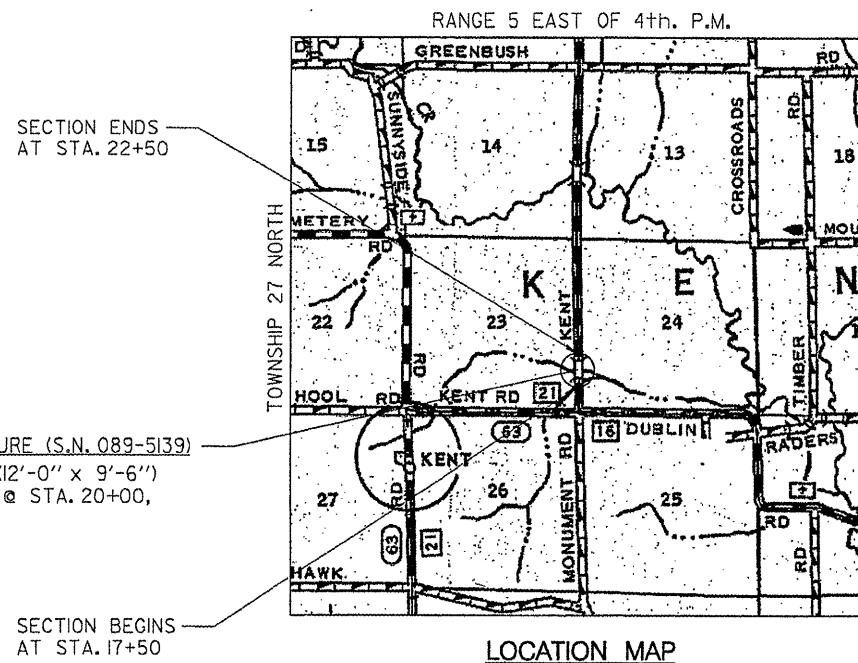
CONTRACT NO. 85548



UTILITIES:

VERIZON (FRONTIER COM.)
112 ELM STREET
SYCAMORE, IL 60178
PH: 815-895-1538
ATTN: GARRETT BURT

COM ED
1910 S. BRIGGS ST.
JOLIET, IL 60433-9599
PH: 630-437-3313
ATTN: CRAIG WEBER



PROPOSED STRUCTURE (S.N. 089-5139)
A TRIPLE BARREL (12'-0" x 9'-6")
R.C. BOX CULVERT @ STA. 20+00,
SKEWED 0°



Brian K. Converse
DATE: 11-2-2011
EXPIRES 11/30/13

STEPHENSON COUNTY HIGHWAY DEPARTMENT	
APPROVED	10-31 <i>Chris F. [Signature]</i> STEPHENSON COUNTY ENGINEER
PASSED	Nov. 7 2011 <i>[Signature]</i> DISTRICT 2 ENGINEER OF LOCAL ROADS & STREETS
RELEASING FOR BID BASED ON LIMITED REVIEW	Nov. 7 2011 <i>[Signature]</i> DEPUTY DIRECTOR OF HIGHWAYS, REGION 2 ENGINEER
STATE OF ILLINOIS DEPARTMENT OF TRANSPORTATION	

WILLETT HOFMANN & ASSOCIATES INC.
ENGINEERING ARCHITECTURE LAND SURVEYING

809 EAST 2ND STREET, DIXON, IL 61021-0367
T: 815-284-3381 DESIGN FIRM: #184-000918
WHA #1119D10

FILE = S:\PROJECTS\2010\11\1010_Sypherson_Co_N_Kent_Rd\DESIGN\STRUCT\Cover.ctb.dgn