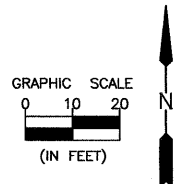
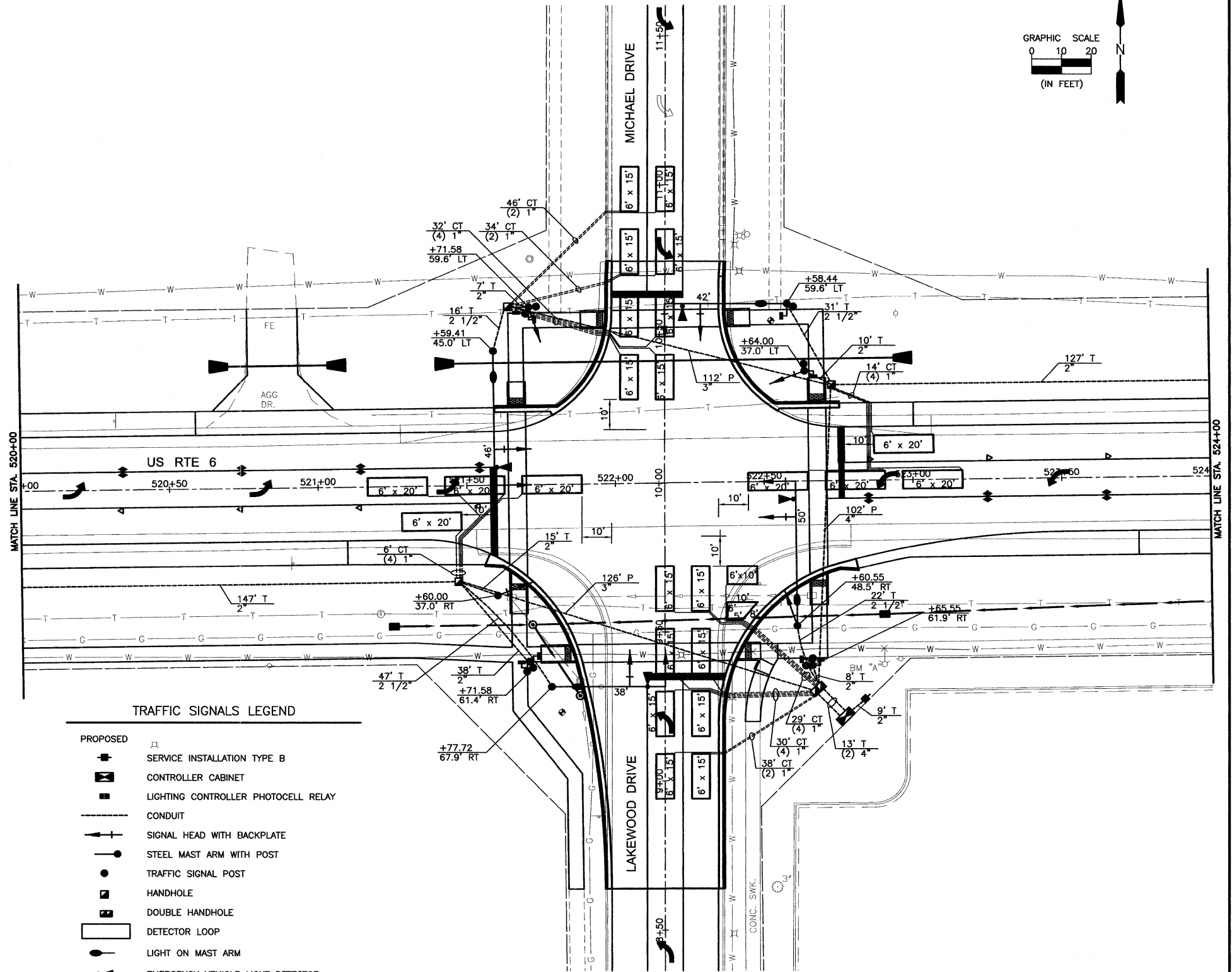


**SCHEDULE OF QUANTITIES**

ITEM NO.	DESCRIPTION	UNIT	TOTAL QUANTITY
20200200	ROCK EXCAVATION	CU YD	6
70106800	CHANGEABLE MESSAGE SIGN	CAL MO	3
72000100	SIGN PANEL - TYPE 1	SQ FT	20
72000200	SIGN PANEL - TYPE 2	SQ FT	115
80500200	SERVICE INSTALLATION, TYPE B	EACH	1
81028320	UNDERGROUND CONDUIT, PVC, 1" DIA.	FOOT	680
81028350	UNDERGROUND CONDUIT, PVC, 2" DIA.	FOOT	361
81028360	UNDERGROUND CONDUIT, PVC, 2 1/2" DIA.	FOOT	116
81028370	UNDERGROUND CONDUIT, PVC, 3" DIA.	FOOT	238
81028390	UNDERGROUND CONDUIT, PVC, 4" DIA.	FOOT	128
81400700	HANDHOLE, PORTLAND CEMENT CONCRETE	EACH	3
81400720	DOUBLE HANDHOLE, PORTLAND CEMENT CONCRETE	EACH	1
81702110	ELECTRIC CABLE IN CONDUIT, 600V (XLP-TYPE USE) 1/C NO. 10	FOOT	2172
82102250	LUMINAIRE, SODIUM VAPOR, HORIZONTAL MOUNT, 250 WATT	EACH	4
85700205	FULL-ACTUATED CONTROLLER AND TYPE IV CABINET, SPECIAL	EACH	1
85800300	FLASHER CONTROLLER, WITHOUT CABINET	EACH	1
86200300	UNINTERRUPTIBLE POWER SUPPLY, EXTENDED	EACH	1
87301215	ELECTRIC CABLE IN CONDUIT, SIGNAL NO. 14 2C	FOOT	1778
87301225	ELECTRIC CABLE IN CONDUIT, SIGNAL NO. 14 3C	FOOT	1467
87301245	ELECTRIC CABLE IN CONDUIT, SIGNAL NO. 14 5C	FOOT	947
87301255	ELECTRIC CABLE IN CONDUIT, SIGNAL NO. 14 7C	FOOT	1716
87301305	ELECTRIC CABLE IN CONDUIT, LEAD-IN, NO. 14 1 PAIR	FOOT	2385
87301705	ELECTRIC CABLE IN CONDUIT, COMMUNICATION NO. 18 3 PAIR	FOOT	963
87301805	ELECTRIC CABLE IN CONDUIT, SERVICE, NO. 6 2 C	FOOT	15
87301900	ELECTRIC CABLE IN CONDUIT, EQUIPMENT GROUNDING CONDUCTOR, NO. 6 1C	FOOT	898
87502460	TRAFFIC SIGNAL POST, GALVANIZED STEEL 12 FT.	EACH	2
87502500	TRAFFIC SIGNAL POST, GALVANIZED STEEL 16 FT.	EACH	3
87702920	STEEL COMBINATION MAST ARM ASSEMBLY AND POLE 38 FT.	EACH	1
87702940	STEEL COMBINATION MAST ARM ASSEMBLY AND POLE 42 FT.	EACH	1
87702960	STEEL COMBINATION MAST ARM ASSEMBLY AND POLE 46 FT.	EACH	1
87702980	STEEL COMBINATION MAST ARM ASSEMBLY AND POLE 50 FT.	EACH	1
87800100	CONCRETE FOUNDATION, TYPE A	FOOT	15
87800150	CONCRETE FOUNDATION, TYPE C	FOOT	3.5
87800415	CONCRETE FOUNDATION, TYPE E 36-INCH DIAMETER	FOOT	52
88040090	SIGNAL HEAD, POLYCARBONATE, LED, 1-FACE, 3-SECTION, MAST ARM MOUNTED	EACH	4
88040150	SIGNAL HEAD, POLYCARBONATE, LED, 1-FACE, 5-SECTION, BRACKET MOUNTED	EACH	4
88040160	SIGNAL HEAD, POLYCARBONATE, LED, 1-FACE, 5-SECTION, MAST ARM MOUNTED	EACH	4
88102825	PEDESTRIAN SIGNAL HEAD, POLYCARBONATE, LED, 1-FACE, BRACKET MOUNTED WITH COUNT DOWN TIMER	EACH	8
88200410	TRAFFIC SIGNAL BACKPLATE, LOUVERED, FORMED PLASTIC	EACH	12
88500100	INDUCTIVE LOOP DETECTOR	EACH	15
88600100	DETECTOR LOOP, TYPE I	FOOT	1671
88700200	LIGHT DETECTOR	EACH	4
88700300	LIGHT DETECTOR AMPLIFIER	EACH	1
88800100	PEDESTRIAN PUSH-BUTTON	EACH	8
X8250210	PHOTOCELL RELAY	EACH	1

NOTE: LOCATIONS OF TRAFFIC SIGNAL POSTS AND MAST ARM ASSEMBLIES MAY BE CHANGED IN THE FIELD AS NECESSARY TO AVOID UTILITIES. THE NEW LOCATIONS SHALL BE COORDINATED WITH THE ENGINEER AND APPROVED BY THE DISTRICT TRAFFIC SIGNAL SECTION TO ENSURE THE NEW LOCATIONS MEET OPERATIONAL OFFSET/CLEAR ZONE REQUIREMENTS AND MAINTAIN PROPER POSITION OF SIGNAL HEADS IN RELATION TO THE TRAVELED LANES.

CONDUITS INDICATED AS IN TRENCH MAY ALSO BE PLOWED, BORED OR PULLED AT THE CONTRACTORS OPTION.



- TRAFFIC SIGNALS LEGEND**
- PROPOSED
  - SERVICE INSTALLATION TYPE B
  - ▣ CONTROLLER CABINET
  - ▣ LIGHTING CONTROLLER PHOTOCELL RELAY
  - CONDUIT
  - ↑ SIGNAL HEAD WITH BACKPLATE
  - STEEL MAST ARM WITH POST
  - TRAFFIC SIGNAL POST
  - HANDHOLE
  - DOUBLE HANDHOLE
  - DETECTOR LOOP
  - LIGHT ON MAST ARM
  - ▲ EMERGENCY VEHICLE LIGHT DETECTOR
  - 100' T / 2" T--INDICATES CONDUIT IN TRENCH
  - 100' P / 2" P--INDICATES CONDUIT PUSHED
  - 100' CT / (2) 2" CT--INDICATES CONDUIT IN COMMON TRENCH (2) INDICATES # OF CONDUITS

CHAMLIN & ASSOCIATES, INC. © 2010 Drawing Name: G:\Users\G.Morris\Documents\10-00083-00-TS-PLAN.dwg Last Modified: Oct 14, 2011 9:46am Plotted on: Oct 14, 2011 9:55am by nancie

DRAWN BY: CHAMS	REVISIONS		
CHECKED BY: JKC	LEVEL	BY	DATE
DATE: 10/11			

**CHAMLIN & ASSOCIATES**  
PERU MORRIS ILLINOIS

FAU 5952 (US 6)  
SECTION 10-00083-00-TL  
CITY OF MORRIS  
GRUNDY COUNTY

TRAFFIC SIGNAL PLAN

**CONSTRUCTION PLANS**

CONTRACT NO. 87486	
CURRENT AS OF: 10/11	
SCALE: AS NOTED	SHEET 32
FILE NO.: 6969.00 Y-	OF 70