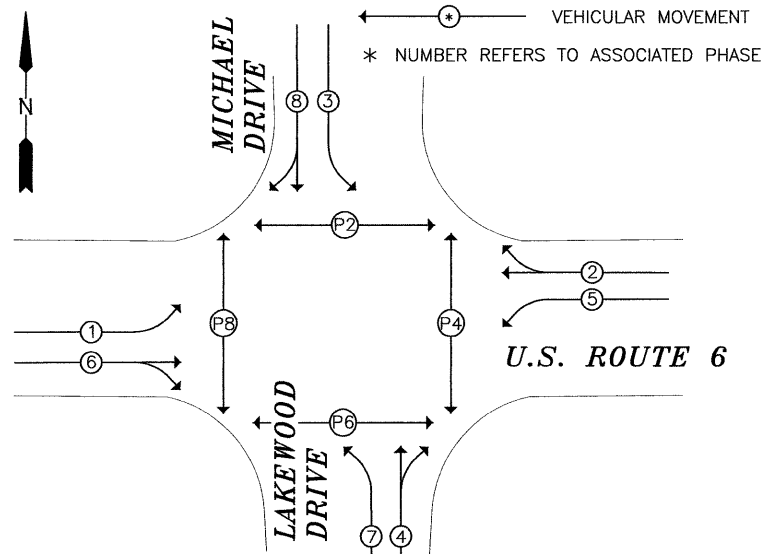


CONTROLLER SEQUENCE

NAME OF INTERSECTION: US ROUTE 6, LAKEWOOD DRIVE, AND MICHAEL DRIVE
 CONTROLLER SPECIFIED: FULL-ACTUATED CONTROLLER, STANDARD SEQUENCE II, 8 PHASE, IN TYPE IV CABINET
 REFERRING TO STANDARD 857001, THE VEHICULAR AND PEDESTRIAN PHASES USED ARE DESIGNATED.

LEGEND

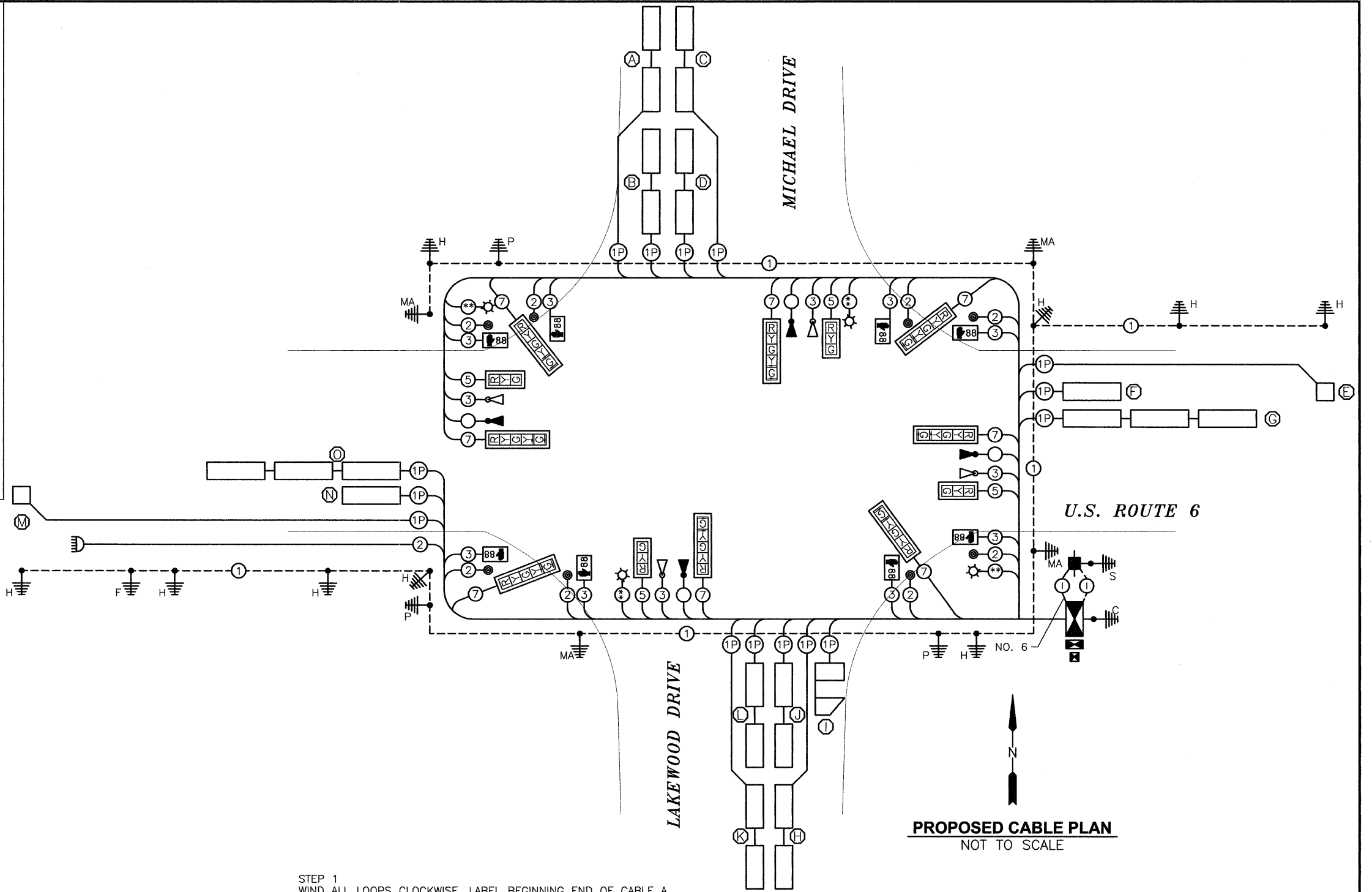


PHASE DESIGNATION DIAGRAM

NOT TO SCALE

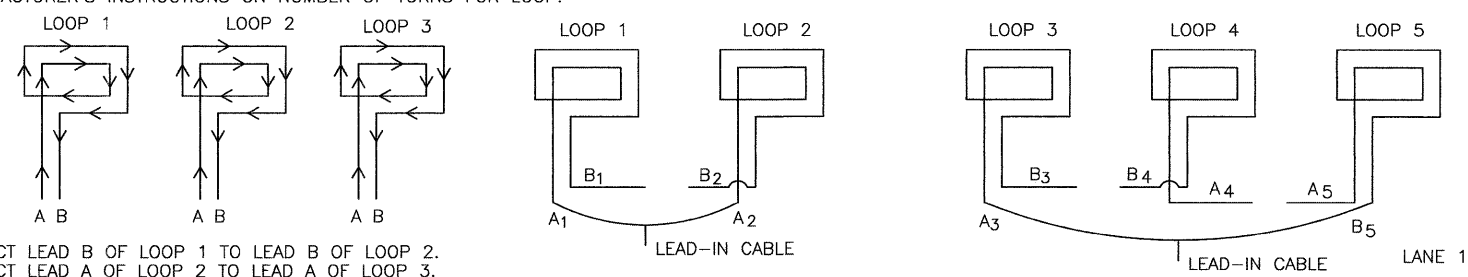
TRAFFIC SIGNALS LEGEND

- (*) DENOTES NUMBER OF CONDUCTORS (NEW) ALL CABLE NO. 14 EXCEPT AS INDICATED
- (+P) DENOTES NUMBER OF PAIR OF WIRE (NEW) ALL LOOP DETECTOR CABLE TO BE TWISTED, SHIELDED ALL CABLE NO. 14 EXCEPT AS INDICATED
- (*) DENOTES PROPOSED DETECTOR LOOP SYSTEM
- (***) DENOTES 3-1 CONDUCTOR, NO. 10 CABLE 600 (XLP-TYPE USE)
- ☁ PROPOSED FLASHER BEACON
- PEDESTRIAN PUSH BUTTON
- ⚡ EMERGENCY VEHICLE CONFIRMATION BEACON
- ⚡ EMERGENCY VEHICLE LIGHT DETECTOR
- ⊠ LEFT TURN YELLOW
- ⊠ LEFT TURN GREEN
- ⊠ SIGNAL SECTION 12"
- ⬇️ WALK/DON'T WALK COUNTDOWN SECTION
- ⊠ TRAFFIC SIGNAL BACKPLATE
- ⚙️ PROPOSED LUMINAIRE, HPS, 250 WATT
- ⚡ PROPOSED SERVICE INSTALLATION, TYPE B
- ⊠ PROPOSED FLASHER CONTROLLER
- ⊠ PROPOSED LIGHTING CONTROLLER PHOTOCELL RELAY
- ⊠ PROPOSED CONTROLLER CABINET
- ⊠ PROPOSED VEHICLE DETECTOR, INDUCTION LOOP
- ① GROUND CABLE IN CONDUIT, NO. 6 SOLID COPPER (GREEN)
- ⚡ GROUND ROD AT CONTROLLER (C), FLASHER POST (P), MAST ARM (MA), OR SERVICE (S)



PROPOSED CABLE PLAN
NOT TO SCALE

STEP 1
 WIND ALL LOOPS CLOCKWISE. LABEL BEGINNING END OF CABLE A. LABEL ENDING END OF CABLE B. FOLLOW DETECTOR LOOP CABLE MANUFACTURER'S INSTRUCTIONS ON NUMBER OF TURNS FOR LOOP.



STEP 2
 CONNECT LEAD B OF LOOP 1 TO LEAD B OF LOOP 2. CONNECT LEAD A OF LOOP 2 TO LEAD A OF LOOP 3.

DETECTOR LOOP WINDING AND SERIES SPLICING DETAIL
 (SEE DETECTOR LOOP INDUCTANCE CHART FOR NUMBER OF TURNS)

CHAMLIN & ASSOCIATES, INC. © 2010
 Drawing Name: C:\Users\jvc\Documents\Projects\10-00083-00-TL\CABLE.dwg Last Modified: Sep 22, 2011 9:52am Plotted on: Oct 14, 2011 9:56am by: jvc

DRAWN BY: CHAMS	REVISIONS			
	LEVEL	BY	DATE	DESCRIPTION
CHECKED BY: JKC				
DATE: 10/11				

CHAMLIN & ASSOCIATES
 PERU MORRIS ILLINOIS

FAU 5952 (US 6)
 SECTION 10-00083-00-TL
 CITY OF MORRIS
 GRUNDY COUNTY

TRAFFIC SIGNAL CABLE DETAILS

CONSTRUCTION PLANS

CONTRACT NO. 87486	
CURRENT AS OF: 10/11	
SCALE: AS NOTED	SHEET 34
FILE NO.: 6969.00 Y-	OF 70