

DETECTOR LOOP INDUCTANCE CHART					
DETECTOR LOOP SYSTEM	LOCATIONS	TURNS PER LOOP	INDUCTANCE READING (MICROHENRIES)	FREQUENCY (HERTZ)	J PIN STATUS
A	8 SB THRU BK	4	495	27413	ON
B	8 SB THRU FR	4	492	27499	ON
C	3 SB LT BK	4	499	27292	ON
D	3 SB LT FR	4	498	27328	ON
E	2 WB FAR	6	366	31902	ON
F	5 WB THRU	4	296	35433	OFF
G	4 WB LT	4	844	20997	ON
H	4 NB THRU BK	4	443	28968	ON
I	4 NB RT	4	346	32781	ON
J	7 NB THRU FR	4	445	28903	ON
K	7 NB LT BK	4	449	28797	ON
L	6 NB LT FR	4	451	28733	ON
M	6 EB FAR	6	357	32273	ON
N	6 EB THRU	4	298	35315	OFF
O	1 EB LT BK	4	842	21019	ON

J PIN STATUS: "ON" MEANS STANDARD DETECTOR SETUP. "OFF" MEANS J WIRE HAS BEEN DISCONNECTED. BUT INTACT, AT THE HARNESS PANEL WITH THE NECESSARY SPADE CONNECTION ATTACHED, MARKED, AND INSULATED.

ELECTRICAL LOAD FOR INTERSECTION				
STREET NAME	COMPONENT	NUMBER	WATTAGE EACH	BURNTIME %
US ROUTE 6	RED	6	10	68
	YELLOW	6	22	5
	GREEN	6	12	27
	YELLOW ARROW-LT.	4	9	5
	GREEN ARROW-LT.	4	3.4	11
	88	4	6	100
	88	4	6	13
LAKEWOOD DRIVE AND MICHAEL DRIVE	RED	6	10	74
	YELLOW	6	22	5
	GREEN	6	12	21
	YELLOW ARROW-LT.	4	9	5
	GREEN ARROW-LT.	4	3.4	11
	88	4	6	100
	88	4	6	13
TRAFFIC SIGNAL CABINET	CONTROLLER	1	6	100
	VEHICLE DETECTORS	16	4	100
	BATTERY BACKUP	1	50	100
LIGHTING	LUMINAIRE	4	250	100
	FLASHING BEACON	YELLOW	1	22

AGENCY RESPONSIBLE FOR TRAFFIC SIGNAL ENERGY CHARGES:
CITY OF MORRIS

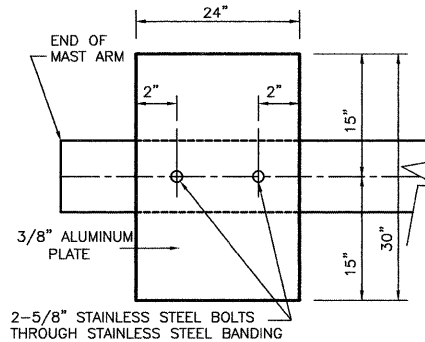
TOP OF FOUNDATION ELEVATIONS

FOUNDATION #	ELEVATION
1	529.95
2	*
3	528.00
3A	*
4	*
5	530.50
6	*
7	528.75
8	*

* - 3" ABOVE PROPOSED GRADE

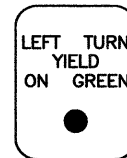
NOTE: TOP OF FOUNDATION ELEVATIONS SET FOR FUTURE ROADWAY WIDENING IMPROVEMENTS.

NOTE:
DAMPENING DEVICE SHALL CONSIST OF A 24" X 30" TYPE 1, UNPAINTED ALUMINUM SIGN STOCK MOUNTED HORIZONTALLY ON TOP OF MAST ARM WITH THE 30" LENGTH PERPENDICULAR TO THE ARM. COST OF THE DAMPENING DEVICE IS INCLUDED IN THE MAST ARM PAY ITEM.



2-5/8" STAINLESS STEEL BOLTS THROUGH STAINLESS STEEL BANDING
NOTE: MOUNT DAMPENING PLATE TO END OF EACH TRAFFIC SIGNAL MAST ARM.

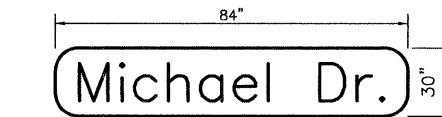
DAMPENING PLATE DETAIL - TOP VIEW



R10 - 12
24" X 30"

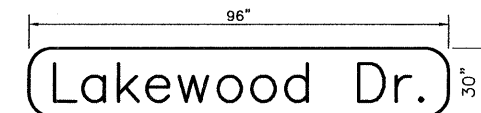
TYPE A SHEETING REQUIRED
4 SIGNS REQUIRED = 5 SQ.FT. EACH = 20 SQ.FT. TOTAL

THIS SIGN SHALL BE LOCATED 6" TO 12" TO THE RIGHT OF EACH 5 SECTION MAST ARM MOUNTED LEFT TURN SIGNAL AND DIRECTLY BELOW AND PARALLEL TO THE BACKPLATE OF EACH POST BRACKETED 5 SECTION LEFT TURN SIGNAL FOR THE NORTHBOUND AND SOUTHBOUND APPROACHES.



* 2 SIGNS REQUIRED = 17.50 SQ. FT. EACH = 35.00 SQ. FT. TOTAL

THIS STREET NAME SIGN SHALL BE PLACED ON THE MAST ARM NEAREST TO AND PARALLEL WITH MICHAEL DRIVE ON BOTH SIDES OF THE MAST ARM

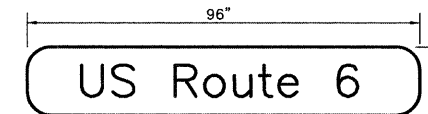


* 2 SIGNS REQUIRED = 20.00 SQ. FT. EACH = 40.00 SQ. FT. TOTAL

THIS STREET NAME SIGN SHALL BE PLACED ON THE MAST ARM NEAREST TO AND PARALLEL WITH LAKEWOOD DRIVE ON BOTH SIDES OF THE MAST ARM

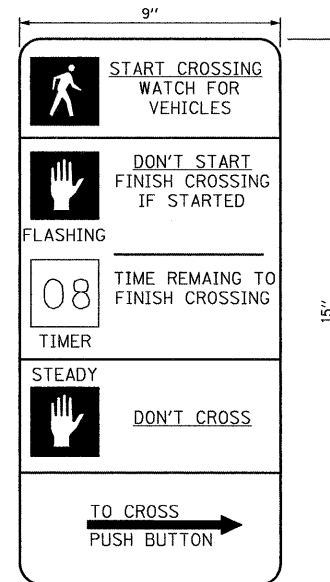
* TYPE ZZ SHEETING REQUIRED D SERIES LETTERS 1ST LINE 10" UPPER CASE/8" LOWER CASE

SEE STANDARD 720016 FOR ADDITIONAL DETAILS

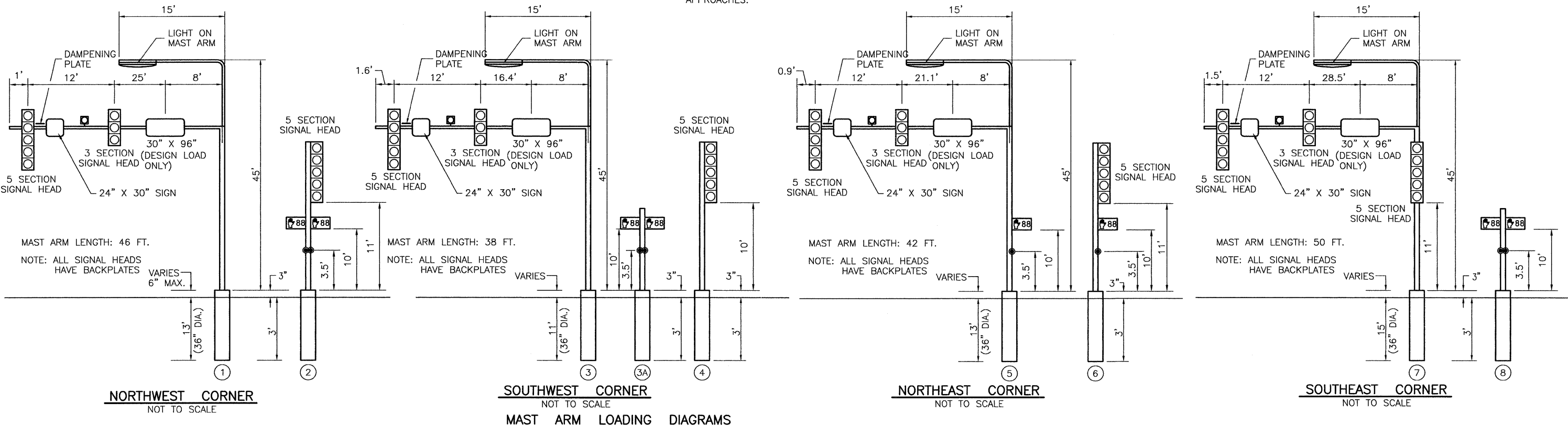


* 2 SIGN REQUIRED = 20.00 SQ. FT. EACH = 40.00 SQ. FT. TOTAL

THIS STREET NAME SIGN SHALL BE PLACED ON THE MAST ARMS PARALLEL WITH US ROUTE 6



THE CONTRACTOR SHALL SUPPLY AND MOUNT ONE SIGN WITH EACH PEDESTRIAN PUSH-BUTTON AND THIS SHALL BE INCLUDED IN THE COST OF PEDESTRIAN PUSH-BUTTON PAY ITEM.



ALL MAST ARM FOUNDATIONS SHALL BE 36" DIAMETER

CHAMLIN & ASSOCIATES, INC. © 2010

DRAWN BY: CHAMS	REVISIONS		
CHECKED BY: JKC	LEVEL	BY	DATE
DATE: 10/11			

CHAMLIN & ASSOCIATES
PERU MORRIS ILLINOIS

FAU 5952 (US 6)
SECTION 10-00083-00-TL
CITY OF MORRIS
GRUNDY COUNTY

TRAFFIC SIGNAL DETAILS

CONSTRUCTION PLANS

CONTRACT NO. 87486
CURRENT AS OF: 10/11
SCALE: AS NOTED
SHEET 35 OF 70
FILE NO.: 6969.00 Y- OF 70