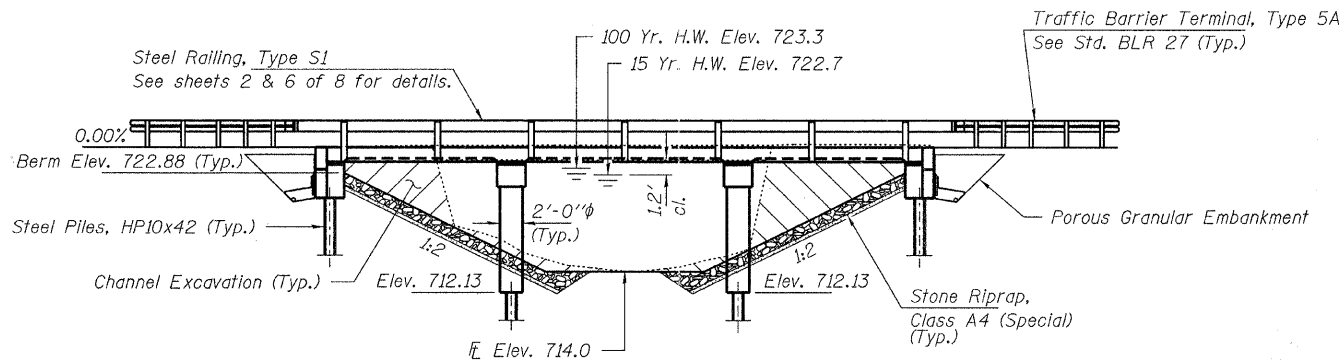


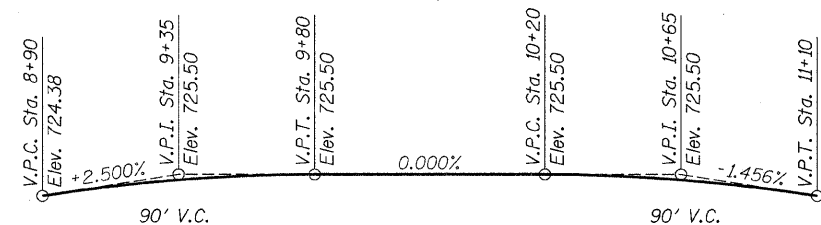
BENCHMARK: Chiseled "□" on N.E. curb. 11.0' Rt., Sta. 10+13, Elev. 726.09

EXISTING STRUCTURE NO. 057-4606: Sta. 10+00 - Single span cast in place concrete bridge with concrete curbs on closed timber abutments and wingwalls. 28.0' fc.-fc. abuts.; 26.0' o.-o. deck.

No Salvage



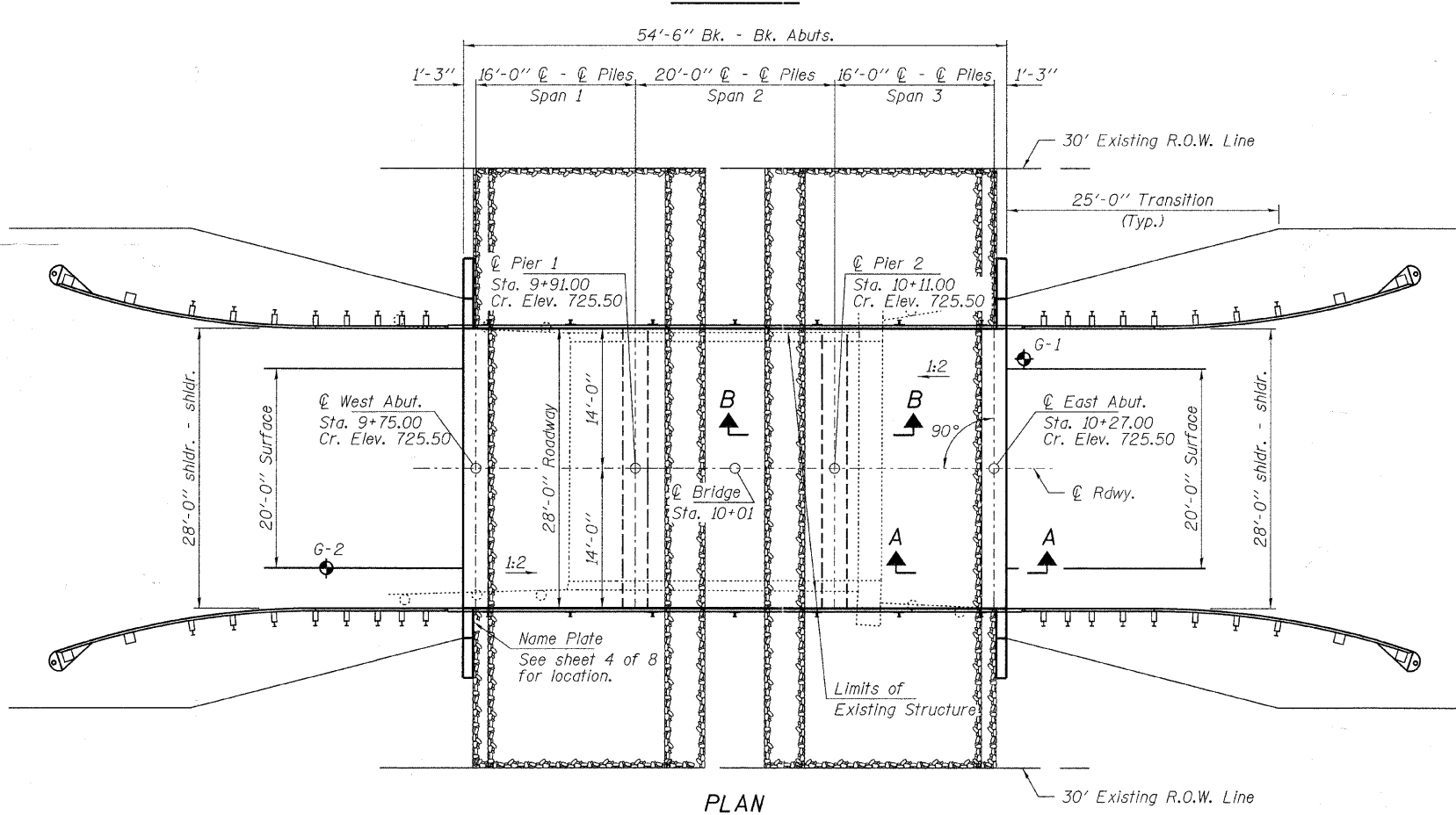
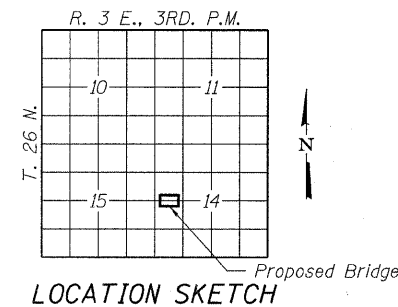
ELEVATION



PROFILE GRADE

SCHLIPF II BRIDGE  
BUILT 2011 BY  
McLEAN COUNTY  
GRIDLEY ROAD DISTRICT  
SEC. 09-18131-00-BR  
STR. NO. 057-4624  
LOADING HL-93

NAME PLATE  
See Std. 515001



PLAN

DESIGN STRESSES

FIELD UNITS

f'c = 3,500 psi Load Resistance  
fy = 60,000 psi (Reinf.) Factor Design

LOADING HL-93

Design Specifications: 2010 AASHTO LRFD with all applicable Interims.  
50#/Sq. Ft. included in dead load for future wearing surface.

SEISMIC DATA

Seismic Performance Zone (SPZ) = 1  
Design Spectral Acceleration at 1.0 sec. (SD1) = 0.114g  
Design Spectral Acceleration at 0.2 sec. (SDS) = 0.184g  
Soil Site Class = D

WATERWAY INFORMATION

Flood	Freq. Yr.	C.F.S.	Opening Sq. Ft.		Natural Head - Ft.		Headwater El.		
			Exist.	Prop.	H.W.E. Exist.	H.W.E. Prop.	Exist.	Prop.	
Design	10	1080	170	240	722.48	0.43	0.29	722.91	722.77
Base	15	1230	180	250	722.65	0.49	0.35	723.14	723.00
Max. Calc.	100	1960	200	270	723.25	0.63	0.71	723.88	723.96
Overtop	500	2600	210	290	723.67	0.81	0.84	724.48	724.51
	100	1960	200	270	723.25	0.63	0.71	723.88	723.96

10 Year Velocity through Existing Bridge = 6.4 fps  
10 Year Velocity through Proposed Bridge = 4.5 fps  
\*Proposed Low Grade Elevation accounts for future potential raising of appr. roadway.

DESIGN SCOUR ELEVATION TABLE

Design Scour Elevation (ft.)	W. Abut.	Pier 1	Pier 2	E. Abut.
	720.63	706.67	706.67	720.62

I certify that to the best of my knowledge, information and belief, this bridge design is structurally adequate for the design loading shown on the plans. The design is an economical one for the style of structure and complies with requirements of the current "AASHTO LRFD Specifications."

STEVEN W. MCGINSON  
10/19/2011  
ILLINOIS STRUCTURAL NO. 081-6064



Expires 11-30-2012

FILE NAME = 090141-ah-bridge.dgn	USER NAME =	DESIGNED - D.W.T.	REVISED -	STATE OF ILLINOIS McLEAN COUNTY HIGHWAY DEPARTMENT	GENERAL PLAN & ELEVATION STRUCTURE NO. 057-4624 SHEET NO. 1 OF 8 SHEETS	T.R.	SECTION	COUNTY	TOTAL SHEETS	SHEET NO.
HAMPTON, LENZINI AND RENWICK, INC. 3088 STEVENSON DRIVE, SUITE 201 SPRINGFIELD, ILLINOIS 62703	PLOT SCALE =	CHECKED - S.W.M.	REVISED -			25	09-18131-00-BR	McLEAN	20	13
ILR ILLINOIS PROFESSIONAL DESIGN FIRM LS / PE / SE CORP. 184-000859	PLOT DATE = 10/19/2011	DRAWN - D.A.B.	REVISED -			GRIDLEY ROAD DISTRICT		CONTRACT NO. 91450		
		CHECKED - S.W.M.	REVISED -			[ILLINOIS] FED. AID PROJECT BROS-01130331				