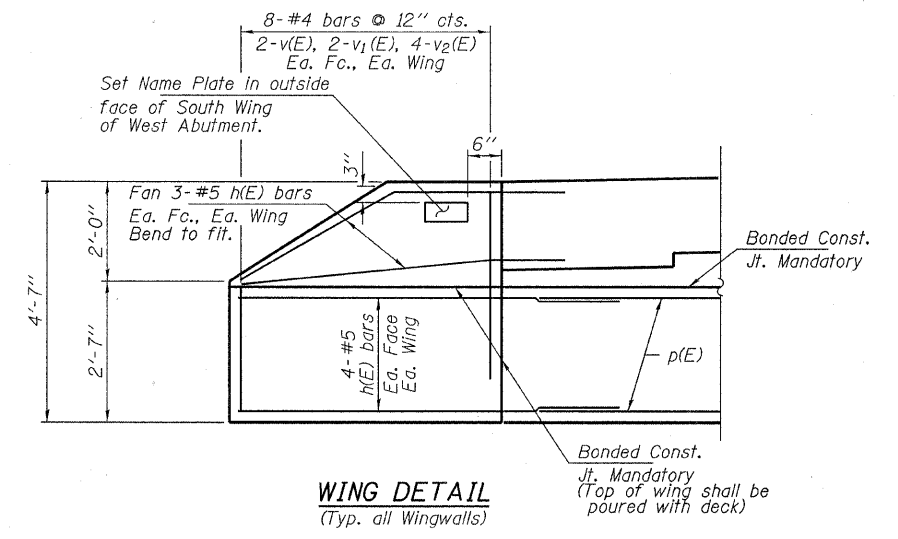


**REINFORCEMENT
TOP OF SLAB**

**REINFORCEMENT
BOTTOM OF SLAB**

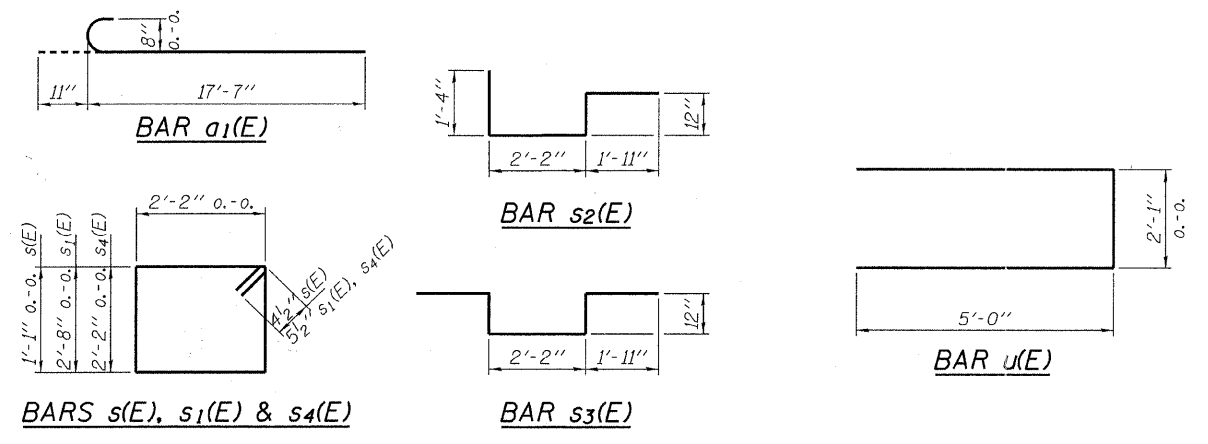
PLAN



**WING DETAIL
(Typ. all Wingwalls)**

BILL OF MATERIAL

BAR	NO.	SIZE	LENGTH	SHAPE
a(E)	96	#8	29'-8"	—
a1(E)	78	#8	18'-6"	—
a2(E)	39	#8	21'-0"	—
b(E)	92	#5	27'-8"	—
h(E)	56	#5	8'-3"	—
p(E)	44	#7	27'-8"	—
s(E)	110	#4	7'-3"	□
s1(E)	36	#5	10'-7"	□
s2(E)	56	#5	6'-5"	□
s3(E)	56	#5	8'-0"	□
s4(E)	40	#5	9'-7"	□
u(E)	28	#6	12'-1"	—
v(E)	16	#4	2'-4"	—
v1(E)	16	#4	3'-4"	—
v2(E)	32	#4	4'-4"	—
v3(E)	224	#5	3'-2"	—
Concrete Structures			Cu. Yd.	32.7
Concrete Superstructure			Cu. Yd.	67.1
Concrete Encasement			Cu. Yd.	10.2
Reinforcement Bars, Epoxy Coated			Pound	22,840
Steel Pile HP10x42			Foot	685
Test Pile Steel HP10x42			Each	2
Name Plates			Each	1



MIN. BAR LAPS
#8 = 5'-2"

Reinforcement bars designated (E) shall be epoxy coated. For Elevations, Sections A-A, and B-B see sheet 5 of 8. For Edge Beam Details see Detail A on sheet 5 of 8.