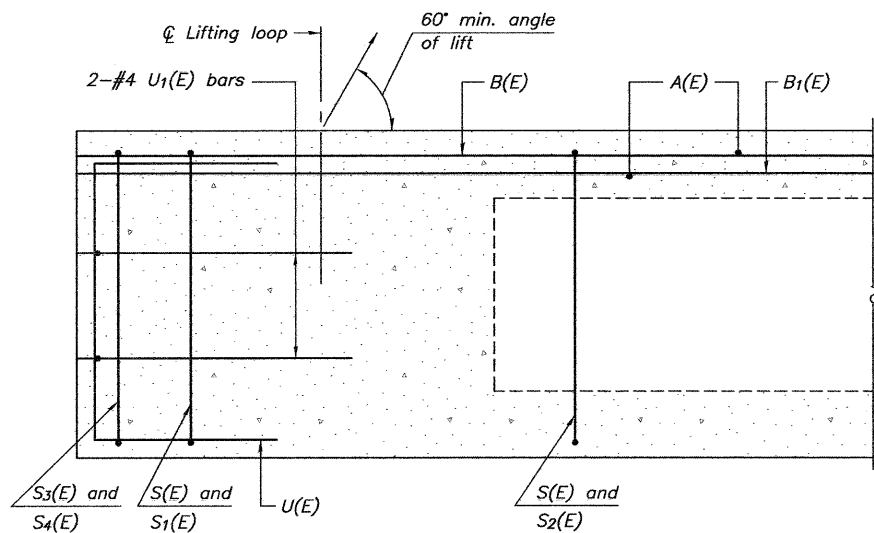


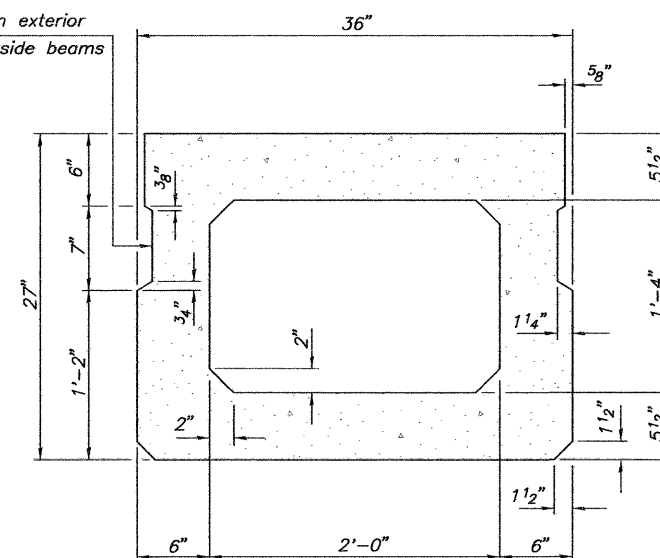
|                       |                |          |                   |           |
|-----------------------|----------------|----------|-------------------|-----------|
| ROUTE NO.             | SECTION        | COUNTY   | TOTAL SHEETS      | SHEET NO. |
| C.H. 9                | 10-00094-00-BR | MACOUPIN | 11                | 5         |
| FED. ROAD DIST. NO. 7 |                | ILLINOIS | FED. AID PROJECT- |           |



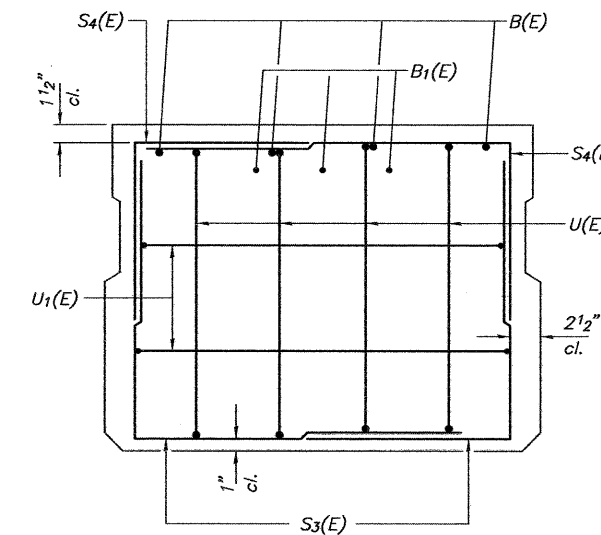
SECTION C-C

\* Rail Post Anchor Devices (Sheet 8) to be cast into exterior face of outside beam.

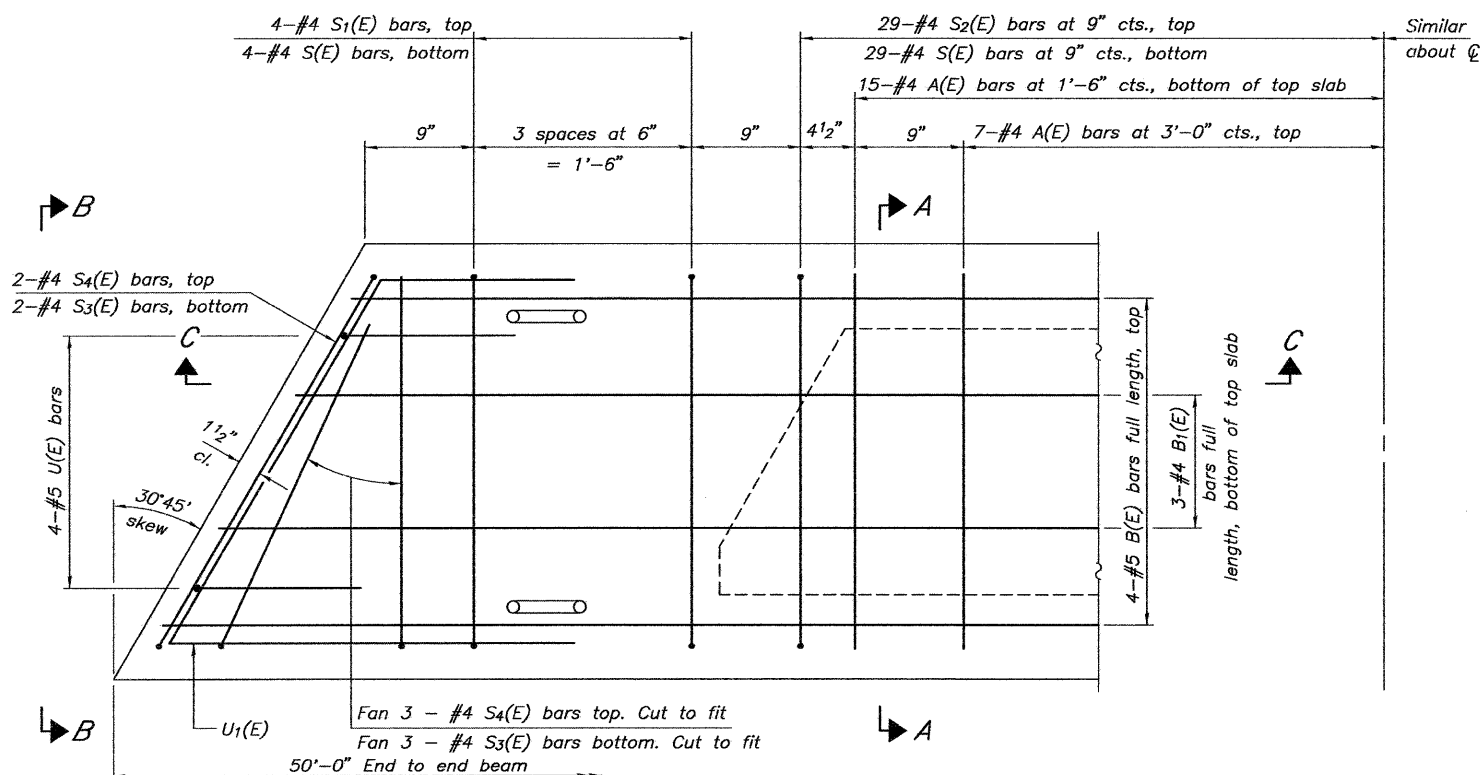
\* Omit key on exterior face of outside beams



SECTION A-A  
(Showing dimensions)

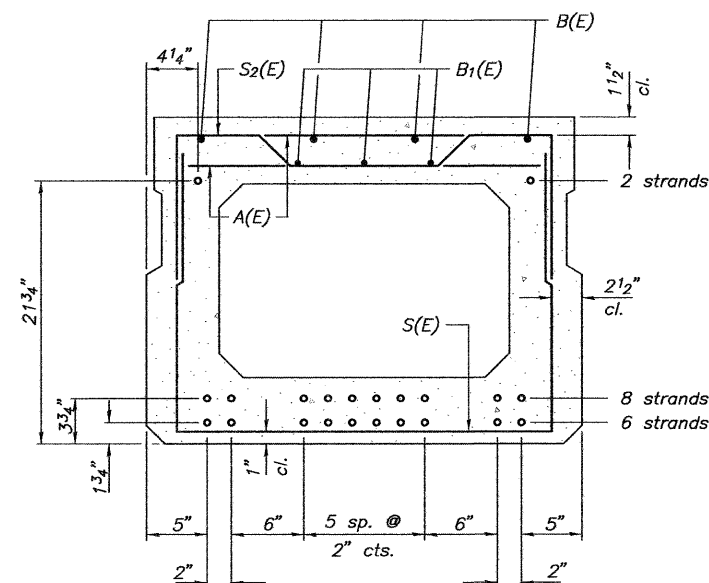


VIEW B-B



PLAN VIEW

Note: Spacing of S(E) and S2(E) bars may be adjusted up to 4" in the immediate area of the transverse tie diaphragms to miss the block outs for the transverse ties.



SECTION A-A

(Showing reinforcement and permissible strand locations)  
Note: Place the number of strands specified in each row symmetrically about the centerline of beam in the permissible strand locations shown.

BAR LIST  
ONE BEAM ONLY  
(For information only)

| Bar   | No. | Size | Length | Shape |
|-------|-----|------|--------|-------|
| A(E)  | 44  | #4   | 2'-7"  | —     |
| B(E)  | 4   | #5   | 49'-8" | —     |
| B1(E) | 3   | #4   | 49'-8" | —     |
| S(E)  | 66  | #4   | 6'-5"  | ┌     |
| S1(E) | 8   | #4   | 5'-11" | ┌     |
| S2(E) | 58  | #4   | 6'-2"  | ┌     |
| S3(E) | 8   | #4   | 4'-3"  | ┌     |
| S4(E) | 8   | #4   | 4'-0"  | ┌     |
| U(E)  | 8   | #5   | 4'-6"  | ┌     |
| U1(E) | 4   | #4   | 6'-11" | ┌     |

Note: See sheet 6 of 11 for additional details and Bill of Material.

|   |                        |                |            |
|---|------------------------|----------------|------------|
| SHEET TITLE   |                        | SUPERSTRUCTURE |            |
| PROJECT   | SECTION 10-00094-00-BR | PROJECT NO.    | 10017      |
|   | F.A.S. 1737/C.H. 9     | SCALE          |            |
|   | MACOUPIN COUNTY        | DATE           | 8/26/2011  |
|   | STA. 526+56.08         | DRAWN BY       | MRL        |
|   |                        | CHECKED BY     | MCB        |
| Coombe-Bloxdorf P.C.<br>CIVIL ENGINEERS-<br>STRUCTURAL ENGINEERS-<br>LAND SURVEYORS<br>Phone: 217/544-8477<br>Design Firm License No. 184-002703<br>755 South Grand Ave. W. Springfield, IL 62704 |                        | DRAWING NO.    | 5          |
|   |                        |                | OF 11 SHTS |