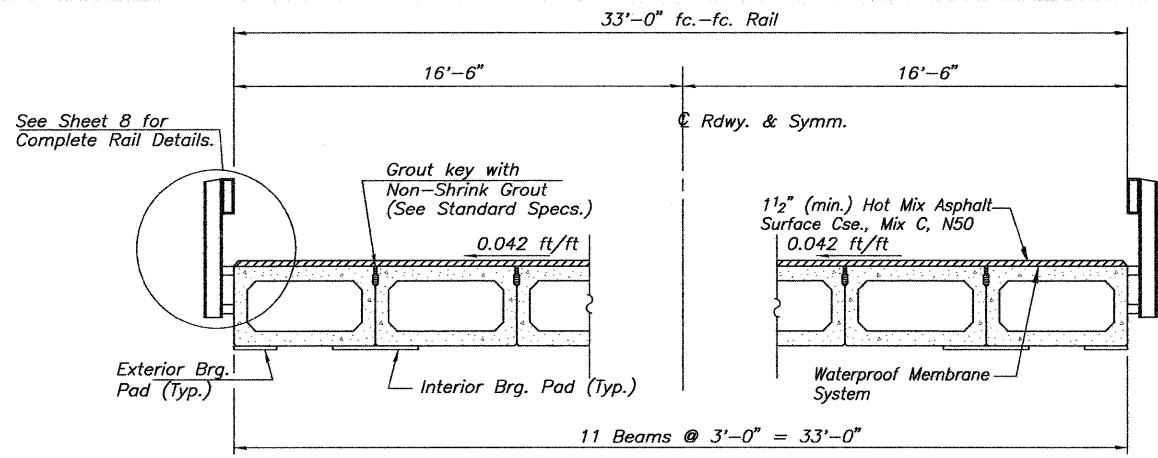
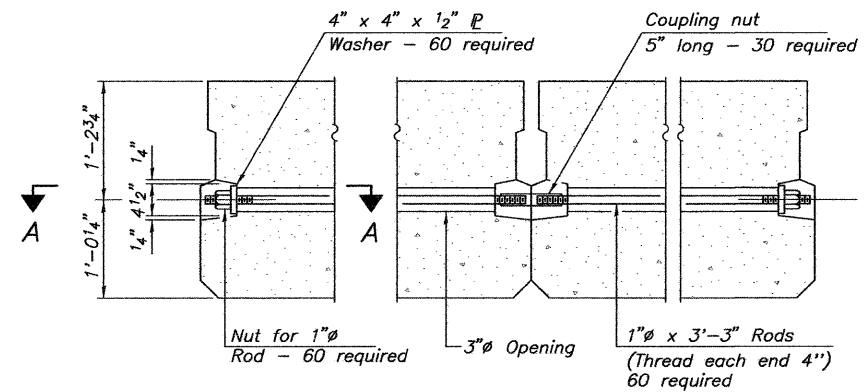


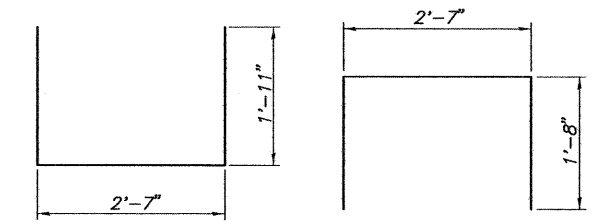
ROUTE NO.	SECTION	COUNTY	TOTAL SHEETS	SHEET NO.
C.H. 9	10-00094-00-BR	MACOUPIN	11	6
FED. ROAD DIST. NO. 7		ILLINOIS	FED. AID PROJECT-	



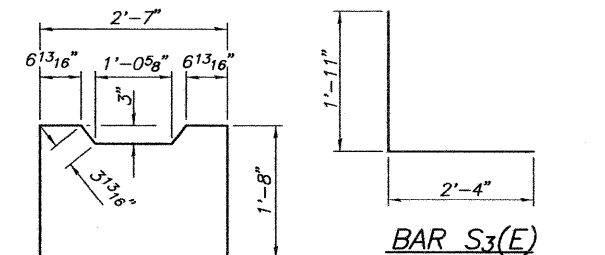
CROSS SECTION
Looking East



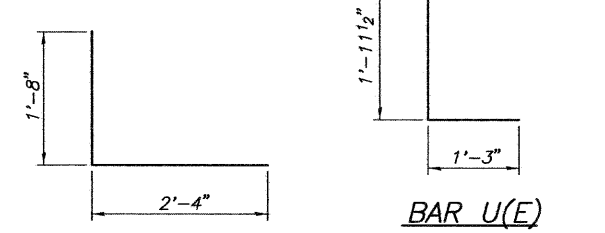
TYPICAL TRANSVERSE TIE ASSEMBLY



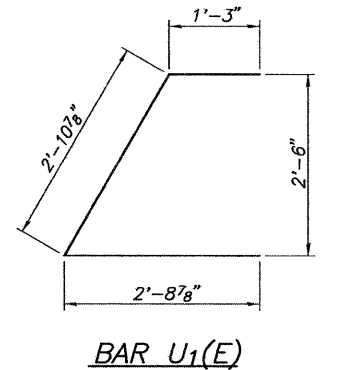
BAR S(E) **BAR S1(E)**



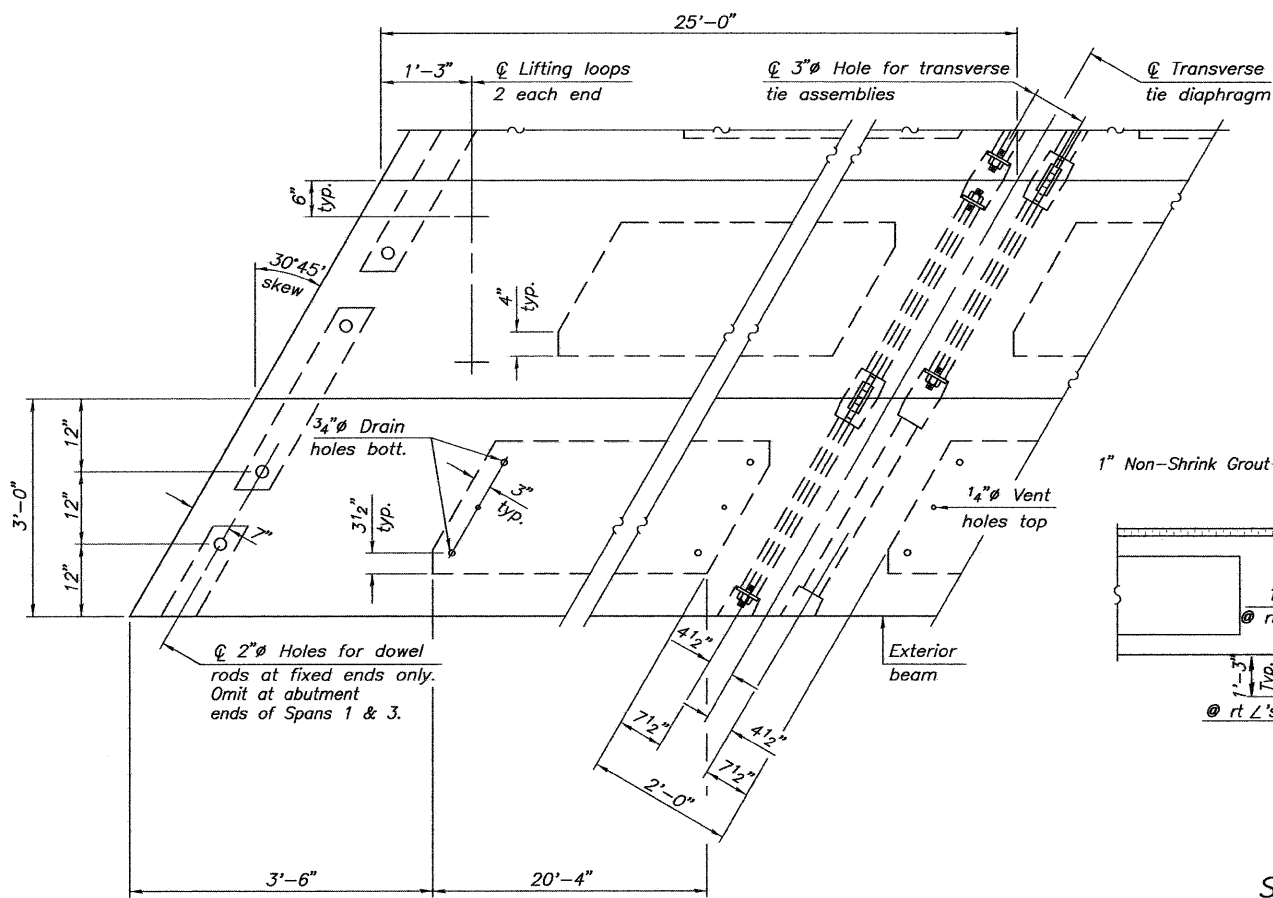
BAR S2(E) **BAR S3(E)**



BAR U(E) **BAR S4(E)**

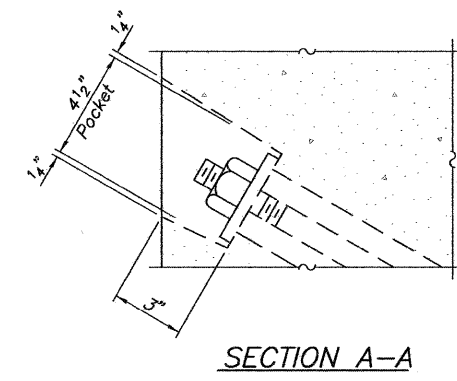


BAR U1(E)

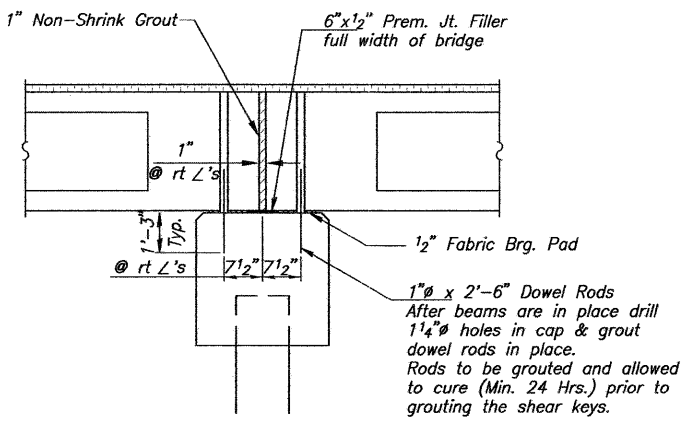


PLAN VIEW

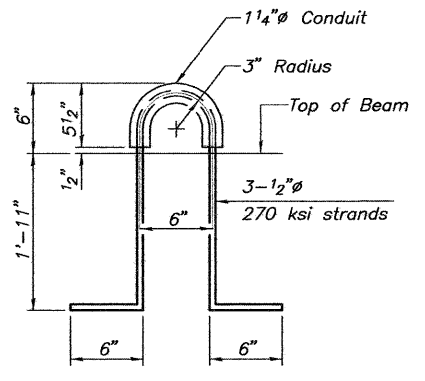
Note: Connect beams in pairs with the transverse tie configuration shown.



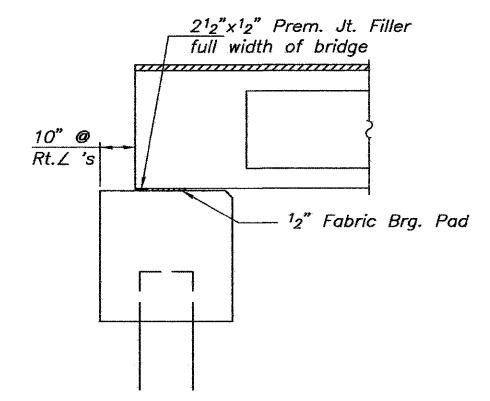
SECTION A-A



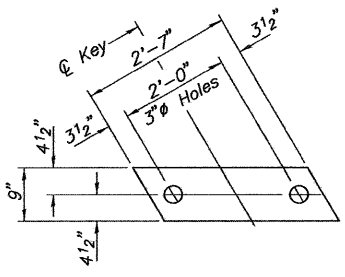
SECTION AT PIERS



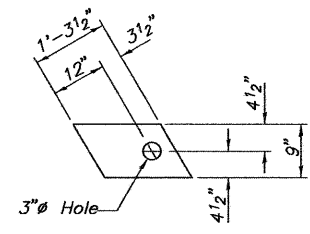
LIFTING LOOP DETAIL



SECTION AT ABUTMENTS



FABRIC BEARING PAD
(Interior)



FABRIC BEARING PAD
(Exterior)

FIXED

Notes: All bearing pads shall be 1/2" thick. Omit holes when using expansion bearings. Expansion bearing pad shall be bonded to the substructure.

NOTES

Prestressing steel shall be uncoated high strength, low relaxation 7-wire strand, Grade 270. The nominal diameter shall be 1/2" and the nominal cross-sectional area shall be 0.153 sq. in. The 1" rods in the transverse tie assembly shall be tightened to a snug fit and the threads set. Pockets on exterior faces of bridge shall be filled with grout after transverse tie assembly is in place.

Reinforcement bars shall conform to ASTM A 706, Grade 60.

Two 1/8" fabric adjusting shims of the dimensions of the exterior bearing pad shall be provided for each bearing pad location.

A minimum 2 1/2" lifting pin shall be used to engage the lifting loops during handling.

Corrosion Inhibitor, per Article 1020.05(b)(12) and 1021.06 of the Standard Specifications, shall be used in the concrete for precast prestressed concrete deck beams.

Compressive strength of prestressed concrete, f'c, shall be 6000 psi.

Compressive strength of prestressed concrete at release, f'ci, shall be 5000 psi.

BILL OF MATERIAL

Precast Prestressed Conc. Deck Bms. (27" depth)	Sq. Ft.	4,950
---	---------	-------

SHEET TITLE
SUPERSTRUCTURE DETAILS

PROJECT: SECTION 10-00094-00-BR
F.A.S. ROUTE 1737/C.H. 9
MACOUPIN COUNTY
STA. 526+56.08

PROJECT NO. 10017
SCALE: 1/8" = 1'-0"
DATE: 8/26/2011
DRAWN BY: MRL
CHECKED BY: MCB
DRAWING NO. 6

Coombe-Bloxdorf P.C.
-CIVIL ENGINEERS-
-STRUCTURAL ENGINEERS-
-LAND SURVEYORS-
Phone: 217/544-8477
Firm License No. 184-002703
755 South Grand Ave. V. Springfield, IL 62704

OF 11 SHTS