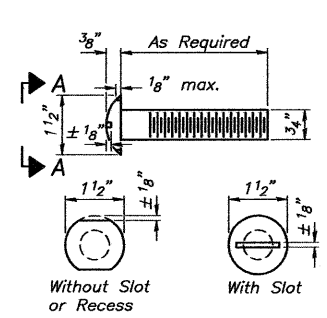
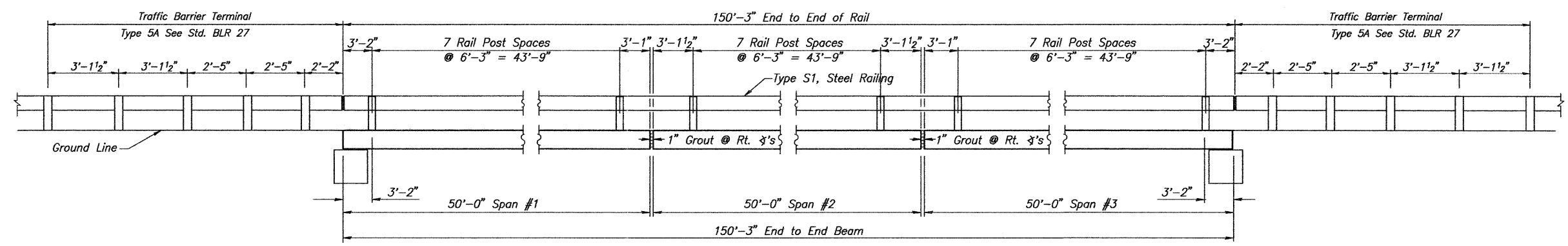


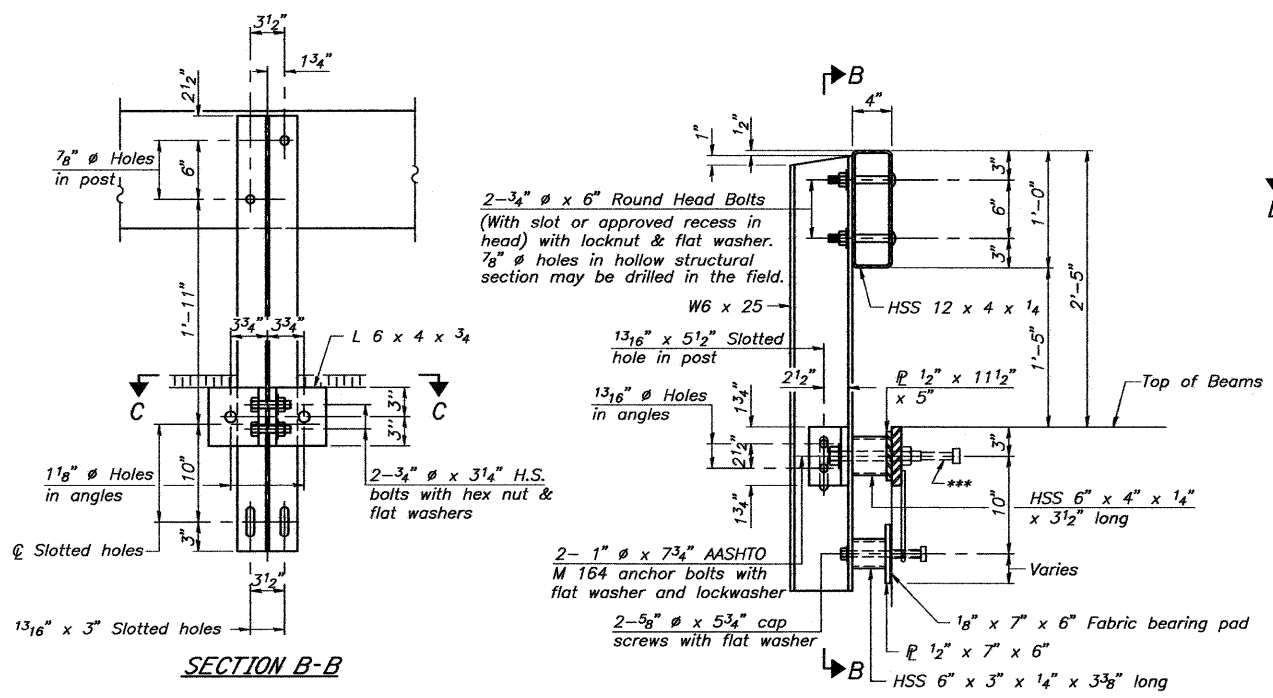
ROUTE NO.	SECTION	COUNTY	TOTAL SHEETS	SHEET NO.
C.H. 9	10-00094-00-BR	MACOUPIN	11	8
FED. ROAD DIST. NO. 7	ILLINOIS	FED. AID PROJECT-		



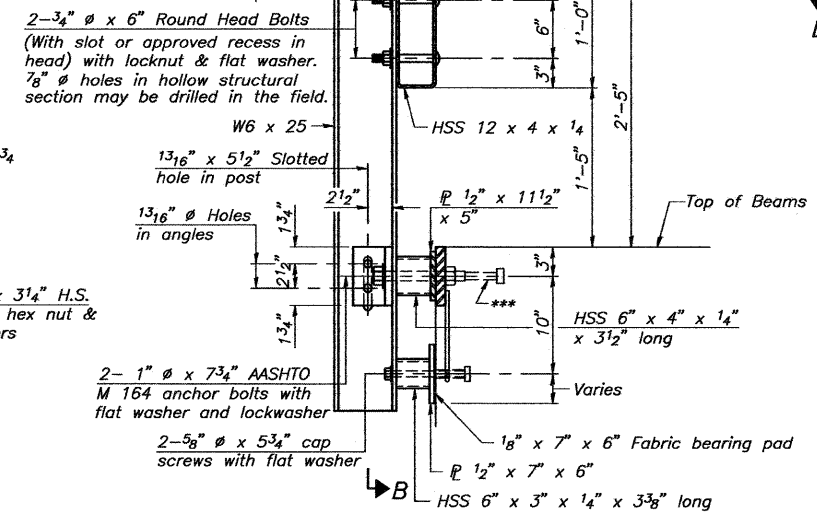
VIEW A-A  
ROUND HEAD BOLT



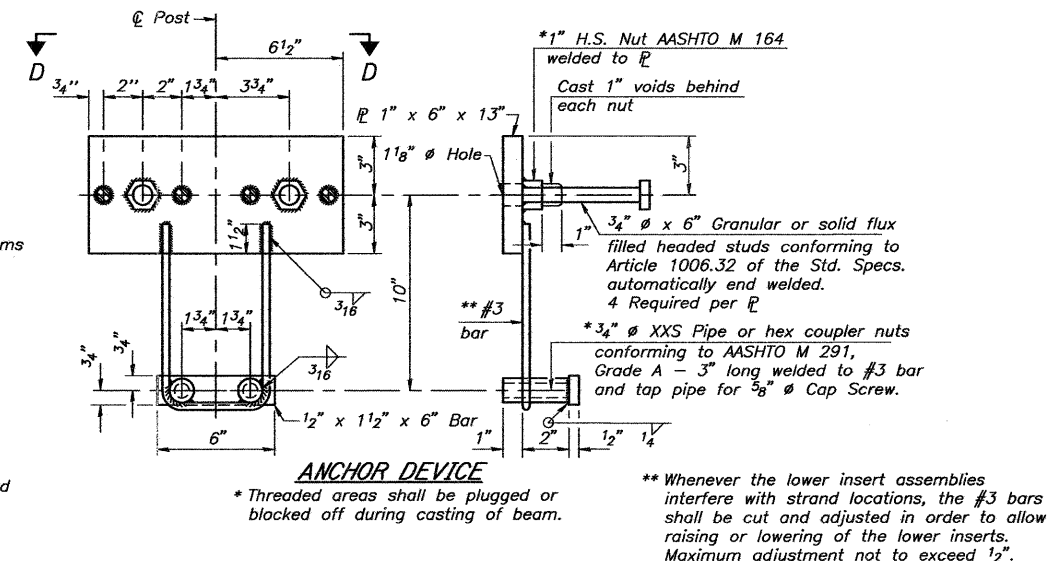
ELEVATION  
Showing Inside Face of Rail



SECTION B-B

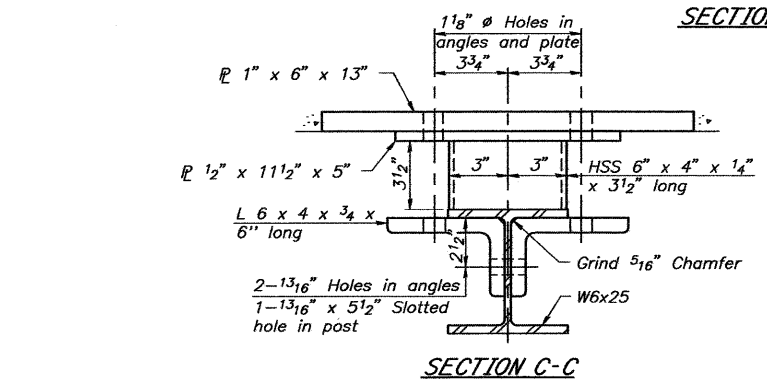


SECTION AT RAILING POST

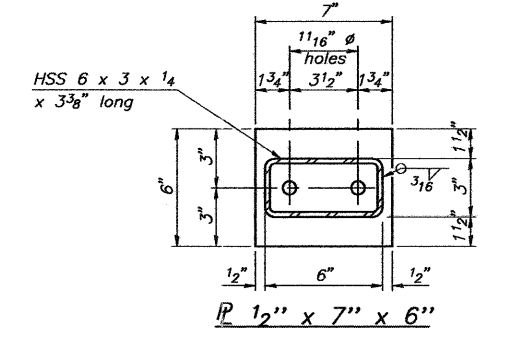


ANCHOR DEVICE  
\*Threaded areas shall be plugged or blocked off during casting of beam.

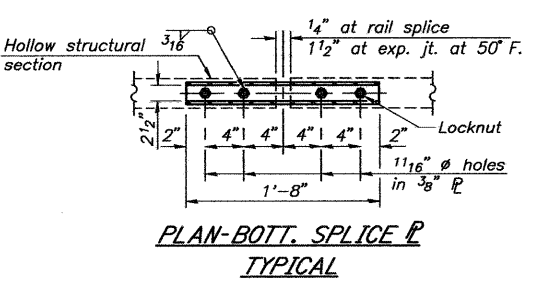
Notes:  
All field drilled holes shall be coated with an approved zinc rich paint before erection.  
For multi-span bridges, sufficient 1/4" x 6" x 1'-2" galvanized steel shims shall be provided to align rail between adjacent spans. Cost included with Steel Railing, Type S-1.  
All steel rail elements shall be galvanized according to Article 509.05 of the Standard Specifications.  
\*\*\* The studs of the anchor devices shall be placed below the top reinforcement bars and the outermost longitudinal reinforcement bar shall be placed directly above the studs of the rail post anchor device.



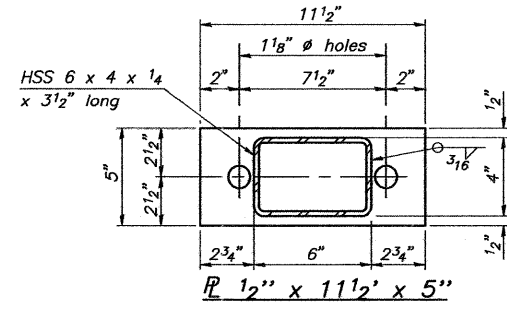
SECTION C-C



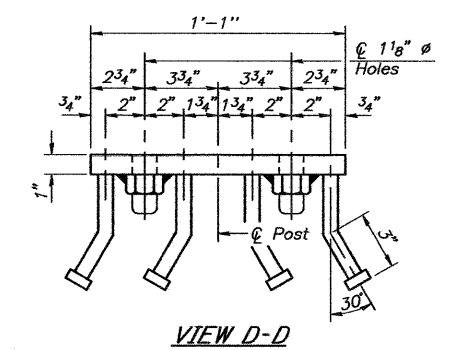
SECTIONS AT RAIL SPLICE



PLAN-BOTT. SPLICE R  
TYPICAL



END OF RAIL DETAILS



VIEW D-D

BILL OF MATERIAL

Item	Unit	Quantity
Steel Railing, Type S1	Foot	302

SHEET TITLE

STEEL RAILING, S1

PROJECT: SECTION 10-00094-00-BR  
F.A.S. ROUTE 1737/C.H. 9  
MACOUPIN COUNTY  
STATION 526+56.08

PROJ. NO. 10017  
SCALE  
DATE 8/25/2011  
DRAWN BY PFW  
CHECKED BY MRL  
DESIGNED BY MRL

8

Combe-Bloxdorf P.C.  
CIVIL ENGINEERS-  
STRUCTURAL ENGINEERS-  
LAND SURVEYORS-  
Phone: 217/544-0477  
Design Firm License No. 184-002703  
755 South Grand Ave. W, Springfield, IL 62704 OF.11. SHTS