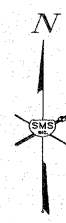
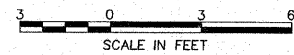
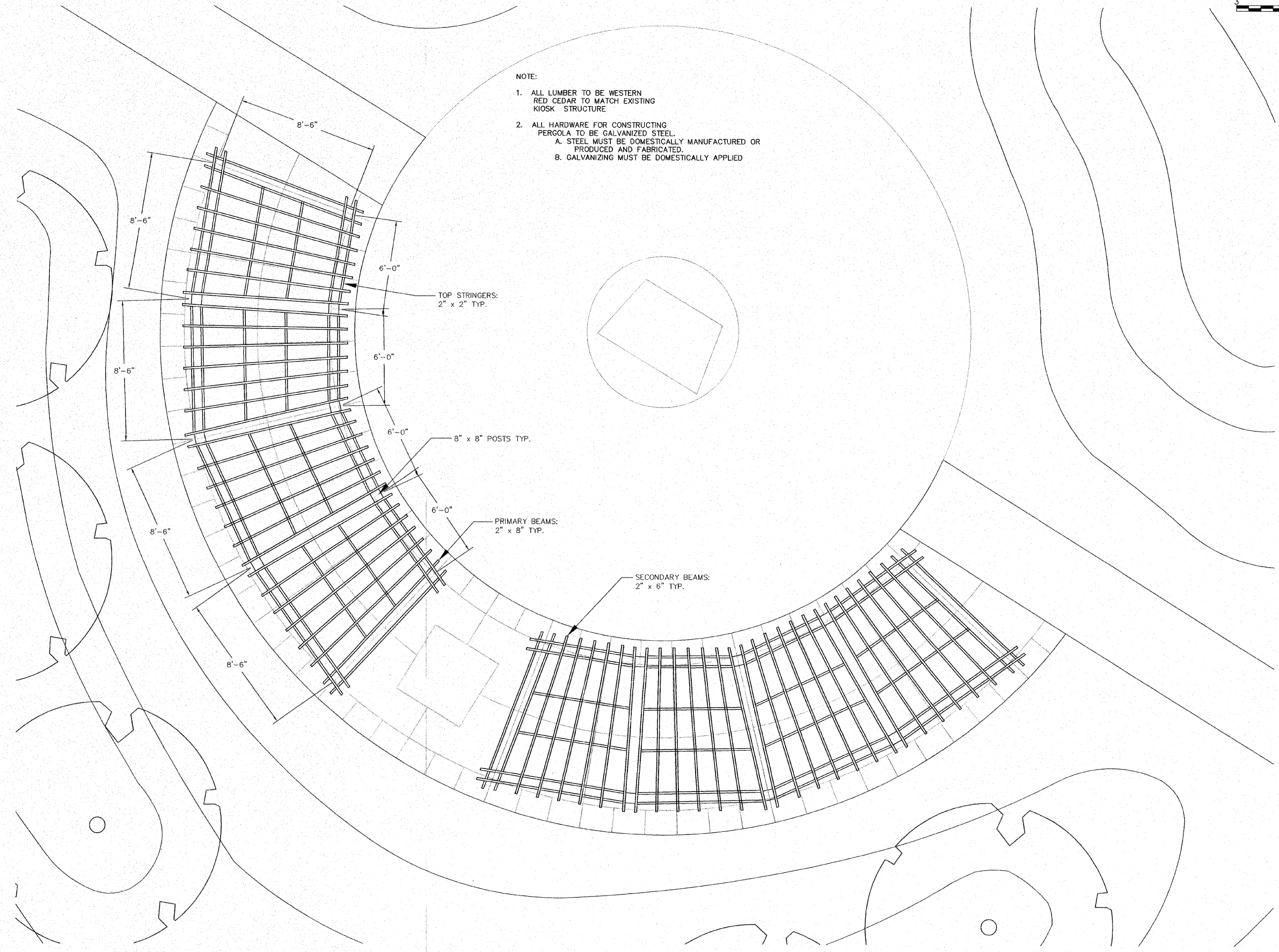


SECTION	COUNTY	TOTAL SHEETS	SHEET NO.
08-00021-00-PK	MADISON	12	7
CONTRACT NO. 97473			



NOTE:

1. ALL LUMBER TO BE WESTERN RED CEDAR TO MATCH EXISTING KIOSK STRUCTURE
2. ALL HARDWARE FOR CONSTRUCTING PERGOLA TO BE GALVANIZED STEEL.
 - A. STEEL MUST BE DOMESTICALLY MANUFACTURED OR PRODUCED AND FABRICATED.
 - B. GALVANIZING MUST BE DOMESTICALLY APPLIED



REVISIONS

PDS
 PLANNING DESIGN STUDIO
 727 North First Street, Suite 360
 Saint Louis, Missouri, 63102
 Phone (314) 241-3600

**IMPROVEMENT PLANS FOR HOFFMAN GARDENS
 VILLAGE OF GODFREY, ILLINOIS
 PERGOLA PLAN**

DWG. NO.	HOFFMAN PERGOLA PLAN.DWG
REF. BK.	PG.
JOB NO.	437560
DSN. BY:	SJW/DDT
DWN. BY:	BCS
CHK. BY:	SJW
DATE:	MAY, 2011

SCALE: 1"=3'
 SHEET L2 OF 12