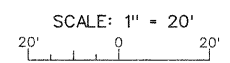
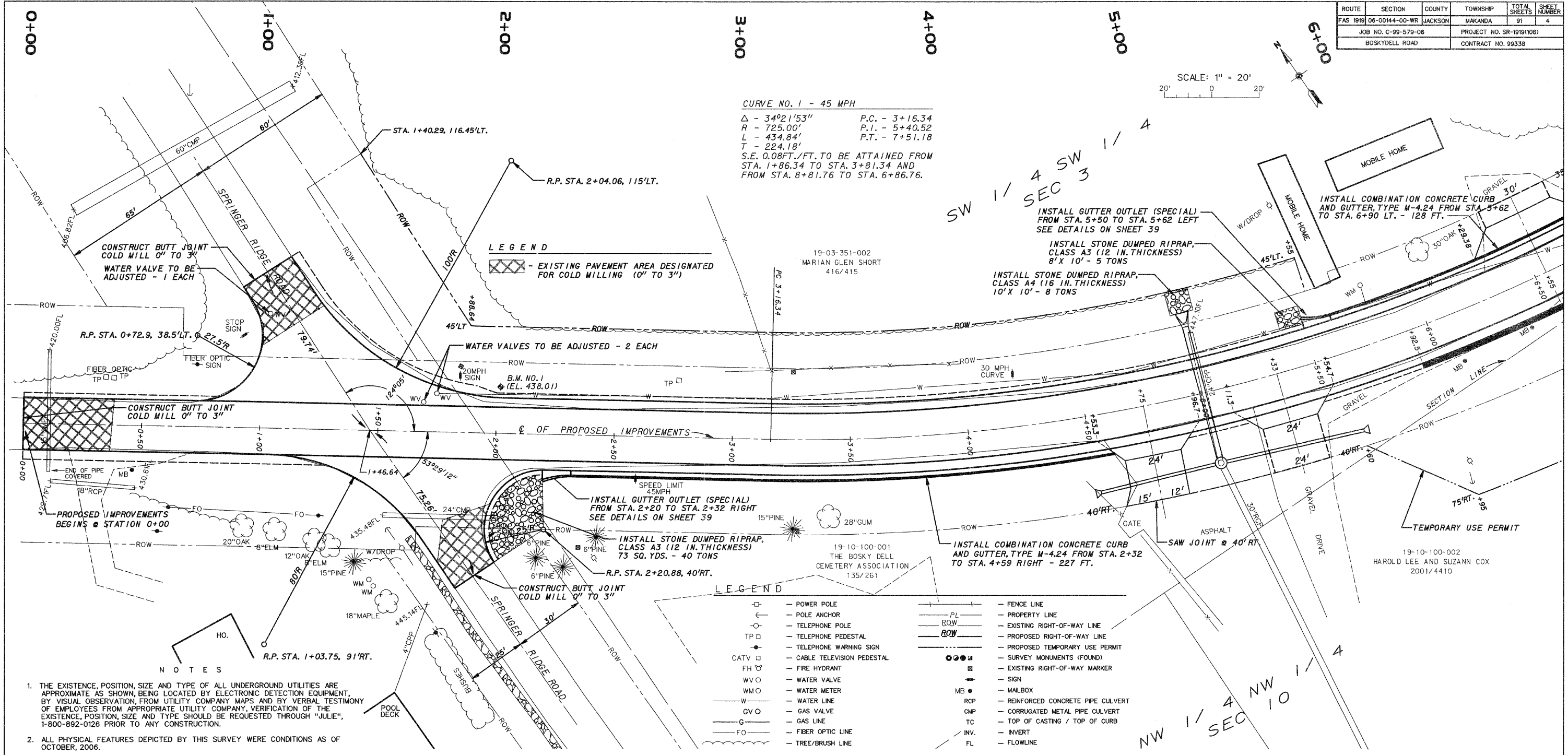


| ROUTE               | SECTION        | COUNTY  | TOWNSHIP                 | TOTAL SHEETS | SHEET NUMBER |
|---------------------|----------------|---------|--------------------------|--------------|--------------|
| FAS 1919            | 06-00144-00-WR | JACKSON | MAKANDA                  | 91           | 4            |
| JOB NO. C-99-579-06 |                |         | PROJECT NO. SR-1919(106) |              |              |
| BOSKYDELL ROAD      |                |         | CONTRACT NO. 99338       |              |              |



**CURVE NO. 1 - 45 MPH**  
 $\Delta = 34^{\circ}21'53''$  P.C. - 3+16.34  
 $R = 725.00'$  P.I. - 5+40.52  
 $L = 434.84'$  P.T. - 7+51.18  
 $T = 224.18'$   
 S.E. 0.08 FT./FT. TO BE ATTAINED FROM STA. 1+86.34 TO STA. 3+81.34 AND FROM STA. 8+81.76 TO STA. 6+86.76.

SW 1/4 SEC 3  
 SW 1/4 SEC 10



- LEGEND**
- - POWER POLE
  - - POLE ANCHOR
  - - TELEPHONE POLE
  - TP □ - TELEPHONE PEDESTAL
  - - TELEPHONE WARNING SIGN
  - - CABLE TELEVISION PEDESTAL
  - FH ○ - FIRE HYDRANT
  - WV ○ - WATER VALVE
  - WM ○ - WATER METER
  - W - WATER LINE
  - GVO - GAS VALVE
  - G - GAS LINE
  - FO - FIBER OPTIC LINE
  - - TREE/BRUSH LINE
  - PL - FENCE LINE
  - - PROPERTY LINE
  - - EXISTING RIGHT-OF-WAY LINE
  - - PROPOSED RIGHT-OF-WAY LINE
  - - PROPOSED TEMPORARY USE PERMIT
  - - SURVEY MONUMENTS (FOUND)
  - - EXISTING RIGHT-OF-WAY MARKER
  - - SIGN
  - MB ● - MAILBOX
  - RCP - REINFORCED CONCRETE PIPE CULVERT
  - CMP - CORRUGATED METAL PIPE CULVERT
  - TC - TOP OF CASTING / TOP OF CURB
  - INV - INVERT
  - FL - FLOWLINE

**NOTES**

- THE EXISTENCE, POSITION, SIZE AND TYPE OF ALL UNDERGROUND UTILITIES ARE APPROXIMATE AS SHOWN, BEING LOCATED BY ELECTRONIC DETECTION EQUIPMENT, BY VISUAL OBSERVATION, FROM UTILITY COMPANY MAPS AND BY VERBAL TESTIMONY OF EMPLOYEES FROM APPROPRIATE UTILITY COMPANY. VERIFICATION OF THE EXISTENCE, POSITION, SIZE AND TYPE SHOULD BE REQUESTED THROUGH "JULIE", 1-800-892-0126 PRIOR TO ANY CONSTRUCTION.
- ALL PHYSICAL FEATURES DEPICTED BY THIS SURVEY WERE CONDITIONS AS OF OCTOBER, 2006.

