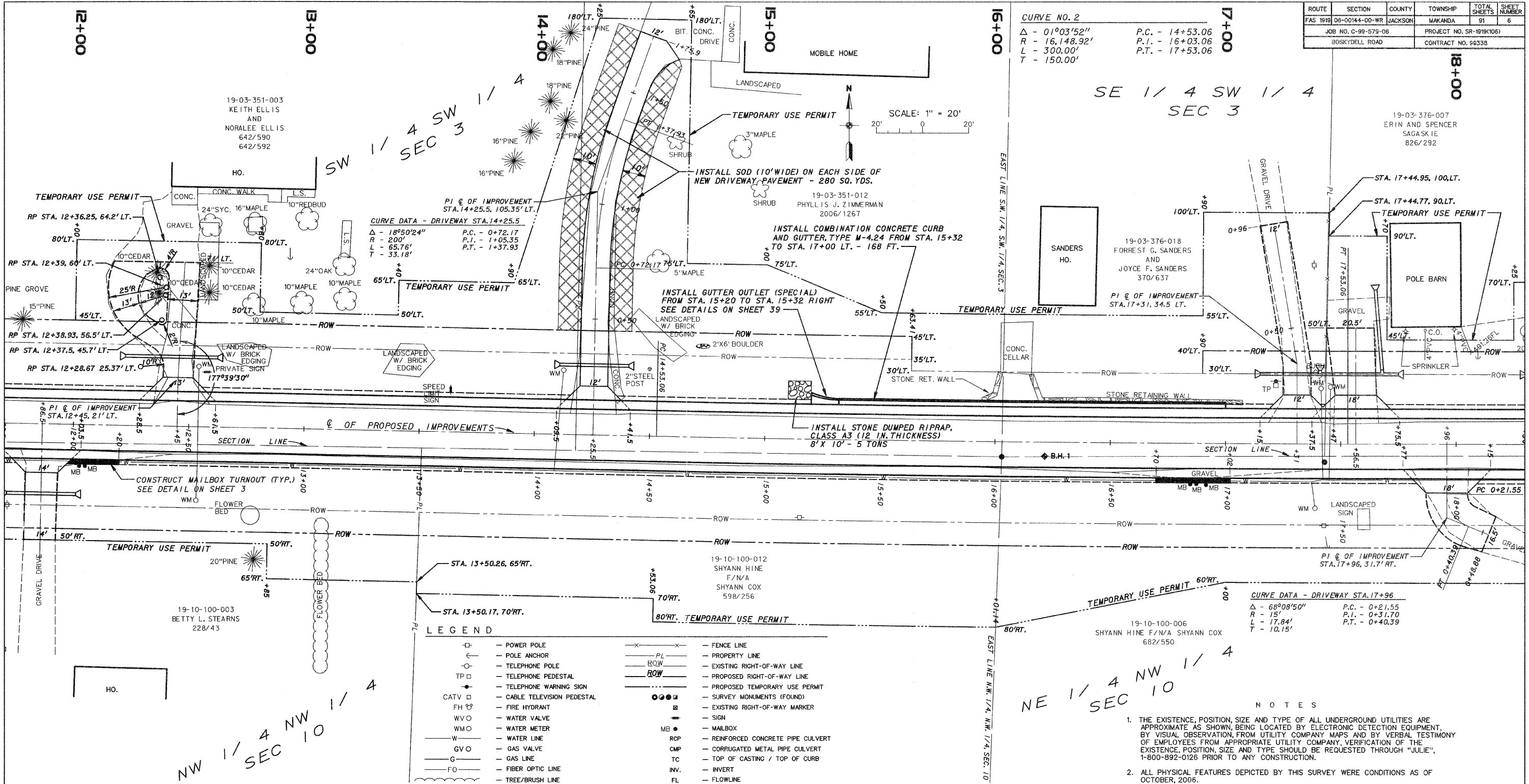


ROUTE	SECTION	COUNTY	TOWNSHIP	TOTAL SHEETS	SHEET NUMBER
FAS 1919	08-00144-00-WR	JACKSON	WAKANDA	91	6
JOB NO. C-99-579-06			PROJECT NO. SR-1919(106)		
BOSKYDELL ROAD			CONTRACT NO. 99339		

CURVE NO. 2  
 $\Delta = 01^{\circ}03'52''$  P.C. - 14+53.06  
 $R = 16,148.92'$  P.I. - 16+03.06  
 $L = 300.00'$  P.T. - 17+53.06  
 $T = 150.00'$

SE 1/4 SW 1/4  
 SEC 3

19-03-376-007  
 ERIN AND SPENCER  
 SAGASKIE  
 826/292



CURVE DATA - DRIVEWAY STA. 14+25.5  
 $\Delta = 18^{\circ}50'24''$  P.C. - 0+72.17  
 $R = 200'$  P.I. - 1+05.35  
 $L = 65.76'$  P.T. - 1+37.93  
 $T = 33.18'$

INSTALL COMBINATION CONCRETE CURB AND GUTTER, TYPE M-4.24 FROM STA. 15+32 TO STA. 17+00 LT. - 168 FT.

INSTALL GUTTER OUTLET (SPECIAL) FROM STA. 15+20 TO STA. 15+32 RIGHT SEE DETAILS ON SHEET 39

INSTALL STONE DUMPED RIPRAP, CLASS A3 (12 IN. THICKNESS) 8' X 10' - 5 TONS

CONSTRUCT MAILBOX TURNOUT (TYP.) SEE DETAIL ON SHEET 3

LEGEND

- |     |                           |           |                                  |
|-----|---------------------------|-----------|----------------------------------|
| ⊕   | POWER POLE                | — x — x — | FENCE LINE                       |
| ⊙   | POLE ANCHOR               | — PL —    | PROPERTY LINE                    |
| ⊖   | TELEPHONE POLE            | — ROW —   | EXISTING RIGHT-OF-WAY LINE       |
| ⊕   | TELEPHONE PEDESTAL        | — ROW —   | PROPOSED RIGHT-OF-WAY LINE       |
| ⊖   | TELEPHONE WARNING SIGN    | — ROW —   | PROPOSED TEMPORARY USE PERMIT    |
| ⊕   | CABLE TELEVISION PEDESTAL | ⊙         | SURVEY MONUMENTS (FOUND)         |
| FH  | FIRE HYDRANT              | ⊖         | EXISTING RIGHT-OF-WAY MARKER     |
| WV  | WATER VALVE               | —         | SIGN                             |
| WMO | WATER METER               | MB        | MAILBOX                          |
| W   | WATER LINE                | RCP       | REINFORCED CONCRETE PIPE CULVERT |
| GV  | GAS VALVE                 | CMP       | CORRUGATED METAL PIPE CULVERT    |
| G   | GAS LINE                  | TC        | TOP OF CASTING / TOP OF CURB     |
| FO  | FIBER OPTIC LINE          | INV.      | INVERT                           |
| —   | TREE/BRUSH LINE           | FL        | FLOWLINE                         |

NE 1/4 NW 1/4  
 SEC 10

- NOTES
- THE EXISTENCE, POSITION, SIZE AND TYPE OF ALL UNDERGROUND UTILITIES ARE APPROXIMATE AS SHOWN, BEING LOCATED BY ELECTRONIC DETECTION EQUIPMENT, BY VISUAL OBSERVATION, FROM UTILITY COMPANY MAPS AND BY VERBAL TESTIMONY OF EMPLOYEES FROM APPROPRIATE UTILITY COMPANY. VERIFICATION OF THE EXISTENCE, POSITION, SIZE AND TYPE SHOULD BE REQUESTED THROUGH "JULIE", 1-800-892-0126 PRIOR TO ANY CONSTRUCTION.
  - ALL PHYSICAL FEATURES DEPICTED BY THIS SURVEY WERE CONDITIONS AS OF OCTOBER, 2006.

