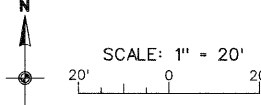
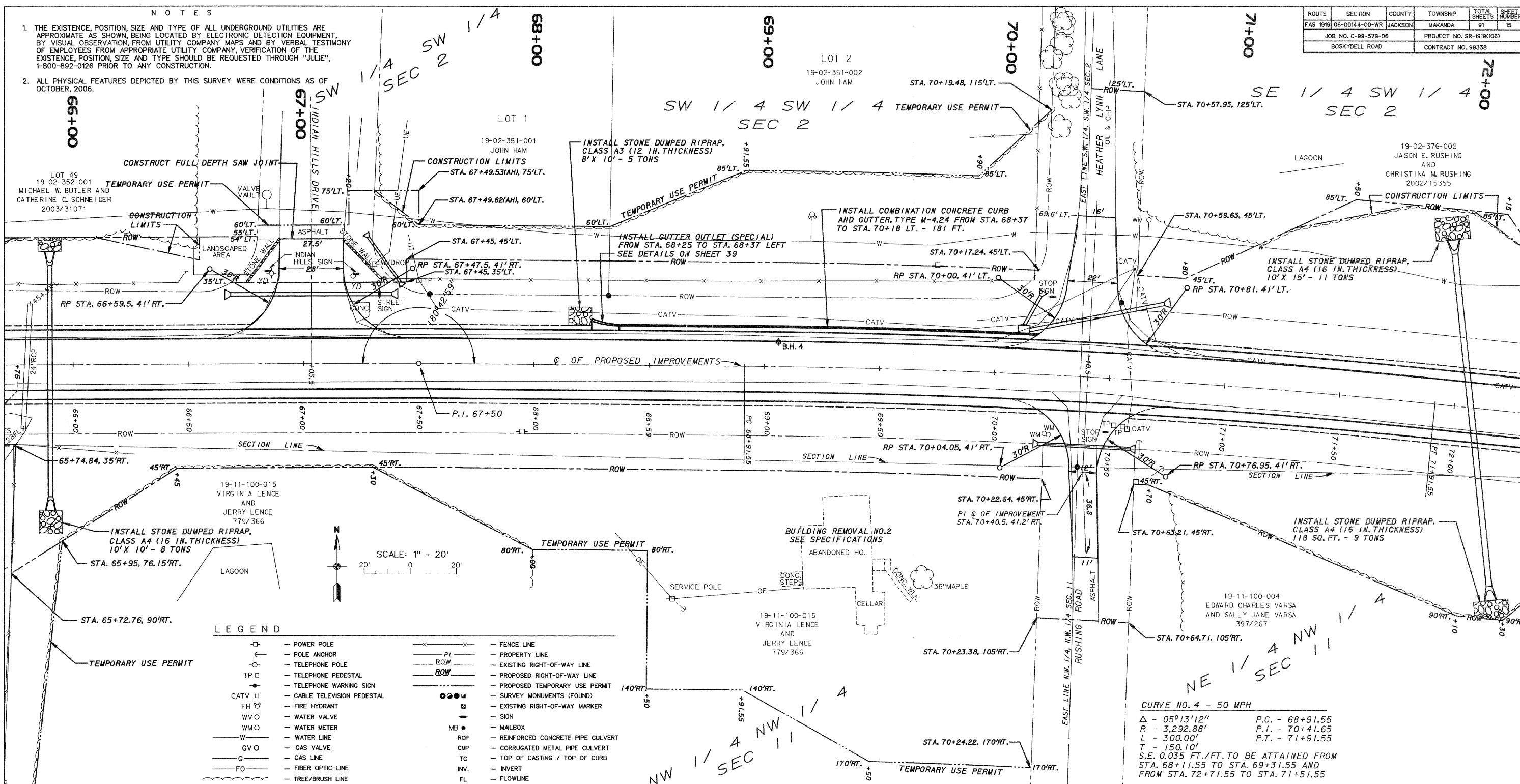


NOTES

- THE EXISTENCE, POSITION, SIZE AND TYPE OF ALL UNDERGROUND UTILITIES ARE APPROXIMATE AS SHOWN, BEING LOCATED BY ELECTRONIC DETECTION EQUIPMENT, BY VISUAL OBSERVATION, FROM UTILITY COMPANY MAPS AND BY VERBAL TESTIMONY OF EMPLOYEES FROM APPROPRIATE UTILITY COMPANY. VERIFICATION OF THE EXISTENCE, POSITION, SIZE AND TYPE SHOULD BE REQUESTED THROUGH "JULIE", 1-800-892-0126 PRIOR TO ANY CONSTRUCTION.
- ALL PHYSICAL FEATURES DEPICTED BY THIS SURVEY WERE CONDITIONS AS OF OCTOBER, 2006.

ROUTE	SECTION	COUNTY	TOWNSHIP	TOTAL SHEETS	SHEET NUMBER
FAS 1919	06-00144-00-WR	JACKSON	MAKANDA	91	15
JOB NO. C-99-579-06			PROJECT NO. SR-1919(106)		
BOSKYDELL ROAD			CONTRACT NO. 99338		



LEGEND

	POWER POLE		FENCE LINE
	POLE ANCHOR		PROPERTY LINE
	TELEPHONE POLE		EXISTING RIGHT-OF-WAY LINE
	TELEPHONE PEDESTAL		PROPOSED RIGHT-OF-WAY LINE
	TELEPHONE WARNING SIGN		PROPOSED TEMPORARY USE PERMIT
	CABLE TELEVISION PEDESTAL		SURVEY MONUMENTS (FOUND)
	FIRE HYDRANT		EXISTING RIGHT-OF-WAY MARKER
	WATER VALVE		SIGN
	WATER METER		MAILBOX
	WATER LINE		REINFORCED CONCRETE PIPE CULVERT
	GAS VALVE		CORRUGATED METAL PIPE CULVERT
	GAS LINE		TOP OF CASTING / TOP OF CURB
	FIBER OPTIC LINE		INVERT
	TREE/BRUSH LINE		FLOWLINE

CURVE NO. 4 - 50 MPH
 $\Delta = 05^{\circ}13'12''$ P.C. - 68+91.55
 $R = 3,292.88'$ P.I. - 70+41.65
 $L = 300.00'$ P.T. - 71+91.55
 $T = 150.10'$
 S.E. 0.035 FT./FT. TO BE ATTAINED FROM STA. 68+11.55 TO STA. 69+31.55 AND FROM STA. 72+71.55 TO STA. 71+51.55

