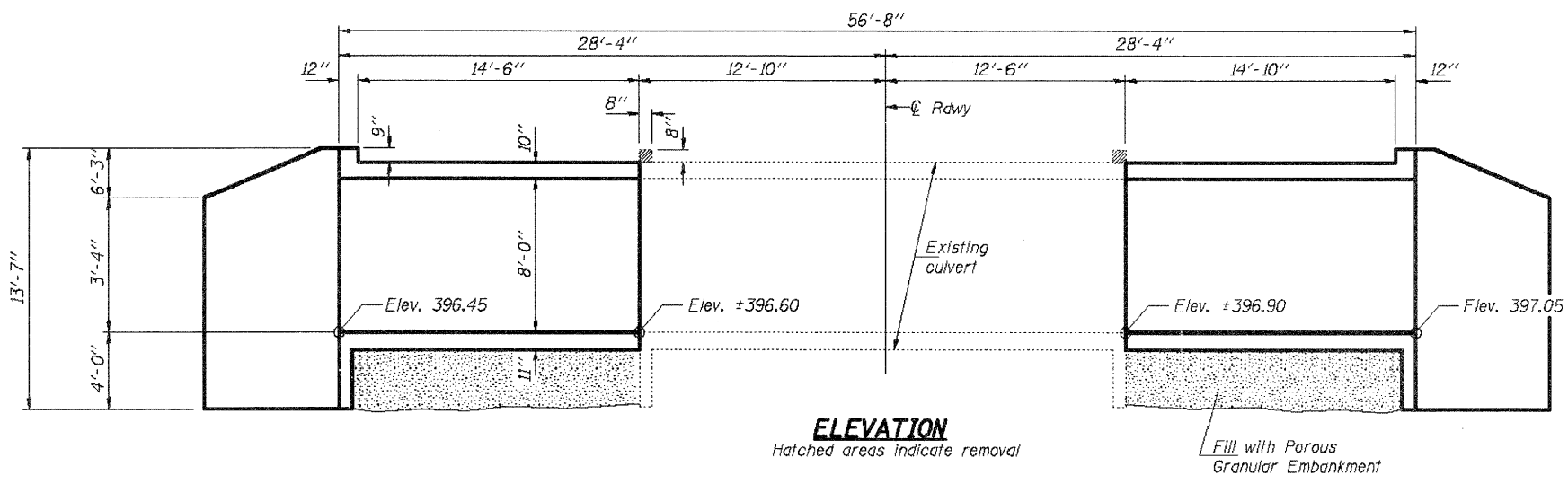
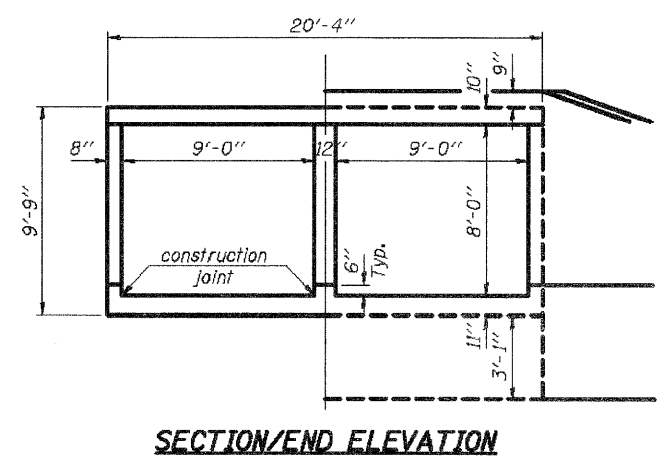
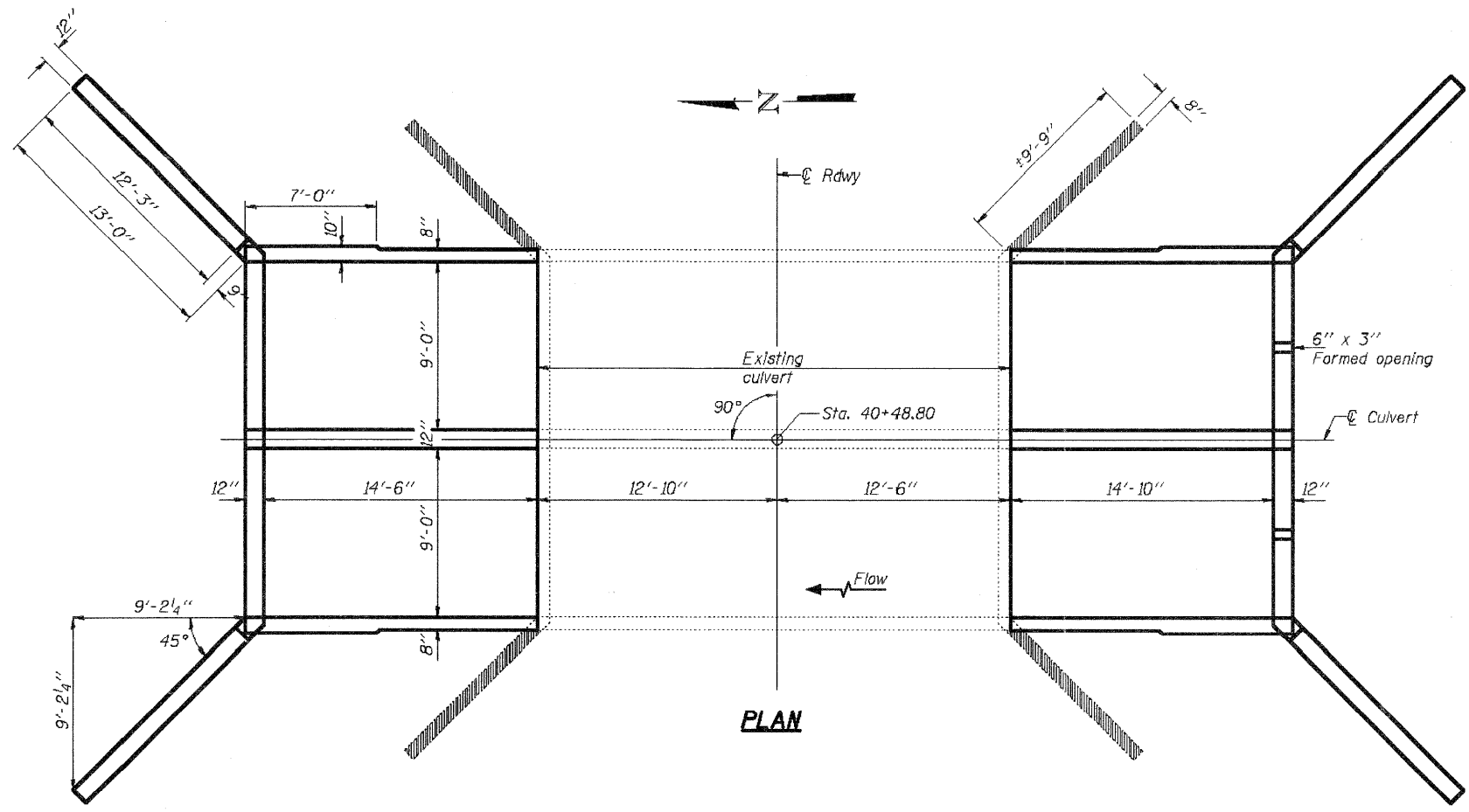


ROUTE	SECTION	COUNTY	TOWNSHIP	TOTAL SHEETS	SHEET NUMBER
FAS 1819	D6-0044-00-WR	JACKSON	MAKANDA	91	83
JOB NO. C-99-579-06			PROJECT NO. SR-1991063		
BOSKYDELL ROAD			CONTRACT NO. 99336		



GENERAL NOTES

Reinforcement bars shall conform to the requirements of ASTM A 706 Gr 60. See Special Provisions.
 Reinforcement bars designated (E) shall be epoxy coated.
 Plan dimensions and details relative to existing plans are subject to nominal construction variations. The Contractor shall field verify existing dimensions and details affecting new construction and make necessary approved adjustments prior to construction or ordering of materials. Such variations shall not be cause for additional compensation for a change in scope of the work, however, the Contractor will be paid for the quantity actually furnished at the unit price bid for the work.
 Exposed edges shall have a 3/4" chamfer.



DESIGN STRESSES

FIELD UNITS
 $f'_c = 3,500$ psi
 $f_y = 60,000$ psi (Reinforcement)

LOADING HL-93

Allow 50#/sq. ft. for future wearing surface.

DESIGN SPECIFICATIONS

2007 AASHTO LRFD Bridge Design Specifications with 2008 Interims

TOTAL BILL OF MATERIAL

ITEM	UNIT	TOTAL
Concrete Box Culverts	Cu. Yd.	89.3
Reinforcement Bars	Pound	11860
Concrete Removal	Cu. Yd.	10.3
Porous Granular Embankment	Cu. Yd.	115
Expansion Bolts, 3/4" x 12"	Each	82

