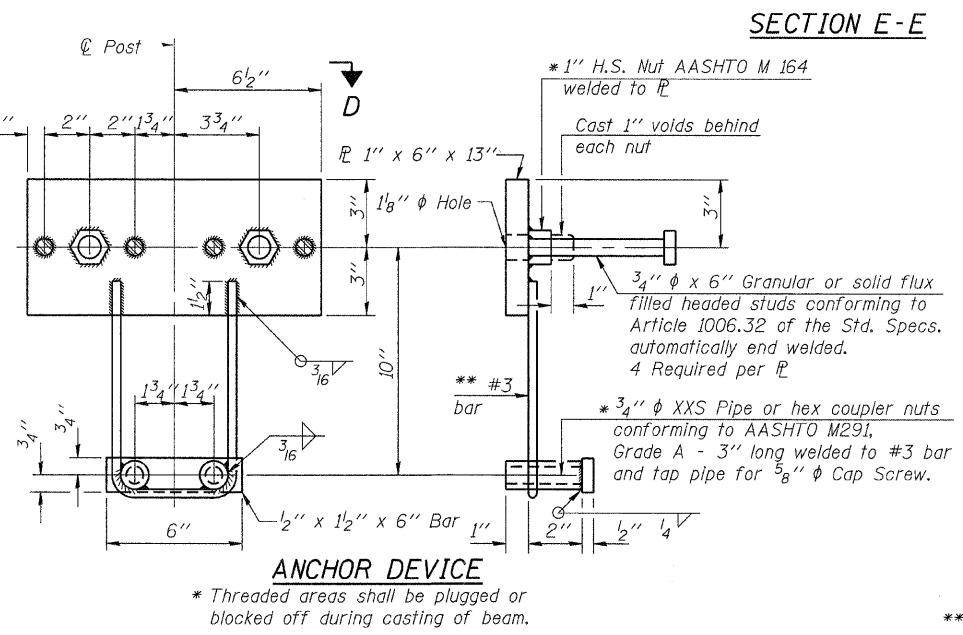
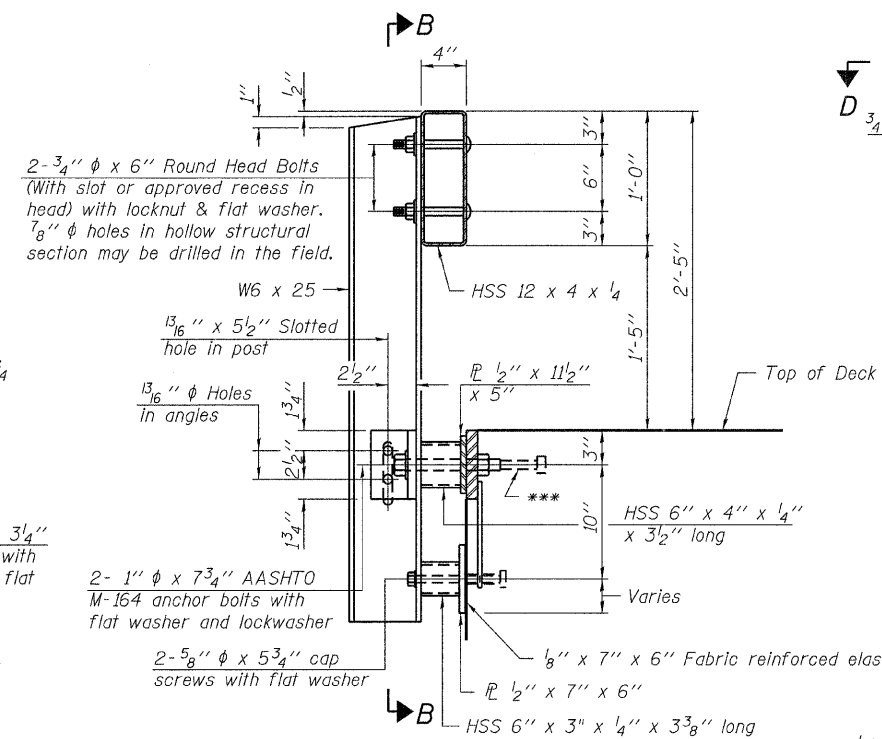
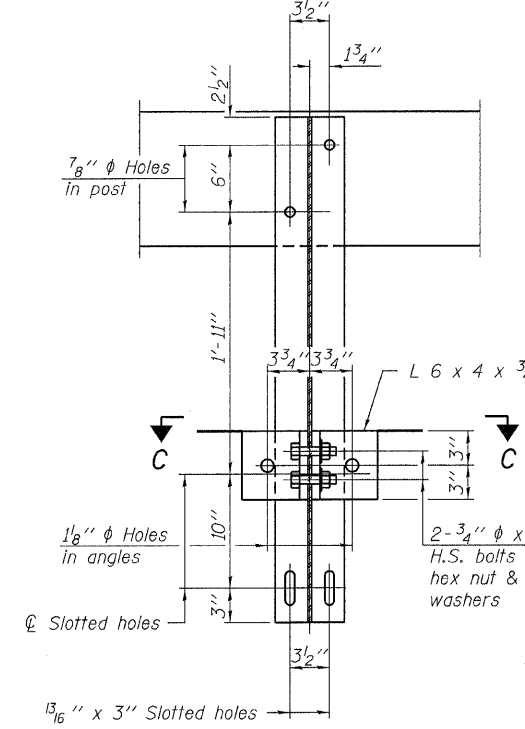
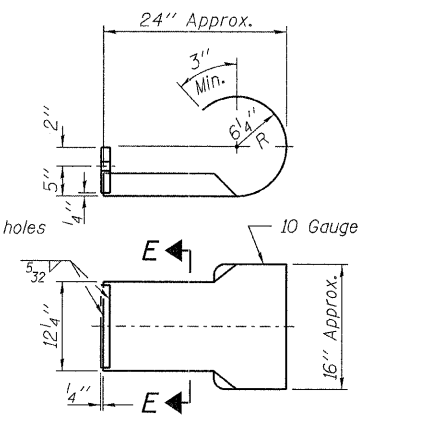
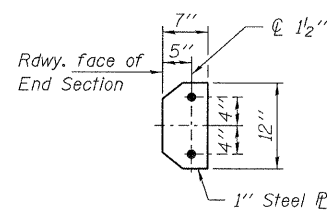
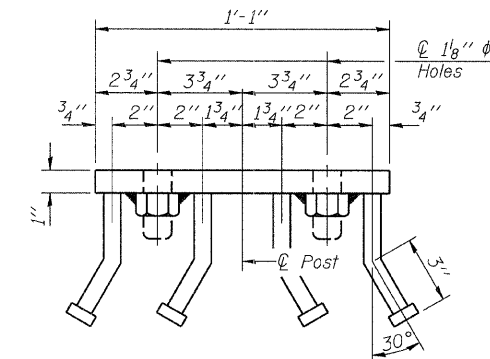
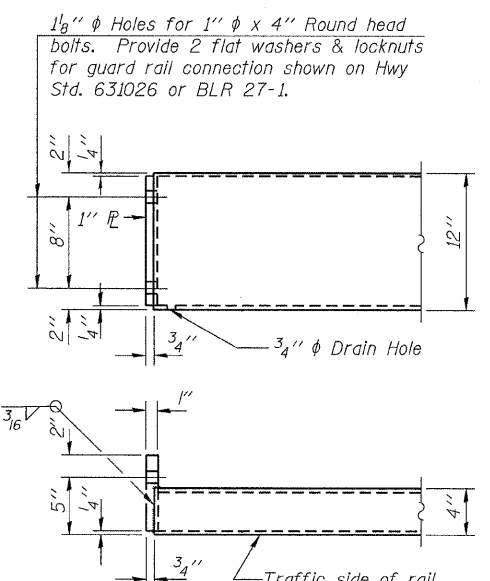
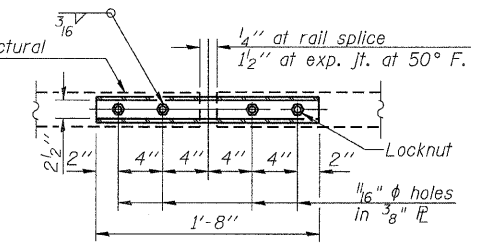
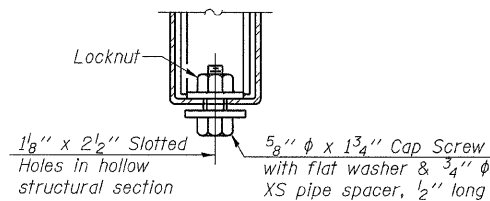
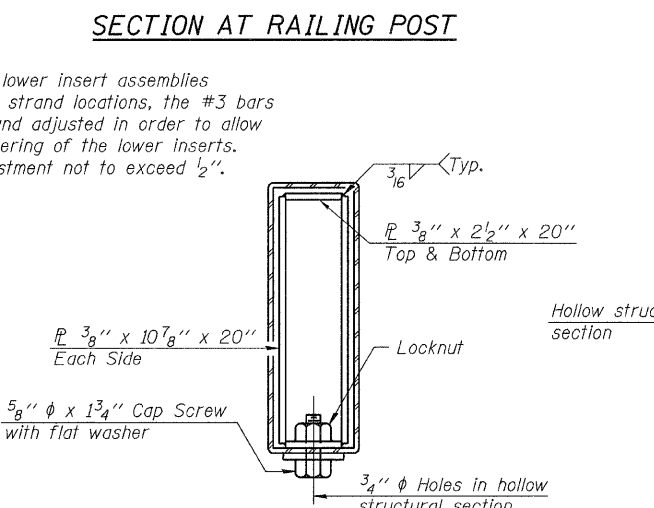
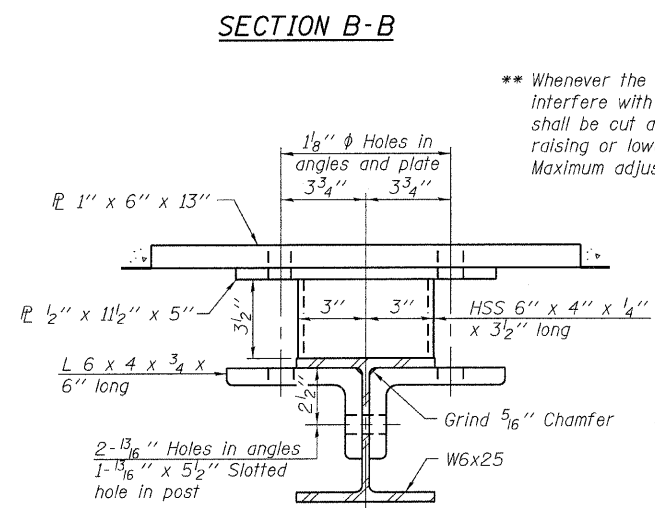


Note: Cost of curled end sections shall be included with the Steel Railing. (4 Required)



Notes:
 All field drilled holes shall be coated with an approved zinc rich paint before erection.
 For multi-span bridges, sufficient 1/4\"/>



R-23A 7-1-10 (10'-9\"/>

FILE NAME =	USER NAME =	DESIGNED - A.S.L.	REVISED - 08/30/10
HAMPTON, LENZINI AND RENWICK, INC.		CHECKED - S.W.M.	REVISED -
3088 STEVENSON DRIVE, SUITE 201 SPRINGFIELD, ILLINOIS 62703	PLOT SCALE =	DRAWN - D.T.M.	REVISED -
ILLINOIS PROFESSIONAL DESIGN FIRM L.S./P.E./S.E. CORP. 184.000998	PLOT DATE = 10/7/2011	CHECKED - S.W.M.	REVISED -

STATE OF ILLINOIS
 WHITE COUNTY HIGHWAY DEPARTMENT

STEEL RAILING, TYPE S1
 STRUCTURE NO. 097-3270
 SHEET NO. 5 OF 8 SHEETS

BILL OF MATERIAL				
Item	Unit	Quantity	TOTAL SHEETS	SHEET NO.
Steel Railing, Type S-1	Foot	135	112	9
MILL SHOALS ROAD DISTRICT CONTRACT NO. 99445				ILLINOIS FED. AID PROJECT