

CAIRO REGIONAL AIRPORT

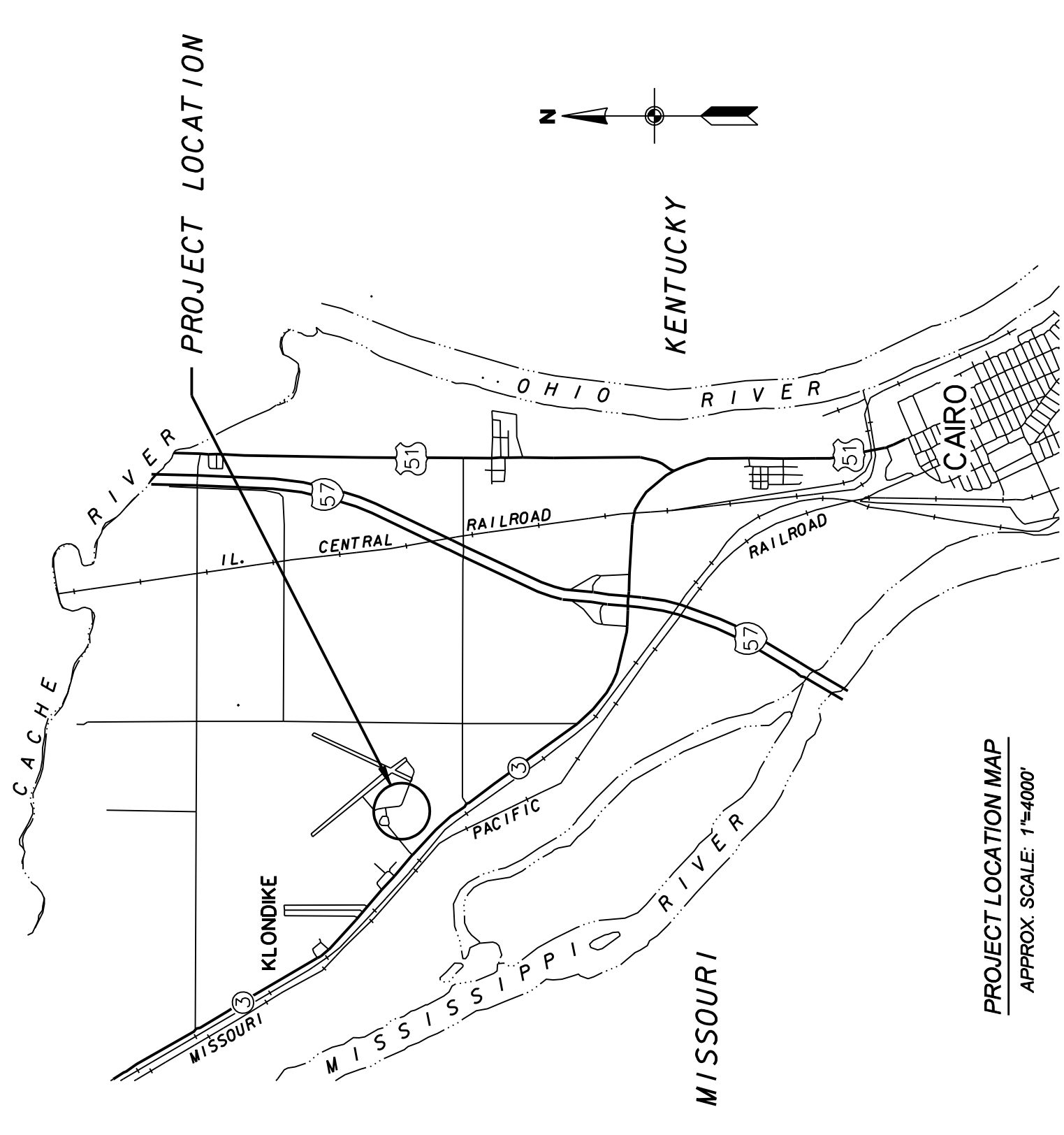
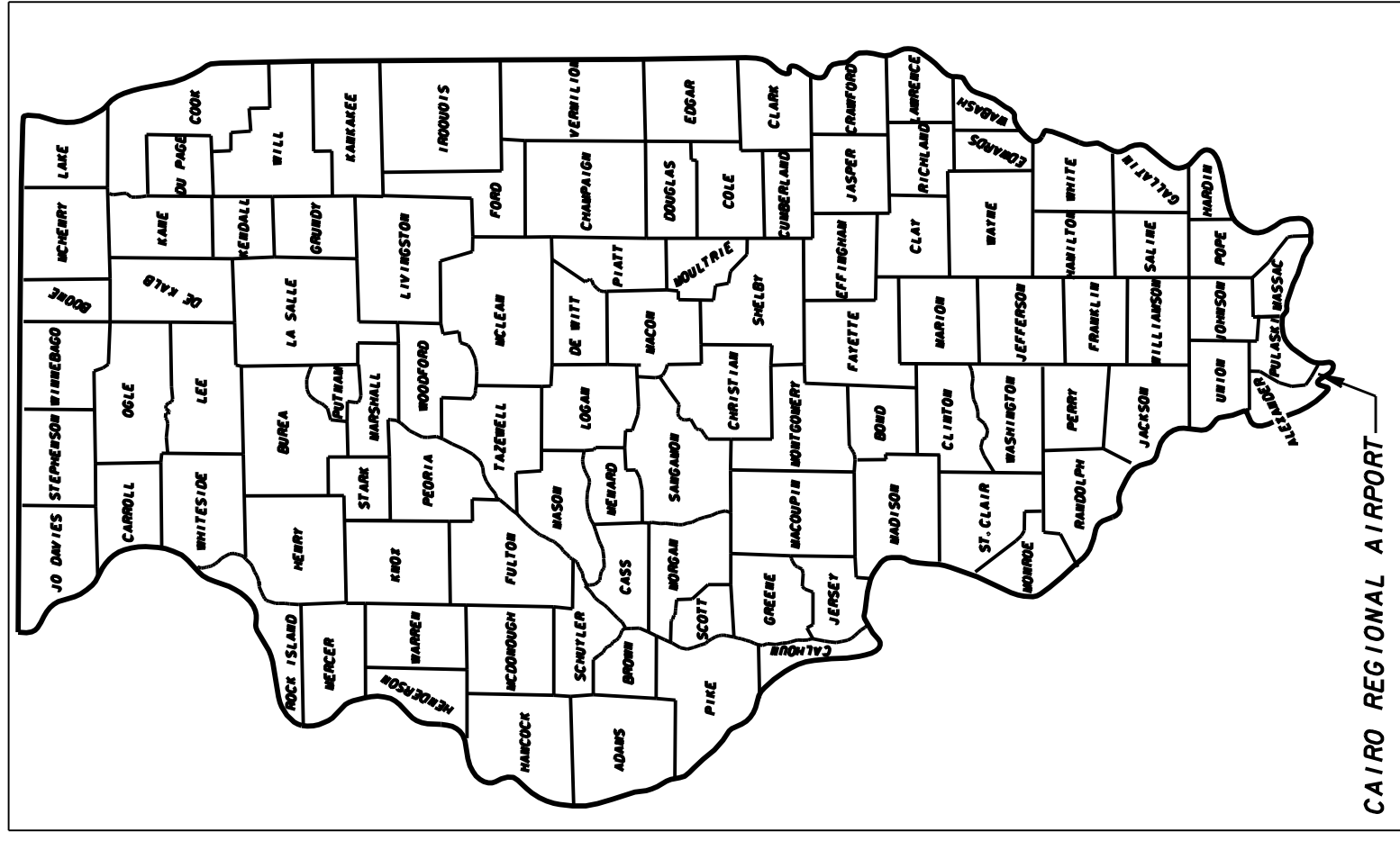
CAIRO - ALEXANDER COUNTY, ILLINOIS

AIRPORT TYPE: BASIC UTILITY

T-HANGAR SITE WORK

ILLINOIS PROJECT NO. CIR-3963
A.I.P. PROJECT NO. 3-17-0007-B12

LATITUDE 37°03'52"
LONGITUDE 89°13'04"
ELEVATION 321 MSL



DATE OF PLANS: NOVEMBER 2011

ALEXANDER COUNTY
AIRPORT AUTHORITY

APPROVED: *[Signature]* INTERIM CHAIRMAN
DATE: Nov 5 2011

APPROVED: *[Signature]* SECRETARY
DATE: 11/9 2011

PREPARED BY
J. T. BLANKINSHIP, INC.

CONSULTING ENGINEERS
MURPHYSBORO, ILLINOIS

APPROVED: *[Signature]*
DATE: November 8 2011



(SEAL)
TED R. BEGGS
REG. NO. 062-053736
EXPIRES 11-30-13

GENERAL NOTES

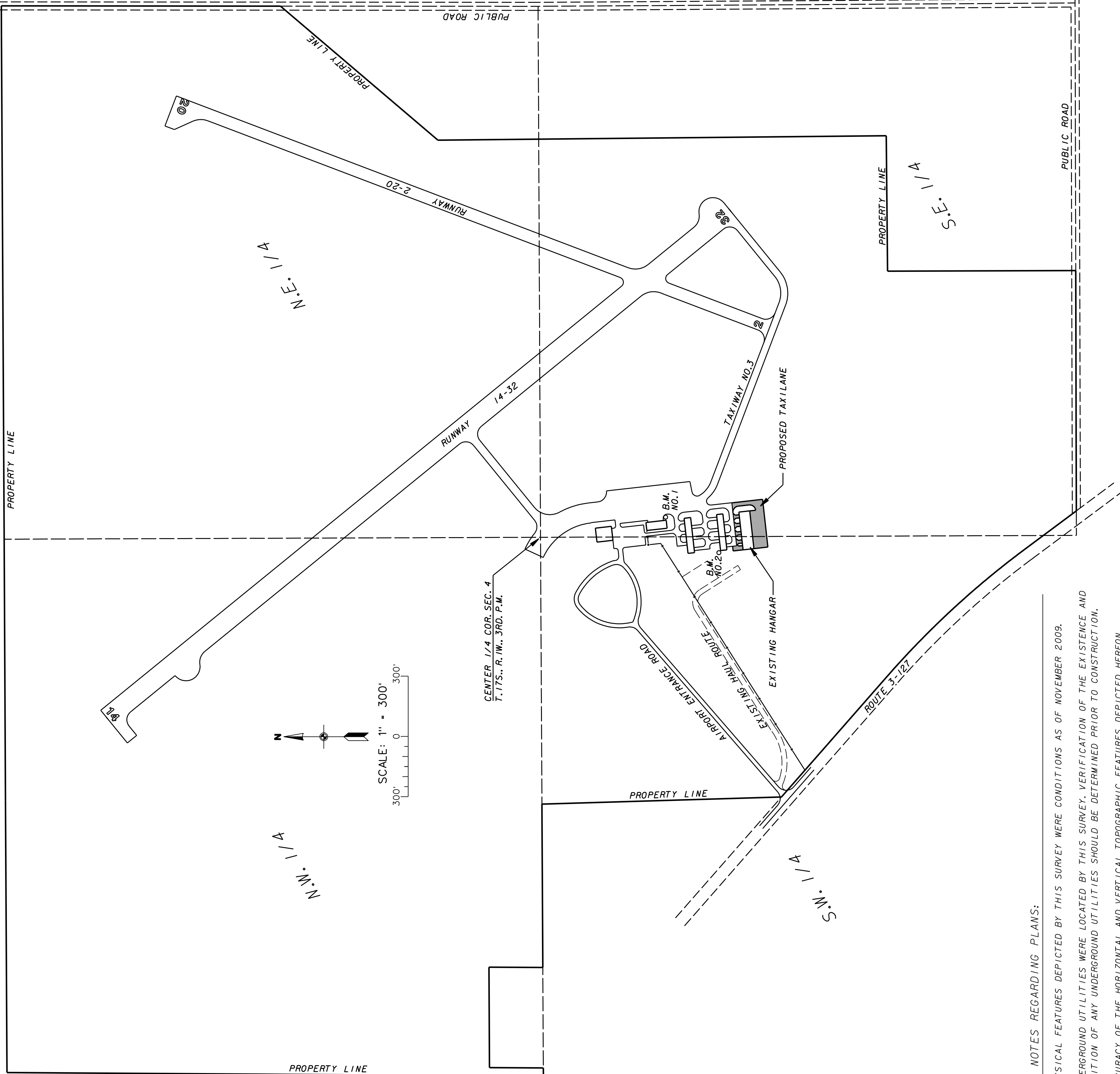
ENGINEER'S FIELD OFFICE
AN ENGINEER'S FIELD OFFICE WILL NOT BE REQUIRED FOR THIS PROJECT

SUMMARY OF QUANTITIES

BASE BID			
ITEM NO.	DESCRIPTION	UNIT	TOTAL QUANTITIES
ART52410	UNCLASSIFIED EXCAVATION	CUBIC YARD	470
ART52442	OFFSITE BORROW EXCAVATION	CUBIC YARD	3,540
ART56512	BALES	EACH	36
AR2208510	CRUSHED AGGREGATE BASE COURSE	TON	720
AR401610	BITUMINOUS SURFACE COURSE	TON	115
AR501506	6" PCC PAVEMENT	SQUARE YARD	1,449
AR602510	BITUMINOUS PRIME COAT	GALLON	310
AR701012	12" PVC STORM SEWER	LINEAR FOOT	206
AR751410	INLET	EACH	5
AR800602	HAUL ROUTE REMOVAL	LUMP SUM	1
AR800603	SILT FENCE REMOVAL	LINEAR FOOT	1,255
AR801310	SEEDING	ACRE	1.15
AR808510	MULCHING	ACRE	1.15
			AS BUILT QUANTITIES

INDEX OF SHEETS

SHEET NO.	DESCRIPTION
1	TITLE, COVER & SIGNATURE SHEET AND PROJECT LOCATION MAP
2	INDEX OF SHEETS, SUMMARY OF QUANTITIES, GENERAL NOTES AND SITE LOCATION MAP
3	SAFETY PLAN
4	TYPICAL SECTIONS, INLET DETAILS AND PCC PAVEMENT JOINT AND THICKENED EDGE DETAILS
5	LAYOUT PLAN
6	GRADING AND STORM SEWER PLAN
7	STORM WATER POLLUTION PREVENTION PLAN



SITE LOCATION MAP

GENERAL NOTES REGARDING PLANS:

- ALL PHYSICAL FEATURES DEPICTED BY THIS SURVEY WERE CONDITIONS AS OF NOVEMBER 2009.
- NO UNDERGROUND UTILITIES WERE LOCATED BY THIS SURVEY. VERIFICATION OF THE EXISTENCE AND POSITION OF ANY UNDERGROUND UTILITIES SHOULD BE DETERMINED PRIOR TO CONSTRUCTION.
- THE ACCURACY OF THE HORIZONTAL AND VERTICAL TOPOGRAPHIC FEATURES DEPICTED HEREON WERE DERIVED BY SURVEY METHODS THAT EXCEED THE ACCURACY OF THE PLOTTED DOCUMENT AS DEFINED BY THE MAP SCALE. THE USE OF THIS SURVEY INFORMATION IN A DIGITAL ENVIRONMENT, CADD OR GIS SHALL NOT BE RELIED UPON TO AN ACCURACY GREATER THAN THAT OF THE MAP SCALE.
- FOR CONSTRUCTION LAYOUT PURPOSES THE POSITION OF ALL PROPOSED IMPROVEMENTS ESTABLISHED FOR THIS PROJECT SHALL BE DEVELOPED FROM INFORMATION SHOWN ON THE PLOTTED DOCUMENT AND SHALL NOT BE DERIVED FROM INFORMATION OBTAINED FROM A DIGITAL ENVIRONMENT UNLESS OTHERWISE VERIFIED.
- HORIZONTAL DATUM IS ILLINOIS STATE PLAN WEST ZONE (NAD83)
- VERTICAL DATUM IS CAIRO AIRPORT DATUM - (INGV029)

- B E N C H M A R K S
- B.M. NO. 1 - HEADBOLT NEXT TO "O" IN OPEN ON FLUSH HYDRANT
9'S.E. OF S.E. CORNER OF HANGAR/SHOP. (ELEV. - 321.05)
- B.M. NO. 2 - TOP NORTH R.I.M. INLET, NO. 11, +25' NORTH OF N.W. CORNER OF SOUTH T-HANGAR. (ELEV. - 316.68)

CAIRO REGIONAL AIRPORT
ALEXANDER COUNTY, ILLINOIS
ILLINOIS PROJECT NO. CIR-3963
A.I.P. PROJECT NO. 3-17-0007-B12

T-HANGAR SITE WORK

INDEX OF SHEETS, SUMMARY OF QUANTITIES,
GENERAL NOTES AND SITE LOCATION MAP

SCALE	1"=300'	FILE NO.	E-9328
DATE	NOV. 2011	DESIGN	2 OF 7
DRAWN BY	SDB	ESTIMATED	

J. T. BLANKINSHIP, INC.
CONSULTING ENGINEERS & LAND SURVEYORS
ILLINOIS PROFESSIONAL DESIGN FIRM NO. 1394
P.O. BOX 40 - 401 S. 17TH STREET - MURPHYSBORO, ILLINOIS 62866 - PHONE 618-651-1771

PROPOSED SAFETY PLAN

ALL PROVISIONS OF THE LATEST EDITION OF FAA ADVISORY CIRCULAR 150/5370-2, "OPERATIONAL SAFETY ON AIRPORTS DURING CONSTRUCTION" APPLY TO THIS CONTRACT, EXCEPT AS MODIFIED BY THIS SAFETY PLAN, OR AS MODIFIED BY THE CAIRO REGIONAL AIRPORT AT THE PRECONSTRUCTION CONFERENCE OR DURING THE COURSE OF THE CONTRACT.

GENERAL - THE CAIRO REGIONAL AIRPORT IS COMPRISED OF 2 PAVED RUNWAYS AND THE ASSOCIATED TAXIWAY SYSTEM.

THE PROPOSED PROJECT WILL NOT REQUIRE THE CLOSING OF ANY AIRFIELD OPERATIONS FOR THE DURATION OF THE WORK. THE CONTRACTOR WILL BE REQUIRED TO SUBMIT TO THE RESIDENT ENGINEER, FOR APPROVAL BY THE AIRPORT MANAGER, A SCHEDULE OF CONSTRUCTION ACTIVITIES PRIOR TO THE START OF CONSTRUCTION. THE CONTRACTOR IS REQUIRED TO NOTIFY THE AIRPORT MANAGER THROUGH THE RESIDENT ENGINEER, A MINIMUM OF 7 DAYS PRIOR TO THE START OF CONSTRUCTION.

HAUL ROUTE AND PARKING AREA (EXISTING)

THE CONTRACTOR WILL USE THE DESIGNATED HAUL ROUTE AND PARKING AREA AS SHOWN ON THIS SHEET AND IN ACCORDANCE WITH THE SPECIAL PROVISIONS. THE CONTRACTOR WILL BE REQUIRED TO MAINTAIN THE EXISTING HAUL ROUTE AND PARKING AREA THROUGHOUT THE COURSE OF THE PROJECT. ANY AREAS DAMAGED OUTSIDE OF THESE AREAS WILL BE REPAIRED BY THE CONTRACTOR AND AT THE CONTRACTOR'S OWN EXPENSE. AT THE CONCLUSION OF THE PROJECT THE CONTRACTOR WILL REMOVE THE HAUL ROUTE AND PARKING AREA MATERIAL AND RESTORE THESE AREAS TO THEIR ORIGINAL STATE. CONSTRUCTION, MAINTENANCE, AND ANY REQUIRED RESTORATION OF THE HAUL ROUTE AND PARKING AREA, INCLUDING LABOR, MATERIALS, EQUIPMENT, AND OTHER INCIDENTAL ITEMS WILL BE CONSIDERED INCIDENTAL TO THE PROJECT AND NO ADDITIONAL COMPENSATION WILL BE ALLOWED.

HEIGHT OF CONSTRUCTION EQUIPMENT

THE MAXIMUM HEIGHT OF THE CONSTRUCTION EQUIPMENT WILL BE 30 FEET.

CONTRACTOR RESPONSIBILITIES

IDENTIFICATION - WHEN THE CONTRACTORS VEHICLES AND EQUIPMENT ARE ON THE AIRPORT PROPERTY THEY SHALL BE PROPERLY MARKED WITH THREE (3) FOOT SQUARE CHECKERED FLAGS (INTERNATIONAL ORANGE AND WHITE). THE CONTRACTOR WILL ALSO PROVIDE WORKERS WITH SOME TYPE OF TAG OR GARMENT TO IDENTIFY THE PERSON AS BEING PART OF THE CONSTRUCTION CREW.

RADIO CONTROL - THE CONTRACTOR WILL BE REQUIRED TO BE IN TWO-WAY RADIO CONTACT (122.80 MHz) WITH THE AIRPORT UNICOM. THIS WILL KEEP THE CONTRACTOR IN CONSTANT CONTACT WITH THE CAIRO REGIONAL AIRPORT AND ENABLE THE AIRPORT TO IMMEDIATELY CONTACT THE CONTRACTOR IN CASE OF AN AERONAUTICAL EMERGENCY THAT WOULD REQUIRE ACTION BY THE CONTRACTOR AND/OR HIS PERSONNEL.

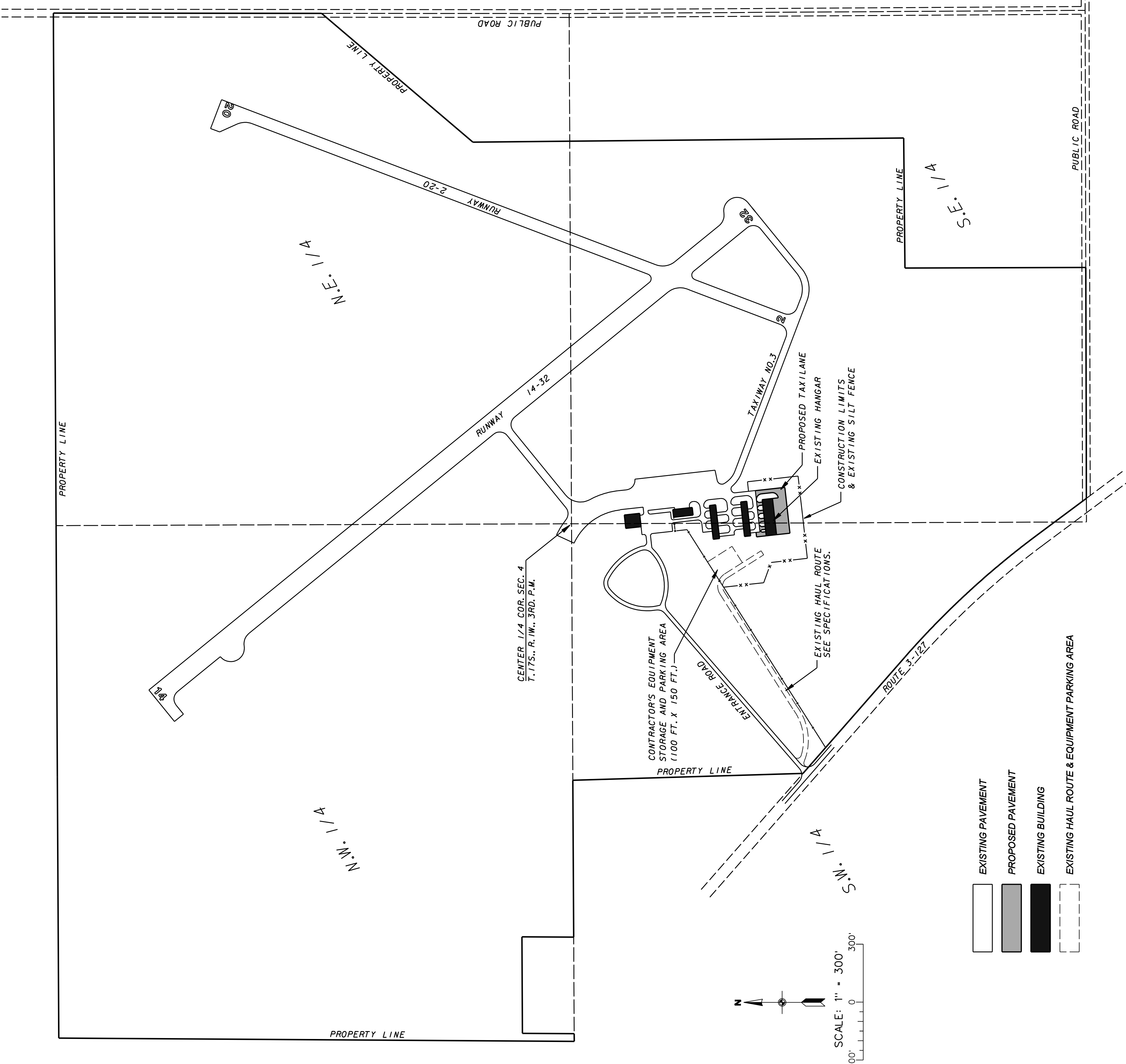
THE LOCATION OF THE CONTRACTOR'S EQUIPMENT PARKING AND STORAGE AREA IS SHOWN ON THIS SHEET. THE CONTRACTOR'S EMPLOYEES WILL PARK THEIR VEHICLES IN THIS AREA. ONLY CONTRACTOR VEHICLES WILL BE ALLOWED OUTSIDE THIS AREA.

THE CONTRACTOR AND HIS EMPLOYEES WILL BE RESTRICTED TO THE WORK AREA AND ALL OTHER AREAS OF THE AIRPORT ARE "OFF LIMITS" TO THEM.

ALL WORK PERFORMED SHALL BE DONE IN AN ORDERLY AND EFFECTIVE MANNER.

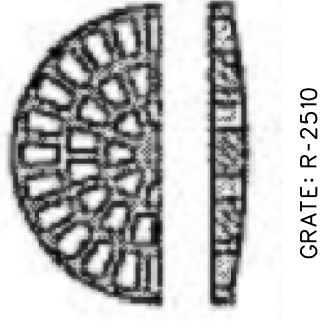
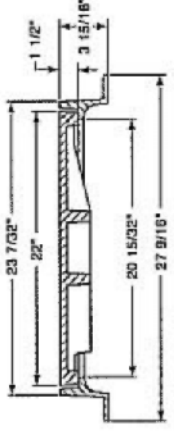
AIRPORT SECURITY NOTE

THE AIRPORT SPONSOR MAY PROVIDE ADDITIONAL GUIDANCE AND TRAINING FOR AIRPORT SECURITY MEASURES. AIRPORT SECURITY WILL BE MAINTAINED AT ALL TIMES. THE CONTRACTOR WILL CLOSE AND LOCK THE EXISTING GATE IN THE HAUL ROUTE AT THE END OF EACH WORKING DAY. ANY ACCESS GATES WILL BE CLOSED AT ALL TIMES WHEN NOT IN USE. IF CONTINUOUS HAULING IS REQUIRED, THEN THE GATE ACCESS WILL BE MONITORED TO PREVENT A BREACH FROM OUTSIDE, NON-CONSTRUCTION RELATED TRAFFIC.



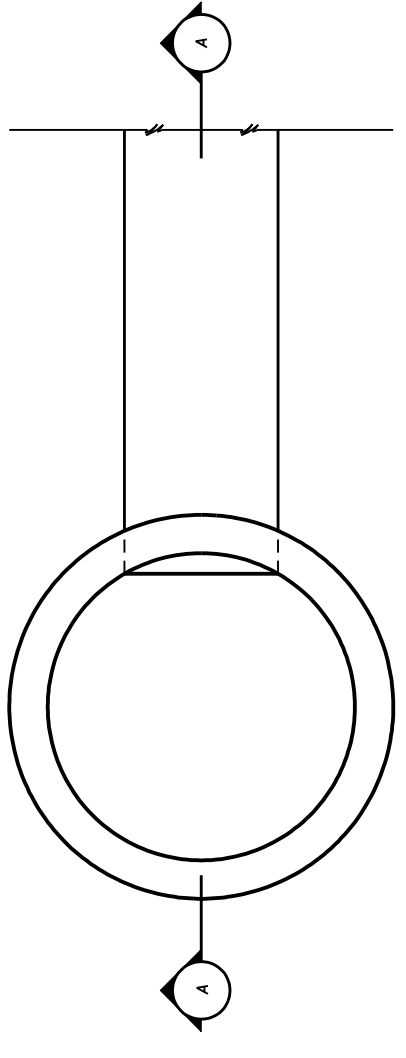
CAIRO REGIONAL AIRPORT	
ALEXANDER COUNTY, ILLINOIS	
ILLINOIS PROJECT NO. CIR-3963	
A.I.P. PROJECT NO. 3-17-0007-B12	
T-HANGAR SITE WORK	
SAFETY PLAN	
SCALE 1" = 300'	FILE NO. E-9328
DRAWN BY SDB	DESIGN FILE E-9328
DATE NOV 11	PROJECT NO. 3-17-0007
SHEET NO. 3 OF 7	
J. T. BLANKINSHIP, INC. CONSULTING ENGINEERS & LAND SURVEYORS ILLINOIS PROFESSIONAL DESIGN FIRM NO. 1394 P.O. BOX 40 - 401 S. 17TH STREET, MURPHYSBORO, ILLINOIS 62866 PHONE 618-683-1771	

R-1690-A
Manhole Frame
Heavy Duty



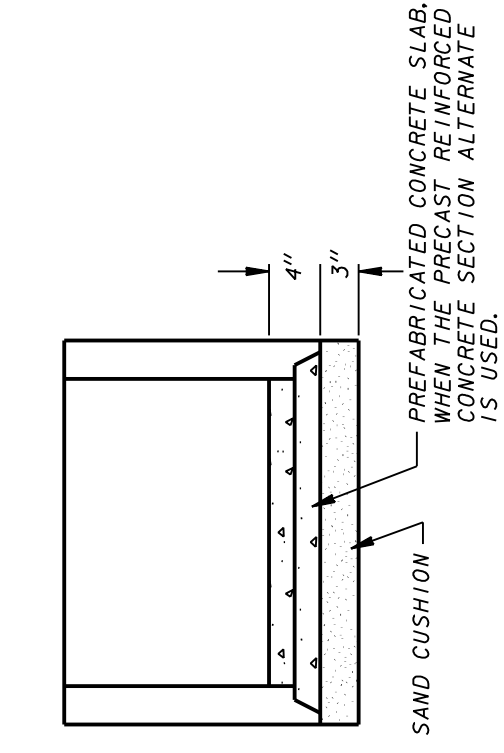
GRATE R-2510

INLET FRAME AND GRATE
MEENAH R-1690-A FRAME AND R-2510 GRATE OR EQUAL
NOT TO SCALE

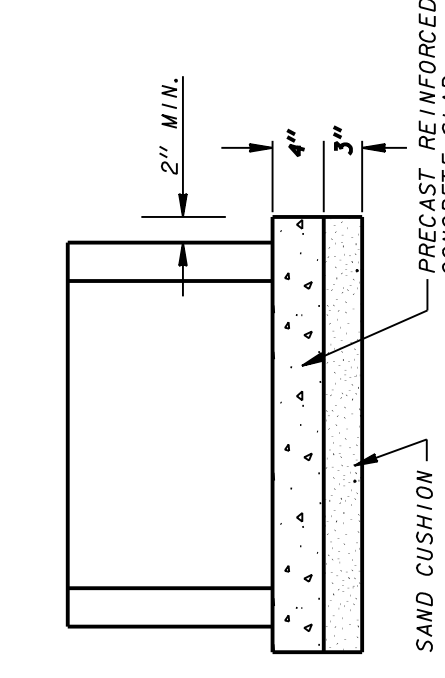


PLAN

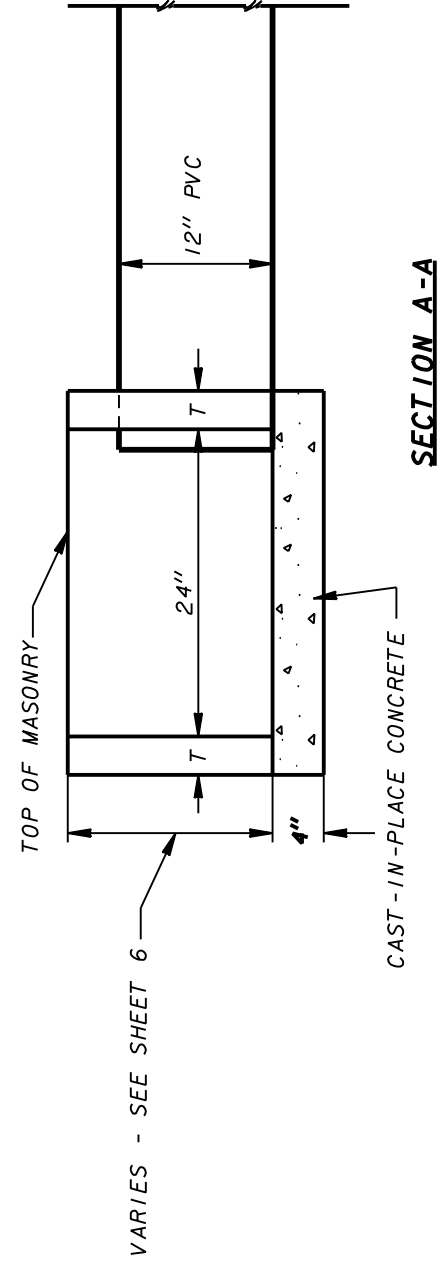
ALTERNATE MATERIALS FOR WALLS	T
BRICK MASONRY	8"
CAST-IN-PLACE CONCRETE	6"
CONCRETE MASONRY UNIT	5"
PRECAST REINFORCED CONCRETE SECTION	3"



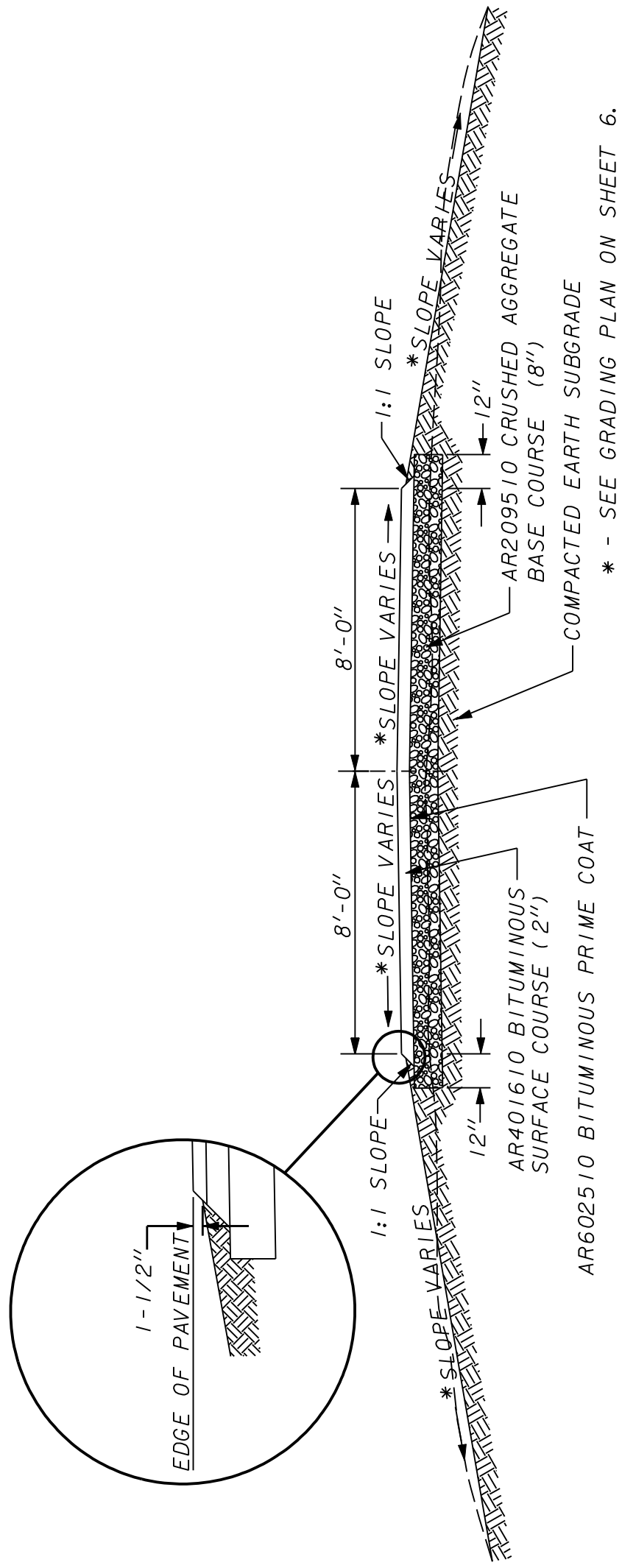
ALTERNATE METHODS



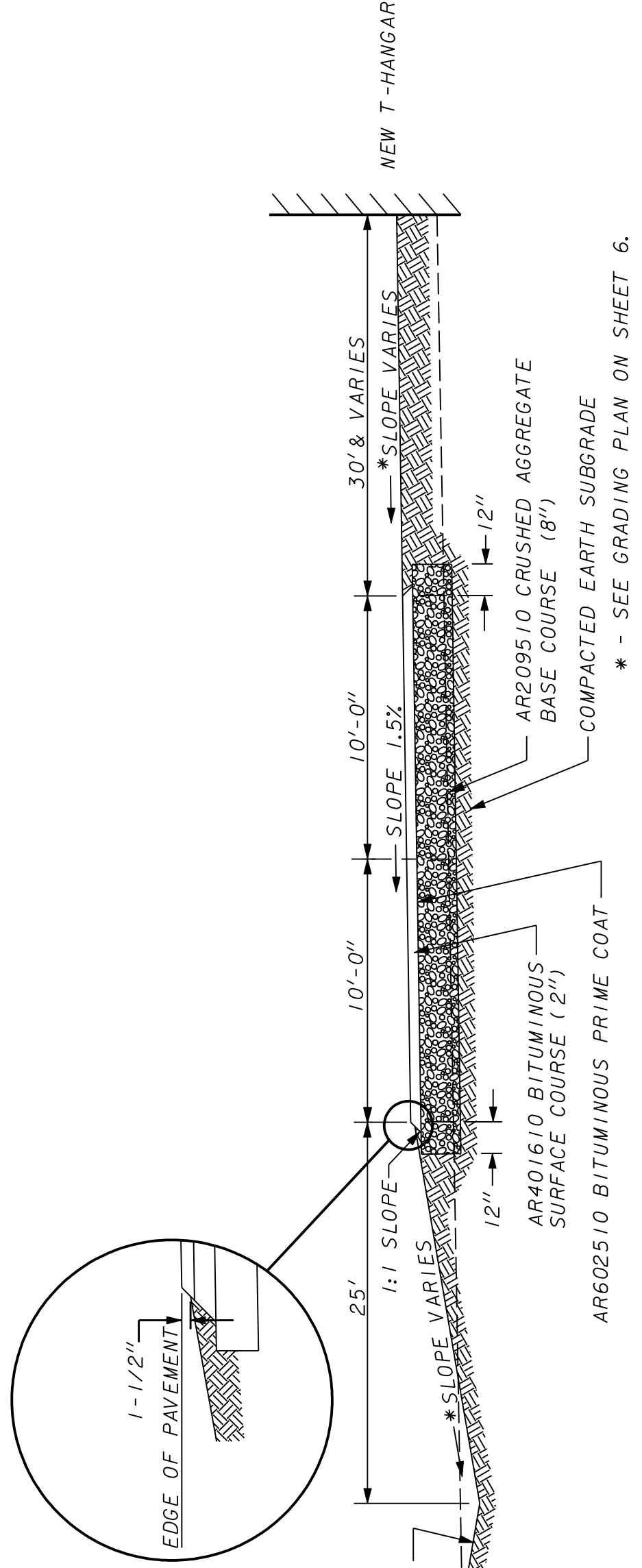
INLET DETAIL
NOT TO SCALE



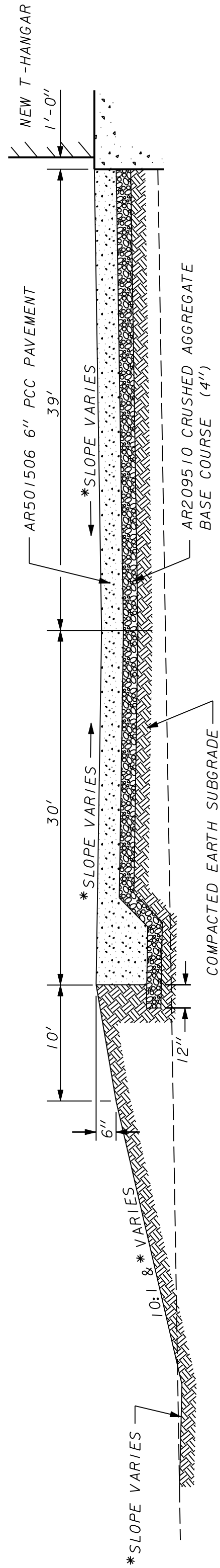
SECTION A-A



TYPICAL PAVEMENT SECTION
NORTH SIDE OF T-HANGAR
NOT TO SCALE

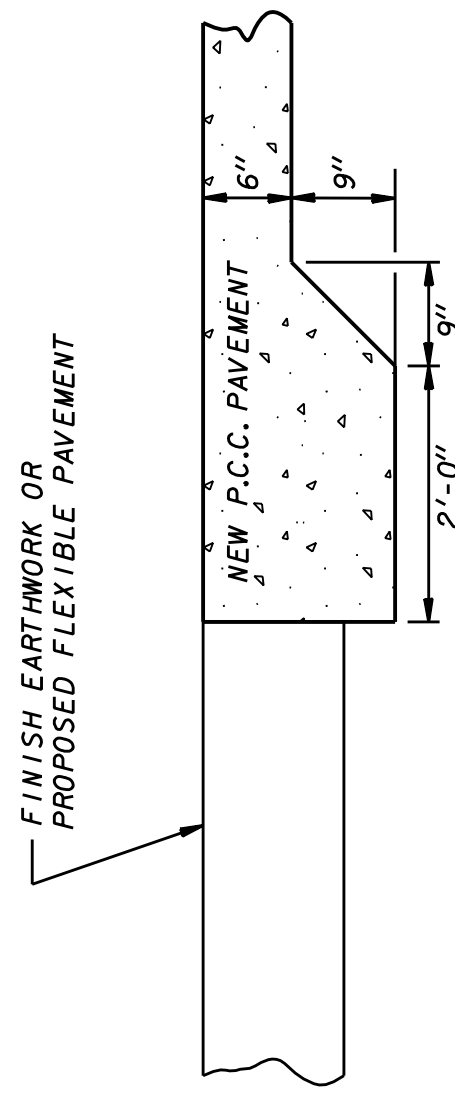


TYPICAL PAVEMENT SECTION
EAST SIDE OF T-HANGAR
NOT TO SCALE

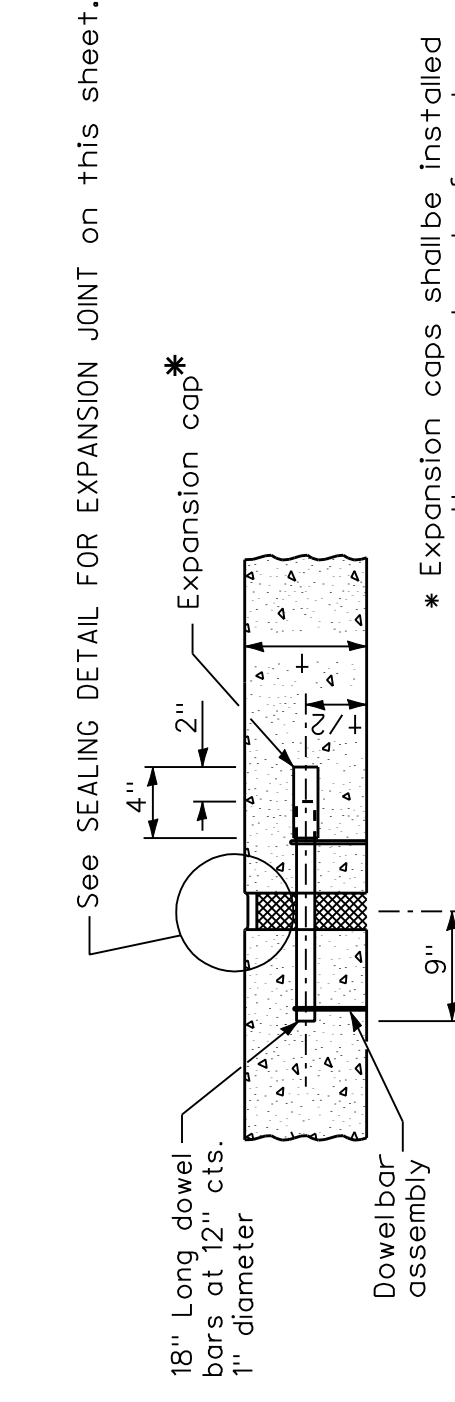


TYPICAL PAVEMENT SECTION
SOUTH SIDE OF T-HANGAR
NOT TO SCALE

FINISH EARTHWORK OR PROPOSED FLEXIBLE PAVEMENT

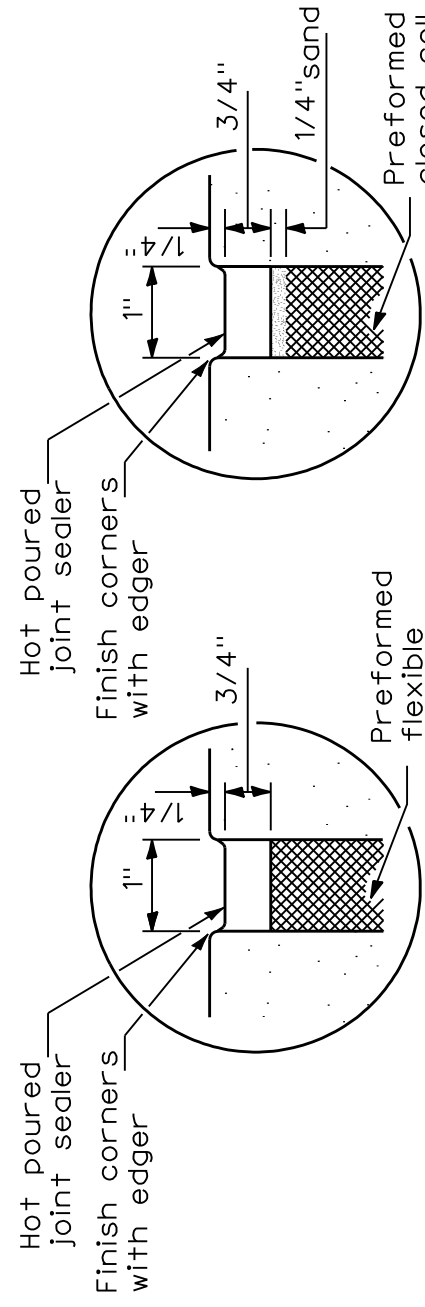


PCC PAVEMENT - THICKENED EDGE DETAIL
NOT TO SCALE
TO BE CONSTRUCTED ALONG PERIMETER OF PROPOSED PCC PAVEMENT ON ALL SIDES EXCEPT WHERE PAVEMENT ADJUTS T-HANGAR BUILDING PAD.



EXPANSION JOINT

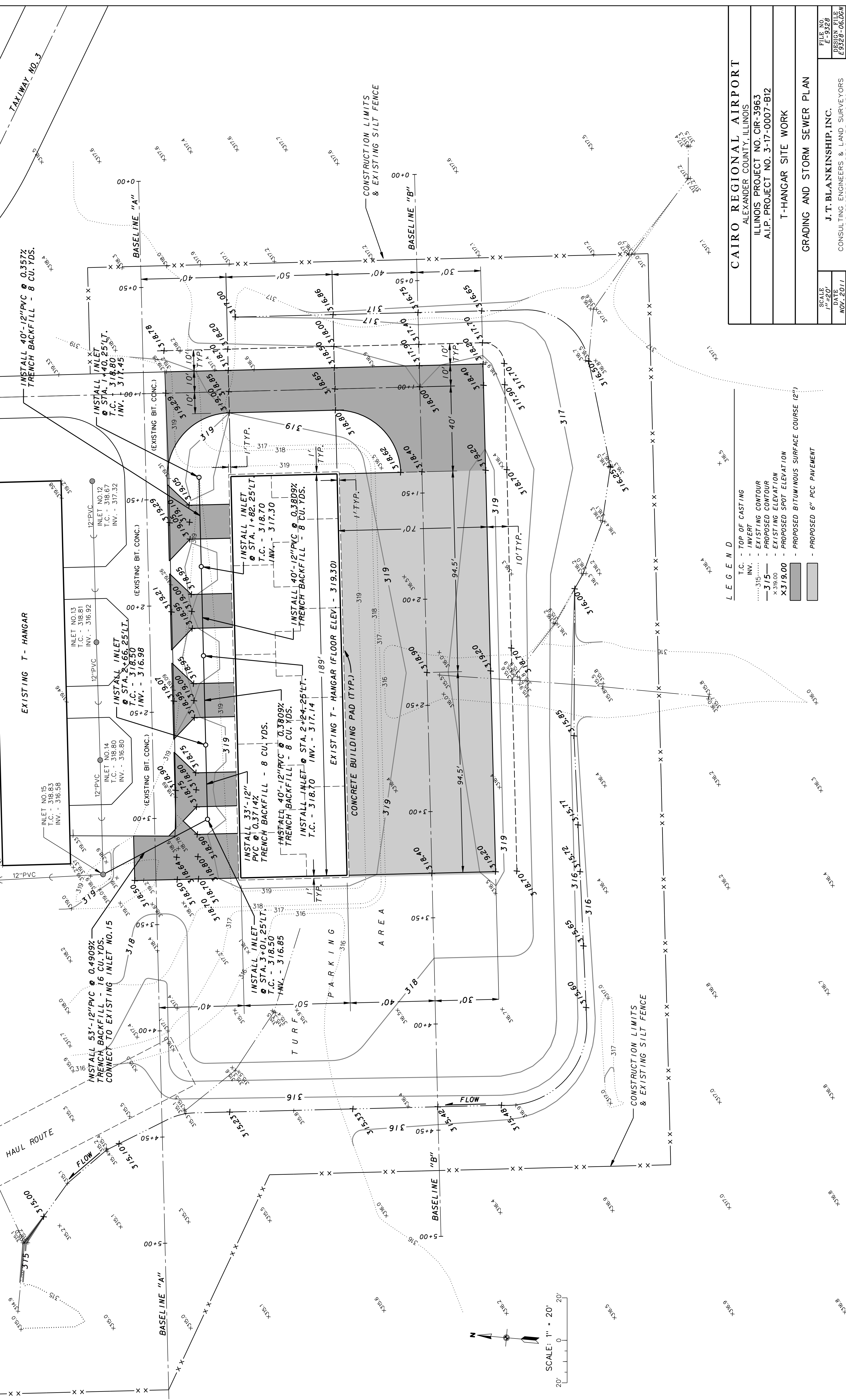
* Expansion caps shall be installed on the exposed end of each dowelbar once the header has been removed and the joint filler material has been installed.



SEALING DETAIL FOR EXPANSION JOINT

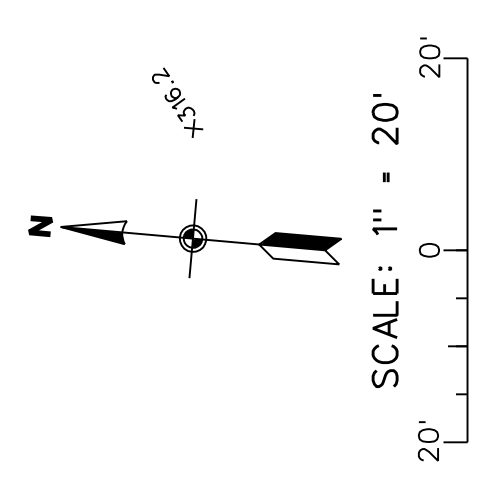
CAIRO REGIONAL AIRPORT ALEXANDER COUNTY, ILLINOIS ILLINOIS PROJECT NO. CIR-3963 A.I.P. PROJECT NO. 3-17-0007-B12	
T-HANGAR SITE WORK	
TYPICAL SECTIONS, INLET DETAILS AND TYPICAL PAVEMENT JOINT AND THICKENED EDGE DETAILS	
SCALE NOT TO SCALE	FILE NO. E-9328
DATE MAY 11	DESIGN FILE E-9328
DRAWN BY SDR	CHECKED BY SDR
J. T. BLANKINSHIP, INC. CONSULTING ENGINEERS & LAND SURVEYORS ILLINOIS PROFESSIONAL DESIGN FIRM NO. 1394 P.O. BOX 40 401 S. 17TH STREET MURPHYSBORO, ILLINOIS 62866 PHONE 815-831-1771	

BENCH MARKS
B.M. NO. 1 - HEADBOLT NEXT TO "0" IN OPEN ON FLUSH HYDRANT
9' S.E. OF S.E. CORNER OF HANGAR/SHOP. (ELEV. - 321.05)
B.M. NO. 2 - TOP NORTH RIM INLET NO. 11. ±25' NORTH OF N.W. CORNER OF
SOUTH T-HANGAR. (ELEV. - 318.68)



LEGEND

T.C. - TOP OF CASTING
INV. - INVERT
--- 315 --- - EXISTING CONTOUR
--- 315 --- - PROPOSED CONTOUR
X 319.00 - EXISTING SPOT ELEVATION
X 319.00 - PROPOSED SPOT ELEVATION
[Shaded Area] - PROPOSED BITUMINOUS SURFACE COURSE (2")
[Shaded Area] - PROPOSED 6" PCC PAVEMENT



CAIRO REGIONAL AIRPORT
ALEXANDER COUNTY, ILLINOIS
ILLINOIS PROJECT NO. CIR-3963
A.I.P. PROJECT NO. 3-17-0007-B12


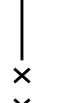


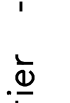

T-HANGAR SITE WORK

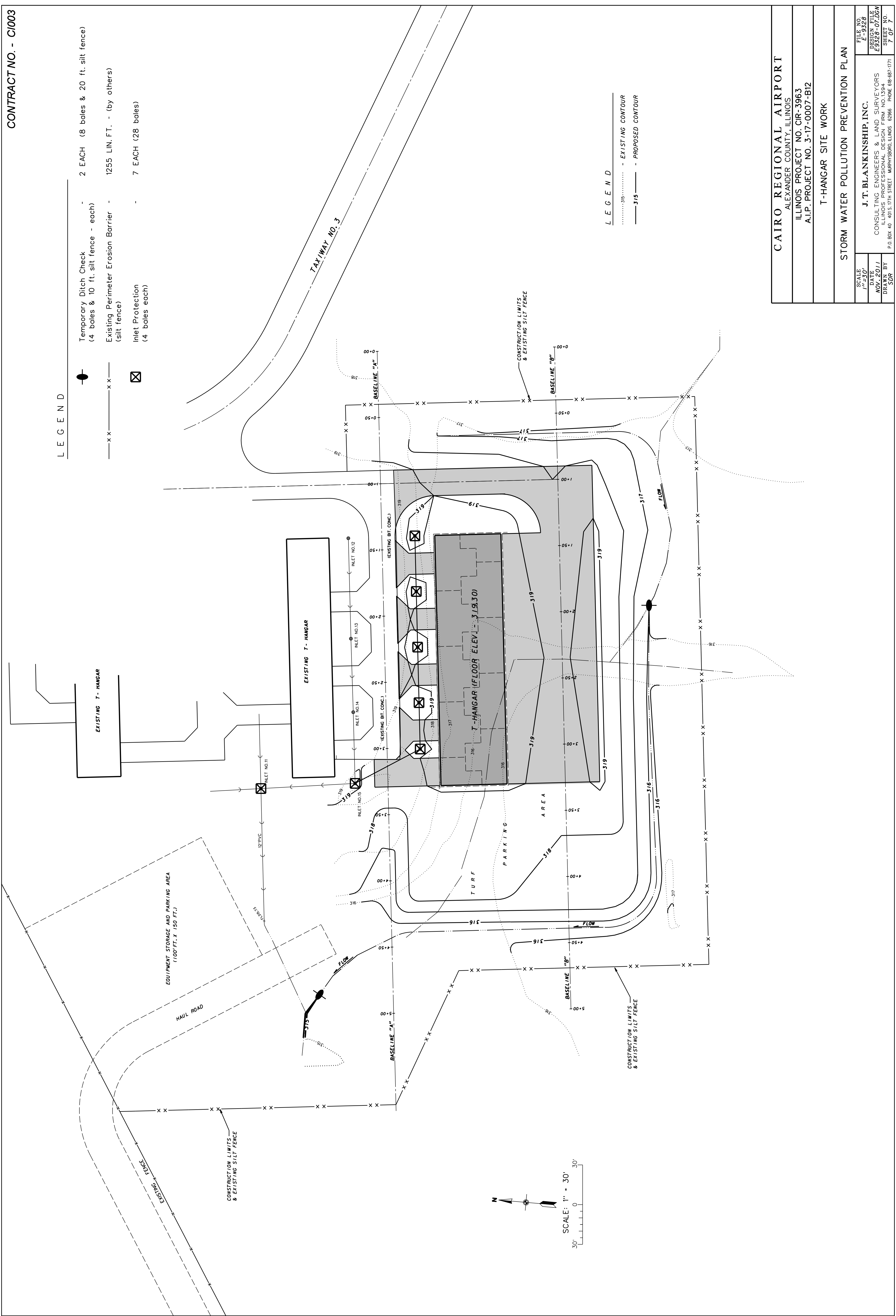
GRADING AND STORM SEWER PLAN

SCALE: 1" = 20'
DATE: NOV. 2011
DRAWN BY: [Name]
JOB NO.: [Number]
SHEET NO.: 8 OF 7

J. T. BLANKINSHIP, INC.
CONSULTING ENGINEERS & LAND SURVEYORS
ILLINOIS PROFESSIONAL DESIGN FIRM NO. 1394
P.O. BOX 40 - 401 S. 17TH STREET - MURPHYSBORO, ILLINOIS 62866 - PHONE 618-683-1771

LEGEND

- 
 Temporary Ditch Check
 (4 bales & 10 ft. silt fence - each)
- 
 Existing Perimeter Erosion Barrier
 (silt fence)
- 
 Inlet Protection
 (4 bales each)
- 
 2 EACH (8 bales & 20 ft. silt fence)
- 
 1255 LIN. FT. - (by others)
- 
 7 EACH (28 bales)



LEGEND
315..... - EXISTING CONTOUR
 ———315——— - PROPOSED CONTOUR

CAIRO REGIONAL AIRPORT	
ALEXANDER COUNTY, ILLINOIS	
ILLINOIS PROJECT NO. CIR-3963	
A.I.P. PROJECT NO. 3-17-0007-B12	
T-HANGAR SITE WORK	
STORM WATER POLLUTION PREVENTION PLAN	
SCALE 1"=30'	FILE NO. E-9328
DATE NOV. 2011	DESIGN FILE E-9328
DRAWN BY SDR	ESTIMATED SHEET NO. 7 OF 7
J. T. BLANKINSHIP, INC. CONSULTING ENGINEERS & LAND SURVEYORS ILLINOIS PROFESSIONAL DESIGN FIRM NO. 1394 P.O. BOX 40 - 401 S. 17TH STREET - MURPHYSBORO, ILLINOIS 62866 - PHONE 618-683-1771	