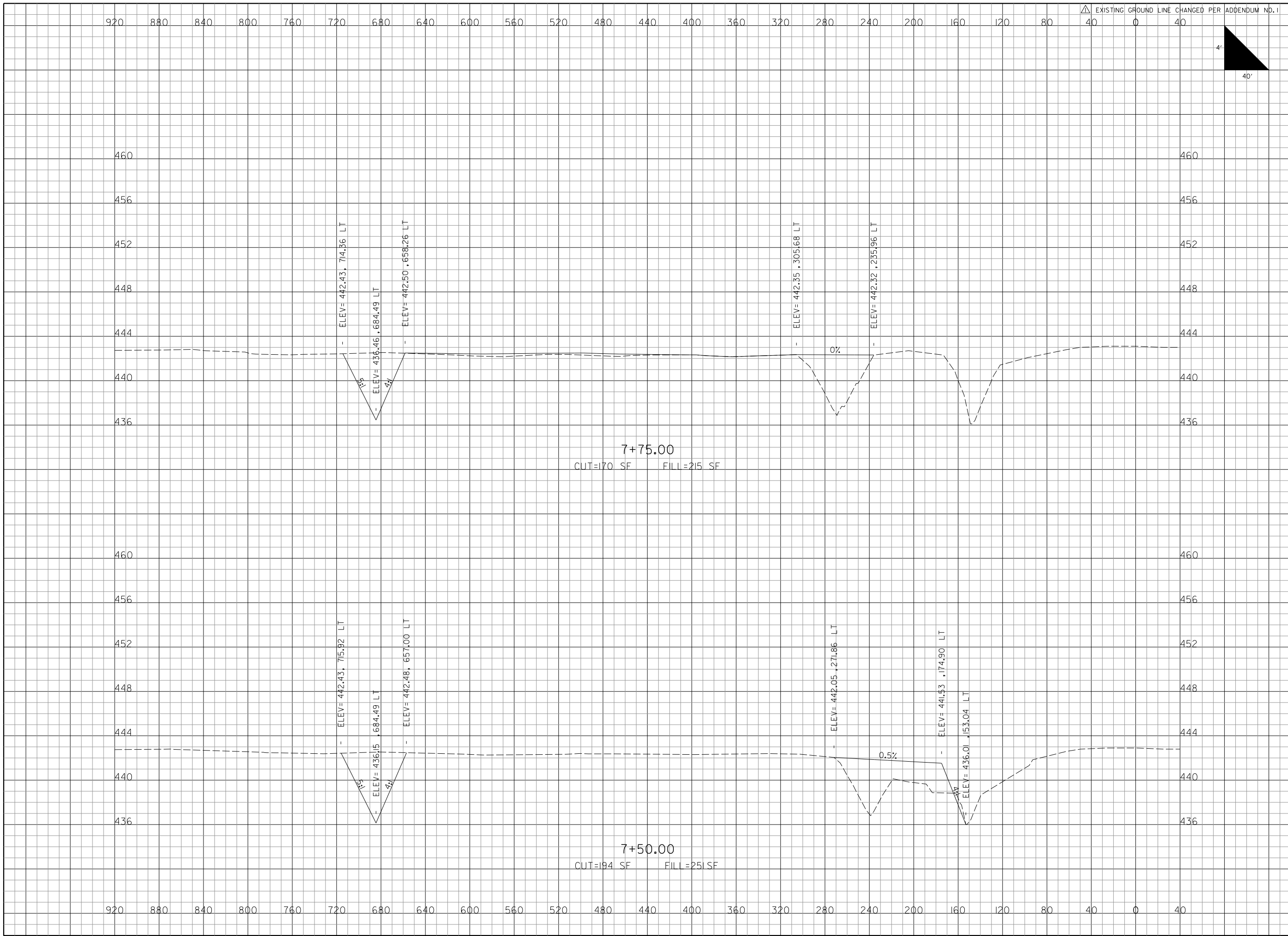


I:\3\2012
 k:\MidAmericaAp\100980L Mike_Apron\Draw\Sheets\Contractor\40-57_XS_Mike.dgn



REVISIONS		
NUMBER	BY	DATE
△	BWG	1/3/12

0 1 2
 THIS BAR IS EQUAL TO 2"
 AT FULL SCALE (34X22).
 PLOT 1

**MIDAMERICA ST. LOUIS AIRPORT
 ST. CLAIR COUNTY, ILLINOIS**

**MIKE APRON EXPANSION
 BASE BID**

ONE MEMORIAL DRIVE, SUITE 500
 ST. LOUIS, MO 6302
 (314) 436-9500

CMT
 CRAWFORD, MURPHY & TILLY, INC.
 CONSULTING ENGINEERS

© Copyright CMT, Inc.
 PROFESSIONAL ENGINEERING - 000613

**IL PROJECT: BLV-4061
 AIP PROJ: 3-17-0146-029-2011**

FILE: 40-57_XS_Mike.dgn
DESIGN BY: LEW
DRAWN BY: LEW
CHECKED BY: CET
APPROVED BY: BWG
DATE: NOVEMBER 28, 2011
JOB No: 10098-01
MIKE APRON EXPANSION CROSS SECTIONS SHEET 5 OF 18
SHEET 44 OF 89 SHEETS