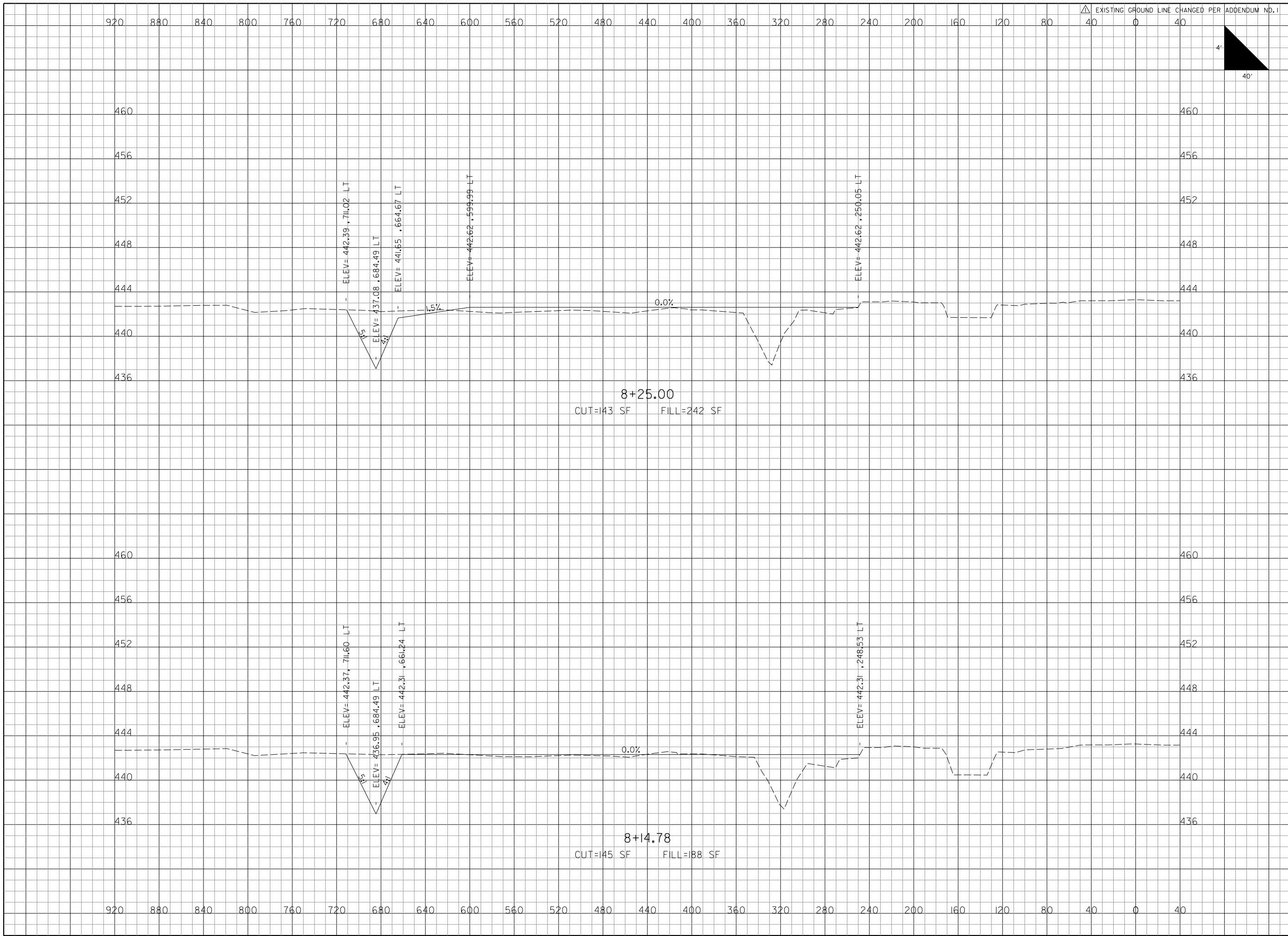


I:\3\2012  
 K:\MidAmericaAp\100980L Mike\_Apron\Draw\Sheets\Contract\140-57\_XS\_Mike.dgn



REVISIONS		
NUMBER	BY	DATE
△	BWG	1/3/12

0 1 2  
 THIS BAR IS EQUAL TO 2"  
 AT FULL SCALE (34X22).  
 PLOT 1

**MIDAMERICA ST. LOUIS AIRPORT  
 ST. CLAIR COUNTY, ILLINOIS**

**MIKE APRON EXPANSION  
 BASE BID**

ONE MEMORIAL DRIVE, SUITE 500  
 ST. LOUIS, MO 6302  
 (314) 436-9500

**CMT**  
 CRAWFORD, MURPHY & TILLY, INC.  
 CONSULTING ENGINEERS  
 © Copyright CMT, Inc.  
 PROFESSIONAL ENGINEERING - 000613

**IL PROJECT: BLV-4061  
 AIP PROJ: 3-17-0146-029-2011**

FILE: 40-57_XS_Mike.dgn
DESIGN BY: LEW
DRAWN BY: LEW
CHECKED BY: CET
APPROVED BY: BWG
DATE: NOVEMBER 28, 2011
JOB No: 10098-01
<b>MIKE APRON EXPANSION    CROSS SECTIONS    SHEET 7 OF 18</b>
SHEET 46 OF 89 SHEETS